

SOUTH AUSTRALIA

TWENTY NINTH ANNUAL REPORT

OF THE

HISTORY TRUST of SOUTH AUSTRALIA

FOR THE

YEAR ENDED 30 JUNE 2009



History Trust of South Australia

Directorate
Torrens Parade Ground
Victoria Drive
Adelaide SA 5000

GPO Box 1836
Adelaide SA 5001

DX 464 Adelaide

Telephone: +61 8 8203 9888
Facsimile: +61 8 8203 9883 (General)
 +61 8 8203 9889 (Executive)
Website: www.history.sa.gov.au
Email: staff@history.sa.gov.au

This report is prepared by the Directorate of the History Trust of South Australia

ISSN 1832-8482

Contents

BACKGROUND.....	1
WHO WE ARE	1
WHAT WE DO	2
CORE VALUES.....	2
OBJECTIVES.....	3
ORGANISATIONAL CHART.....	4
CHAIRPERSON'S REPORT	5
CHIEF EXECUTIVE'S REPORT	6
HIGHLIGHTS 2008-09	13
ACHIEVEMENTS ADDRESSING THE STATE STRATEGIC PLAN	14
PRINCIPAL OBJECTIVES 2009-10	15
MAJOR STRATEGIC ISSUES 2009-10	16
DIVISIONAL REPORTS	17
COMMUNITY HISTORY PROGRAMS	17
MIGRATION MUSEUM.....	23
NATIONAL MOTOR MUSEUM	28
SOUTH AUSTRALIAN MARITIME MUSEUM.....	33
MARKETING AND SPONSORSHIP.....	38
BUSINESS SERVICES.....	45
APPENDICES	56
1. BOARD OF TRUSTEES.....	57
2. MANAGEMENT PERSONNEL	57
3. STAFF AS AT 30 JUNE 2009	58
4. HONORARY CONSULTANTS/VALUERS.....	59
5. MIGRATION MUSEUM FOUNDATION COMMITTEE MEMBERS.....	59
6. VOLUNTEER SERVICES.....	60
7. KEY PERFORMANCE INDICATORS 2008-2009	61
8. GRANTS/SPONSORSHIP OBTAINED.....	62
9. PUBLICATIONS.....	63
10. UNPUBLISHED CONFERENCE PAPERS.....	63
11. MUSEUMS ACCREDITATION AND GRANTS PROGRAM	64
12. SOUTH AUSTRALIAN HISTORY FUND.....	66
13. EXHIBITION PROGRAM	67
13. EXHIBITION PROGRAM	68
14. FINANCIAL STATEMENT FOR THE YEAR ENDED 30 JUNE 2009.....	74

Background

Our Vision

To inspire South Australians to reflect on the present and imagine the future, through an active engagement with their past.

Our Mission

To bring South Australian history to life and preserve it for future generations. This will strengthen community identity and foster a strong sense of place.

To achieve this we will:

- > Present imaginative, innovative and inclusive public programs that enlighten, promote reflection, challenge and entertain.
- > Maintain and develop the State History Collection to best practice standards to **preserve South Australia's material** history.
- > Foster quality research in South Australian history that is challenging, independent and inclusive.
- > Form partnerships with regional and other community organisations to better present and preserve local histories and collections.
- > Collaborate with regional, national and international partners to make South **Australia's distinctive stories** better known.
- > Manage resources in an equitable and sustainable manner.

Who We Are

The History Trust of South Australia is a statutory authority reporting to Parliament through the Minister for the Arts. It was established in 1981 under the *History Trust of South Australia Act (1981, 1995, 2005)* to encourage the research and public presentation of South Australian history and to **safeguard South Australia's material heritage**. The Trust's central administration is located at the Torrens Parade Ground in central Adelaide, but its main public face is

presented by three history museums — the Migration Museum, National Motor Museum and South Australian Maritime Museum. Changing exhibitions are also presented in the History Trust Exhibition Gallery at the Parade Ground. The Trust also manages an important community history program to assist community museums and historical **researchers**. The History Trust's Board of eight trustees reports to the Minister for the Arts.

What We Do

Under the *History Trust of South Australia Act (1981, 1995, 2005)* the Trust is responsible for the following:

- researching and interpreting South **Australia's history**;
- preserving and exhibiting South **Australia's material history**;
- managing museums of its own and **assisting the State's** community museums;
- encouraging and assisting the work of **South Australia's historical societies**;
- providing policy advice to the Minister for the Arts on issues of relevance to South **Australia's history and material culture**.

These responsibilities are realised through the following programs:

- managing three museums and a changing exhibitions gallery which interpret aspects of **South Australia's history**:
 - > the Migration Museum – which preserves and interprets the history of migration to and settlement in South Australia;
 - > the National Motor Museum – which manages and interprets a collection **representing Australia's motoring history**;

- > the South Australian Maritime Museum – which preserves a collection of maritime heritage objects and interprets the maritime history of South Australia;
- > the History Trust Exhibition Gallery – which presents exhibitions reflecting aspects of the history of South Australia and the city of Adelaide;
- providing advice and assistance to South **Australia's 200 community history** museums and 150 historical societies, as well as the many individuals who research South Australian history, through Community History Programs. This section also administers two grant programs – the Community Museums Program and the South Australian History Fund (for South Australian history publications and programs);
- managing the State Historical Collection;
- promoting South Australian history and **the activities of the History Trust's** divisions; and
- presenting and promoting events including **SA History Week**, State History Conference and other major events.

Core Values

The History Trust is committed to:

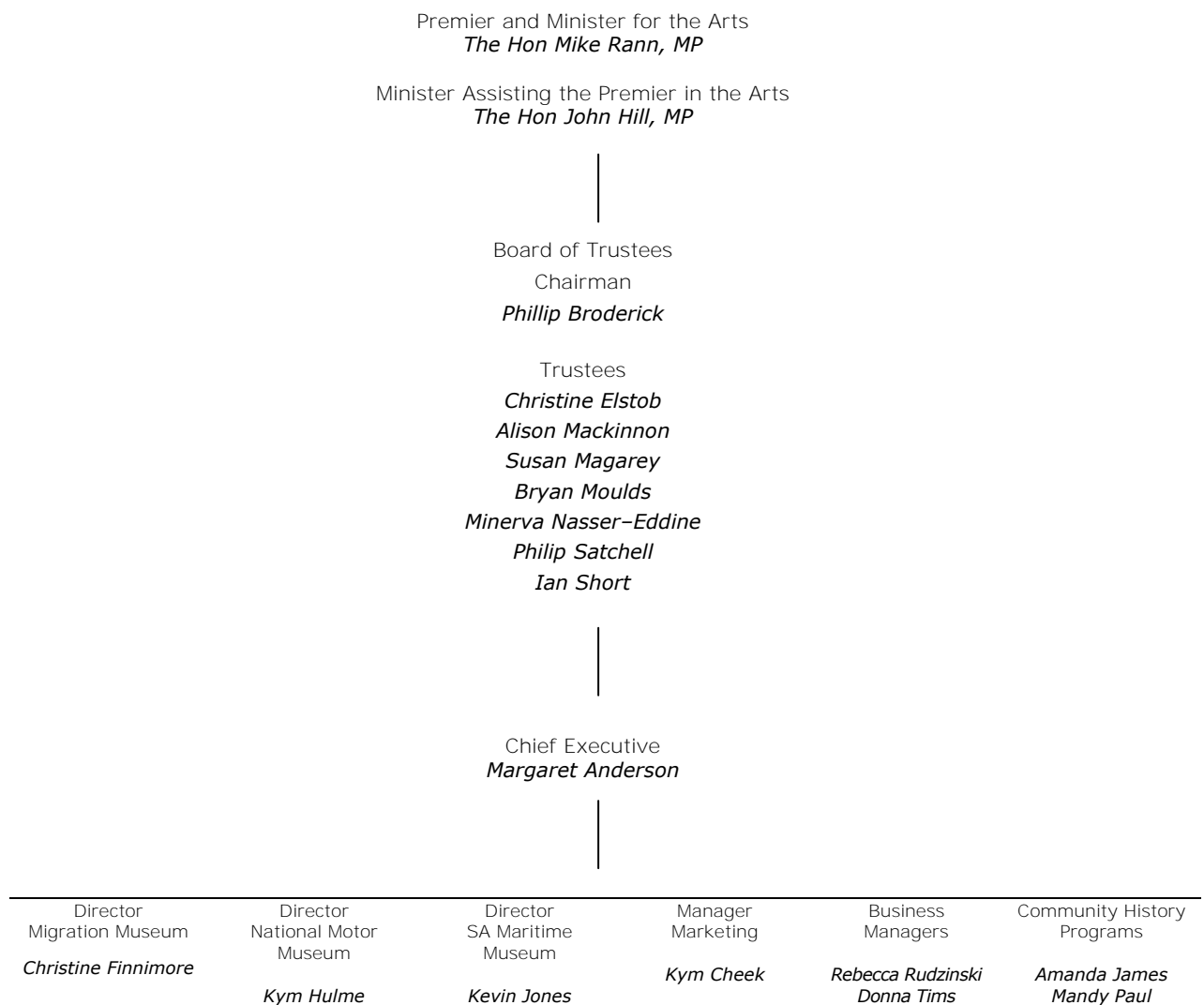
- > Excellence in historical research and interpretation
- > Preserving and interpreting South **Australia's material culture**
- > Nurturing community historical endeavour
- > Inclusiveness in program development
- > Fostering ideas and encouraging diverse perceptions
- > Valuing Reconciliation and cultural diversity
- > Equity, probity and efficiency in management
- > Best practice collections management
- > Providing a safe and enriching environment for staff and visitors
- > Excellence in customer service
- > Respecting the contribution of volunteers

Objectives

- > Enhancing understanding of South Australian history through public programs, the media and research
- > Encouraging the practice of South Australian history throughout the community
- > Promoting the significance of South Australian history to Government and the community
- > Encouraging engagement with and enjoyment of South Australian history
- > Presenting a diversity of perspectives on the past through public programs and publications
- > Ensuring that public programs reflect the diversity of community histories over time
- > Fostering research in South Australian history through our own programs and by assisting others
- > Managing and promoting our three museums and the History Trust Exhibition Gallery and working towards others as appropriate
- > Managing the State History Collection
- > Presenting inclusive programs
- > Ensuring the preservation of a **representative sample of the State's** material heritage
- > Managing a community history program for community practitioners
- > Managing the Community Museums Program and South Australian History Fund
- > Encouraging sustainable community history programs through networks of regional historical groups, the South Australian Tourism Commission and Local Government
- > **Managing the Trust's resources** effectively and efficiently
- > Promoting collaborative partnerships within the History Trust and with other organisations, both State and National
- > Maximising financial resources through the vigorous pursuit of both internal and external funding opportunities
- > Ensuring a safe and enriching work environment for History Trust staff
- > Ensuring a strong culture of customer service throughout the organisation.

Organisational Chart

History Trust of South Australia as at 30 June 2009



Chairperson's Report



The Hon John Hill, MP
Minister Assisting the Premier in the Arts

Dear Minister

I am pleased to present the 29th Annual Report of the History Trust of South Australia for the year ended 30 June 2009, pursuant to section 20 of the *History Trust of South Australia Act (1981, 1995, 2005)*.

The Board is pleased to record that the Trust met all of its major strategic goals for the year. It completed an especially busy exhibition and events program and achieved notable improvements in the efficiency of the Trust-wide collection management system.

Community engagement with the Trust's programs continues to grow, with another record *SA History Week* in May and equally high attendances at other Trust events. Some 60 000 people participated in History Week this year and the Trust faces pressure to increase the period of the event to allow for greater participation in 2010.

Improving the Trust's on-line facility was a priority this year and I am pleased to report significant progress. The Trust is aware of State and national initiatives in this area and sees potential for the provision of historical material on-line, especially in the context of the new **national history curriculum and the approach of the State's 175th anniversary year in 2011**.

I express thanks to my fellow Board members and to the Chief Executive, staff and volunteers of the History Trust. This is a small organisation that consistently performs well, given its resources.

The Board also wishes to thank you for your support and interest.

PHILLIP BRODERICK
Chair

Chief Executive's Report



A very active program of public exhibitions, education programs and events was the main feature of the History Trust work program once again this year, more than fulfilling the goals set in the first objective in our strategic plan – **'engage South Australians and visitors with our history'**. **Two major touring exhibitions**, produced with the very welcome assistance of the Visions of Australia program, were particular highlights, supported by a busy program of additional temporary exhibitions at all sites.

The History Trust events program was especially successful this year, with strong crowds at both the *Bay to Birdwood* and the *Rock & Roll Rendezvous* at the National Motor Museum, while *SA History Week* continues to pass all expectations.

Education programs were a particular strength once more. The South Australian Maritime Museum reached a record number of 21 598 students, assisting that museum to exceed its visitor target for the third successive year. The education program at the Migration Museum was also a highlight, with a wonderful comedy festival a highlight of the year.

In general the Trust weathered the global economic downturn fairly well, although visitor numbers fell at the Migration Museum, reflecting the high proportion of international tourists in its visitor profile. Many cultural institutions now engage with more virtual than real visitors. While this is not yet the case for the History Trust, considerable progress was made this year in planning for the future on-line presence of the organisation.

Strategy 1: Engage South Australians and visitors with our history

Touring exhibitions

The small curatorial staff of the History Trust excelled themselves this year, producing a varied program of touring, temporary and longer-term exhibitions that compares favourably with the output of museums far better resourced than ours. First cab off the rank, and unquestionably one of the highlights of the year, was the imaginative touring exhibition curated by the National Motor Museum, commemorating the centenary of the first motor crossing of the continent in 1908. **The vehicle at the centre of the story, a 1908 Talbot, is one of the treasures of the Museum's collection** and the saga of the journey is one of the great tales of Australian motoring history. Although the Talbot is now too fragile to drive very far, to the great delight of spectators it was able to drive short segments of the route, which followed, as closely as feasible, the original route through the centre of the continent taken by Harry Dutton and Murray Auger in 1908. This time Angelina, as the Talbot was named by its original owners, travelled in relative ease, ferried in a purpose-built trailer that opened out to become a mobile exhibition gallery en route.

The exhibition visited 23 towns and 21 outback schools on the journey from Adelaide to Darwin – the first Visions-funded exhibition to reach these isolated communities. In all, it was viewed by over 23 000 visitors. Curator Allison Russell and Motor Museum Director Kym Hulme travelled the entire route themselves, presenting lectures and education programs as they went. They were assisted by two remarkable volunteers, Liz and Russ Driver of Outback Vehicle Recovery, who left

their business for three months to drive the truck pulling the Talbot for the entire route – and back again! It was an extraordinarily generous gesture. The tour ended triumphantly in Darwin, where the exhibition was presented in the Northern Territory Library. An on-line blog enabled interested viewers to track the progress of the journey and to add comments of their own. The exhibition was produced with the assistance of the Visions of Australia program, which also funded the tour. The History Trust certainly could not have contemplated such a project without the assistance of Visions.

Meanwhile a second Visions-funded exhibition was in preparation at the South Australian Maritime Museum. Produced in partnership with the South Australian Museum, ***Quest for the South Magnetic Pole*** explored the final segment of one of the longest quests in the history of exploration. It was curated by Mark Pharaoh of the SA Museum and Lindl Lawton of the SA Maritime Museum. The South Magnetic Pole eluded searchers from the time of the voyages of James Cook, largely because its geographic position is not fixed, but it was eventually located in 2000, when Australian scientist Dr Charlie Barton succeeded in reaching the spot. The exhibition opened at the Maritime Museum in May and will tour nationally. This was a highly successful collaborative project, combining the insights of historians and scientists to produce an important and popular exhibition. I would like to thank both the South Australian Museum and the Visions of Australia program for making the project possible. ***The River – Life on the Murray Darling***, another collaborative exhibition, produced in association with the Australian National Maritime Museum, and also funded with the assistance of Visions, completed its national tour during the year.

Temporary exhibitions

Providing variety in exhibition programs is one of the essential elements, but also one of the greatest challenges, for modern museums. In the absence of recurrent funding for exhibitions, all of the displays shown in History Trust museums are funded from external sources, mostly from grants or corporate supporters and securing these funds is a constant exercise in ingenuity. The **Maritime Museum's other major temporary show this year was presented with the generous assistance of AGL Torrens Island Power Station and it reflected, most appropriately, the history of the Port itself. *Captured on Canvas: John Giles' Port Adelaide 1930 to 1960***, exhibited for the first time a remarkable collection of pictures by local artist John Giles, who lived and worked in the Port throughout his life. These works were a delight, reflecting a somewhat romantic view of the working port, now long gone and they proved to be very popular with local audiences.

The Migration Museum drew on its own extensive document collection to present its major temporary exhibition this year. ***Evidence of Survival: The Impact of World War Two in Documents*** told the stories of South Australian immigrants from a range of communities, whose documents, both official and unofficial, evidenced their war time histories. The exhibition was curated by Catherine Manning and proved to be very popular with visitors. It was supported by an education program devised by Education Officer Rosa Garcia. The Migration Museum also continued its well established series of community access exhibitions in the designated gallery space the ***Forum***. The History Trust pioneered the concept of community access exhibitions in Australia and the **Migration Museum's example has been followed in many museums elsewhere**. This access space provides an important opportunity for community groups to present their own more detailed histories in their own way. Over the years it has allowed the Museum to present some of the community-specific stories that cannot be accommodated in the more general interpretive narratives of the main display galleries.

The National Motor Museum chose to address the issue of sustainability in motoring as the theme of its second major temporary display for the year. ***Shades of Green*** explored the differing 'green' options explored by vehicle designers in the past few decades and considered the advantages and disadvantages of the various fuel options available to the modern motorist. This is a complex topic, potentially bewildering to ordinary motorists, and the exhibition provided a most useful reference point for consumers seeking clear information about the many options available. ***Shades of Green*** was curated by Allison Russell and supported by State Government Insurance Commission (SGIC).

The History Trust was also asked to manage a regional tour of two very significant historic items – the Victoria Cross awarded posthumously to Private Peter Badcoe for valour in action in Vietnam, and the Yandruwandha breastplate associated with the ill-fated Burke and Wills expedition in 1862. The tour was managed **for the Minister of Veterans' Affairs. Experienced curator Kate Walsh** kindly returned to the History Trust to manage the tour, which visited 17 towns throughout regional South Australia between March and June. Some 8616 people took the opportunity to view the items. The Trust was ably assisted by the Police Security Services Branch of South Australia Police.

Events

The History Trust's annual events calendar is marked by four major events and a multiplicity of smaller ones. **SA History Week** was first presented as an experiment in 2004. To our delight it has grown in popularity every year, until it has become one of **South Australia's largest community events. This year's program included 337 activities, presented by 246 different community organisations, in a program booklet that ran to 75 pages.** The Trust presented the program with the assistance of a number of partners, notably the Department of Environment and Heritage, the Adelaide City Council, The University of Adelaide, ABC Radio Adelaide and Messenger Newspapers. Their support is essential to the success of the program and I thank them most sincerely. This year we estimate that over 60 000 people participated in at least one activity during the week and there is clear potential for growth. We face increasing pressure from consumers and from participating community organisations to increase **the time span of History 'Week', in particular to allow contributors to become consumers.** We will certainly investigate the feasibility of programming the event over a fortnight or a month in future years, but may face significant resourcing issues in the attempt. History Week was a new initiative, supported from within the existing resources of the Trust. It is a very complex and labour-intensive event to coordinate. Ironically, we may become the victims of our own success!



SA History Week 2009 flyer
22–31 May 2009

The annual State History Conference provides a unique opportunity for those interested in South Australian history to come together to learn, discuss and debate. It is an unusual event, uniting academic, professional and community historians in the common pursuit of the past, and over the **years has become a treasured event in the historical calendar. This year's conference, the seventeenth, was held at Sunnybrae Function Centre in Enfield. Some 171 delegates heard 26 papers on a range of topics around the theme *Changing Places: Changing Lives.* Many of the papers have been made available by authors to a wider audience through the History Trust's web site.**

The National Motor Museum manages the other major annual events – the **Bay to Birdwood Run** (alternating biannually with the **Bay to Birdwood Classic**) and the **Rock & Roll Rendezvous**. Both events are somewhat weather dependent, as the exhibitors of veteran and vintage cars are often **loathe to drive them in the rain, but this year's events** were both fortunately timed. The **Bay to Birdwood Run**, held on 28 September, attracted a very pleasing number of casual visitors, in addition to excellent vehicle entrant numbers, while the **Rock & Roll Rendezvous** seems to have recovered from something of a decline in recent years. These major events were supported at the Motor Museum by a steady program of specialist car club days and special displays, which provided the **Museum's core visitors with both variety and an opportunity for direct involvement in exhibiting.**

Education programs

The History Trust has a series of goals that reflect our commitment to providing quality education services to South Australian schools. They are matched by a commitment to programs encouraging life-long learning. In the provision of programs for schools, the Trust works in partnership with the Education Department's **Open Access College**. We especially value our close working relationship with the Open Access College, which provides the education officers for this vital program.

From her base at the Migration Museum, Rosa Garcia further developed the innovative range of programs that have become her hallmark, developing a new program to accompany the ***Survivors* exhibition and a very popular comedy festival as part of the annual children's festival *Come Out***. The comedy program used humour as a hilarious entree to the difficult and complex world of racial and ethnic prejudice. The program may well become a standard addition to the annual repertoire. At the South Australian Maritime Museum Mandi Dimitriadis explored the potential of new technologies, through a new program using MP3 players to provide audio tours of the Port. She also continued her very popular introduction to the modern working port, in partnership with Flinders Ports and DP World Terminals. The popularity of these programs continues to grow, and this year attracted 21 598 booked students – a record for the Museum.

History Trust on-line

The expansion of the on-line environment in the past few years has transformed the ways in which we view the provision of information and other business services, enabling museums, and organisations like the History Trust that produce knowledge, to expand their client reach well beyond those who visit physically. There is enormous potential for the information we can provide, especially with the approaching introduction of the new national history curriculum in **2011 and the Federal Government's planned National Broadband Network**. Developments in the interactive web (web 2.0 and its successors) and the possibilities offered by the semantic web, have immense potential for the provision of historical information and for interaction with a community of on-line history enthusiasts. This is especially true as we approach the 175th anniversary of European settlement in South Australia – also in 2011. However it is fair to say that they present challenges too – challenges that we are not well positioned at present to meet. In the next two years we would like to take advantage of the new opportunities in on-line research and knowledge creation developing nationally, but will need some additional assistance to do so effectively.

Within the limits of its modest existing resource base the History Trust has managed to expand its provision of on-line content in this past year. More importantly we have completed a strategic **planning process for the Trust's future web presence, involving as many staff as possible**, since a dedicated staff effort will be required to implement our goals in this area. A detailed review of the **Trust's overall IT services is also in train**. Although it is always difficult to argue for more resources at times of budgetary contraction, this is a significant area of new business that is **crucial to South Australia's visibility in the expanding on-line environment**.

Strategy 2: Preserve South Australia's material history

An important responsibility of the History Trust is the interpretation and care of the State Historical Collection. At the end of June 2009 there was a total of 31 013 objects in the collection, with their management divided between the three museums and the History Trust Directorate. This represents a growth rate of about ten per cent in the past twelve months. A number of highly significant items were accepted into the collection during the year, notably items associated with the Sym Choon family at the Migration Museum, a collection of early nineteenth century prints documenting **Matthew Flinders' 1802–03 voyage around Australia** at the South Australian Maritime Museum and a number of vehicles, including a 1999 AEV/Wilmot petrol/electric hybrid truck, at the National Motor Museum. In addition the Trust has agreed to accept a large collection

of medical history artefacts previously stored at the Glenside Hospital. For the moment these items remain at Glenside, but it is intended to house the collection in the former Public Libraries' facility at Hindmarsh, on an interim basis. Museum standard storage space remains a critical issue for the Trust, with collections on all sites stored in conditions which do not meet national standards for museum storage areas.

In addition to the general collection of historical items, the Trust maintains a number of items in working order – notably the two vessels *Archie Badenoch* and *Yelta* at the Maritime Museum and a collection of motor vehicles, including the venerable old Talbot. *Yelta* required major repairs this year to remain in survey and this work was completed over Christmas 2008 with a grant from Arts SA. *Yelta's* band of dedicated volunteer crew members assisted in this work and their contribution is much appreciated. Both *Archie Badenoch*, which is used extensively in education tours of the Port River, and *Yelta* are crewed by volunteers, whose contribution is an essential component of the Maritime Museum's success.

Two years ago the Trust made the decision to invest in a new collections management system, KE-EMu, which replaced the series of separate data-bases in use at the individual museums. The process proved to be far more complex than anticipated, but curators feel they have almost completed the process of standardising the data transferred. An upgrade to the host server has also increased our capacity to expand the data-base and store more digitised materials.

Strategy 3: Extend partnerships

Strengthening regional and volunteer communities

The Trust's work with regional and volunteer communities – museums, historical societies and local history centres – is an important part of our work program. It is actively pursued through Community History Programs, located in the Directorate office in Adelaide. This unit administers two grant programs – the Community Museums Program and the South Australian History Fund – and supports both with an active series of regional training workshops offered throughout the State. Both grants programs are immensely important sources of assistance to the largely volunteer organisations that administer most of the state's local museums and history programs and are always heavily over-subscribed. The varied projects they help to fund are important contributors to regional tourism initiatives, but are also important components in the complex cultural mix that helps to sustain rural and regional communities in the longer term. The details of this year's grants are available in the more detailed report of Community History Programs and in the appendices.

An important component of this year's work program was the revision of the widely-used *Community Museums Program Handbook*, to align the program with the new National Standards for Museums and Galleries, adopted during the year. The Handbook has been a model for similar projects elsewhere and is supported by an extensive series of more detailed 'Help Sheets'. Both are distributed free to all museums in the Community Museum Program and are also available on-line.

Working with diverse communities – whose history?

Each year the History Trust works with a diverse range of community groups which share an interest in preserving South Australian history. They include rural and regional museums and historical societies, Indigenous groups and South Australia's diverse immigrant communities. As an organisation we have a strong commitment to presenting a diversity of histories and to representing a plurality of perspectives on the past. This aspect of our work is a unique strength of the organisation, reflected in the strong community support for programs at the Migration Museum, and *SA History Week*, to choose two examples. But occasionally they spark controversy, reminding us that understandings of the past can be hotly contested, but also that the past

continues to be important in the present. One such issue arose at the Migration Museum during the year, when the Museum agreed to add a memorial to Pontian Greeks displaced by the Turkish Empire in the aftermath of the First World War to its Memorial Wall. At issue was the reference to **the Pontian Greeks as 'genocidal victims' which generated significant opposition from the Turkish community**, but also from elements in the press. After some months of controversy, the South Australian Parliament passed a unanimous motion acknowledging the genocide – the only legislature to do so outside Greece. Parliament also affirmed the importance of the honest presentation of the past. The Museum is currently assessing a proposal from the Uighur community, refugees from western China – a community much in the news at present.

Strategy 4: Foster research

The History Trust is committed to encouraging and supporting research in South Australian history and material culture, both internally through our curatorial and research staff, and externally through the grants program and through research partnerships with the university sector. Much of our internal research to date has been aligned with the busy exhibition program managed at all sites. However we hope to extend our general research output in the next few years.

Of particular interest this year were several new research initiatives with colleagues at Flinders University and the University of South Australia. The Maritime Museum is a partner in an Australian Research Council Linkage grant with Flinders University, investigating the management of cultural heritage in Port Adelaide. Initial discussions were also held with Flinders University to investigate the potential of a major research project, hopefully with an e-research component, investigating expressions of identity through material culture. History Trust staff from the Migration Museum and Directorate were involved in these early discussions.

Mandy Paul and I have also been working closely with the University of South Australia on two projects – research about post war housing and urban development, (which will also be an exhibition) and a larger multi-disciplinary study of the growth of Adelaide. We hope that the Adelaide project will result not only in significant scholarly outcomes, but a major on-line public resource as well.

Strategy 5: Manage resources

Staff changes

This was a year of significant change in the organisation, with the retirement of two long-serving and well loved staff members, who between them had contributed nearly 50 years of creativity to the Trust. In November 2008 Director of the Migration Museum Viv Szekeres retired. Viv first joined the Migration Museum staff in 1985, succeeding me as Director in 1987. Kate Walsh, who retired in December, was the Senior Curator at the Migration Museum for nearly 20 years, before moving to the Directorate to manage the Community History Unit, as it then was. Both were widely respected for their significant contributions to the preservation and interpretation of South Australian history and they left an enormous gulf in their wake. **The new Director of the Migration Museum is former Senior Curator Christine Finnimore, who has stepped ably into Viv's shoes.** Community History Programs is now jointly administered by Senior Curator Mandy Paul and Senior Community History Officer Amanda James.

Facilities management

Maintaining the Trust's suite of heritage sites is one of the continuing challenges faced by the organisation. This year saw a very welcome injection of conservation and maintenance funding for the Birdwood Mill, the landmark heritage building on the site of the National Motor Museum. This work, jointly funded by Arts SA and the Heritage Unit of the Department of Transport, Energy and Infrastructure, will allow the Museum to re-open the Mill to the public after its closure for the past three years. A revised scope of works for conservation of the basement of the Bond Store, site of the Maritime Museum, was also completed. We hope that this might begin the process of refreshing the elderly exhibition stock at the Maritime Museum, which has not seen significant investment since 1986.

Conclusion

In conclusion I would like to pay tribute to the extraordinary commitment and creativity of the History Trust, board, staff and volunteers, whose energy and enthusiasm drives such an extraordinary work program year after year. I thank all of them sincerely for their support, for their optimism and for their continual willingness to embrace new ideas. I also thank our many partners, in government, in business and in the community, for their continuing engagement in our history making.

MARGARET ANDERSON
Chief Executive

History Trust of South Australia

Torrens Parade Ground, Victoria Drive, Adelaide 5000
Telephone: +61 8 8203 9888 Fax: +61 8 8203 9883
Website: www.history.sa.gov.au
Email: staff@history.sa.gov.au

Highlights 2008–09

- Visitor numbers:
 - > total site attendances 323,793
 - > Attendance at touring exhibitions 41 758
 - > Attendance at *SA History Week* events 60 000
- Two new touring exhibitions and eight temporary exhibitions were curated in-house (Badcoe & diamond lion)
- 21 community–partnership exhibitions were produced in-house
- Nine temporary exhibitions addressing aspects of cultural diversity were presented
- Visions of Australia touring grants assisted with the tours of *The River: Life on the Murray–Darling* to regional South Australia and interstate, and *Off the beaten track; a journey across the nation*, an exhibition retracing the route of the Talbot from south to north in 1908
- Visions of Australia development grant assisted with *Quest for the South Magnetic Pole*
- 22 programs were presented in association with culturally diverse communities
- 249 programs were presented increasing understanding of Indigenous history
- A review of the HT’s on–line presence was completed and an online Strategic Plan was prepared
- An extensive catalogue of the Migration Museum was published
- There were 41 832 booked student visits, including 11 750 visits and activities from category 1–4 disadvantaged schools
- The South Australian Maritime Museum achieved its highest total of education visits on record with 21 598 visits
- 136 volunteers contributed 24 640 hours to assist in History Trust programs
- An additional 2050 volunteers contributed 12 497 hours to *SA History Week* 2009 activities (MP/JM)
- 3985 new items were added to the State History Collection
- Community History Programs staff collaborated in the development of draft national standards for Australian museums
- The Community History Program Handbook was revised in line with the national standards for Australian museums and published on the History Trust website
- The History Trust presented a program of seminars and lectures on all sites, in collaboration with academic and other partners
- The History Trust Strategic Plan was reviewed and revised

Achievements addressing the State Strategic Plan

In 2008–09 the History Trust contributed to a number of objectives in the State Strategic Plan as follows:

Objective 1: Growing Prosperity

The History Trust contributed to this goal in 2007–08 by:

- > Managing permanent tourist attractions in four locations, and providing continuity of product
- > Attracting 323 793 visitors to sites in Adelaide, Port Adelaide and Birdwood
- > Attracting 209,938 interstate and international tourists to museum exhibitions and events
- > Presenting programs in Indigenous history and cultural diversity to corporate and public sector clients to increase understanding
- > Supporting cultural tourism in regional areas.

Objective 2: Improving Wellbeing

The History Trust contributed to this goal in 2008–09 by:

- > Providing opportunities for life-long learning through exhibitions, programs and access to research
- > Supporting community organisations providing active engagement for older South Australians
- > Promoting healthy choices in programs
- > Creating a sense of belonging and connectedness through exhibitions and programs
- > Contributing to awareness of road safety amongst young people through National Motor Museum programs

Objective 3: Attaining Sustainability

The History Trust contributed to this goal in 2008–09 by:

- > Using smart lighting in the Migration Museum's exhibition galleries
- > Highlighting water issues in the major touring exhibition, *The River: Life on the Murray–Darling*
- > Emphasising water issues in education programs at the South Australian Maritime Museum
- > Presenting education programs in environmental history to 11 132 students.

Objective 4: Fostering Creativity

The History Trust contributed to this goal in 2008–09 by:

- > Progress towards Target 4.3 – 10 per cent increase in attendance since 2003–04
- > Developing and presenting 34 new exhibitions
- > Developing and presenting four new education programs
- > Presenting challenging histories that provoked thought and inspired debate
- > Holding one conference and a lecture series presenting new historical research
- > Researching two publications on aspects of history and the collection
- > Publish a new guide to the Migration Museum
- > Presenting regional workshops in collection care and interpretation
- > Providing opportunities for creative volunteering



Migration Museum's, Museum Officer Lata Mayer delivers *Impact of Settlement* to a group from the Attorney General's Department

Objective 5: Building Communities

The History Trust contributed to this goal in 2008–09 by:

- > Developing and presenting exhibitions and events encouraging collective memory, a sense of belonging and a sense of place
- > Providing safe places to explore challenging ideas
- > Presenting education programs in the history of cultural diversity to 16 207 students
- > Presenting education programs in Indigenous history to 6972 students
- > Presenting programs encouraging tolerance and understanding of difference
- > Presenting programs to non-English speaking students
- > Presenting free programs to students from disadvantaged schools
- > Fostering regional history
- > Supporting regional initiatives in Indigenous and diverse histories
- > Touring exhibitions and other programs to regional South Australia (total attendances: 41 758)
- > Supporting volunteers in community organisations

Objective 6: Expanding Opportunity

The History Trust contributed to this goal in 2008–09 by:

- > Presenting exhibitions and education programs in Indigenous history
- > Presenting skill-building workshops to volunteer groups in metropolitan and regional South Australia
- > Presenting free programs to students from disadvantaged schools

Principal Objectives 2009–10

Relevant documents: History Trust of South Australia Strategic Plan 2009–12 and History Trust of South Australia Business Plans 2009–12.

Subject to funding in 2009–10 the History Trust intends to:

- **Progress plans to mark South Australia's 175th anniversary in 2011 with:**
 - (1) A major historical exhibition
 - (2) A significant on-line resource on **South Australia's history**
 - (3) **SA History Week**
- Manage a government consultative committee to plan for 2011.
- Co-ordinate and promote **SA History Week** in May 2010
- Present a program of changing exhibitions at each History Trust site
- Continue the program of touring exhibitions in regional South Australia and interstate
- Continue to grow the education programs at all museum sites
- Manage and grow the large events program at the National Motor Museum
- Present the 18th State History Conference in August 2009, plan for the 19th conference in 2010 and collaborate with partners on other conferences
- Progress new publications on South Australian history
- Seek funding for one major research project and investigate other projects, in line with the History Trust of South Australia Research Strategy
- Progress collaborative e-research initiatives, including national initiatives
- Manage the community grants programs
- Continue collaborative skill-building workshops in regional South Australia (with Artlab Australia)
- Market History Trust programs effectively in a range of media, including on-line
- Progress urgent building maintenance projects at the Migration Museum, National Motor Museum and South Australian Maritime Museum
- Advocate for improved funding for facilities management, including for the History **Trust's heritage assets, collection storage** and exhibition funding
- Continue to implement the OHS&W strategic plan
- Grow the extent of ex-budget revenue
- Work with Arts SA to achieve a more satisfactory outcome for storage of the State History Collection
- Improve disability access to the History **Trust's heritage buildings**
- Progress the **History Trust's Sustainability** and Greenhouse Gas Reduction Plan
- Continue to provide meaningful development opportunities for History Trust staff
- Complete major conservation and structural work on Birdwood Mill
- Progress plan for relocation of National Motor Museum Library
- Plan for re-opening of Birdwood Mill to the public.

Major Strategic Issues 2009–10

- Advancing the **History Trust's strategic** goal of a Museum of South Australian History/Museum of Adelaide
- Resourcing a program to commemorate the **State's 175th** anniversary in 2011
- Continuing to attract more physical visitors
- **Redeveloping the History Trust's on-line** presence
- Developing and managing a web 2.0 **capacity on the History Trust's web site**
- Increasing the number of virtual visitors/users
- Retaining high levels of visitor satisfaction
- Funding the rising costs of the exhibition program
- Marketing Trust programs adequately
- Attracting research funding for the **History Trust's research strategy**
- Displaying and storing the State History Collection adequately
- Securing funding for additional storage space
- Funding a touring exhibition program
- Meeting increased demand for education programs
- Satisfying audience demand for interactivity in exhibitions and on-line
- Funding the digitisation of the collection
- Providing on-line access to the collection and historical research
- **Maintaining and upgrading the Trust's** heritage buildings
- Improving energy efficiency and overall sustainability
- Meeting increased costs for core requirements
- Maintaining value for money at the South Australian Maritime Museum and National Motor Museum
- Growing the level of ex-budget revenue
- Continuing to improve in OHS&W.

Divisional Reports

Community History Programs

Community History Programs provide key programs and services to South Australia's diverse historical community and support that community through grant funds and the long-running Community Museums Program (formerly Museums Accreditation and Grants Program). Established and popular community events include SA History Week and the annual State History Conference. Community History Programs manage a history resource centre that provides advice and assistance to researchers, historical societies, museums and the general public. Staff also manage a significant photographic collection (the South Australian Glass Negatives Collection) and the Directorate section of the State History Collection.



Margaret Anderson addressing delegates at the opening of the 17th State History Conference *Changing Places: Changing Lives*, at the Sunnybrae Function Centre, Regency Park August 2008

Community History Programs

Exhibitions and public programs

SA History Week 2009

SA History Week 2009 took place from Friday 22 May to Sunday 31 May and successfully engaged an estimated 60 000 South Australians with their history.

A total of 337 registrations was received for *SA History Week* 2009 (an increase of 49 activities from 2008). These 337 activities were mounted by 246 different organisations. Activities in 2009 ranged from a funeral re-enactment to dances, tours, displays and workshops – and more **strongly reflected South Australia's cultural diversity than in previous years**. Most of the activities were presented free to the public or at minimal charge, providing opportunities for many South Australians to participate. The event involved people of all ages, from those in their 70s and 80s right down to primary school children.

SA History Week activities in 2009 were spread across the State, including events in regional SA as well as cities and towns. There were also a small number of activities in remote SA. History Week participants in 2009 included major cultural institutions, local museums and historical societies, businesses, heritage-listed places, archives, churches, libraries, local councils, universities, cultural and community groups, and schools. The success of *SA History Week* is facilitated by the thousands of volunteers across the State who contribute the work required to plan, implement, promote and staff activities. Participants in *SA History Week* 2009 report that the event is valuable to their organisations; including increasing visitors and community awareness and attracting new volunteers.

Media coverage of *SA History Week* 2009 was extensive, including Messenger News, Channel Ten News, ABC TV news, Channel Nine's Postcards, SA Life, and regional newspaper coverage. ABC Radio launched History Week with an outdoor broadcast from the University of Adelaide's boatshed on the Torrens River.

History Trust Exhibition Gallery

The exhibition, *Blue Jeans and Jungle Greens: revisiting the 60s and 70s*, launched in February 2008, will remain open until August 2009. This exhibition focuses on the Vietnam War era, a time of great political and social turmoil and generational division. It examines the conflict in Vietnam and the part played by South Australians in the war, and on the anti-war campaign and social movements on the home front. The exhibition features a specially commissioned short film by film artist Malcolm McKinnon. *Blue Jeans* is a very innovative exhibition, bringing together opposing **points of view, still strongly felt four decades on**. The support of the Department of Veterans' Affairs and South Australian Vietnam veteran organisations is greatly appreciated. The Trust also worked with the Friends of the University of Adelaide Library to present a seminar series on topics related to the themes of *Blue Jeans and Jungle Greens*. The final three seminars in the series were held in July, August and September 2008: Professor Peter Edwards on writing the official history of the Vietnam War; the Hon Dr Lynn Arnold on shifts in popular opinion and politics during the Vietnam War; and Professor Susan Magarey on Women's Liberation and Dame Roma Mitchell.

Travelling displays

A travelling version of *Blue Jeans and Jungle Greens* began its regional tour in August 2008, and visited Berri Library and Information Centre, Waikerie Library, Bublacowie Military Museum and Memorial, Port Lincoln RSL, Norwood Town Hall, Mount Gambier Civic Centre, The Old Wool and Grain Store Museum Beachport, Port Pirie RSL and Military Museum, Keith National Trust and Penneshaw National Trust. The travelling display will continue to tour in the 2009/10 year. The History Trust appreciated the support of the ANZAC Day Commemoration Council in the production of the travelling display.

Community History Programs continue to offer three other travelling displays to museums and community venues; this year *Gallipoli: The South Australian Story* toured to the Kingston National Trust and the Mallee Tourist & Heritage Centre at Pinaroo and *Vote Yes: the 1967 Referendum* toured to Mannum Dock Museum.

Other exhibitions

The History Trust partnered with the South Australian Museum Archives and Tandanya National Aboriginal Cultural Institute to produce an exhibition of photographs of Point Pearce Aboriginal Settlement in the 1950s. Called *Children of the Empire*, the exhibition was open for five weeks including *SA History Week* 2009 and *Reconciliation Week*, was well attended, and received positive feedback, particularly from members of relevant Indigenous communities.

State History Conference

The 17th annual State History Conference, called *Changing Places: Changing Lives*, was held at Sunnybrae Function Centre, Enfield, at the beginning of August 2008. The conference welcomed 171 delegates, and included 26 papers on a range of topics related to the conference theme of urban history. It clearly **demonstrated the strength and diversity of the state's history sector**. The Department for Environment and Heritage, State Records of South Australia, City of Port Adelaide Enfield, Grieve Gillett Pty Ltd, the History Council of South Australia and Museums Australia provided financial support to the conference. Planning then commenced for the next conference, called *History... from the ground up*, to be held in Kadina, Moonta and Wallaroo in early August 2009.

Community Museums Program (formerly Museums Accreditation and Grants Program)

This year marked a very significant change for the Community Museums Program (CMP). The National Standards for Australian Museums and Galleries were adopted and the CMP standards completely revised and aligned with the National Standards. A new *Community Museums Program Handbook* was produced. It explains the new standards and clearly defines the particular requirements for registered and accredited museums in the CMP. An extensive series of Help Sheets was also developed to supplement the Handbook content and provide detailed assistance to current and intending registered and accredited museums in all aspects of meeting the CMP/National Standards.

At the end of the financial year, there were 60 museums registered in the Community Museums Program (CMP). Yankalilla District Historical Museum and Prospect Hill Historical Museum re-registered in the Program. Millicent National Trust Museum and the South Australian Aviation Museum were awarded re-accreditation status for a further five years. Staff worked closely with the CMP network during the year, assisting museums with a range of projects, including development of exhibitions, planning, preventive conservation and collection recording. This assistance involved workshops, field trips and extensive ongoing communications with the network. The workshops included a special two-day session on cleaning large objects at Scholz Park Museum Riverton and Disaster Preparedness and Response, at Loxton, both in conjunction with Artlab Australia. Six issues of *MAGP News* (renamed *CMP News* during the year) were produced, providing advice and information for the network.

Country Roads, a collaborative exhibition project led by (then) Community History Unit and National Motor Museum staff and involving five regional museums from the Museums Accreditation and Grants program was on display at the National Motor Museum from June to October 2008. The development of this exhibition, which featured objects and stories relating to the growth and impact of the road network, involved a training component.

In the 2008–09 Museums Accreditation Grants Program grant round, the History Trust received 35 applications from 33 museums totalling \$201 975 for the \$145 000 available. Twenty-eight applicants received a total of 29 grants, including for new displays at Ayers House Museum, Eyre Peninsula Railway Preservation Society, The Mary MacKillop Penola Centre, Norwood History Centre, Penneshaw National Trust Museum and Scholz Park Museum. Smaller projects included improving storage at Melrose Districts History Society and collections management and database projects at Axel Stenross Maritime Museum in Port Lincoln, Crystal Brook Heritage Centre, Kimba & Gawler Ranges Historical Society, Mount Gambier National Trust, Old Highercombe Hotel Museum, the South Australian Police Historical Society and Wallaroo Heritage & Nautical Museum.

South Australian History Fund

In the 2008–09 South Australian History Fund grant round, the Trust received 64 applications totalling \$166 633 for the \$45 000 available. Twenty-four applications gained support. Six research grants were awarded to historians Anne Scrimgeour, Cameron Raynes, Judith Elton, Julie Collins and Pat Sumerling, and to Tony Rogers and the Australian Meteorological Association. The Fund supported three publications and 15 projects, including digitisation projects, and interpretation and oral history projects. The Australian Society of Archivists (SA Branch) added \$1000 to the fund to support storage improvements for locally-held archival material, and the Murray Bridge Rowing Club was allocated this support to purchase archival material to store the **Club's archive**. The Department for Environment and Heritage contributed \$9000 to support heritage interpretation projects, and Fowlers Bay Progress Association and Raukkan Community Council were allocated these funds.

Collection management

Community History Programs continued to assist the Chief Executive to manage the small but growing Directorate collection. Significant donations of South Australian costume were notable additions in the 2008–09 financial year.

Community History Programs staff manage the administration of the KE-EMu collections management database on behalf of all History Trust divisions. Significant in the 2008–09 year has been the upgrading of the host server to enable the growth of the database and the storage of digitised materials.

Community History Programs remain committed to sharing its expertise and skills with other government agencies seeking to record and care for State-owned items of historical significance. A consultancy with SA Water to provide curatorial support one day a week for the 2008–09 financial year has proved valuable to that agency, and has been renegotiated for the 2009–10 year. The Trust is continuing to provide advice to the Department of Health regarding the historical mental health collection held at Glenside Campus.

Community history and partnerships

Community History Programs (CHP) worked extensively with a range of community organisations and other agencies to promote awareness **of South Australia's history and collections**. CHP liaised with almost 250 groups to present **SA History Week** in May 2008, gave advice and assistance to about 100 museums across the state, answered hundreds of enquiries through the Resource Centre for the public, media and researchers, and worked with 13 venues hosting travelling displays.

Two exhibition projects involved partnerships with other cultural institutions. Staff worked with colleagues from the South Australian Museum Archives and Tandanya National Aboriginal Cultural Institute to develop the ***Children of the Empire*** exhibition. A partnership has also been entered into with the Architecture Museum at the University of South Australia to develop the ***Suburban Dreams*** exhibition, which will focus on housing and urban development in South Australia in the period 1945 to 1965.

Community History Programs maintained a close working relationship with related agencies and organisations, including the Artlab Australia, Arts SA, Heritage Branch of the Department for Environment and Heritage, State Records of South Australia, Adelaide City Council, South Australian Museum, State Library of South Australia, South Australian Tourism Commission, National Trust of South Australia, Professional Historians Association, History Council of South Australia, National Archives of Australia, Museums Australia and the Collections Council of Australia.

Research projects

Research began in partnership with the Architecture Museum into postwar housing and urban development for the ***Suburban Dreams*** exhibition. Consultant Alexis Tindall undertook a research project on the Catford collection of costume, acquired by the Directorate section of the State History Collection in the 2007–08 year.

Community History Programs staff also began research into international models for public programs relating to history and museums and assisted the Chief Executive with research for a range of other projects.

Resource management

A re-structure of the former Community History Unit consequent on the retirement of Kate Walsh in December 2008 took effect during the 2008–09 financial year. The positions following this change are: Senior Community History Officer (1.0 FTE: Amanda James); Community History Officer (0.5 FTE: Karen George from February 2009); Senior Curator (1.0 FTE: Mandy Paul); Public Programs Officer (1.0 FTE: Jill McKenzie); Curator Collections (0.6 FTE: Jan Mudge) and Information Resources Officer (0.6 FTE: Lynn Drew).

Community History programs hosted a placement student from the Flinders University International Tourism Course, and an intern from the School of History and Politics, University of Adelaide.

Community History Programs appreciated the contribution of the Trust's Chief Executive, Marketing and Business Units to the successful and efficient delivery of its public programs.

Conclusion

This success of this year's programs was, to a large extent, a product of the continuing close working relationship enjoyed by Community History Programs with the state-wide history sector, and, increasingly, a range of community groups. The achievements of Community History Programs in supporting and promoting the State's history are made possible by the hard work and hard thinking of a small but dedicated team.

MANDY PAUL and AMANDA JAMES
Community History Programs

History Trust of South Australia

Torrens Parade Ground, Victoria Drive, Adelaide 5000
Telephone: +61 8 8203 9888 Fax: +61 8 8203 9883
Website: www.history.sa.gov.au
Email: staff@history.sa.gov.au



Guests at Riddoch Gallery Mount Gambier viewing the display of Major Peter Badcoe's Victoria Cross and the Yandruwandha Burke and Wills breastplate 19 May 2009

Divisional Reports

Migration Museum

The Migration Museum opened in December 1986 as a social history museum with a mission to collect, preserve, document and interpret the history and cultural traditions of South Australia's immigrants. Its challenging brief has been met over its 22 years through a vibrant and creative program of changing exhibitions, educational tours and special events, as well as the development of a significant collection of objects, with particular strengths in documents and textiles. The Museum has worked closely with individuals and community groups in order to achieve its goals and is well known and highly respected among South Australian communities. In addition the Migration Museum is a key destination for both overseas and interstate visitors.



Launch of the Migration Museum's catalogue, September 2008, (left-right) Ms Vicki Chapman, Deputy Leader of the Opposition; the Hon Carmel Zollo, Minister for Correctional Services, Road Safety and Gambling and Minister Assisting the Minister for Multicultural Affairs; Ms Viv Szekeres, Director Migration Museum and Mr Hieu Van Le, Lieutenant Governor of South Australia and Chair, South Australian Multicultural and Ethnic Affairs Commission

Migration Museum

The last twelve months have been months of consolidation for the Migration Museum while new avenues of generating audiences have been explored. The global financial crisis has had a predictable impact with a decrease in total visitor numbers, given that international tourists have always made up a high proportion of visitors to the Museum and this year saw a decline in visitor numbers over the high totals the year before. As a contrast however, the demand for experiential **learning through the Museum's education programs** has seen a rise of over 13 per cent in South Australian student numbers in the same period and a travelling exhibition has attracted a specific cultural group.

Exhibitions and public programs

The focus of the exhibition program this year was the Museum's **changing gallery**, which has featured three exhibitions, two of which were produced in-house. The Museum developed ***Hope: The Utopian Imagination of Young People on the Margins*** in partnership with the University of South Australia, for the 2008 Adelaide Festival of Arts. The display remained open until August, when it was followed by ***Evidence of Survival: The Impact of World War Two in Documents***. Curated by Catherine Manning and Danish intern Martin Jensen, the exhibition drew on the strong collection of documents held by the Museum. It reconstructed the personal stories of several South Australian immigrants of varied backgrounds who survived the horrors of Nazi Germany. In strong contrast, the next exhibition focused solely on Greek Australians. ***Selling an American Dream: Australia's Greek Café*** was curated by Effy Alexakis and Leonard Janiszewski of the ***In Their Own Image: Greek-Australians National Project*** at Macquarie University. The exhibition used photographs to document the Greek café as the Trojan Horse of American culture, and has aroused great interest among members of the South Australian Greek community and very positive feedback from visitors and the media.

In addition the Museum worked with the Organisation of Helene and Hellene-Cypriot Women of Australia Inc (SA), the Cyprus Community of South Australia, the Filipino Australian Heritage Society Inc, the Baha'is of Adelaide and the Tanzanian Community Association of South Australia to produce a series of varied and lively exhibitions in the Museum's **community access gallery, the Forum**. The Museum's touring exhibition ***They Took Our Land and Then Our Children: the 1923 Ngarrindjeri Petition*** also travelled to five regional and city locations in the course of the year.

The Museum had an outstandingly successful year in its education programs, education outreach and special events. In addition to meeting the demand for the core menu of regular programs, the Education staff offered ***Survivors*** (a role-play about refugees), ***Celebrations*** (a program focusing on the traditions of three different cultures), ***La Musica del Che*** (a history through music program) and two comedy presentations: Jason Chong's ***Minority Retort*** and Mujahid Ahmed's ***African Time***.

Education staff also delivered a number of ***Impact of Settlement***, the cultural awareness historical program, to corporate groups both in the Museum and as outreach. However, the highlight of the educational calendar for both students and teachers was a comedy program ***Who Do You Think You Are?*** presented in partnership with ***Come Out 2009*** (Australian Festival for Young People Inc. renowned internationally as the largest and longest standing regional festival for young people in the Southern Hemisphere. This biennial children's festival emerged from the Adelaide Festival of Arts in 1974 and is now Australia's premier young people and the arts event. The comedians' presentations and discussions explored issues of cultural stereotyping and racism, cultural perspectives and cultural identity. Feedback from teachers and the media was very positive.

We were delighted that the Museum's Education Officer, Rosa Garcia, was invited by the United Nations Educational, Scientific and Cultural Organisation (UNESCO) to be a facilitator at the 2008 Global Peace Seminar held in Korea in August.

The refurbished Chapel has proved a valuable space for Museum functions such as a *Philosophers' Café* breakfast, exhibition launches and the Foundation's three morning teas. It was also increasingly used by community groups for seminars and events such as a poetry symposium. However the absence of disabled access has curtailed its use for education programs and some functions.

Collection management

At the end of the financial year the Migration Museum had 7169 objects in the collection with 6985 entered onto the database. Work continued through the year on sorting out issues that developed as a result of transferring old data onto the new database. There have been 26 donations to the collection over the past 12 months, with particular highlights being an exemption certificate for the Commonwealth dictation test for John Sym Choon (1922), a nineteenth century black wedding costume and banners made by the Cambodian and Tanzanian communities. The Museum has lent items to many other organisations including the National Aboriginal Cultural Institute, Tandanya, the John McDouall Stuart Society and the Adelaide Botanic Garden.

The collection is accessioned, researched and managed with the assistance of volunteers who carry out a wide range of tasks – care of the weapons collection, oral history interviewing and transcribing, accessioning objects, photographs and books and entering research material onto a database. The Museum thanks the volunteers for their indispensable work.

Community history and partnerships

Over the past year the Migration Museum has made a significant contribution to the production of the **Latvian community's major publication of its history in South Australia**. Senior Curator Christine Finnimore served on the editorial committee of the history and contributed to some of the research. Both curators also worked in partnership with curators from the Adelaide Botanic Garden on the selection and loan of objects for the exhibition *Harvest* in the restored Museum of Economic Botany. **In the course of the year some of the Museum's holdings of costume reached a new audience through the popular magazine *SA Life* which featured a major article on costume with South Australian provenance.** And former Director Viv Szekeres worked very closely with the Cambodian community who made a banner representing their lives in Cambodia and in South Australia. The community presented the banner to the Museum in a special ceremony.

In December the Pontian Brotherhood of South Australia installed a plaque on the Museum's Memorial Wall. The Memorial Wall serves to commemorate the losses suffered by refugee communities who have subsequently made South Australia their home. The wording on the Pontian plaque generated opposition from members of the Turkish community and the press. In allowing the wording on the plaque the Museum had taken advice from an international body of scholars and the South Australian Parliament later passed a unanimous motion acknowledging that the events commemorated by the plaque had in fact taken place.

The Migration Museum's Foundation committee continues to work to advance the cause of the Museum amongst the wider South Australian community. The Foundation grew by 71 new members to reach a total of 1797 at the end of the year and Settlement Square now has 1834 pavers. Morning teas were held in September, December and May to welcome new members. The Foundation committee also held a special promotional event for members of the Council for International Trade and Commerce South Australia.

Research projects

In September the Lieutenant Governor of South Australia, Mr Hieu Van Le, launched the Migration Museum's catalogue researched and written by Senior Curator Christine Finnimore. The catalogue has filled what was deemed a gap in the Museum's ability to respond to requests by visitors for a souvenir publication of the Museum. The Museum has also reprinted *Behind the Wall: The Women of the Destitute Asylum, Adelaide, 1852–1918* in association with Wakefield Press.

2008–09 has been a busy year for Museum staff who delivered several papers at conferences. Director Viv Szekeres gave a keynote address, 'When too many truncheons are never enough' to the *Interpretation Australia* conference in October. Curators Catherine Manning and Christine Finnimore presented papers at the 2008 State History Conference. They were respectively, 'Hope: Finding a voice for young people in museums' and 'Backyard Frontiers: Nono Zotti's winepress and other immigrant journeys'. In addition Catherine Manning delivered a paper 'Get your own history: Community access at the Migration Museum' to the Museums Australia conference in Newcastle in May 2009. Education Officer Rosa Garcia presented a paper for the World Education Forum on the theme of 'Global Perspectives, Local Relevance'. The curators, assisted by volunteers, have also carried out primary research for the forthcoming exhibition on the homes of South Australian immigrants in the 1950s and 1960s.

Resource management

November 2008 saw the retirement of the Migration Museum's highly-respected Director, Viv Szekeres. Viv had been a curator with the creative team who produced the Museum's first displays and she became Director in 1987. Under her leadership the Museum achieved national and international recognition for its innovative programs. She continues to serve as a member of the Museum's Foundation committee. Former Senior Curator Christine Finnimore succeeded Viv as Director. In other staff changes, front of house staff Ting Adolphus and Margot Politis left the Museum and casual Guide Heather Hayden also worked as a part-time curatorial assistant.

In the course of the year Migration Museum curators supervised interns working in various fields from each of the State's three universities. Alicia Zollo was from the School of Communications at the University of South Australia, Ajeng Arainikasih and Alexandra Tough were studying museum curatorship and history respectively at the University of Adelaide and Amirul Affifudin, who completed a study of the Malaysian community in Adelaide, was a postgraduate student with Flinders University.

Conclusion

This has been a year of solid contribution by the Migration Museum to the preservation, presentation and interpretation of South Australia's immigration history. The Museum's education programs in particular have enjoyed some outstanding success. The Museum's strong presence is due in part to the continued and dedicated efforts of skilled staff and volunteers to ensure that all South Australians have access to their cultural heritage and history.

CHRISTINE FINNIMORE
Director

Migration Museum — 82 Kintore Avenue, Adelaide 5000
Telephone: +61 8 8207 7570 Fax: +61 8 8207 7591
Website: www.history.sa.gov.au
Email: migration@history.sa.gov.au
Admission by donation

Guided Programs

1:00hr \$4.00

1:50hrs \$5.50

2:00hrs \$7.00

\$20.00 – \$40.00 per group for disadvantaged schools from DECS, ESL, Special Education classes

Opening Hours

10:00am—5:00pm Monday to Friday

1:00pm—5:00pm Weekends and Public Holidays

Closed Christmas Day and Good Friday



Tanzanian community members with Vini Ciccarello and Mr Hieu Van Le, Lieutenant Governor of South Australia at the launch of the Tanzanian Community Cultural Exhibition

Divisional Reports

National Motor Museum

The National Motor Museum's reputation as the centre for Australian motoring history continues to grow – a long way from its beginnings as a small private motorcycle museum in a disused flourmill in 1965. Its acquisition by the South Australian Government in 1976 and subsequent incorporation into the newly formed History Trust of South Australia in 1982, laid the foundation for the development of a museum of international standing and a major South Australian tourism attraction.

The Museum today displays over three hundred vehicles in three pavilions. It aims to present the history of the motor vehicle in Australia and the ways in which the motor vehicle has changed Australian society.



Off the beaten track; a journey across the nation exhibition in Burra with Outback Vehicle Recovery and MedSat satellite setup for communication

National Motor Museum

The past 12 months have again been very busy for all the staff and volunteers, with a major touring exhibition, our two large events, *Bay to Birdwood and Rock & Roll Rendezvous* along with our normal program of public programs. Although visitor figures were down approximately 6.5 per cent on last year's figures, we still had 67 900 visitors, which is a significant achievement.

The Museum was also fortunate to retain its long-term sponsor in Holden. All motoring industry in South Australia has suffered financially over the past 12 months, so it was especially pleasing that Holden wished to continue their sponsorship and long association with the museum.

Off the beaten track; a journey across the nation – (the Talbot Tour) celebrating the first crossing of Australia was a significant achievement for the museum and has received accolades from the many people who experienced the exhibition. It was also highlighted at a recent Visions of Australia information session held in Adelaide; Visions was a major sponsor. This exhibition would not have been possible without the generous support of all of our sponsors, museum volunteers and staff.

Exhibitions and public programs

The exhibition program for the past year has been particularly active, with the completion of one major touring exhibition, as well as a temporary and a new permanent exhibition. Curators also managed an active program of smaller changing displays in the community access *Club Space*. The exhibitions program was excellently managed by Senior Curator Allison Russell.

To start the year we had our very successful touring exhibition *Off the beaten track; a journey across the nation*. This touring exhibition commemorated the centenary of the first continental crossing by a motor vehicle. Following as closely as possible the original journey from Adelaide to Darwin undertaken by Harry Dutton and Murray Aunger, the tour visited 23 towns and 21 schools en route. Over 23 000 people saw the exhibition between Adelaide and Darwin. The original Talbot motor car that was the centrepiece of the exhibition is maintained in running order and was driven out of Adelaide, into Alice Springs and into Darwin, although in deference to its age, it was carried by trailer for the remainder of the journey.

Significant media interest was generated by the tour, and a website with daily blog updates and extensive education materials was maintained. A program of lectures/education programs was also presented en route. These included talks at Kapunda (30 June), Burra (3 July), Peterborough (5 July), Alice Springs (25 July), Daly Waters (13 August), Adelaide River (18 August) and Darwin (20 August), and education programs at Kapunda Primary School, Kapunda High Schools, Eudunda Area School, Robertstown Primary School, Burra Community School, Marree Aboriginal School, Oodnadatta School, Mintabie School, Indulkana School, Ti Tree School, Neutral Junction School, Ali Curung School, Tennant Creek High School, Tennant Creek Primary School, Elliott School, Newcastle Waters School, Mataranka Primary School, Pine Creek School, Adelaide River School, Batchelor School. Total school students who saw the exhibition numbered 1923.

The exhibition tour was funded by Visions of Australia and supported by Outback Vehicle Recovery, the Royal Automobile Association of SA Inc (RAA), C&PA (SA) Pty Ltd, MedSat Technologies, Orion, ABC Local Radio and Treg Trailers.

We owe a special debt to our wonderful partners Russ and Liz Driver of Outback Vehicle Recovery, who took three months away from their business to drive the trailer along the entire route with us – an extraordinary contribution.

The main temporary exhibition space in the Museum was used to display *Shades of Green*, an exhibition exploring the history and future of the fuels we use to power our cars. This exhibition aimed to provide visitors with an introduction to the topic and was sponsored by SGIC.

Model behaviour

Focussing on the history of toy and model cars and those who are passionate collectors, this long-term exhibition has been designed with younger audiences in mind. It showcases the collections of three local collectors (including Eric Hauschild, whose collection was donated to the Museum some years ago). An additional aspect of the exhibition is a children's play area.

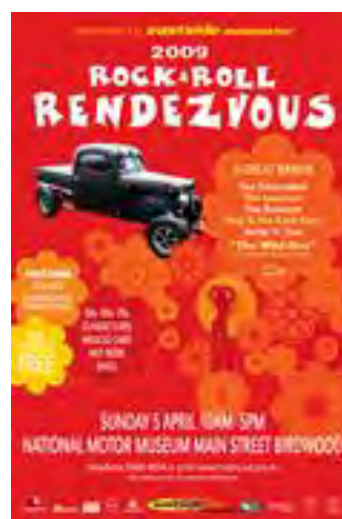
Club Space

Our community area for motoring enthusiasts, Club Space, is still proving to be extremely popular, with exhibitions over the past twelve months presented by the Triumph Sports Club, Austin 7 Club, HD-HR Holden Club, Sprite Club, Jowett Owners' Club and Classic Owners' Motorcycle Club.

Events

The National Motor Museum holds two major events annually – the *Bay to Birdwood* and *Rock & Roll Rendezvous*. The *Bay to Birdwood Run* held on 28 September was once again a huge success, with the largest number of public visitors through the gates since 2001. This was due, we believe, to increased advertising and the generous support of Channel 10. The *Rock & Roll Rendezvous* also continues to grow, with both vehicle entrants and public visitor numbers increasing again after a bit of a lull.

An Open Day was also held on Saturday 29 November to celebrate the 60th Anniversary of GM Holden and to acknowledge their long-term sponsorship of the museum. Pauline Renner manages the events at the museum extremely professionally.



Collection management

The Curation team at the museum continued to work on the management of the significant collection of vehicles, memorabilia and other objects in our care. The collection continues to grow with the addition of:

- 1950 Healing Ladies Bicycle
- 1964 Toyota Tiara Sedan
- 1967 Bridgestone 90cc Motorcycle
- 1928 Dodge model 128 Fast Four tourer
- 1999 AEV/Willmot Petrol Electric Hybrid Truck
- A collection of Adelaide Hills road passenger transport items, including bus ticketing machine, name plates and microphone/radio.

Curatorial staff Allison Russell and Matthew Lombard also continued to manage a large number of requests for information about the collection, ably assisted by a group of volunteers – Wolfgang Warmer, Chris Bennett, Richard Sage, Dave Richardson and Darryl Grey. We thank them all most sincerely.

The curatorial staff has also been working hard on our storage problems. During the year one area was reorganised and new shelving installed to enable us to sort, label and box the hundreds of spare vehicle parts in the collection. We also continue to work on the preservation of the collection with Artlab Australia. One of the significant projects underway is the conservation of our 1914 Favourite Motorcycle – a South Australian motorcycle manufactured in Peterborough by Smiths Brothers.

Community history and partnerships

The Museum continued its program of community engagement over the past twelve months with displays at All British Day, All Ford Day, All American Day, GM Day and other smaller vehicle club events. We had a significant display of six South Australian manufactured vehicles presented in Rundle Mall on the first Friday of **SA History Week**. Three of these were Museum collection vehicles and three were on loan. This was a particularly successful display, with many people showing strong interest in the vehicles.

Allison Russell presented a number of public talks during the year. She gave two guest lectures at Flinders University to the Museum Studies students, gave an after dinner speech about the National Motor Museum to the Adelaide Vascular Trials faculty, spoke about the early history of Holden to the Friends of Cummins House and the Adelaide Treasure Hunters Club, and gave a presentation to the Chrysler Restorers Club about the travelling exhibition ***Off the beaten track; a journey across the nation***.

Kym Hulme also spoke to the Adelaide Hills Medical Group and the Unley Rotary Group about the National Motor Museum's Collection.

Director Kym Hulme was elected Chairman and Curator Matthew Lombard was elected Secretary of the Australasian Motor Museums Association. Kym Hulme was also appointed to the Adelaide Hills Tourism Committee.

Artist-in-residence

Printmaker Susan Clarkson accepted an invitation to work at the Museum for five days. In addition to conducting workshops with school children from the local primary and high schools, she also made work of her own, which will be displayed at the Museum during SALA week, as part of an exhibition called ***Chrome***. This exhibition will also feature sculpture by Neil Rogers and artists books by Mary Pulford, who worked with Susan during her residency.

Resource management

During the year staff participated in a range of training programs, including sponsorship, OHS&W and senior first aid.

Allison Russell, the Senior Curator, has accepted a secondment to fill the position of Senior Community History Officer at the History Trust during Amanda James' maternity leave.

Of course, the Museum is entirely dependent on a range of corporate sponsors who provide funds for exhibitions and public programs. I would like to thank all of our sponsors most sincerely for their ongoing support and look forward to continuing to build mutually beneficial relationships with them. They are acknowledged by name later in the report.

Conclusion

The National Motor Museum's reputation as a leader in the interpretation of Australian motoring history was certainly enhanced over the past year, particularly through the enormous success of the Talbot touring exhibition. I will be delivering a talk to the World Forum of Motor Museums in Italy later this year highlighting this exhibition.

We have also continued our active involvement with the motoring community, and it appears to be having an impact on vehicle clubs wanting to use our grounds for special anniversary displays.

In conclusion I would like to thank all of our staff and volunteers who have been partners in this great result and look forward to continuing success in years to come.

KYM HULME
Director

National Motor Museum — Shannon Street, Birdwood 5234
Telephone: +61 8 8568 4000 Fax: +61 8 8568 5195
Website: www.history.sa.gov.au
Email: motor@history.sa.gov.au

Admission Charges

Adults	\$ 9.00	Concession	\$ 7.00
Children	\$ 4.00	Family	\$24.00

Opening Hours

10:00am—5:00pm Daily except Christmas Day

Divisional Reports

South Australian Maritime Museum

The South Australian Maritime Museum cares for the oldest nautical collection in Australia, a collection begun in Port Adelaide in 1872. It has earned an international reputation amongst maritime museums and is recognized as one of the premier tourist attractions of South Australia.

The Maritime Museum was established in 1986 to collect, preserve and promote the State's maritime history. The Museum is spread over several sites including the Bond Store exhibition galleries, the Port Adelaide Lighthouse, the Bank administration building, stores at Netley and Dock Two Port Adelaide and three major vessels – Nelcebee (1883) the oldest powered ship in Australia, police launch Archie Badenoch (1942) and steam tug Yelta (1949).



Captured on Canvas: John Giles' Port Adelaide 1930 to 1960
Exhibition, South Australian Maritime Museum, April 2009

South Australian Maritime Museum

Once again the Museum's visitor numbers exceeded our target and our results for the previous year. That outcome is the result of our active calendar of changing exhibitions, education and holiday programs that are targeted to reach a range of audiences. The result is also a measure of the continuing relevance of the Maritime Museum and growing community interest in history.

Exhibitions and public programs

The Maritime Museum places a great emphasis on ensuring that our programs are more than accessible, that they go further to find new ways to engage wider audiences. Judging popular appeal is often an art rather than a science so it is very satisfying to report that the Museum's visitor figures have continued to increase over the past three years.

We have invested a lot of time and effort in boosting our holiday programs. Our January program, *Pirates! Skulduggery at the Maritime Museum*, combined an interactive exhibition for younger children with theatre and cruises on the Port River. It has been a continuing success in bringing a younger audience to the Museum. We also presented a *Dolphin Festival* during the April school holidays to build on the attractions of our *Dolphins* exhibition and our cruises on the Port River that enable passengers to listen to dolphins via the vessel's hydrophone as well as see them.

Popularity is only one measure of success and, like most museums, we also place strong value on education and enrichment. Our education programs have been a particular strength. Once again, we set a record for the largest number of students visiting the Maritime Museum. Our programs were presented in partnership with the Outreach Education Section of the Department of Education and Children's Services. The programs range from audio tours of Port Adelaide's heritage precinct presented on MP3 players, tours of the container terminal and the working port presented in partnership with Flinders Ports and DP World Terminals, to interactive programs based on the Museum's exhibitions. The programs were well supported by volunteers. We have a group of volunteers who crewed the vessels that took students on cruises of the Port River and another from the Whale and Dolphin Conservation Society, who lead environmental studies. The Veterans Association of the Maritime Union also introduced students to our traditional ketch and South Australia's grain trade.

Alongside our attractions for a younger audience, the Maritime Museum has continued to produce substantial exhibitions reaching adult audiences. We produced *Quest for the South Magnetic Pole* in partnership with the South Australian Museum. The exhibition presented views on one of the longest quests in the history of exploration – a search that extended from James Cook's voyages in the 1770s, included the expeditions of Ernest Shackleton and Douglas Mawson, and remarkably, was not concluded until the year 2000, when Australian scientist Charlie Barton became the first person to reach the South Magnetic Pole.

Supported by the Commonwealth Government's Visions of Australia program, the exhibition has been produced for a national tour. It was a pleasure to work with the South Australian Museum and I believe that the combination of historical and scientific perspectives that the partnership brought together produced a truly stimulating exhibition.

We also presented ***Captured on Canvas: John Giles' Port Adelaide 1930 to 1960.*** That exhibition presented a rich body of work from a relatively undiscovered artist who lived and worked in Port Adelaide. Giles made his living as a tailor and spent his free time painting seascapes of the Port. He is represented in the collections of the Maritime Museum and the Art Gallery of South Australia, **but is largely unknown. Giles' paintings capture the working port in its heyday including the boat yards and the working ketches against the background of the sugar refinery and the flour mills.**

For some generations of South Australians the exhibition evoked memories of their childhood. For others it showed views of how the Port might have been before the changes brought by containerization and urban redevelopment. The exhibition was produced with the generous support of the Giles family and in cooperation with the National Trust of South Australia.

The year also saw the completion of the national tour of our exhibition ***The River – Life on the Murray–Darling.*** That exhibition explored the social history of those who have lived and worked on the River from the Ngarrindjeri people to soldier settlers, irrigators, riverboat traders and fishers. **The exhibition completed its tour of eight museums in three states by visiting Wagga Wagga's Museum of the Riverina and Albury's Library Museum. It was produced in partnership with the Australian National Maritime Museum, another very successful collaboration, and toured with the assistance of the Visions of Australia program.**

Collection management

The changing landscape of Port Adelaide has focused public interest on the historic Inner Harbor as the traditional centre of shipping in South Australia, and on its heritage as a working port. The **Museum's steam tug *Yelta***, which has been based in the Inner Harbor since 1949, and our timber launch ***Archie Badenoch***, which was built there in 1942, are now valued by the community as the **last working vessels in Port Adelaide's Inner Harbor.**

Like working vessels in all maritime museums, their industrial scale and their hostile marine environment presents particular conservation challenges. Our Museum is very fortunate to be supported by dedicated crews of volunteers who maintain and operate the historic fleet. Their efforts were recognized in September 2008 when the Mayor of the City of Port Adelaide Enfield presented ***Yelta's*** volunteer crew with the keys to the city. It was a gesture that marked the first **Merchant Navy Day and the role that seafarers have played in Port Adelaide's history. It also recognized the work of *Yelta's* volunteer crew in preserving one of the last working vessels in the Inner Harbor.**

It has been a very active year for ***Yelta's*** crew. They completed major work on the tugboat over Christmas 2008, replacing its rubbing bar, inspecting the propeller shaft, slipping and painting the hull and returning the vessel to commercial survey.

As well as maintaining the vessels, some important progress was made in developing the **Museum's collection. One of our priority areas is the expansion of the collection relating to the exploration of the southern coast, and this year the Friends of the South Australian Maritime Museum decided to devote their funds to that program. We purchased a set of prints documenting **Matthew Flinders' voyage circumnavigating Australia in 1802–03.** The prints were published in 1814 from paintings produced by the ***Investigator's*** artist William Westall, and include views of Kangaroo Island and Memory Cove at Port Lincoln. We were also fortunate to receive a generous gift for the collection, a **first edition of *Flinders' Voyage to Terra Australis* published in 1814.** Those acquisitions build on the Museum's existing collection, including the anchor from Flinders' ship ***Investigator.*** One of our priorities for coming years is to continue to develop that collection.**

Community history and partnerships

As a small organization we are alive to the benefits of building partnerships that extend the capacity of our programs. During the year we worked on significant projects in partnership with the Department of Education's Open Access College, the Whale and Dolphin Conservation Society, the Little Big Book Club, the Maritime Union of Australia Veterans Association, the South Australian Museum, the State Library of South Australia, the Royal Institution of Australia, the National Trust of South Australia and the Australian National Maritime Museum. Those partnerships enabled us to produce national touring exhibitions, education programs and community exhibitions and they expanded the range of expertise as well as the resources that were brought to our projects.

With the support of Flinders Ports, we presented community access days that provided free entry to the Museum, recognizing that admission charges can be a barrier for many people in the community. The Museum also supported a number of community events. We supported *Light on the Water* as the principal Anzac Day event in Port Adelaide. We provided one of our vessels for *Flotilla for Kids*, an event that raised awareness of childhood cancer. We also supported the establishment of a Seafarer's Memorial in Port Adelaide and helped to mark the commemoration of the first official Merchant Navy Day on 6 September 2008.

Research projects

The redevelopment of Port Adelaide continues to generate interest in its history and, for archaeologists, the changes present opportunities to study the landscape before it is built on and locked up for another generation. The Museum joined Flinders University and the Department for Environment and Heritage in a partnership to study the archaeology and the management of Port Adelaide's heritage during its redevelopment. As well as contributions from the partners, the three year program is supported by an Australian Research Council Linkage grant.

We have continued our research into South Australia's ketch trade. The Museum's ketch *Nelcebee* was one of the last two vessels to work that trade and in 1986 was the third oldest vessel on Lloyd's Register of Shipping. We marked *Nelcebee's* 125th anniversary in September 2008 with a crew reunion. It was a wonderful event that brought together those who had worked on the ship from the 1940s to the 1980s and has been the start of an oral history project to record their stories.

The Museum has also supported national projects. It is represented on the Steering Committee for the Australian Register for Historic Vessels. It currently leads the Australian Maritime Museums Council and has been instrumental in bringing together a national conference in Hobart in February 2008 which explored common issues in preserving historic vessels, and is planning the next conference for Warrnambool in February 2009.

Resource management

The Maritime Museum continued to enjoy the support of several key sponsors. Flinders Ports continued their generous support of the Museum's exhibitions and education programs, sponsoring *Quest for the South Magnetic Pole* and our tours of the working port. AGL's Torrens Island Power Station generously sponsored the launch *Archie Badenoch* and its programs, which take school groups on tours of the Port River studying the marine environment. The generosity of Flinders Ports and AGL has been fundamental to our success.

Unfortunately, the Museum's off-site collection store suffered a minor disaster in March 2009. Repair work left the roof unsecured and the first rains in months flooded an area of 35 square metres to a depth of one centimetre. Fortunately, the flooding was contained and there was no **substantial damage to the Museum's collection. That containment was due** to a number of factors. Our work with Artlab Australia in disaster preparedness and training left us able to respond quickly to mitigate the damage. The ready support provided by staff throughout the History Trust and Artlab provided the people with the skills to respond quickly and our storage practices provided additional layers of protection for the collection that proved to be critical.

Conclusion

It is gratifying to be able to report a continuing increase in the number of people visiting the Museum and taking part in our programs. That is one important measure of the success of the **Museum's role in the community. It is equally gratifying to be able report a balanced program of exhibitions and events that reached a range of audiences, initiatives to extend our role in the community and to also report on our work in preserving the State's heritage and the progress of** some valuable research projects.

KEVIN JONES
Director

South Australian Maritime Museum — 126 Lipson Street, Port Adelaide 5015

Telephone: + 61 8 8207 6255

Fax: + 61 8 8207 6266

Website: www.history.sa.gov.au

Email: maritime@history.sa.gov.au

Admission Charges

Adults	\$ 8.50	Concession	\$ 6.50
Children	\$ 3.50	Family	\$22.00

Opening Hours

10:00am—5:00pm Daily except Christmas Day

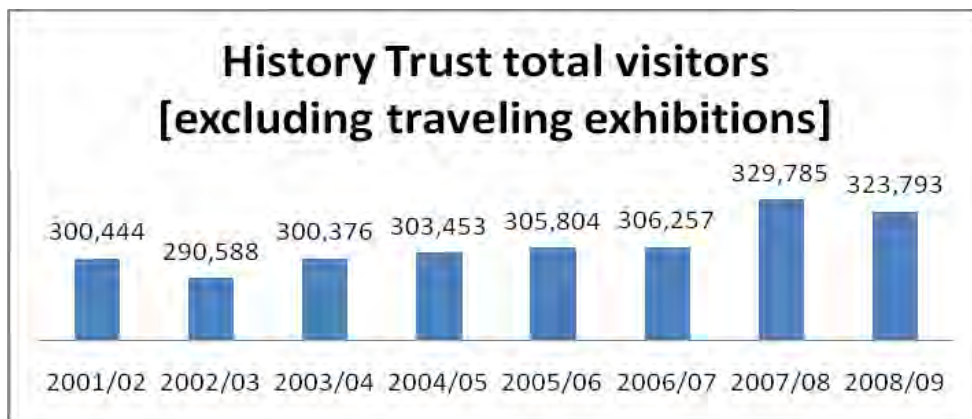


Quest for the South Magnetic Pole exhibition

Divisional Reports

Marketing and Sponsorship

The Marketing Unit is based within the History Trust Directorate. It provides marketing services to all divisions of the Trust and assists in securing sponsorships. In addition, it conducts regular visitor surveys and researches tourism trends in South Australia. The History Trust's website is maintained and updated by the Unit.



Marketing and Sponsorship

The History Trust of South Australia experienced a slight decrease in visitor numbers in the 2008-09 financial year compared to the previous year. Exactly 323 793 people visited a Trust museum or gallery, which represents a decrease of 5992 (1.8 per cent) from the previous year. The National Motor Museum saw a decrease of 3.17 per cent, the Migration Museum a decrease of 8.5 per cent, whilst the South Australian Maritime Museum saw an increase of 2.1 per cent. Visitors to the History Trust Exhibition Gallery increased by 16.3 per cent, whilst patronage of the Queens Theatre increased by 54.9 per cent.

The National Motor Museum experienced its second highest visitor total since 1999–2000. The South Australian Maritime Museum experienced its highest visitor total since 1997–98 and its January figure of 12 670 is the third highest monthly total in the past 13 years. The Migration **Museum's decrease can probably be attributed to the impact of the global financial crisis on tourism.** Interstate and international tourists comprise approximately 70 per cent of the **museum's visitors** annually. The History Trust Exhibition Gallery attracted the most visitors since opening in 2004.

The History Trust corporate, National Motor Museum, South Australian Maritime Museum and Migration Museum each had one or more travelling exhibition on tour around South Australia, as well as interstate. A total of 41 758 people experienced six travelling exhibitions.

The History Trust is very anxious to improve its on-line profile. Consequently a great deal of work was undertaken with a Web Strategist to plan a wholesale redevelopment of the Trust website. **One strategic goal is to increase relevant content on the State's general history, and especially to incorporate an interactive experience for users.** As a preliminary to the development, a major review of existing content was completed, as a result of which a great deal of dated material was removed. Perhaps as a result, visits to the website were fairly static this year, after several years of rapid growth. We hope that there will be significant change next year.

Media profile

To the best of our knowledge the Trust received 1080 mentions in print, radio, TV and online media, including feature print stories and staff broadcast interviews. It is understood that many other mentions were made but not picked up by the **Trust's media monitoring service.** The Trust's corporate division received 545 print, radio, TV and online mentions, the Migration Museum 62, the National Motor Museum 314 and the South Australian Maritime Museum 159. This quantity of coverage was assisted by the investment in a national media on-line database and improved media relations strategies.

Marketing activity continued to focus on the Museums' changing exhibition programs, with a focus on radio advertising due to the additional complimentary air time and promotional activity that is provided. Generic ongoing radio advertising proved fruitful for the National Motor Museum. A series of ongoing generic television commercials, also for the National Motor Museum, was aired on Channel 9 and then Channel 10, after the Trust appointed Channel 10 as its broadcast partner. The Trust thanks Channel 10 for its substantial support in the production of television commercials and the generous provision of free airtime. The South Australian Maritime Museum's advertising focused on its changing exhibitions during school holiday periods, predominantly through print media and television. This proved very successful.

The increased profile of **SA History Week 2009** was another significant achievement with over 60 000 people experiencing the event state-wide. The event also received an overwhelming response from the broadcast and print media state-wide.

History Trust Public Programs

History Trust Exhibition Gallery

Throughout the year 7141 visitors entered the gallery which represented a significant increase of 16.3 per cent over the previous year (+1168). Given that the gallery opening times were restricted to weekdays only, this was a very pleasing result. The exhibition exhibited during this period was *Blue Jeans and Jungle Jeans: Revisiting the 60s and 70s*.

SA History Week

SA History Week 2009 was experienced by over 60 000 people, indicating that its profile is still growing rapidly. This year it was launched with an 891 ABC Adelaide outside broadcast in The University of Adelaide's boatshed along the River Torrens. Peter Goers hosted the broadcast and it was themed around the history of the River Torrens.

Messenger Community News continued their support of the event by running editorial in their papers. Unfortunately they were not able to run their usual dedicated 'wraparounds' due to financial constraints. However their coverage was supported by significant editorial content over the three weeks before and during the week itself. The Trust thanks 891 ABC Adelaide and Messenger Community News for their continued support of this event. A story also appeared on *Postcards* which promoted the opening of Government House during *SA History Week*.

A dedicated mini-website was developed to better assist with public enquiries. Twenty thousand printed programs were distributed state-wide with posters and corflute signs for participants to display outside their venues.

The event received significant statewide editorial coverage on radio and in print, with a particular focus in regional areas. The Trust also thanks The University of Adelaide, Department for Environment and Heritage and Adelaide City Council for their ongoing financial support of this event. Once again, the event proved a most effective profiling mechanism for the Trust and the State's history, and is well worth the significant human resources invested in it.



SA History Week 2009 program
22-31 May 2009

Migration Museum

A total of 159 454 visitors experienced the Migration Museum this year. This was a decrease of 8.5 per cent (-14 899), from the previous year. However the previous year was probably an anomaly, with the Museum actively involved in the Adelaide Festival and Cello Festival, both of which greatly increased the number of visitors and profile of the Museum. The impact of the global financial crisis on tourism in the second part of the year was also a probable factor, since tourists make up some 70 per cent of museum visitors each year.

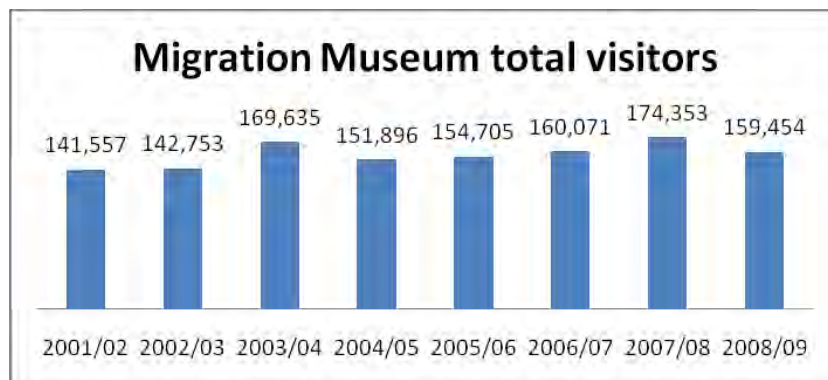
With an extremely limited marketing budget, marketing efforts were directed towards generating free editorial from television, press and radio for the changing exhibition program and other activities at the Museum, including the exhibitions *Hope: The Utopian Imagination of Young People on the Margins*, *Evidence of Survival: The Impact of World War Two in Documents* and *Selling an American Dream: Australia's Greek Café*. ABC local radio conducted a fantastic outside broadcast within the *Evidence of Survival: The Impact of World War Two in Documents* exhibition and interviewed selected people profiled in the displays. This was a highly emotional and effective broadcast.

The Marketing Coordinator also assisted the Museum to source prominent comedians for the *Who Do You Think You Are?* comedy program aimed at high school students, which was a great success.

The Settlement Square television commercial was updated and provided to SBS to run during unpaid airtime as a community service announcement.

The following community displays held in the Community Access Gallery were reported in the media:

- *Cyprus Community in SA*
- *Filipino Cultural Heritage*
- *the Baha'is*



National Motor Museum

The National Motor museum had another successful year with visitor figures reaching 67 900 – the second highest number of visitors since 1999–2000. There was a slight decline on the **previous year's figures (3.2 per cent)** – a decrease of 2228 – but in the light of the general decline in tourism numbers, this was a very good result.

The two major events held at the Museum, the *Bay to Birdwood Run* and the *Rock & Roll Rendezvous*, continued to be important in maintaining visitor numbers with 13 295 attending these events. Although this figure is substantial, had the *Bay to Birdwood* been a 'Classic' event it would have **attracted greater visitors than the 'Run' event** and inclement weather on the morning of the *Rock & Roll Rendezvous* may also have dissuaded some visitors. This was the first time the **Trust's marketing unit undertook the marketing for the Bay to Birdwood** event and visitor research indicated that the model adopted was very successful. The Museum wishes to acknowledge the major ongoing support of Eastside Automotive, as well as Natrad, SGIC, Channel 10 and Australian Audio and Lighting Technology for the *Rock & Roll Rendezvous* event.

A focus on generic advertising on both television and radio was the basis for the National Motor Museum marketing plan this year. Generic radio advertisements featuring various cars exhibited in the Museum were aired on radio stations MIX 102.3 and Cruise on two weeks of every four. The objective was to build the general profile of the Museum, rather than relying on individual exhibitions to encourage visitors. A series of three generic television commercials also aired on Channel 10. **Channel 10's commitment in providing airtime for these commercials during prime viewing time** was greatly appreciated.

Editorial coverage was used to promote the *Lobethal Grand Prix* and *Shades of Green* exhibitions and various car club displays.

A special thank you to Holden for its continued support of the Museum again this year. This was the 11th consecutive year Holden has supported the Museum. It is very rare for a corporate partnership to have such longevity and it is great to see Holden now actively leveraging their support.

The Museum also wishes to thank the RAA, Visions of Australia, ABC Local Radio, Treg Trailers, C&PA, Outback Vehicle Recovery, MedSat Technologies and reachnet for their support of the *Off the beaten track; a journey across the nation* travelling exhibition. Significant effort was invested in the promotion of this exhibition, including an overwhelming volume of local and national print coverage, interviews and mentions on local and national radio, including ABC National's *Bush Telegraph* and *Perspective* programs. The story also appeared on ABC's *Stateline* program and Channel 9's *Postcards*. A media release schedule which released the story in regional areas along the journey was distributed. ABC Radio in South Australia and the Northern Territory planned several live crosses and a regional outside broadcast in Burra. A dedicated mini-website was developed to promote the project, featuring a blog for the event. Over 22 619 people experienced this exhibition, which is a huge outcome considering the remote areas it visited. The exhibition was a significant profiling opportunity for the Museum.

The outstanding arrangement with *Just Cars* magazine continued throughout the year. This partnership provides a full page dedicated to the Museum each month. The page details exhibitions and events and profiles a range of vehicles in the collection. Over 300 000 magazines are printed monthly and it is the best-selling car magazine in the country. This is another fantastic profiling tool for the Museum and the Museum thanks Just Magazines for their support.



South Australian Maritime Museum

The financial year closed with visitor figures reaching 74 010, well above the projected target of 70 000. This represented an increase from the previous year of 2.11 per cent (1566 visitors) and is the highest figure since 1997–98. The January school holiday period was extremely busy with 12 670 visitors. This represented the third highest monthly figure since July 1996.

During the July school holiday period the exhibition *Wrecked! Tragedy and the Southern Seas* was displayed. During this period, no advertising was purchased in order to retain those funds for expenditure during the busy later school holiday periods. However, a television commercial was produced and aired on Channel 10 free of charge, and supported by media editorial content.

During the October school holidays *Wrecked! Tragedy and the Southern Seas* was advertised in the *Advertiser* and *Sunday Mail*, as well as on Channel 10.

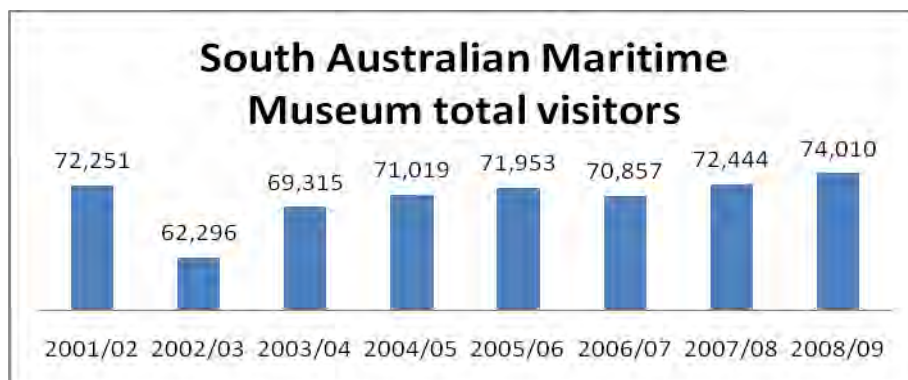
Over 12 600 people visited the children's exhibition *Pirates! Skullduggery at the Maritime Museum* during January 2009, thanks to a print campaign in the *Advertiser* and *Sunday Mail* and a new commercial on Channel 10. The print advertisement featured a competition in which the winner could win a 'pirate pack'. This simple mechanism received many entries. Repeating this exhibition over two successive summer vacations cemented this museum as a January school holiday destination, which is a great outcome. During the April school holidays the generic radio advertising promoted the Museum as a school holiday destination.

On opening, the *Quest for the South Magnetic Pole* exhibition was promoted via a new television commercial thanks to Channel 10 and press advertisements in the *Advertiser* and *Sunday Mail*. The exhibition was also featured on Channel 7's *Discover* program, Channel 9's *Postcards* program and Channel 10's *Totally Wild* program.

Flinders Ports also kindly funded community access days enabling the Museum to offer free admission on Sunday 7 September, Saturday 23 and on Sunday 24 May 2009, all of which were promoted on radio stations MIX 102.3 and Cruise. Messenger Community News also generously sponsored the free days by providing significant editorial coverage.

During September 2008, the 125th birthday of the historic vessel *Nelcebee* was celebrated with a reunion of former crew members. This reunion received significant media coverage nationally. The vessel's desperate need for restoration was promoted, along with the Museum's long-term plans to use it as a platform from which to deliver a new range of educational programs.

The Museum would like to thank AGL for its ongoing support of the Museum's historic vessel, *Archie Badenoch*, throughout the year.



Sponsors

The History Trust of South Australia is very grateful to our wide array of sponsors. They are the foundation for many of our programs and we could not function effectively without them.

- | | |
|---|--|
| • 891 ABC Adelaide | • MedSat Technologies |
| • Adelaide City Council | • Messenger Community News |
| • AGL Torrens Island Power Station | • Migration Museum Foundation |
| • Australian Audio and Lighting Technology | • Mix 102.3 FM |
| • Australian Society of Archivists (SA Branch) | • Mount Lofty House |
| • C&PA | • Museums Australia (SA Branch) |
| • Chain of Ponds | • Natrad |
| • Channel 10 | • Outback Vehicle Recovery |
| • Coca Cola | • Paint Supplies |
| • Cruise FM | • Printmatters |
| • City of Port Adelaide Enfield | • Royal Automobile Association of SA Inc (RAA) |
| • Department for Environment and Heritage | • reachnet |
| • Department of Health | • Repco |
| • Department of Veterans' Affairs | • Reconciliation South Australia |
| • Duttons Holden | • SGIC |
| • Eastside Automotive | • State Records of South Australia |
| • Flinders Ports | • The Manna at Hahndorf |
| • Friends of the University of Adelaide Library | • The University of Adelaide |
| • Grieve Gillett Pty Ltd | • Tiers View |
| • History Council of South Australia | • Treg Trailers |
| • Holden Ltd | • Visions of Australia Touring Program |
| • Lane Print Group | • Welsh and Leo |
| • Lavender Greene | |

KYM CHEEK
Marketing Manager

Divisional Report

Business Services

The Business Services Unit provides financial and administrative services to the organisation and operates centrally from the Directorate at the Torrens Parade Ground.

The Unit also continued to focus on Occupational Health, Safety and Welfare requirements, working closely with other History Trust divisions and Arts SA.

Queen's Theatre

Thirty two groups used the Queen's Theatre from July 2008 to June 2009. Once again the site was hired for a wide range of uses including private functions, corporate and cultural events. A total of 15 038 people visited the Queen's Theatre site during this period and the theatre was occupied for 205 days. Hire Income for financial year ending June 09 was \$31 100.

Maintenance work and inspections have been carried out as per Queen's Theatre annual maintenance schedule.



The Queen's Theatre

MANAGEMENT OF HUMAN RESOURCES

Staffing – Directorate

In March 2009 the Information Technology (IT) & Financial Officer Cherie Saunders returned from special leave without pay and consequently Rebecca Baker returned to her substantive position at the South Australian Maritime Museum.

Employee numbers, gender and status

Total Number of Employees		
Persons	64	
FTEs	44.36	(FTEs shown to 2 decimal place)
Gender	% Persons	% FTEs
Male	29.69	33.21
Female	70.31	66.79
Number of Persons During the 08–09 Financial Year		
Separated from the agency		11
Recruited to the agency		7
Number of Persons at 30 June 2009		
On Leave without Pay		0

Number of employees by salary bracket

Salary Bracket	Male	Female	Total
\$0 — \$47 999	12	22	34
\$48 400 — \$60 999	4	14	18
\$61 000 — \$78 199	0	8	8
\$78 200 — \$98 499	3	0	3
\$98 500 +	0	1	1
TOTAL	19	45	64

Status of employees in current position

STATUS OF EMPLOYEES IN CURRENT POSITION					
FTEs	Ongoing	Short-Term Contract	Long-Term Contract	Other (Casual)	Total
Male	8.73	1.21	4.00	0.79	14.73
Female	20.63	3.54	4.50	0.96	29.63
TOTAL	29.36	4.75	8.50	1.75	44.36
Persons	Ongoing	Short-Term Contract	Long-Term Contract	Other (Casual)	Total
Male	10	2	4	3	19
Female	29	6	5	5	45
TOTAL	39	8	9	8	64

Executives

EXECUTIVES BY GENDER, CLASSIFICATION AND STATUS										
	Ongoing		Contract Tenured		Contract Untenured		Other (Casual)		Total	
Classification	Male	Female	Male	Female	Male	Female	Male	Female	Male	Female
EXEOA						1				1
TOTAL						1				1

Leave management

AVERAGE DAYS LEAVE PER FULL TIME EQUIVALENT EMPLOYEE					
Leave Type	2004-05	2005-06	2006-07	2007-08	2008-09
Sick leave	6.32	5.07	5.63	6.81	5.50
Family carer's leave	0.34	0.62	0.64	0.75	1.00
Miscellaneous Special leave	0.68	0.88	0.57	0.58	0.70

Workforce diversity

The History Trust recognises the value of workforce diversity and the benefits inherent in having a workforce that is representative of the community it serves.

Workforce Diversity: Aboriginal and Torres Strait Islander employees

Salary Bracket	ATSI staff	Total staff	Percentage ATSI	Target*
\$0-\$47 999	0	34	0	2%
\$48 000-\$60 999	0	18	0	2%
\$61 000-\$78 199	0	7	0	2%
\$78 200-\$98 499	0	3	0	2%
\$98 500+	0	1	0	2%
TOTAL	0	64	0	2%

* Target from South Australia's Strategic Plan

Workforce diversity: Age profile

NUMBER OF EMPLOYEES BY AGE BRACKET BY GENDER					
Age Bracket	Male	Female	Total	% of Total	South Australian Workforce* Benchmark*
15-19	1	0	1	1.56%	6.5%
20-24	0	0	0	0%	10.3%
25-29	0	1	1	1.56%	11.1%
30-34	1	6	7	10.94%	10.7%
35-39	3	3	6	9.38%	11.7%
40-44	2	8	10	15.63%	11.4%
45-49	4	11	15	23.44%	11.9%
50-54	2	3	5	7.81%	10.3%
55-59	2	5	7	10.93%	8.2%
60-64	3	5	8	12.5%	5.3%
65+	1	3	4	6.25%	2.6%
TOTAL	19	48	67	100%	100%

* Source: Australian Bureau of Statistics Australian Demographic Statistics, 6291.0.55.001 Labour Force Status (ST LM8) by sex, age, state, marital status – employed – total from Feb 78. Supertable, South Australia at May 2009.

Workforce diversity: cultural and linguistic diversity

CULTURAL AND LINGUISTIC DIVERSITY					
	Male	Female	Total	% of Agency	SA Community*
Number of employees born overseas	4	5	9	14.06%	20.3%
Number of employees who speak Language(s) other than English at home	0	1	1	1.56%	16.6%

* Benchmarks from ABS Publication Basic Community Profile (SA) Cat No. 2001.0, 2006 census.

Workforce diversity: Disability

NUMBER OF EMPLOYEES WITH DISABILITIES (ACCORDING TO COMMONWEALTH DDA DEFINITION)			
Male	Female	Total	% of Agency
0	0	0	0%

TYPES OF EMPLOYEE DISABILITIES				
Disability	Male	Female	Total	% of Agency
Physical				0
Intellectual				0
Sensory				0
Psychological/Psychiatric				0
Other				0
Total	0	0	0	0
				<i>[This amount will not sum to 100%]</i>

NUMBER OF EMPLOYEES WITH DISABILITIES REQUIRING WORKPLACE ADAPTATION			
Male	Female	Total	% of Agency
0	0	0	0%

Performance development**Documented Review of Individual Performance Management**

Employees with ...	% Total Workforce
A review within the past 12 months	100%
A review older than 12 months	0%
No review	0%

*Note: Casual employees

Leadership and management training expenditure

Training and Development	Total Cost \$	% of Total Salary Expenditure
Total training and development expenditure	\$24 283	0.8%
Total leadership and management development expenditure	0	0%

Accredited training packages by classification

Classification	Number of Accredited Training Packages
Nil	Nil

Equal employment opportunity programs

The History Trust continued to monitor adherence to Government's Equal Employment Opportunity requirements through monthly staff and management meetings. Adherence to the History Trust's policies, Equal Opportunity Policy and Prevention of Workplace Harassment were monitored and training provided where required, particularly for the museums' volunteers. In addition, all museums considered aspects of cultural diversity in its broadest sense and access when devising annual exhibition programs. (Refer Appendix 13 for detailed listing of programs).

Occupational Health, Safety and Injury Management

During 2008–09 the History Trust continued to make significant and sustained achievements in the management of Occupational Health, Safety and Welfare.

Key achievements and actions for 2008–09 included:

- OHS&W committees operational in all divisions.
- Ongoing training for employees and managers in OHS&W responsibilities including:
 - Disability Awareness Training
 - First Aid Training
 - Manual Handling Training to existing staff and new employees
 - Asthma Management Training
 - Ergonomic Assessment Training
 - Fire Warden Training
 - Chemicals in the Workplace
- Regular audits and inspections were conducted in all works areas in line with the Department Premier and Cabinet 2008–09 schedules.
- Some staff received influenza immunisation.

Table 1 OHS Notices and Corrective Action taken

	2008–09
Number of notifiable occurrences pursuant to OHS&W Regulations Division 6.6	0
Number of notifiable injuries pursuant to OHS&W Regulations Division 6.6	0
Number of notices served pursuant to OHS&W Act s35, s39 and s40 (default, improvement and prohibition notices)	0

There were no OHS&W Notices or Corrective Actions taken in 2008–09.

Table 2: Agency gross¹ workers compensation expenditure for 2008–09 compared with 2007–08²

EXPENDITURE	2008–09 (\$m)	2007–08 (\$m)	Variation (\$m)	% Change + (–)
Income Maintenance	0	0	0	0
Lump Sum Settlements Redemptions – Sect. 42	0	0	0	0
Lump Sum Settlements Permanent Disability – Sect. 43	0	0	0	0
Medical/Hospital Costs Combined	10 832	1 338	+9 494	+87.65%
Other	324	0	+324	+100.00%
Total Claims Expenditure	11 156	1 338	9 818	88.00%

There was one new claim in 2008–09.

Table 3 Meeting Safety Performance Targets³

	Base: 2005–06 Numbers or %	Performance: 12 months to end of June 2009			Final Target Numbers or %
		Actual	Notional Quarterly Target**	Variation	
1. Workplace facilities	0	0	0	0	0
2. New Workplace Injury Claims	1	1	1	0	1
3. New Workplace Injury Claims Frequency Rate	13	13	11.65	1.35	20% or more reduction by 2009–10
4. Lost Time Injury Frequency Rate ***	13	13	11.65	1.35	20% or more reduction by 2009–10
5. New Psychological Injury Claims	0	0	0	0	20% or more reduction by 2009–10
6. Rehabilitation and Return to Work:					
6a. Early Assessment within 2 days:	0%	0%	80%	–80%	80% or more
6b. Early Intervention within 5 days	0%	100%	80%	20%	80% or more
6c. RTW within 5 business days	100%	0%	75%	–75%	75% or more
7. Claim Determination:					
7a. Claims determined in 10 business days	100%	100%	75%	25%	75% or more
7b. Claims still to be determined after 3 months	0%	0%	0%	0%	3% or less
8. Income Maintenance Payments for Recent Injuries:					
2007–08 Injuries (at 24 months development)		\$1 338	\$288	–\$1 110	Below previous 2 year average
2008–09 Injuries (at 12 months development)		\$13 205	\$328	–\$12 877	Below previous 2 year average
*Except for Target 8, which is YTD. For Target 5, 6c, 7a and 7b, performance is measured up to the previous quarter to allow reporting lag.					
**Based on cumulative reduction from base at a constant quarterly figure					
***Lost Time Injury Frequency Rate Injury frequency rate for new lost-time injury/disease for each one million hours worked. This frequency rate is calculated for benchmarking and is used by the WorkCover Corporation.					
Formula for Lost Time Injury frequency rate (new claims):					
$\frac{\text{Number of new cases of lost-time injury/disease for year} \times 1,000,000}{\text{Number of hours worked in the year}}$					

1 before 3rd party recovery

2 Information available from IDEAS RS/SIMS (for detailed advice on data extraction contact PSWD)

3 Information available from IDEAS RS/SIMS (SIPS target report)

Note: Workcover claims, Rehabilitation and Return to Work programs for History Trust staff are managed by DPC on behalf of the History Trust of South Australia.

FINANCIAL REPORTING

Financial performance

A grant of \$4 060 000 was made to the History Trust to fund some of its operations for 2008–09. The sum included \$185 000 in specific purpose funding for the Community Museums Program and South Australian History Fund, both of which are grant funds administered by the Trust. It also included \$1 321 000 for accommodation costs, including building maintenance and operating leases, \$76 000 for insurance and \$112 000 for Department of Premier and Cabinet business service charges. The financial outcome for the year was as projected with a net increase in cash of \$175 000 which was from grants and sponsorships.

Annual financial statements

Refer to Appendix 14 for the History Trust's Annual Financial Statements.

Contractual arrangements

There have been no contractual arrangements.

Account payment performance

In accordance with Treasurer's Instruction 11.

Particulars	Number of accounts paid	% of Total accounts paid (by number)	Value in \$A of accounts paid	% \$ of Total accounts paid (by value)
Paid by due date*	2 624	90.1%	\$2 163 990.06	84.0%
Paid late but paid within 30 days of due date	223	7.7%	\$294 782.79	11.5%
Paid more than 30 days from due date	63	2.2%	\$115 730.04	4.5%
TOTAL ACCOUNTS PAID	2 910	100%	\$2 574 502.89	100%

*The due date is defined as per 11.7 of Treasurer's Instruction 11 *Payment of Creditors' Accounts*. Generally, unless there is a discount or written agreement between the public authority and the creditor, payment should be within 30 days of the date of the invoice or claim. Some agencies receive invoices significantly later than the invoice date, due to supplier invoicing processes. Agencies may choose to report against the date the invoice is first received rather than the date of invoice.

Fraud

The History Trust has disclosed to the Auditor-General the results of the Trust's assessment of the risk that the financial report may be materially misstated as a result of fraud. The result of the Trust's assessment indicates that the financial statements would not be materially misstated. The History Trust has disclosed to the Auditor-General all known actual or possible non-compliance with laws and regulations, the effects of which have been considered when preparing the financial report.

Consultants

No consultants were engaged by the History Trust of South Australia during the year.

Overseas travel

There was nil overseas travel for the 2008–09 financial year.

Reporting against the Carers Recognition Act

The History Trust does not provide or fund direct services to carers.

Disability action plans

The History Trust follows the Disability Action Plan developed by Arts SA to ensure the delivery of the five outcomes listed below, within the constraints of our heritage buildings.

1. Ensure the accessibility of services to people with disabilities.
2. Ensure information about services and programs is inclusive of people with disabilities.
3. Deliver advice and services to people with disabilities with awareness and understanding of issues affecting people with disabilities.
4. Provide opportunities for consultation with people with disabilities in decision-making processes regarding service delivery and in the implementation of complaints and grievance mechanisms.
5. The Chief Executive will ensure that the History Trust has met the requirements of the *Disability Discrimination Act 1992* and the *Equal Opportunity Act 1984*.

During the year action was initiated to improve disability awareness to heritage buildings at the Migration Museum.

Urban design charter

Not applicable.

Asbestos management in government buildings

Government has adopted guidelines for asbestos management in government buildings. The History Trust of South Australia reports on its asbestos risk reduction program. This list includes buildings and vessels.

Annual asbestos management report 2008–09

Categories	Number of sites		Category description	Interpretation One or more items at these sites....
	At start of year	At end of year		
1	2	0	Remove	Should be removed promptly
2	0	2	Remove as soon as practicable	Should be scheduled for removal at a practicable time.
3	2	1	Use care during maintenance	May need removal during maintenance works.
4	1	1	Monitor condition	Has asbestos present. Inspect according to legislation and policy
5	4	0	No asbestos identified / identified asbestos has been removed	(All asbestos identified as per OHS&W 4.2.10(1) has been removed)
6	0	6	Further information required	(These sites not yet categorised)

Definitions

Category: The site performance score, determined by the lowest item performance score at each site.

Number of sites in category: A count of how many sites have the corresponding site performance score, with separate counts done at the start and the end of each year.

Category description: Indicates the recommended action corresponding to the lowest item performance score (recorded in the asbestos register by a competent person, as per OHS&W Regulation (SA) 1995, 4.2.10)

Interpretation: A brief real-world example of what each category implies for a site.

Freedom of Information – information statements

The Freedom of Information Act 1991 gives members of the public a legally enforceable right of access (subject to certain restrictions) to documents within the possession of South Australian government agencies, local government authorities and South Australian universities. The purpose of the Freedom of Information Act is to make the business of government open and accountable to the public. The History Trust of South Australia fully supports the objectives and spirit of the Act and is active in its endeavours to improve records management practices.

Energy efficiency action plan reports

The History Trust maintains its commitment to energy efficiency by means of an ongoing program, supported by all Trust staff, in seeking and implementing a wide range of general house-keeping initiatives to minimise energy usage. This consideration is also incorporated in the Trust's approach to exhibition design and gallery development.

Performance against annual energy use targets

	Energy Use (GJ) ¹	GHG Emissions ²	Business Measures ⁶
Base Year 2000–01 ³ :	3428	1129	\$117 000
Year Being Reported: 2008–09	2699	622	\$117 274
Portfolio Target⁴ (for Year Being Reported) 15%	2914	960	\$99 450
Final Portfolio Target⁵ (for 2014) 25%	2571	847	\$87 750

- 1 Energy use data will be expressed in gigajoules (GJ) and will be the sum of all fuel types used in each agency (ie electricity, natural gas, bottled gas, etc) for that period. This data will have been collected at a site level and aggregated up to agency level by the portfolio Reference Group member.
- 2 Many portfolios are pursuing a 'triple bottom line' reporting approach. It is therefore an optional extra that portfolios may wish to include Greenhouse Gas Emissions (in CO₂) as a means of quantifying a significant aspect of environmental performance. Greenhouse gas coefficients differ for fuel types. Please contact Energy Division, Department for Transport, Energy and Infrastructure to obtain these coefficients for South Australia.
- 3 It is acknowledged that portfolio structures change over time. Therefore the Portfolio baseline will represent the structure of the portfolio in the given reporting period.
- 4 The Portfolio target for the current year is based on an agreed methodology and can be obtained through the portfolio Reference Group member.
- 5 The Portfolio target in 2014 should equal a 25% energy efficiency improvement from the base year 2000–01.
- 6 Business measures are also known as normalisation factors. A key performance indicator for energy efficiency is energy intensity, ie the energy consumed per unit of a given business measure. Some typical business measures are the number of employees (FTEs) and the square metres of floor area of a building. The energy intensity therefore becomes the energy used per unit defined by the business measures such as MJ/m² and MJ/FTE.

Greening of Government Operations (GoGo) framework

The History Trust of South Australia developed a Sustainability and Greenhouse Gas Reduction Action Plan during 2008–09 and will continue to monitor progress and outcomes in 2009–10. In addition, the Trust maintains its commitment to energy efficiency, supported by all History Trust staff, in seeking and implementing a wide range of general housekeeping initiatives to minimise energy usage.

Regional impact assessment statements

No Regional Impact Assessment Statements were prepared or required.

Freedom of Information – statistical reporting

The Trust received one Freedom of Information request in 2008–09 via Department of the Premier and Cabinet, which received the application.

Reconciliation statement

The History Trust continued to implement its 2009–12 Business Plan, which included a range of initiatives relevant to Reconciliation:

- The History Trust acknowledges the Kaurna People as the Indigenous owners and custodians of the Adelaide Plains at the entrance to the Exhibition Gallery, Torrens Parade Ground.
- **The Migration Museum's refurbished galleries have a strong Indigenous history theme.**
- The Migration Museum continued to offer *Impact of Settlement*, their cultural awareness–historical program, to a range of government agencies and schools. This program is now in strong demand from agencies, both within the South Australian public sector and externally, to increase understanding of Indigenous history in the State.
- The Trust continued to work with all registered and accredited museums in the state to include recognition of Aboriginal land as a component of registration. The Trust also continued to encourage community museums to work collaboratively with local Indigenous communities.
- The Trust also asks all museums registered under the Museums Accreditation and Grants Program to acknowledge the Indigenous owners and custodians of the land their museums and communities are sited on.
- The travelling displays, which toured regional South Australia presented aspects of Indigenous history. The displays were *The Voice of the People: Democracy Comes to South Australia*, and *Blue Jeans and Jungle Greens: Revisiting the 60s and 70s*.
- **The History Trust's exhibition *Blue Jeans and Jungle Greens: revisiting the 60s and 70s*, and the travelling version, which was developed to tour regional South Australia, both include information on the struggle for Indigenous rights in South Australia and the 1967 referendum, as well as the perspectives of Indigenous veterans of the Vietnam War.**
- The exhibition *Children of the Empire* (developed in partnership with Tandanya and the South Australian Museum) was a photographic exhibition about life in the 1950s at Point Pearce Aboriginal Settlement.
- The travelling display developed in the previous year, *Vote Yes: the 1967 Referendum*, toured to Mannum Dock Museum.
- The State History Conference *Changing Places: Changing Lives* held in Adelaide in August 2008 included papers on South Australian Indigenous history.
- **SA History Week 2009** also included an increased number of activities relating to Indigenous histories.
- Reconciliation South Australia participated in **SA History Week 2009**. The event they listed was the launch of Reconciliation week at Elder Park held during June 2008.
- ***The River – Life on the Murray Darling***, the touring exhibition, explored the social history of the Murray River, including the experiences and views of Indigenous people living beside the River.

Gender reporting

The History Trust has a long-term commitment to considering the gendered nature of history in planning exhibitions, publications and other public programs. Individual research projects also include a gendered perspective.

DONNA TIMS AND REBECCA RUDZINSKI
Business Managers

History Trust of South Australia — Torrens Parade Ground, Victoria Drive, Adelaide 5000

GPO Box 1836, Adelaide 5001

Telephone: + 61 8 8203 9888

Fax: +61 8 8203 9883

Website: www.history.sa.gov.au

Email: staff@history.sa.gov.au

(Page left blank intentionally)

TWENTY NINTH ANNUAL REPORT

OF THE

HISTORY TRUST
of
SOUTH AUSTRALIA

FOR THE

YEAR ENDED 30 JUNE 2009

APPENDICES

1. Board of Trustees

Phillip Broderick, LL.B (*Chair*)

Christine Elstob, LLB (from September 2007)

Alison Mackinnon, AM, PhD, MEd, DipEd (Advanced) DipEd, BA

Susan Magarey, AM, BA (Hons), MA, PhD, FASSA

Bryan Moulds, BA (Planning), CTech

Minerva Nasser-Eddine, BA (Hons), MA, PhD, GDipBusEnt

Philip Satchell, AM

Ian Short, BA (Hons)

2. Management Personnel

Margaret Anderson, BA (Hons), MA, DipEd

Kym Cheek, BA Comm

Christine Finnimore, BA

Kym Hulme

Amanda James, BA, Grad Dip Mus Stud

Kevin Jones, BA (Hons), Grad Dip Mus Stud

Mandy Paul, BA (Hons), MA, Grad Dip Mus Stud

Rebecca Rudzinski

Vivienne Szekeres, BA (Hons), BEd

Donna Tims

Kate Walsh, BA (Hons), DipEd

Chief Executive

Manager, Marketing

Director, Migration Museum

Manager, National Motor Museum

Senior Community History Officer

Director, South Australian Maritime Museum

Senior Curator

Manager, Business Unit

Director, Migration Museum (retired October 2008)

Manager, Business Unit

Manager, Community History Unit (retired
December 2008)

3. Staff as at 30 June 2009

Directorate

Margaret Anderson, Chief Executive
Rebecca Baker, IT/Finance Officer
Suzanne Ball, Administrative Officer
Kym Cheek, Marketing Manager
Linda Curran, Administrative Officer
Kearin Hausler, Marketing Officer

Anna Ragosa, Chief Executive's PA
Cherie Saunders
Rebecca Rudzinski, Business Manager
Joylyne Teh, Human Resources Officer
Donna Tims, Business Manager

Community History Programs

Lynn Drew, Information Resources Manager
Karen George, Community History Officer
Amanda James, Senior Community History Officer

Jill MacKenzie, Public Programs Officer
Jan Mudge, Curator Collections
Mandy Paul, Senior Curator

Migration Museum

Christine Finnimore, Director
Jessamy Bengier, Operations Manager
Marg Degotardi, Designer
Elizabeth Galatsanos, Guide
*Rosa Garcia, Education Officer
Pamela Graham, Operations Manager
Heather Hayden, Casual Guide
Fiona Lukac, Casual Guide

Catherine Manning, Curator
Lata Mayer, Guide
Sue Milln, Guide
Suzanne Redman, Administrative Officer
Deidre Robb, Guide
Ron Rogers, Casual Guide
Lauren Simeoni, Guide
Pat Stretton, Guide

* Seconded from the Open Access College of the Department of Education and Children's Services (DECS)

National Motor Museum

Kym Hulme, Director
Janet Alexander, Museum Officer
Andrew Applebee, Museum Officer
Caroline Barnett, Museum Officer
Bruno Davids, Administrative Officer
Kathy Edelbauer, Facilities Officer
Steve Farrer, Museum Officer
Immanuel Hansen, Curatorial Officer-Mechanic

Ian Hay, Coachbuilder
Brett Knuckey, Museum Officer
Sue Kuschert, Museum Officer
Matthew Lombard, Curator
Allison Russell, Senior Curator
Pauline Renner, Events Coordinator
Kerry Smart, Museum Officer
Sue Wheeler, Business Manager

South Australian Maritime Museum

Kevin Jones, Director
Tineke Adolphus, Museum Officer, Casual
Rolf Christiansen, Museum Officer
Kristy Dermody, Curator
*Mandi Dimitriadis, Education Officer
Venetia Gillot, Museum Officer
Matt Gurn, Fleet Manager & Volunteer Coordinator
Georgia Health, Museum Officer, Casual
Jeff Hill, Museum Officer, Casual

Eddy Knight, Museum Officer
Judy Laidler, Museum Officer
Lindl Lawton, Senior Curator
Rob Lincoln, Museum Officer
Patricia Mathieson, Administrative Officer
Joan Simpson, Operations Manager
Anne Sinclair, Museum Officer, Casual
Asa Wassberg, Administrative Officer

* Seconded from the Open Access College of the Department of Education, Training and Employment (DETE)

4. Honorary Consultants/Valuers

Rail Heritage Collections Mr Frank McDonnell (Directorate)

5. Migration Museum Foundation Committee Members

Chair	Mr Alec Khoo
Treasurer	Mr Alex Gardini
Secretary	Jessamy Benger
Members	Mr Randolph Alwis
	Mr Charlie Borg
	Dr R Dante G Juanta OAM JP
	Prof Judith Brine
	Ms Minerva Nasser–Eddine
	The Hon Julian Stefani, OAM MLC
	Ms Andrea Stylianou
	Ms Viv Szekeres
	Ms Constanze Voelkel–Hutchison

6. Volunteer Services

The History Trust is extremely grateful for the services of a large number of volunteers. We could not manage our museums, special events and collections without them and thank them most sincerely for their continuing work on our behalf. The volunteers contributed an estimated 24 640 hours to the History Trust in 2008–09.

Directorate/Community History Unit

Karen Blackwood
Mike Brown

John Davis
Alexis Tindall

Migration Museum

Mr Paul Beresford
Mr Rick Coburn
Ms Val Darby
Ms Pamela Griffiths
Mr Tony Harris

Ms Birgit Heilmann
Mrs Beth Jeffries
Ms Jenna Randall
Ms Kathryn Reardon
Ms Lesley Reardon

Mr Dave Rickard
Mrs Pauline Rickard
Ms Erica Smith
Ms Sophie Thomas

Ms Meryl Thompson
Ms Carol Welcome
Ms Beatriz M Wood
Mr Adam Zaknic

National Motor Museum

Brian Barber
Russell Barner
Maxine Bartlett
Glen Bartlett
Geoff Beatty
Dennis Basson
Valerie Beatty
Chris Bennett
Alan Boman
Joan Charrison
Ray Charrison
Arthur Clisby
Nola Clisby
Geoff Coat
Lindsay Cremin
Lynton Denton
Janet Egan

Colin Emmett
Chris Engelson
Roy Feather
Peter Flaherty
Terry Franklin
Bill Gallagher
Francis Georg
Thomas Georg
Geoffrey Glynn–Roe
Darryl Grey
Suz Heifer
Ross Hoare
Danny Kay
Donald Kay
Bob Keynes
Colin Laity
Ron Lindsay

Hans Looft
Maureen Looft
David Manson
Carolyn Mason
Lindsay Mason
Malcolm McDowell
Scott McDowell
Ali McKenna
Phil Menzies
Gordon Miller
Kevin Osborne
Des Pudney
Carol Pudney
Dave Richardson
Raelene Richter
Richard Sage
John Schwartz

Jenny Simmons
Barry Spence
Alan Steel
Judy Steel
Peter Stopford
Cheryl Stuart
Ivan Sutton
John Thomas
Jim Thompson
Shirley Tonkin
Graham Tonkin
Abbey Van Manen
John Van Manen
Mal Wade
Wolfgang Warmer
Bill Watson
Joy Watson
Rich Whitehead

South Australian Maritime Museum

John Aspinall
Yensie Barnes
Ron Barnes
Derek Berry
Bob Cole
Christopher Colyer
Tony Crosse
Veronique Crowther
Richard Crowther
Par Dahalander
Colin Dallow
Henry Doherty

Ernie Edwards
Errol Ford
Noel Garrard
Harry Goodall
Dennis Greenhill
John Gresty
Mark Howard
Dave Jenkins
Mike Keen
John Lawrence
Vern Leng

Andrew Mangnoson
Robyn Matthews
Eric Millard
Carol Mitchell
Kevin Morris
Rex Munn
Mike Parsons
Jan Perry
Barry Poland
Dave Rickard
Keith Ridgeway

Bill Ridley
Peter Roberts
Fred Smith
Peter Smith
Phil Stewart
Hank Vandewater
Peter Walls
Robert Warren
Jack Whitcomb
Harold Whittle
Robert Wright

7. Key Performance Indicators 2008–2009

	2005—06	2006—07	2007—08	2008—09
Access by the South Australian community to the state's cultural heritage				
Visitor numbers for Trust Museums (total)	305 804	306 257	329 785	323 793
travelling exhibitions (outward) visitor numbers (total)	5 348	112 254	254 247	41 758
School numbers (total)	39 801	40 866	44 562	41 832
Travelling exhibitions – outward	3	8	6	8
Number of community organisations assisted	455	355	230	269
Number of enquiries	14 266	12 607	10 565	10 179
Financial performance				
Revenue generated				
admissions	\$581 802	\$587 954	\$636 417	\$660 251
functions/facilities hire	\$64 192	\$58 112	\$60 079	\$73 105
book/gift shops	\$190 855	\$194 938	\$213 984	\$240 286
grants	\$119 000	\$99 909	\$70 750	\$171 360
donations	\$50 496	\$22 283	\$21 890	\$16 955
sponsorship ✧ cash	\$434 900	\$238 412	\$187 100	\$234 350
other income	\$220 447	\$273 021	\$361 984	\$274 741
Number of volunteers on books at 30 June	125	138	137	136
and the estimated person hours contributed for the year	13 992	15 843	15 144	24 640

8. Grants/Sponsorship Obtained

Directorate/Community History Programs

\$66 360 Minister for Veteran Affairs for the travelling of *-Badcoe VC Regional Tour*

For SA History Week 2009

\$20 000 Department for Environment and Heritage
 \$12 000 Department of the Premier and Cabinet Development Fund
 \$13 000 Adelaide City Council
 \$10,000 The University of Adelaide

For State History Conference (to be held 31 July – 2 August 2009)

\$ 2 000 State Records of South Australia
 \$ 3 000 Department for Environment and Heritage, Heritage Branch
 \$ 1,000 Historical Society of SA
 \$ 500 History Council of South Australia
 \$ 250 Museums Australia SA Branch

For South Australian History Fund

\$ 1 000 Australian Society of Archivists (SA)

National Motor Museum

\$50 000 Holden sponsorship
 \$50 000 Motor Accident Commissions sponsorship for an Inactive exhibition: *"Road Ready"*.

Rock & Roll Rendezvous event

\$10 000 Eastsider Performance
 \$ 3 000 Natrad
 \$ 600 Welsh and Leo

South Australian Maritime Museum

\$17 500 Flinders Port contribution toward producing the education program *-Move It Move It*.
 \$10 000 South Australian Maritime Museum Friends History Fund contribution towards producing the exhibition *-Pirates*
 \$20 000 AGL contribution towards maintenance of *-Archie*

Quest for the South Magnetic Pole exhibition

\$70 000 Visions of Australia
 \$10 000 University of Adelaide
 \$15 000 SA Museum

9. Publications

- Walsh, K and James, A *MAGP News*. Three issues. For distribution to museums registered and accredited in the Museums Accreditation and Grants Program
- James, A and George, K *CMP News*. Three issues. For distribution to museums registered and accredited in the Museums Accreditation and Grants Program
- Finnimore, C *Migration Museum*, Migration Museum 2008
- Geyer, M *Behind the Wall: The Women of the Destitute Asylum, Adelaide, 1852–1918*, re-printed in association with Wakefield Press, 2008
- National Motor Museum *Off the beaten track: a journey across the nation*. Exhibition catalogue, National Motor Museum.

10. Unpublished Conference Papers

- Dermody, K '1840s Sea Voyages: the Journey to South Australia'. Lecture at Ayers House Museum, National Trust of South Australia. 11 August 2008
- Dimitriadis, M 'Treasures of the Sea Audio Trail'. Museums Australia Conference: *Learning Opportunities and Museums*. Melbourne 15–17 September 2008
- Finnimore, C 'Backyard Frontiers: Nono Zotti's winepress and other immigrant journeys'. 17th State History Conference *Changing Places: Changing Lives*. August 2008. Sunnybrae Function Centre, Enfield
- Garcia, R 'Global Perspectives, Local Relevance'. World Education Forum. March 2009. Korea.
- Manning, C 'Hope: Finding a Voice for Young People in Museums'. 17th State History Conference *Changing Places: Changing Lives*. August 2008. Sunnybrae Function Centre, Enfield
- Manning, C 'Get your own history: Community Access at the Migration Museum'. Museums Australia Conference May 2009. Newcastle, Australia
- Paul, M 'Pink Shorts in Parliament' Australian Historical Association Conference, Melbourne, July 2008
- Szekeres, V 'When too many truncheons are never enough'. *Interpretation Australia Conference*. Adelaide October 2008

11. Museums Accreditation and Grants Program

The following 60 museums are currently registered or accredited in the Program.

Accredited museums as at 30 June 2009

Australian Electric Transport Museum, St Kilda (Tramway Museum)
 Ayers House Museum, Adelaide
Embroiderers' Guild Museum, Mile End
 Melrose Courthouse Museum
 Millicent National Trust Museum
The Sheep's Back Museum, Naracoorte National Trust
 South Australian Aviation Museum, Port Adelaide
 Unley Museum
 Urrbrae House Historic Precinct

Registered museums as at 30 June 2009

Adelaide Masonic Centre Museum	Moonta Mines Museum
Ardrossan National Trust Museum	Mount Gambier Branch National Trust
Army Museum of South Australia, Keswick	Mount Laura Homestead Museum, Whyalla
Axel Stenross Maritime Museum, Port Lincoln	National Railway Museum
Barmera National Trust Museum, Cobdogla	Norwood History Centre
Barossa Valley Archives and Historical Trust Museum, Tanunda	Old Highercombe Hotel Folk Museum, Tea Tree Gully
Boomerang Steam and Traction Preservation Society	Beachport and District Branch National Trust, Old Wool and Grain Store Museum
Brinkworth History Group	Penneshaw Maritime and Folk Museum
Burra Burra Branch National Trust	Polish Hill River Church Museum, Sevenhill
Charles Sturt Memorial Museum Trust, Grange	Port MacDonnell Maritime Museum
Crystal Brook Heritage Centre	Port Pirie National Trust Museum
Eyre Peninsula Railway Preservation Society, Port Lincoln	Port Victoria Maritime Museum
Farm Shed Museum, Kadina National Trust	Prospect Hill Historical Museum
Friedensberg Historic German School Museum, Springton	Radium Hill Heritage Museum
Gawler National Trust Museum	Scholz Park Museum, Riverton
Goolwa National Trust Museum	South Australian Police Historical Society Inc, Thebarton
Kimba and Gawler Ranges Historical Society	Stansbury Museum
Koppio Smithy Museum	Strathalbyn National Trust Museum
Lameroo and District Historical Society	Swan Reach Museum
Latvian Museum, Wayville	The Hahndorf Academy
Lock and Districts Heritage Museum	Walleroo Heritage and Nautical Museum
Loxton Historical Village	Whyalla Maritime Museum
Mallala and Districts Historical Society	Willunga Courthouse Museum
Mallee Tourist and Heritage Centre, Pinnaroo	Victor Harbor Branch, National Trust of South Australia
Mannum Dock Museum	Yankalilla District Historical Museum
Mary MacKillop Penola Centre	

11. Museums Accreditation and Grants Program (cont.)

Allocation of grants

Museums need to be accredited or registered with the History Trust to be eligible for Museums Accreditation and Grants Program funding.

The MAGP fund is \$150 000 per annum. There was \$145 000 available for distribution in the grant round this year, as \$5 000 was reserved as the special accreditation grant to Urrbrae House Historic Precinct (accredited in December 2007).

Applications closed on 29 August 2008. The Trust received 35 applications from 33 museums. Total funding requested was \$201 975. The assessment committee comprised Margaret Anderson, Chief Executive History Trust, Kate Walsh, Manager, Community History Unit, Amanda James, Community History Officer, Ann Herraman, Mount Lofty and District Historical Society, and Kathy Gargett, State Records. Graham Hancock, National Trust of SA, also reviewed applications from National Trust branches.

Museum	Project	Grant
Adelaide Masonic Centre Museum	Conservation treatment of ship model 'City of Adelaide'	\$250
Australian Electric Transport Museum	Engage professional assistance to guide collection cataloguing program	\$1,000
Axel Stenross Maritime Museum	Purchase computer equipment, photocopier, vacuum cleaner and display case materials for use in ongoing collections management activities	\$4,000
Ayers House Museum	Redevelop current nursery display into a thematic-based exhibition focusing on Victorian childhood	\$18,000
Charles Sturt Memorial Museum Trust	Conservation of two artworks	\$250
Charles Sturt Memorial Museum Trust	Develop two interpretive panels about Sturt's expeditions 1838-39	\$1,570
Crystal Brook Heritage Centre	Purchase computer and digital camera for use in collections management activities	\$1,920
Embroiderers' Guild Museum	Complete photographing the collection	\$1,500
Eyre Peninsula Railway Preservation Society	Develop a display about the work of railway shunt horses 1906 to 1952	\$1,380
Kimba & Gawler Ranges Historical Society	Upgrade computer equipment and software used for collections management activities	\$2,250
Koppio Smithy National Trust Museum	Copy photographs and documents for storage and display	\$450
Mallee Tourist & Heritage Centre	Develop audio-visual units for the printing section of the museum	\$13,000
Mary MacKillop Penola Centre	Develop stage 2 of the exhibition 'Josephite Education - These are the Children I Love'	\$15,000
Melrose Districts History Society	Purchase archival storage materials and construct shelving covers	\$2,300
Millicent National Trust Living History Museum	Engage a consultant to review the museum's operations, including interpretation and collections management	\$4,500
Mount Gambier National Trust	Purchase equipment and transfer collection records to a database	\$2,640
National Railway Museum	Engage a consultant to undertake a significance assessment of collections	\$4,000
Norwood History Centre	Develop the exhibition 'The Divine Power of History' within the Argent Uniting Chapel at Payneham Cemetery	\$10,000
Old Highercombe Hotel Museum	Purchase Collections Mosaic Plus software and migrate data from existing Access database	\$2,390
Penneshaw National Trust Museum	Implementation of design concept and interpretation plan stage 1 - development of new displays in the McKenzie Room	\$15,000
Port MacDonnell & District Maritime Museum	Develop and install interpretive signage for a self-drive touring route that tells the story of the wreck of the SS Admella	\$6,925
Radium Hill Heritage Museum	Develop four photographic display panels	\$1,800
Scholz Park Museum	Develop the exhibition 'Scholz Family - Their Stories Unveiled'	\$9,000
South Australian Aviation Museum	Develop interpretive display panels	\$5,900
South Australian Police Historical Society	Upgrade Mosaic database to the Server Edition	\$5,000
The Farm Shed Museum and Tourism Centre	Develop design concept for the exhibition 'Sowing the Crop'	\$5,200
The Sheep's Back Museum	Develop design concept plan for the final gallery in the wool museum section	\$4,000
Wallaroo Heritage & Nautical Museum	Purchase new computer equipment	\$1,775
Yankalilla District Historical Museum	Engage a consultant to prepare a report regarding future directions for the museum's collections and displays	\$4,000
Total		\$145,000

12. South Australian History Fund

The South Australian History Fund (SAHF) aims to meet a pressing need for financial assistance to individual authors and organisations to help research and publish works of non-fiction relating to South Australian history. **The fund also assists South Australia's history sector, which includes historical societies, museums and community organisations to undertake projects to preserve and present their community history.**

This year the Australian Society of Archivists again contributed \$1 000 to the SAHF, to be allocated on their behalf, to assist one or more applicants to improve the quality of storage provided for the historical records in their custody. In addition the Department for Environment and Heritage (DEH) contributed \$9 000, to be allocated on their behalf, to two or more heritage interpretation projects.

The total available for distribution in 2008–09 was \$45 000. The Trust received 64 applications totalling \$166 633. The assessment committee comprised Margaret Anderson, Chief Executive History Trust, Kate Walsh, Manager, Community History Unit, June Edwards, Collection Specialist, State Library of SA (ASA representative), and Peter Cahalan, Manager Interpretive Programs, South Australian Tourism Commission. Robyn Ashworth, Senior Heritage Interpretation Officer, Department for Environment and Heritage, also reviewed heritage project applications.

Organisation	Project Type	Project	Grant
Agricultural and Horticultural Archives Foundation of South Australia	Project	Make digital copies of oral history cassettes	\$1,000
American River Progress Association (Recipient of DEH funding)	Project	Develop a walking/driving trail through the settlement of American River	\$3,000
Anne Scrimgeour	Research	Conduct research into the establishment of Aboriginal schools in Adelaide	\$5,000
Cabra Dominican College Heritage Museum	Project	Install a display board and cabinet as part of the displays 'Cabra Dominican College – Celebrating 125 years of Dominican Education in 2011'	\$1,275
Cameron Raynes	Research	Conduct research for 'The Last Protector Vol. 2' looking at exclusion of Aboriginal access to public services in South Australia 1939 to 1953	\$4,000
City of Charles Sturt	Project	Develop an audio guide for the self-guided heritage walking trail of the suburb of Brompton	\$1,500
City of Onkaparinga	Project	Reformat oral history recordings from cassette tape to CDs	\$500
City of Port Lincoln	Project	Purchase computer, scanner and software and digitise photographs located within the local collection of the Port Lincoln Library	\$1,000
Coober Pedy Historical Society	Project	Purchase filing cabinets for archival storage of documents and photographs	\$775
Donald Johnson	Publication	Publish the book 'Parks for City People: London to Adelaide to Garden City'	\$2,000
Dublin History Group	Project	Scan, catalogue and store historical photographs and documents	\$400
Fowlers Bay Progress Association (Recipient of DEH funding)	Project	Develop an interpretive signage trail encompassing 20 town sites	\$2,000
Friends of the Botanic Gardens of Adelaide	Project	Undertake an oral history project 'Garden Memories – Celebrating 30 Years of Friends of the Botanic Gardens'	\$1,000
Historical Society of the Uniting Church in South Australia (Recipient of DEH funding)	Project	Purchase a plan cabinet and store large pictures and charts	\$500
Judith Elton	Research	Research and write a guide to records relating to South Australian labour history 1836 to 1994	\$5,000
Julie Collins	Research	Undertake the research project 'The Sunny South: cultural attitudes and architectural responses to the sun in South Australia in the modern period'	\$4,000
Murray Bridge Rowing Club (Recipient of DEH funding)	Project	Purchase archival materials as part of project to catalogue and archive the Club's historical collection	\$1,500
Patricia Sumerling	Research	Complete a biography of Albert Augustine Edwards	\$1,000
Peterborough History Group	Publication	Publish 'The Golden Gully Rainfall Record', a notebook kept by George Ferguson between 1927 and 1945	\$900
Port Neill Progress Association	Project	Digitise and print photographs to be used in a publication about 100 years of Port Neill	\$600
Raukkan Community Council (Recipient of DEH funding)	Project	Design and construct two interpretive panels and photographic flip books about the Raukkan church and community life	\$5,000
Sisters of St Joseph SA	Project	Conservation treatment of an 1881 sampler	\$700
The Pioneers Association of South Australia	Publication	Publish the booklet 'Ludlow House Gumeracha'	\$350
Tony Rogers and Australian Meteorological Association	Research	Research leading to a book about extremes of weather in South Australia and impacts on people since European settlement	\$2,000
Total			\$45,000

13. Exhibition Program

Community Access

<p>Migration Museum The Forum</p> <p>The Forum is available for community groups to mount exhibitions about their own history and experience.</p>	<p><i>Vision, Hope and Life: Greek Migration Stories.</i> OEEGA – The organisation of Helene and Hellene-Cypriot Women of Australia Inc. (SA) 15 February 2008 – 23 August 2008</p> <p><i>Cyprus Community of SA: 60 Years.</i> Cyprus Community of South Australia. 8 September – late November 2008</p> <p><i>Yesterday, Today and Tomorrow.</i> Filipino Australian Heritage Society Inc. 2 December 2008 – 28 March 2009</p> <p><i>We are the Bahai's: An exhibition on reaching Australia's shores.</i> Bahai's of Adelaide. 19 April – 28 May 2009</p> <p><i>Tanzanian Community Cultural Exhibition.</i> Tanzanian Community Association of South Australia (TCASA). 6 June – late August 2009</p>
<p>National Motor Museum Club Space I and II</p> <p>Museum initiative to give motoring clubs a forum to display club member vehicles and promote their club activities. The Museum has two Club spaces.</p>	<p>Triumph Sports Club. 12 October – 10 January 2009</p> <p>Austin 7 Club. 12 October – 10 January 2009</p> <p>HD-HR Holden Club. 11 January – 4 April 2009</p> <p>Sprite Club. 11 January – 4 April 2009</p> <p>Jowett Owners' Club. 5 April – 5 July 2009</p> <p>Classic Owners' Motorcycle Club. 5 April – 5 July 2009</p>

13. Exhibition Program

Partner/Collaborative Exhibitions and Events

History Trust of South Australia Partnership with the South Australian Museum Archives and Tandanya National Aboriginal Cultural Institute	<i>Children of the Empire</i> . An exhibition of photographs of Point Pearce Aboriginal Settlement in the 1950s. Called <i>Children of the Empire</i> , the exhibition was open for five weeks including <i>SA History Week</i> 2009 and <i>Reconciliation Week</i> , was well attended, and received positive feedback, particularly from members of relevant Indigenous communities. This was a temporary exhibition. 16 May – 21 June 2009
In conjunction with the Friends of the University of Adelaide Library.	<i>Seminar Series</i> Seminar Two: Professor Peter Edwards, 'In the tradition? Writing our official history of the Vietnam War'; Seminar Three: the Hon. Dr Lynn Arnold, 'Vocal Minority meets the Silent Majority: shifts in popular opinion and politics during the Vietnam War'; Seminar Four: Professor Susan Magarey, 'Women's Liberation and Dame Roma Mitchell.
Partnership with Department of Veterans' Affairs. Managed for the Minister of Veterans' Affairs	<i>Major Peter Badcoe's Victoria Cross and the Yandruwandha Burke and Wills breastplate</i> Regional Tour. The tour travelled to 17 regional towns between 21 March and 20 June 2009. Visited: Victor Harbor, Two Wells, Kingscote KI, Port Pirie, Port Augusta, Berri, Bordertown, Mt Gambier, Kingston SE, Tailem Bend, Bublacowie (nr Yorketown), Clare, Peterborough, Broken Hill NSW, Port Lincoln, Ceduna, Wudinna
South Australian Maritime Museum Partnership with South Australian Museum	<i>Quest for the South Magnetic Pole.</i> 8 May – 18 October 2009. A temporary exhibition.
Partnership with Little Big Book Club and Come Out Festival Partnership with the Whale and Dolphin Conservation Society Partnership with Flinders Ports and DP World Container Terminal	<i>Captain Crabclaw's Pirate Party.</i> 23–24 May 2009. <i>Dolphin Festival.</i> Schools event 15–19 June <i>Move It Move It!</i> Education program
Migration Museum Collaboration with the University of South Australia for the Adelaide Festival of Arts	<i>Hope: The Utopian Imagination of Young people on the Margins.</i> 29 February 2008 – 15 August 2008. A temporary exhibition.

13. Exhibition Program (cont.)

New Permanent Exhibitions

History Trust Exhibition Gallery	<i>An Adelaide Snapshot 1865: Townsend Duryea's Panorama.</i> Mobile display in the Drill Hall, Torrens Parade Ground. Ongoing.
National Motor Museum	<i>Model behaviour.</i> An exhibition designed for younger audiences.
South Australian Maritime Museum	<i>Wrecked! Tragedy and the Southern Seas.</i> From 18 October 2008 continuing.

Temporary Exhibitions — In-house

History Trust Exhibition Gallery	<i>Blue Jeans and Jungle Greens: Revisiting the 60s and 70s.</i> (Opened 19 February 2008)
Migration Museum	<i>Evidence of Survival: The Impact of World War Two in Documents.</i> 22 August 2008 – 30 March 2009 Sections of Gallery 4 were refurbished, completed March 2009
National Motor Museum	<i>Shades of Green.</i> September 2008 – ongoing. <i>Country Roads.</i> 16 June – 12 October 2008
South Australian Maritime Museum	<i>Captured on Canvas: John Giles' Port Adelaide 1930 to 1960.</i> 6 February – 24 April 2009 <i>Pirates! Skulduggery at the Maritime Museum.</i> 25 October 2008 – 26 January 2009

Touring Exhibitions — Incoming

Migration Museum	<i>Selling an American Dream: Australia's Greek Café.</i> 8 April 2009 – 29 September 2009 An exhibition of photographs exploring the key roles that Greek Australians played during the formative years of Australian culture. This touring exhibition was developed by the <i>In Their Own Image: Greek-Australians National Project</i> , Macquarie University. Curators Effy Alexakis and Leonard Janiszewski.
-------------------------	---

13. Exhibition Program (cont.)

Touring Exhibitions – Outgoing

History Trust of South Australia	<p><i>Gallipoli: The South Australian Story</i></p> <p>Visited: The Kingston National Trust. November 2008 Mallee Tourist & Heritage Centre at Pinaroo. 10 March – 13 April 2009</p> <p><i>Blue Jeans and Jungle Greens: Revisiting the 60s and 70s.</i></p> <p>Visited: Berri Library and Information Centre. 18 August – 15 September 2008 Waikerie Library. 16 September – 15 October 2008 Bublacowie Military Museum and Memorial. 17 October – 2 December 2008 Port Lincoln RSL. 14 January – 4 February 2009 Norwood Town Hall. 6 February to 17 February 2009 Mount Gambier Civic Centre. 19 ebruary – 10 March 2009 The Old Wool and Grain Store Museum Beachport. 13 March – 14 April 2009 Port Pirie RSL and Military Museum. 17 April – 14 May 2009 Keith National Trust. 19 May – 15 June 2009 Penneshaw National Trust. 19 June – 13 July 2009</p> <p><i>Vote Yes: the 1967 Referendum.</i></p> <p>Visited: Mannum Dock Museum. July 2008.</p>
Migration Museum	<p><i>They Took Our Land and then Our Children: 1923 Ngarrindjeri Petition</i></p> <p>The exhibition was jointly produced by the Migration Museum and the Ngarrindjeri Heritage Committee Inc with the support of several government departments.</p> <p>Visited: Underdale High School, 7–25 September 2008 Country Arts, City of Port Augusta, 1 October – 28 November 2008 Celtic Training, 1–12 December 2008 Nazareth Catholic College, 20 March – 9 May 2009 Kirtan Point Primary School, Port Lincoln, 8 May – 5 June 2009</p>
South Australian Maritime Museum	<p><i>The River – Life on the Murray Darling.</i> (Produced in collaboration with Australian National Maritime Museum)</p> <p>Visited: At Museum of the Riverina in Wagga Wagga from 7 June – 24 August 2008 Albury Library Museum from 6 September – 12 October 2008</p>

13. Exhibition Program (cont.)

Touring Exhibitions — Outgoing

National Motor Museum	<p><i>Off the beaten track: a journey across the nation.</i> 30 June 2008 – 21 August 2008. Departed from the History Trust of South Australia Directorate, Torrens Parade Ground, on Monday 30 June 2009.</p> <p>Visited: Kapunda, 1–2 July 2009 Burra, 3–4 July 2009 Peterborough, 5–6 July 2009 Orroroo, 7–8 July 2009 Hawker, 9–12 July 2009 Parachilna, 13–15 July 2009 Leigh Creek, 16–18 July 2009 Marree, 19–20 July 2009 Oodnadatta, 21–22 July 2009 Marla, 23 July 2009 Kulgera, 24 July 2009 Alice Springs, 25 July – 3 August 2009 Ti Tree, 4 August 2009 Barrow Creek, 5–6 August 2009 Wycliffe Well, 7–8 August 2009 Tennant Creek, 9–11 August 2009 Elliot, 12 August 2009 Daly Waters, 13–14 August 2009 Katherine, 15–17 August 2009 Adelaide River, 18–19 August 2009 Darwin, 20 August 2009</p> <p><i>Diamond Lion –touring exhibition built for Holden.</i> Touring through 2008</p> <p>This objectless touring exhibition was commissioned by Holden to commemorate the 60th anniversary of the first Holden motor car (in 1948). Incorporating texts and touch screen computers, the exhibition gave visitors a chance to explore the history behind the first Holden. The computers presented copies of original documents relating to the history of the 48–215 and also examples of early television advertising. This exhibition was funded and toured by Holden. This exhibiting was toured by Holden.</p>

13. Exhibition Program (cont.)

Events / Audience Development

History Trust	<p>SA History Week 2009. 22–31 May 2009</p> <p>Changing Places: Changing Lives, 17th annual State History Conference. 2–day conference. Sunnybrae Function Centre, Enfield, Adelaide. August 2008 Free conference</p>
Migration Museum	<p><u>Exhibition Launches</u></p> <p>Evidence of Survival: The Impact of World War Two in Documents, exhibition launch on 22 August 2008</p> <p>Selling an American Dream: Australia's Greek Café, exhibition launch on 8 April 2009</p> <p>Cyprus Community of SA: 60 Years, exhibition launch on 4 September 2008</p> <p>Yesterday, Today and Tomorrow, exhibition launch on 6 December 2008</p> <p>We are the Bahai's: An exhibition on reaching Australia's shores, exhibition launch on 19 April 2009</p> <p>Tanzanian Community Cultural Exhibition, launch on 6 June 2009</p> <p><u>Foundation Events</u></p> <p>Migration Museum Foundation Morning Tea. 9 September 2008, 9 December 2008 and on 12 May 2009</p> <p>The Migration Museum Foundation hosted a reception for members of the Council for International Trade South Australia (CITSA), 5 February 2009</p> <p><u>Other Events</u></p> <p>Australian Council of Bosnia–Herzegovina National Day. 7 July 2008</p> <p>Jason Chong, <i>Minority Retort</i> comedy show, 28–31 July 2008</p> <p>Migration Museum Book Launch, 19 September 2008</p> <p>Philosophers Café, <i>Is it possible to legislate for work/life balance?</i> 26 September 2008</p> <p>Farewell for Viv Szekeres. 14 November 2008</p> <p>Eric Richards' Destination Australia book launch. 26 November 2008</p> <p>Pontian Greek Community plaque ceremony. 20 December 2008.</p> <p>Mujahid Ahmed, <i>African Time</i> comedy show. 4–6 March 2009</p> <p>Themis Aranibar, Christian Cifuentes and Simon Palomares, <i>La Música del Ché,</i> 16–20 March 2009</p> <p>University of South Australia, <i>Poetry and Poetics Symposium.</i> 1–2 May 2009</p> <p>Come Out 09: Youth Arts Festival, <i>Who Do You Think You Are?</i> comedy show. 25–29 May</p>

13. Exhibition Program (cont.)

Events / Audience Development

National Motor Museum	<p>Bay to Birdwood Classic. 28 September 2008</p> <p>2009 Rock & Roll Rendezvous. 5 April 2009</p>
SA Maritime Museum	<p>Pirate School. 3 November – 12 December 2008</p> <p>Life Onboard. Come Out Festival Event, 18 – 29 May 2009</p> <p>Shipwrecked! Videoconferencing link up with Streaky Bay Area School. 24 June 2009</p> <p><u>School Holiday Programs</u></p> <p>Dolphin Festival. 7 July – 18 July 2008 and 14 April – 24 April 2009</p> <p>General public cruises Archie Badenoch. 7 July – 18 July 2008</p> <p>Shipwrecked. 29 September – 10 October 2008</p> <p>The Pirate Show. 5 January – 23 January 2009</p> <p>Vacation Care cruises Archie Badenoc. 5 January – 23 January 2009</p>

14. Financial Statement for the year ended 30 June 2009



Government of South Australia
Auditor-General's Department

Our Ref: A09/091

29 September 2009

Mr P Broderick
Chairperson
History Trust of South Australia
GPO Box 1836
ADELAIDE SA 5001

9th Floor
State Administration Centre
200 Victoria Square
Adelaide SA 5000
DX 56208
Victoria Square
Tel +618 8226 9640
Fax +618 8226 9688
ABN 53 327 061 410
audgensa@audit.sa.gov.au
www.audit.sa.gov.au

Dear Mr Broderick

Financial Statements 2008-09

The audit of the financial statements of the History Trust of South Australia for the year ended 30 June 2009 has been completed.

The audit covered the principal accounting functions, internal controls and processes including test verification of financial transactions processed and recorded during the year.

Specifically, the following areas were covered during 2008-09:

- Revenue
- Expenditure
- Payroll
- Financial accounting
- Fixed assets
- Collections
- Financial management compliance
- Corporate governance.

The results of the interim audit were communicated to the Chief Executive in a letter dated 26 June 2009. A satisfactory response to the letter and issues raised has been received.

The Financial Statements of the History Trust of South Australia are returned together with my Independent Auditor's Report.

I would like to take this opportunity to express my appreciation to your staff for their cooperation during the course of the audit.

Yours sincerely

S O'Neill
AUDITOR-GENERAL

Enc.

INDEPENDENT AUDITOR'S REPORT**Government of South Australia**

Auditor-General's Department

9th Floor
 State Administration Centre
 200 Victoria Square
 Adelaide SA 5000
 DX 56208
 Victoria Square
 Tel +618 8226 9640
 Fax +618 8226 9688
 ABN 53 327 061 410
 audgensa@audit.sa.gov.au
 www.audit.sa.gov.au

**To the Members
 History Trust of South Australia**

As required by section 31 of the *Public Finance and Audit Act 1987* and subsection 19(2) of the *History Trust of South Australia Act 1981*, I have audited the accompanying financial statements of the History Trust of South Australia for the financial year ended 30 June 2009. The financial statements comprise:

- A Statement of Comprehensive Income
- A Statement of Financial Position
- A Statement of Changes in Equity
- A Statement of Cash Flows
- Notes to the financial statements
- A Certificate from the Chairperson, Chief Executive and Business Manager.

The Responsibility of the Members for the Financial Statements

The members of the History Trust of South Australia are responsible for the preparation and the fair presentation of the financial statements in accordance with the Treasurer's Instructions promulgated under the provisions of the *Public Finance and Audit Act 1987* and Australian Accounting Standards. This responsibility includes establishing and maintaining internal controls relevant to the preparation and fair presentation of the financial statements that are free from material misstatement, whether due to fraud or error; selecting and applying appropriate accounting policies; and making accounting estimates that are reasonable in the circumstances.

Auditor's Responsibility

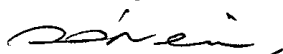
My responsibility is to express an opinion on the financial statements based on the audit. The audit was conducted in accordance with the requirements of the *Public Finance and Audit Act 1987* and Australian Auditing Standards. The Auditing Standards require that the auditor complies with relevant ethical requirements relating to audit engagements and plans and performs the audit to obtain reasonable assurance whether the financial statements are free from material misstatement.

An audit involves performing procedures to obtain audit evidence about the amounts and disclosures in the financial statements. The procedures selected depend on the auditor's judgement, including the assessment of the risks of material misstatement of the financial statements, whether due to fraud or error. In making those risk assessments, the auditor considers internal control relevant to the entity's preparation and fair presentation of the financial statements in order to design audit procedures that are appropriate in the circumstances. An audit also includes evaluating the appropriateness of the accounting policies used and the reasonableness of accounting estimates made by the members, as well as the overall presentation of the financial statements.

I believe that the audit evidence I have obtained is sufficient and appropriate to provide a basis for my auditor's opinion.

Auditor's Opinion

In my opinion, the financial statements present fairly, in all material respects, the financial position of the History Trust of South Australia as at 30 June 2009, and its financial performance and its cash flows for the year then ended in accordance with the Treasurer's Instructions promulgated under the provisions of the *Public Finance and Audit Act 1987* and Australian Accounting Standards.



S O'Neill
AUDITOR-GENERAL
29 September 2009

History Trust of South Australia

STATEMENT OF COMPREHENSIVE INCOME

For the year ended 30 June 2009

	Note No.	2009 \$'000	2008 \$'000
Expenses			
Staff expenses	5	3 235	3 062
Supplies and services	6	3 114	2 893
Depreciation expenses	7	666	595
Grant payments	8	185	180
Total expenses		7 200	6 730
Income			
Revenues from fees and charges	10	1 046	969
Interest revenues	11	142	180
Resources received free of charge	14	65	418
Other income	12	823	749
Total income		2 076	2 316
Net cost of providing services		(5 124)	(4 414)
Revenues from / payments to SA Government			
Revenue from SA Government – recurrent		4 333	4 090
Revenue from SA Government – capital grant		273	160
Total revenues from SA Government		4 606	4 250
Net result		(518)	(164)
Other comprehensive income			
Revaluation of land and buildings		-	4 994
Revaluation of heritage collections		-	632
Total comprehensive result		(518)	5 462

The net result and total comprehensive result are attributable to the SA Government as owner

History Trust of South Australia

STATEMENT OF FINANCIAL POSITION

as at 30 June 2009

	Note No.	2009 \$'000	2008 \$'000
Current assets			
Cash and cash equivalents	22	1 570	1 521
Receivables	13	39	58
Inventories		108	93
Total current assets		1 717	1 672
Non-current assets			
Property, plant and equipment	14	20 401	20 990
Heritage collections	14	11 296	11 231
Total non-current assets		31 697	32 221
Total assets		33 414	33 893
Current liabilities			
Payables	15	163	245
Staff benefits	16	393	333
Provisions	17	17	20
Total current liabilities		573	598
Non-current liabilities			
Payables	15	45	36
Staff benefits	16	448	389
Provisions	17	48	52
Total non-current liabilities		541	477
Total liabilities		1 114	1 075
Net Assets		32 300	32 818
Equity			
Retained earnings	18	16 794	17 312
Asset revaluation reserve	18	15 506	15 506
Total Equity		32 300	32 818

The total equity is attributable to the SA Government as owner

Unrecognised contractual commitments	20
Contingent assets and liabilities	21



History Trust of South Australia

STATEMENT OF CHANGES IN EQUITY

For the year ended 30 June 2009

	Note No	Asset Revaluation Reserve \$'000	Retained Earnings \$'000	Total \$'000
Balance at 30 June 2007		9 880	20 181	30 061
Changes in accounting policy and error correction	3	-	(2 705)	(2 705)
Restated balance at 30 June 2007		9 880	17 476	27 356
Net result for 2007-08		-	(164)	(164)
Gain on revaluation of land during 2007-08		2 445	-	2 445
Gain on revaluation of building 2007-08		2 549	-	2 549
Gain on revaluation of heritage collections during 2007-08		632	-	632
Net gain on financial assets taken to equity		5 626	-	5 626
Total comprehensive result for 2007-08		5 626	(164)	5 462
Balance at 30 June 2008		15 506	17 312	32 818
Net result for 2008-09		-	(518)	(518)
Total comprehensive result for 2008-09		-	(518)	(518)
Balance at 30 June 2009		15 506	16 794	32 300

All changes in equity are attributable to SA Government as owner.

The above statement should be read in conjunction with the accompanying notes

Re

History Trust of South Australia			
STATEMENT OF CASH FLOW			
For the year ended 30 June 2009			
	Note	2009	2008
	No.	\$'000	\$'000
Cash flows from operating activities			
Cash outflows			
Staff payments		(3 140)	(3 035)
Payments for supplies and services		(3 186)	(2 764)
Payments of grants		(185)	(180)
Cash (used in) operations		(6 511)	(5 979)
Cash inflows			
Fees and charges		1 061	984
Interest received		147	180
Other receipts		823	750
Cash generated from operations		2 031	1 914
Cash flows from SA Government			
Receipts from SA Government – recurrent operating		4 333	4 090
Receipts from SA Government – capital grant		273	160
Cash generated from SA Government		4 606	4 250
Net cash provided by operating activities	22	126	185
Cash flows from investing activities			
Cash outflows			
Purchase of property, plant and equipment		(77)	(10)
Cash (used in) investing activities		(77)	(10)
Net cash (used in) investing activities		(77)	(10)
Net increase in cash and cash equivalents		49	175
Cash and cash equivalents at the beginning of the 1 July		1 521	1 346
Cash and cash equivalents at the end of 30 June	22	1 570	1 521

History Trust of South Australia

NOTE INDEX

Objectives of the History Trust of South Australia (the Trust)	Note 1
Summary of significant accounting policies	Note 2
New and revised accounting standards and policies	Note 3
Activities of the Trust	Note 4
Expenses notes	
Staff expenses	Note 5
Remuneration of staff	Note 5
Supplies and services	Note 6
Depreciation expense	Note 7
Grants	Note 8
Auditors remuneration	Note 9
Income notes	
Revenue from fee and charges	Note 10
Interest revenues	Note 11
Resources received free of charge	Note 14
Other income	Note 12
Asset notes	
Cash and cash equivalents	Note 22
Receivables	Note 13
Property, plant and equipment	Note 14
Heritage collections	Note 14
Liability notes	
Payables	Note 15
Staff benefits	Note 16
Provisions	Note 17
Equity notes	
Equity	Note 18
Other notes	
Financial instructions/financial risk management	Note 19
Unrecognised contractual commitments	Note 20
Contingent assets and liabilities	Note 21
Cash flow reconciliation	Note 22
Remuneration of board and committee members	Note 5

NOTES TO THE FINANCIAL STATEMENTS

Note 1. Objectives of the History Trust of South Australia (the Trust)

The Trust's objectives are to:

- raise the level of community and schools-based participation in the study and enjoyment of South Australian history and the preservation of its evidence;
- mount popular exhibitions, events and other public programs on South Australian history and actively involve the community in their research and preparation;
- preserve the state's collection of movable items;
- provide advice and assistance to museums, historical societies and authors.

The Trust is charged with the management of the History Trust of South Australia, as prescribed under the *History Trust of South Australia Act 1981*.

The Trust's principal source of funds consists of grants from the State Government.

Note 2. Summary of Significant Accounting Policies

a) Statement of compliance

The financial statements are general purpose financial statements. The accounts have been prepared in accordance with relevant Australian Accounting Standards and Treasurer's Instructions and Accounting Policy Statements promulgated under the provision of the *Public Finance and Audit Act 1987*.

Except for the amendments to AASB101 *Presentation of Financial Statements* (September 2007 version) including AASB 2007-08 and AASB 2007-10 (these standards make consequential amendments to other standards as a result of the revised AASB 101), which the Trust has early adopted, Australian Accounting Standards and interpretations that have recently been issued or amended but are not yet effective have not been adopted by the Trust for the reporting period ending 30 June 2009. These are outlined in note 3.

b) Basis of preparation

The preparation of the financial statements requires:

- the use of certain accounting estimates and requires management to exercise its judgement in the process of applying the Trust's accounting policies. The areas involving a higher degree of judgement or where assumptions and estimates are significant to the financial statements, these are outlined in the applicable notes;
- accounting policies are selected and applied in a manner which ensures that the resulting financial information satisfies the concepts of relevance and reliability, thereby ensuring that the substance of the underlying transactions or other events are reported; and
- compliance with Accounting Policy Statements issued pursuant to section 41 of the *Public Finance and Audit Act 1987*. In the interest of public accountability and transparency the Accounting Policy Statements require the following note disclosures, which have been included in the financial statements:
 - a) revenues, expenses, assets and liabilities where the counterparty/transaction is with an entity within the SA Government as at reporting date, classified according to their nature. A threshold of \$100 000 for separate identification of these items applies;
 - b) staff whose normal remuneration is \$100 000 or more (within \$10 000 bandwidths) and the aggregate of the remuneration paid or payable or otherwise made available, directly or indirectly by the entity to those staff;
 - c) board member and remuneration information, where a board member is entitled to receive income from membership other than a direct out-of-pocket reimbursement.

The Trust's Statement of Comprehensive Income, Statement of Financial Position, and Statement of Changes in Equity have been prepared on an accrual basis and are in accordance with the historical cost convention, except for certain assets that were valued in accordance with the valuation policy applicable.

The Statement of Cash Flows has been prepared on a cash basis.

The financial statement has been prepared based on a twelve month period and presented in Australian currency.

re

The accounting policies set out below have been applied in preparing the financial statements for the year ended 30 June 2009 and the comparative information presented.

c) The Reporting Entity

The financial statements include all activities of the Trust. The Migration Museum Foundation Incorporated has not been consolidated into the financial statements of the Trust, as its transactions are considered immaterial. For an outline of the Migration Museum Foundation Incorporated transactions and assets refer to note 23. There are no inter-entity transactions or balances.

d) Comparative information

The presentation and classification of items in the financial statements are consistent with prior periods except were adjusted to reflect the early adoption of AASB 101 *Presentation of Financial Statements* and specific revised Accounting Standards and Accounting Policy Statements.

Comparative figures have been adjusted to conform to changes in presentation in these financial statements where required eg preparation of a single Statement of Comprehensive Income.

Where the Trust has applied an accounting policy retrospectively; retrospectively restated items in the financial statements; reclassified items in the financial statements, it has been disclosed in note 3.

The restate comparative amounts do not replace the original financial statement for the preceding period.

e) Rounding

All amounts in the financial statements and accompanying notes have been rounded to the nearest thousand dollars (\$'000).

f) Taxation

The Trust is not subject to income tax. The Trust is liable for payroll tax, fringe benefits tax, goods and services tax (GST), emergency services levy and local government rates.

Income, expenses and assets are recognized net of the amount of GST except:

- When the GST incurred on a purchase of goods or services is not recoverable from the Australian Taxation Office, in which case the GST is recognized as part of the cost of acquisition of the asset or as part of the expense item applicable; and
- Receivables and payables, which are stated with the amount of GST included.

The net amount of GST recoverable from, or payable to the Australian Taxation Office is not recognised as a receivable/payable in the Statement of Financial Position as the Trust is a member of an approved GST group of which Arts SA, a division of the Department of Premier and Cabinet, is responsible for the remittance and collection of GST. There are no cash flows relating to GST transaction with the Australian Taxation Office in the Statement of Cash Flow.

Unrecognised contractual commitments and contingencies are disclosed net of the amount of GST recoverable from, or payable to the Australian Taxation Office. If GST is not payable to, or recoverable from the Australian Taxation Office, the commitments and contingencies are disclosed on a gross basis.

g) Income

Income is recognised to the extent that it is probable that the flow of economic benefits to the Trust will occur and can be reliably measured.

Income has been aggregated according to their nature and has not been offset unless required or permitted by a specific accounting standard, or where offset unless required or permitted by a specific Accounting Standard, or where offsetting reflects the substance of the transaction or other event.

The notes accompanying the financial statements disclose income where the counterparty/transaction is with an entity within the SA Government as at the reporting date, classified according to their nature.

Fees and charges

Revenues from fees and charges are derived from the provisions of goods and services to other SA government agencies and to the public. This revenue is recognised upon delivery of the service to the clients or by reference to the stage of completion.

m

Interest revenue

Interest revenue is recognised on a proportional basis taking into account the interest rates applicable to the financial assets.

Resources received free of charge

Resources received free of charge are recorded as revenue in the Statement of Comprehensive Income at their fair value. Contributions of services are recognised only when a fair value can be determined reliably and the services would be purchased if they had not been donated.

Other income

Other income consists of donations, grants and sponsorships. Income from the rendering of a service is recognised upon the delivery of the service to the customers. Government Grants are recognised as revenues in the period in which the Trust obtains control over the grants. Control over these revenues is normally obtained upon receipt.

Revenues from SA Government

Appropriations for Trust are recognised as revenue when the Trust obtains control over the funding. Control over appropriations is normally obtained upon receipt.

h) Expenses

Expenses are recognised to the extent that it is probable that the flow of economic benefits from the Trust will occur and can be reliably measured.

Expenses have been aggregated according to their nature and have not been offset unless required or permitted by a specific Accounting Standard, or where offsetting reflects the substance of the transaction or other event.

The notes accompanying the financial statements disclosure expenses where the counterparty/transaction is with an entity with the SA Government as at the reporting date, classified according to their nature

The following are specific recognition criteria:

Staff expenses

Staff expense includes all cost related to staff including wages and salaries, non-monetary benefits and leave entitlements. These are recognised when incurred.

Superannuation

The amount charged to the Statement of Comprehensive Income represents the contributions made by the Trust to the superannuation plan in respect of current services of current trust staff. The Department of Treasury and Finance centrally recognises the superannuation liability in the whole of government financial statements.

Depreciation and amortisation

All non-current assets, having a limited useful life, are systematically depreciated over their useful lives in a manner that reflects the consumption of their service potential.

Assets' residual values, useful lives and depreciation method are reviewed and adjusted if appropriate, on an annual basis.

Changes in the expected useful life or the expected pattern of consumption of future economic benefits embodied in the asset are accounted for prospectively by changing the time period or method, as appropriate, which is a change in accounting estimate.

Heritage Collections have unlimited useful lives. Their future economic benefits have not been consumed during the financial year. Therefore no depreciation is recognised in respect of these assets.

Depreciation/amortisation is calculated on a straight line basis over the estimated useful life of the following classes of assets as follows:

Class of asset	Useful life (years)
Buildings and Improvements	20 to 100
Plant and Equipment	3 to 25



Grants

For contributions payable, the contribution will be recognised as a liability and expense when the entity has a present obligation to pay the contribution and the expense recognition criteria are met.

All contributions paid by the Trust have been contributions with unconditional stipulations.

i) Current and non-current classification

Assets and liabilities are characterised as either current or non-current in nature. Assets and liabilities that are sold, consumed or realised as part of the normal operating cycle have been classified as current assets or current liabilities. All other assets and liabilities are classified as non-current.

j) Assets

Assets have been classified according to their nature and have not been offset unless required or permitted by a specific accounting standard, or where offsetting reflects the substance of the transaction or other event.

The notes accompanying the financial statements disclose financial assets where the counterparty/transaction is with an entity within the SA Government as at the reporting date, classified according to their nature.

Cash and cash equivalents

Cash and cash equivalents in the Statement of Financial Position includes cash at bank and on hand.

Cash is measured at nominal value.

Receivables

Receivables include amounts receivable from goods and services and other accruals.

Receivables arise in the normal course of selling goods and service to other government agencies and to the public. Receivables are generally due within 30 days after the issue of an invoice or the goods/services have been provided under a contractual arrangement.

The Trust determines the provision for doubtful debts based on a review of balances within receivables that are unlikely to be collected. These are generally receivables that are 90 days or more overdue.

Inventories

Inventories include goods and other property held for either sale or distribution at no or nominal cost in the ordinary course of business.

Non-current assets - Acquisition and recognition

Non-current assets are initially recorded at cost or at the value of any liabilities assumed, plus any incidental cost involved with the acquisition. Non-current assets are subsequently measured at fair value less accumulated depreciation.

Where assets are acquired at no value, or minimal value, they are recorded at their fair value in the Statement of Financial Position.

All non-current assets with a value equal to or in excess of \$5,000 are capitalised.

Revaluation of non-current assets*Land and Buildings*

Land and buildings have been valued at written down current cost (a proxy for fair value). Valuations of land and buildings were determined as at 30 June 2008 by Tim Nankivell, Australian Valuation Office. Land and buildings are independently valued every three years.

Plant and Equipment

Plant and equipment have been valued at historical cost.

Heritage Collections

The heritage collections are large and diverse. They include many items that are complex to value given considerations of market value and their unique representation of South Australia's social history.

Heritage Collections have been valued at fair value and are independently revalued every five years.

21

The heritage collections have been revalued as follows:

- National Motor Museum collections as at 30 June 2008
- Migration Museum collections as at 30 June 2008
- South Australian Maritime Museum collections as at 30 June 2007

The external valuations were carried out by the following recognised industry experts:

Collection	Industry Expert
National Motor Museum	Antony Davies
South Australian Maritime Museum	Christine Courtney, SeaWitch
South Australian Maritime Museum	George Codz Marine
South Australian Maritime Museum	Allan R Rice, Allan Rice Marine Surveys
Migration Museum	Anthony Hurl, Tusmore Antiques

Impairment

All non-current assets have been tested for indication of impairment at reporting date. Where there is indication of impairment, the recoverable amount is estimated. The amount by which the assets carrying amount exceeds the recoverable amount is recorded as an impairment loss. For revalued assets, an impairment loss is offset against the respective asset revaluation reserve.

Asset revaluation reserve

Any revaluation increment is credited to the asset revaluation reserve, except to the extent that it reverses a revaluation decrease of the same asset class previously recognised in the Statement of Comprehensive Income, in which case the increase is recognised in the Statement of Comprehensive Income.

Any revaluation decrease is recognised in the Statement of Comprehensive Income, except to the extent that it offsets a previous revaluation increase for the same asset class, in which case the decrease is debited directly to the asset revaluation reserve to the extent of the credit balance existing in revaluations reserve for that asset class.

k) Liabilities

Liabilities have been classified according to their nature and have not been offset unless required or permitted by a specific accounting standard, or where offsetting reflects the substance of the transaction or other event.

The notes accompanying the financial statements disclose financial liabilities where the counterparty/transaction is with an entity within the SA Government as at the reporting date, classified according to their nature.

Payables

Payables include creditors, accrued expenses and staff benefit on-costs.

Creditors represent the amounts owing for goods and services received prior to the end of the reporting period that are unpaid at the end of the reporting period. Creditors include all unpaid invoices received relating to the normal operations of the Trust.

Accrued expenses represent goods and services provided by other parties during the period that are unpaid at the end of the reporting period and where an invoice has not been received.

All payables are measured at their nominal amount and are normally settled within 30 days from the date of the invoice or date the invoice is first received.

Staff benefit on-costs include payroll tax and superannuation contributions in respect to outstanding liabilities for salaries and wages, long service leave and annual leave.

The Trust makes contributions to several SA Government and externally managed superannuation schemes. There is no liability for payments to beneficiaries as they have been assumed by the respective superannuation schemes. The only liability outstanding at reporting date relates to any contributions due but not yet paid to the South Australian Superannuation Board.

Leases

The determination of whether an arrangement is or contains a lease is based on the substance of the arrangement.

The Trust has entered into operating leases.



Operating Leases

The Trust has entered into a number of operating lease agreements for accommodation, plant and equipment where the lessors effectively retain the entire risks and benefits incidental to ownership of the items held under the operating leases.

Operating lease payments are recognised as an expense in the Statement of Comprehensive Income on a straight-line basis over the lease term. The straight-line basis is representative of the pattern of benefits derived from the leased assets.

Staff benefits

These benefits accrue for staff as a result of services provided up to the reporting date that remain unpaid. Non current staff benefits are measured at nominal amounts.

Wages, salaries, annual leave and sick leave

The liability for salaries and wages are measured as the amount unpaid at the reporting date at remuneration rates current at reporting date.

The annual leave liability is expected to be payable within twelve months and is measured at the undiscounted amount expected to be paid. In the unusual event where salary and wages and annual leave are payable later than 12 months, the liability will be measured at present value.

No provision has been made for sick leave as all sick leave is non-vesting and the average sick leave taken in future years by staff is estimated to be less than the annual entitlement of sick leave.

Long service leave

The liability for long service leave is recognised after a staff member has completed 6.5 years of service. An actuarial assessment of Long Service Leave undertaken by the Department of Treasury and Finance based on a significant sample of staff members throughout the South Australian public sector determined that the liability measured using the short hand method was not materially different from the liability measured using the present value of expected future payments. This calculation is consistent with the Trust's experience of staff retention and leave taken.

Provision

A liability has been reported to reflect unsettled workers compensation claims. The workers compensation provision is based on an actuarial assessment performed by the Public Sector Workforce Division of the Department of Premier and Cabinet. These claims are expected to be settled within the next financial year.

l) Unrecognised contractual commitments

Commitments include operating, capital and outsourcing arrangements arising from contractual or statutory sources and are disclosed at their nominal value.

Unrecognised contractual commitments are disclosed net of the amount of GST recoverable from, or payable to the Australian Taxation Office. If GST is not payable to, or recoverable from the Australian Taxation Office, the commitments are disclosed on a gross basis.

m) Insurance

The Trust has arranged, through the South Australian Government Financing Authority a SAICORP division, to insure all major risks of the Trust. The excess payable under this arrangement varies depending on each class of insurance held.



Note 3. New and revised accounting standards and policies

Details of the accounting policies that the Trust has changed during 2008-09 are detailed below. The details of the impact were not significant in the Trust's financial statements and were applied for the first time in 2007-08 as below.

3.1 Heritage Collection

All Heritage Collections donated during 2007-08 and previous years, had been capitalised and revalued as per the Trusts former collection policy. In accordance with the APS 2.15 (APF III - Asset Accounting Framework) the trust has changed the Heritage Collection policy from a capitalisation threshold of \$0 to \$5,000. The Trust will continue to revalue all Heritage Collections over \$5,000 in the financial statements every five years.

3.2 Prior Period Adjustment

In accordance with Australian Accounting Standards, the change in accounting policy has been retrospectively applied to the 2007-08 financial year. This adjustment has an effect on the Statement of Comprehensive Income and Statement of Financial Position for 2007-08 as stated below:

Reconciliation of Retained Earnings		\$'000	
Balance at 30 June 2007		20 181	
Change in accounting policy – prior period adjustment		(2 705)	
Net Adjustment to Retained Earnings		17 476	

	2008 Published Result \$'000	Total Correction \$'000	2008 Revised Result \$'000
Statement of Comprehensive Income			
Income			
Resources received free of charge	432	(14)	418
Total Income	2 330	(14)	2 316
Net cost of providing services	(4 400)	(14)	(4 414)
Net result	(150)	(14)	(164)
Statement of Financial Position			
Non-current assets			
Heritage collections	13 950	(2 719)	11 231
Total Non-current assets	34 940	(2 719)	32 221
Total assets	36 612	(2 719)	33 893
Net assets	35 537	(2 719)	32 818
Retained Earnings	20 031	(2 719)	17 312
Total Equity	35 537	(2 719)	32 818

Issued or amended but not yet effective

Except for the amendments to AASB 101 *Presentation of Financial Statements*, which the Trust has early-adopted, the Australian accounting standards and interpretations that have recently been issued or amended but are not yet effective, have not been adopted by the Trust for the reporting period ending 30 June 2009. The Trust has assessed the impact of the new and amended standards and interpretation and considers there will be no impact on the accounting policies or the financial statement of the Trust.

Note 4. Activities of the Trust

Activities of the Trust has not been separately disclosed as the Trust has one identifiable major activity, being the maintenance and preservation of the state's historical collections and raising community awareness of the state's history.

Note 5. Staff expenses

	2009	2008
	\$'000	\$'000
Salaries and wages	2 409	2 310
Superannuation	297	270
Long service leave	125	91
Annual leave	228	219
Payroll tax	129	121
Board fees	10	9
Other staff related expenses	37	42
Total staff benefits expenses	3 235	3 062

Remuneration of staff

The number of staff whose remuneration received or receivable falls within the following bands:

	Number of staff	Number of staff
	2009	2008
\$100,000 - \$109,999	1	-
\$110,000 - \$119,999	-	1
\$140,000 - \$149,999	1	1
Total number of staff	2	2

The table includes all staff who received remuneration of \$100 000 or more during the year. Remuneration of staff reflects all costs including salaries and wages, superannuation contributions, fringe benefits tax and other salary sacrifice benefits. The total remuneration received by these staff for the year was \$249,000 (\$255,000).

Remuneration of Board Members

The number of Board members who received income from the Trust fell within the following bands:

	Number of Board Members	Number of Board Members
	2009	2008
\$0 - \$9,999	8	8
Total number of Board members	8	8

The total income received by these Board members for the year was \$10,000 (\$9,000). Board members do not receive superannuation payments.

Related party disclosures

During the financial year the following persons held a position on the Trust;

Mr P Broderick (Chair)	Mr B Moulds
Ms C Elstob	Ms M Nasser-Eddine
Dr A Mackinnon	Mr P. Satchell
Prof S Magarey	Mr I Short

The members of the Trust, or their related entities, have transactions with the Board that occur within a normal customer or supplier relationship on terms and conditions no more favourable than those with which it is reasonably expected the entity would have adopted if the transactions were undertaken with any other entity at arm's length in similar circumstances.

2

Note 6. Supplies and services

	2009 \$'000	2008 \$'000
Supplies and services provided by entities external to the SA Government		
Accommodation	273	239
Building maintenance	210	165
Communication and stationery	182	146
Cost of goods sold	149	120
Exhibitions and collections	375	522
Information technology	79	73
Insurance & risk management	76	65
Marketing and promotion	205	316
Minor equipment	43	50
Operating leases	114	75
Professional fees	35	36
Projects	132	46
Travel	66	79
Other	111	147
Total supplies and services – Non SA Government entities	2050	2079
Supplies and services provided by entities within the SA Government		
Building maintenance	514	356
Business Services Charges	112	91
Conservation	228	214
Operating leases	210	153
Total supplies and services – SA Government entities	1 064	814
Total supplies and services	3 114	2 893

Note 7. Depreciation expense

	2009 \$'000	2008 \$'000
Buildings and improvements	640	579
Plant and equipment	26	16
Total depreciation expense	666	595

Note 8. Grant payments

	2009 \$'000	2008 \$'000
Community History	42	42
Museum Accreditation and Grant Program	143	138
Total grant payments	185	180

Note 9. Auditor's remuneration

	2009 \$'000	2008 \$'000
Audit fees paid/payable to the Auditor-General's Department	35	35
Total audit fees - SA Government entities	35	35

Other Services

No other services were provided by the Auditor-General's Department to the Trust.

Note 10. Revenues from fees and charges

	2009 \$'000	2008 \$'000
Revenues from fees and charges		
Admissions and Tours	660	636
Facilities and rent	73	60
Sales of goods	240	214
Other Sales	73	59
Total revenue from fees and charges	1 046	969

Note 11. Interest revenues

	2009 \$'000	2008 \$'000
Interest on deposit with Treasurer	142	180
Total interest revenues	142	180

Note 12. Other income

	2009 \$'000	2008 \$'000
Other income received/receivable from entities external to the SA Government		
Sponsorship	204	152
Community Arts Development program	30	35
Grants	186	127
Other receipts	63	130
Total other income– Non SA Government entities	483	444
Other incomes received/receivable from entities within the SA Government		
Artlab Conservation	228	214
Business Services	112	91
Total other income – SA Government entities	340	305
Total other income	823	749

Note 13. Receivables

	2009 \$'000	2008 \$'000
Receivables		
Debtors	35	49
Accrued revenue	4	9
Total receivables	39	58

Note 14. Property, plant and equipment and heritage collections
--

	2009	2008
Land, buildings and improvements	\$'000	\$'000
Land at fair value	5 565	5 565
Buildings and improvements at fair value	36 818	36 818
Works in Progress	-	-
Accumulated Depreciation	(22 096)	(21 456)
Total land, buildings and improvements	20 287	20 927
Plant and equipment		
Plant and equipment at cost (deemed fair value)	336	259
Accumulated depreciation	(222)	(196)
Total plant and equipment	114	63
Total heritage collections	11 296	11 231
Total property, plant and equipment and heritage collections	31 697	32 221

Valuation of land, buildings and improvements

A valuation of land, buildings and improvements was performed by an independent valuer from the Australian Valuation Office as at 30 June 2008. The valuer arrived at fair value based on recent market transactions for similar land and buildings in the area taking into account zoning and restricted use.

Impairment

There were no indications of impairment of property, plant and equipment, infrastructure and intangible assets at 30 June 2009.

Reconciliation of property, plant and equipment 2009

	Land	Buildings & Improvements	Plant & Equipment	Total
	\$'000	\$'000	\$'000	\$'000
Carrying amount at 1 July	5 565	15 362	63	20 990
Depreciation expense	-	(640)	(26)	(666)
Additions	-	-	77	77
Carrying amount at 30 June	5 565	14 722	114	20 401

Reconciliation of property, plant and equipment 2008

	Land	Buildings & Improvements	Plant & Equipment	Total
	\$'000	\$'000	\$'000	\$'000
Carrying amount at 1 July	3 120	13 391	70	16 581
Depreciation expense	-	(579)	(16)	(595)
Additions	-	1	9	10
Revaluation increment	2 445	2 549	-	4 994
Carrying amount at 30 June	5 565	15 362	63	20 990

Reconciliation of heritage collections

	2009	2008
	\$'000	\$'000
Carrying amount at 1 July	11 231	12 886
Resources received free of charge	65	418
Change in Accounting Policy	-	(2 705)
Revaluation increments	-	632
Carrying amount at 30 June	11 296	11 231

2

Note 15. Payables

	2009 \$'000	2008 \$'000
Current		
Creditors and accruals	104	194
Staff benefit on-costs	59	51
Total current payables	163	245
Non-current		
Staff benefit on-costs	45	36
Total non-current payables	45	36
Total payables	208	281

Note 16. Staff benefits

	2009 \$'000	2008 \$'000
Current		
Annual leave	233	203
Long service leave	89	72
Accrued salaries and wages	71	58
Total current staff benefits	393	333
Non-Current		
Long service leave	448	389
Total non-current staff benefits	448	389
Total staff benefits	841	722
Total staff benefits and on-costs	945	809

Note 17. Provisions

	2009 \$'000	2008 \$'000
Current		
Provision for workers compensation	17	20
Total current provisions	17	20
Non-current		
Provision for workers compensation	48	52
Total non-current provisions	48	52
Total provisions	65	72
Reconciliation of the provision for workers compensation		
Provision at the beginning of the financial year	72	63
Increase in provision during the year	-	9
Amounts paid.	(7)	-
Provision for workers compensation at the end of the financial year	65	72

Note 18. Equity

	2009 \$'000	2008 \$'000
Retained earnings	16 794	17 312
Asset revaluation reserve	15 506	15 506
Total Equity	32 300	33 818

Note 19. Financial instruments

All financial assets and liabilities are carried at cost and no financial asset or liability is impaired. All Financial assets and liabilities will mature before the end of 2008-09 financial year.

Financial Instruments

Category/Statement of Financial Position item	Note	2009	2008
		Carrying amount/Fair value	Carrying amount/Fair value
		\$'000	\$'000
Financial Assets			
Cash and cash equivalents	22	1 570	1 521
Receivables*	13	39	58
		1 609	1 579
Financial Liabilities	15		
Payables*		104	194
		104	194

*Receivables and payables amounts are disclosed here exclude amounts relating to statutory receivables and payables. Statutory receivables and payables are where rights or obligations have their source in legislation such as GST and taxes etc.

Ageing analysis of financial assets

	2009	2008
	Receivables	Receivables
	\$'000	\$'000
Past due by:		
Overdue for < 30 days	29	22
Overdue for 30 – 60 days	3	27
Overdue for > 60 days	7	9
	39	58

The Trust has not assessed any of its receivables as being impaired.

Credit Risk Exposure

The Trust's maximum exposure to credit risk at reporting date in relation to financial assets is the carrying amount of those assets as indicated on the Statement of Financial Position. The Trust has no significant exposures to any concentrations of credit risk.

Liquidity Risk

Liquidity risk arises where the Trust is unable to meet its financial obligations as they fall due. The Trust is principally funded from appropriations by SA Government. The Trust works with the Department of Treasury and Finance to determine the cash flows associated with its Government approved program of work and to ensure funding is provided through SA Government budgetary process to meet the expected cashflows. The Trust settles undisputed accounts within 30 days from the date of the invoice or date the invoice is first received. In the event of a dispute, payment is made 30 days from resolution. The Trusts exposure to liquidity risk is insignificant based on past experience.

Market risk

Market risk for the Trust is primarily through interest rate risk. This risk is not considered material.

Maturity Analysis

All financial assets and financial liabilities are receivable/payable within one year.

Sensitivity disclosure analysis

A sensitivity analysis has not been undertaken for the interest rate risk of the Trust as it has been determined the possible impact on the Statement of Comprehensive Income or total equity from fluctuations in interest rates is immaterial.

2

Note 20. Unrecognised contractual commitments
--

Operating lease commitments

Commitments under non-cancellable operating leases at the reporting date and not recognised as liabilities in the financial statements, are payable as follows:

	2009 \$'000	2008 \$'000
Not later than one year	97	70
Later than one year and not later than five years	85	58
Total operating lease commitments	182	128

The operating lease commitments comprise:

- A non-cancellable photocopier lease, with rental payable monthly in arrears. No contingent rental provisions exist within the lease agreement and no option to renew the lease at the end of its term.
- There are no property leases as at 30 June 2009.

Remuneration commitments

Commitments under non-cancellable for remuneration contracts at the reporting date and not recognised as liabilities in the financial statements, are payable as follows:

	2009 \$'000	2008 \$'000
Not later than one year	714	491
Later than one year and not later than five years	663	797
Total remuneration commitments	1 377	1 288

The remuneration commitments comprise of staff on long term contracts. The Trust does not offer fixed term remuneration contracts greater than five years.

Capital commitments

	2009 \$'000	2008 \$'000
Capital expenditure contracted for at the reporting date is payable as follows:		
Not later than one year	-	180
Total capital commitments	-	180

These capital commitments are not recognised in the financial statements as liabilities

Note 21. Contingent assets and liabilities

There are no known contingent assets and liabilities as at 30 June 2009.

Note 22. Cash flow reconciliation

	2009	2008
	\$'000	\$'000
Reconciliation of cash and cash equivalents – cash at year end as per:		
Statement of Cash Flow, cash includes cash on hand and at bank		
Cash as at the end of the financial year as shown in the Statement of		
Cash Flow is reconciled to the items in the Statement of Financial		
Position as follows:		
Deposits with Treasurer	1 554	1 505
Cash on hand	16	16
Cash as recorded in the Statements of Financial Position	1 570	1 521

Reconciliation of net cash provided by operating activities to net cost of providing services:

Net cash provided by operating activities	126	185
Less revenues from SA Government	(4 606)	(4 250)
Add (less) non cash items		
Depreciation of property, plant and equipment	(666)	(595)
Donations of heritage collections	65	418
Movement in assets and liabilities		
(Decrease) in receivables	(19)	(14)
Increase in inventories	15	12
Decrease (Increase) in payables	73	(145)
(Increase) in staff benefits and provisions	(112)	(25)
Net cost of providing services for operating activities	(5 124)	(4 414)

Note 23. Controlled entity

The Trust has the following controlled entity:

Name of controlled entity	Place of incorporation
The Migration Museum Foundation Incorporated	Australia

The transactions, assets and liabilities of this entity have not been consolidated into the Trust's financial statements as the transactions, assets and liabilities were assessed as immaterial. Below is a summary of the audited financial statements of the Migration Museum Foundation Incorporated. There are no inter-entity transactions.

Statement of Comprehensive Income		
	2009	2008
	\$'000	\$'000
Expenses		
Supplies and services	20	8
Total expenses	20	8
Income		
Revenue from fees and charges	27	35
Interest revenues	24	30
Total income	51	65
Total comprehensive result	31	57

Statement of Financial Position		
	2009	2008
	\$'000	\$'000
Assets		
Cash and equivalents	527	496
Total assets	527	496
Equity		
Retained earnings	527	496
Total Equity	527	496


~

History Trust of South Australia**Certification of the Financial Statements**

We certify that the attached general purpose financial statements for the History Trust of South Australia:

- comply with relevant Treasurer's instructions issued under section 41 of the *Public Finance and Audit Act 1987*, and relevant Australian Accounting Standards;
- are in accordance with the accounts and records of the Trust; and
- present a true and fair view of the financial position of the History Trust of South Australia as at 30 June 2009 and the results of its operation and cash flows for the financial year.

We certify that the internal controls employed by the History Trust of South Australia for the financial year over its financial reporting and its preparation of the general purpose financial statements have been effective throughout the reporting period.



M Anderson
Chief Executive
HISTORY TRUST OF SOUTH AUSTRALIA
28 September 2009



P Broderick
Chairperson
HISTORY TRUST BOARD
28 September 2009



R Rudzinski
Business Manager
HISTORY TRUST OF SOUTH AUSTRALIA
28 September 2009