

SOUTH AUSTRALIA

---

# TWENTY SEVENTH ANNUAL REPORT

OF THE

# HISTORY TRUST of SOUTH AUSTRALIA

FOR THE

YEAR ENDED 30 JUNE 2007



**History Trust of South Australia**

Torrens Parade Ground  
Victoria Drive  
Adelaide SA 5000

GPO Box 1836  
Adelaide SA 5001

DX 464 Adelaide

Telephone: +61 8 8203 9888  
Facsimile: +61 8 8203 9883 (General)  
              +61 8 8203 9889 (Executive)  
Website: [www.history.sa.gov.au](http://www.history.sa.gov.au)  
Email: [staff@history.sa.gov.au](mailto:staff@history.sa.gov.au)

This report is prepared by the Directorate of the History Trust of South Australia.

ISSN 1832-8482

# Contents

<b>Background</b>	<b>1</b>
<b>Organisational Chart</b>	<b>2</b>
<b>Chairperson's Report</b>	<b>3</b>
<b>Chief Executive's Report</b>	<b>4</b>
<b>Highlights 2006-07</b>	<b>7</b>
<b>Achievements addressing the State Strategic Plan</b>	<b>8</b>
<b>Principal Objectives 2007–2008</b>	<b>9</b>
<b>Major Issues Facing the History Trust 2007–2008</b>	<b>10</b>
<b>Divisional Report</b>	<b>11</b>
Community History Unit	11
Migration Museum	16
National Motor Museum	20
South Australian Maritime Museum	24
Marketing and Sponsorship	28
Business Services	35
<b>APPENDICES</b>	<b>46</b>
1. Board of Trustees	47
2. Management Personnel	47
3. Staff as at 30 June 2006	48
4. Advisory Committees	49
5. Honorary Consultants/Valuers	49
6. Migration Museum Foundation Committee Members	49
7. Volunteer Services	50
8. Key Performance Indicators 2006–2007	51
9. Grants Obtained	51
10. Publications	52
11. Unpublished Conference Papers	52
12. Museums Accreditation and Grants Program	53
13. South Australian History Fund	55
14. Exhibition Program	56
15. Financial Statement for the year ended 30 June 2007	61

# Background

## Our Vision

*Our vision is to promote the value, understanding and enjoyment of history.*

## Our Mission

*Our mission is to encourage and work with the people of South Australia to:*

- *better understand our rich and distinctive history and*
- *enhance our sense of identity and belonging by making history a living and exciting element in the life of the State.*

## Who We Are

The History Trust of South Australia is a statutory authority reporting to Parliament through the Minister for the Arts. It was established in 1981 under the *History Trust of South Australia Act (1981, 1995, 2005)* to encourage the research and public presentation of South Australian history and to safeguard South Australia's material heritage. The Trust's central administration is located at the Torrens Parade Ground in central Adelaide, but its main public face is presented by three history museums — the Migration Museum, National Motor Museum and South Australian Maritime Museum. Changing exhibitions are also presented in the History Trust Exhibition Gallery at the Parade Ground. The Trust also manages an important community history program to assist community museums and historical researchers. The History Trust's Board of eight trustees reports to the Minister for the Arts.

## What We Do

Under the *History Trust of South Australia Act (1981, 1995, 2005)* the Trust is responsible for the following:

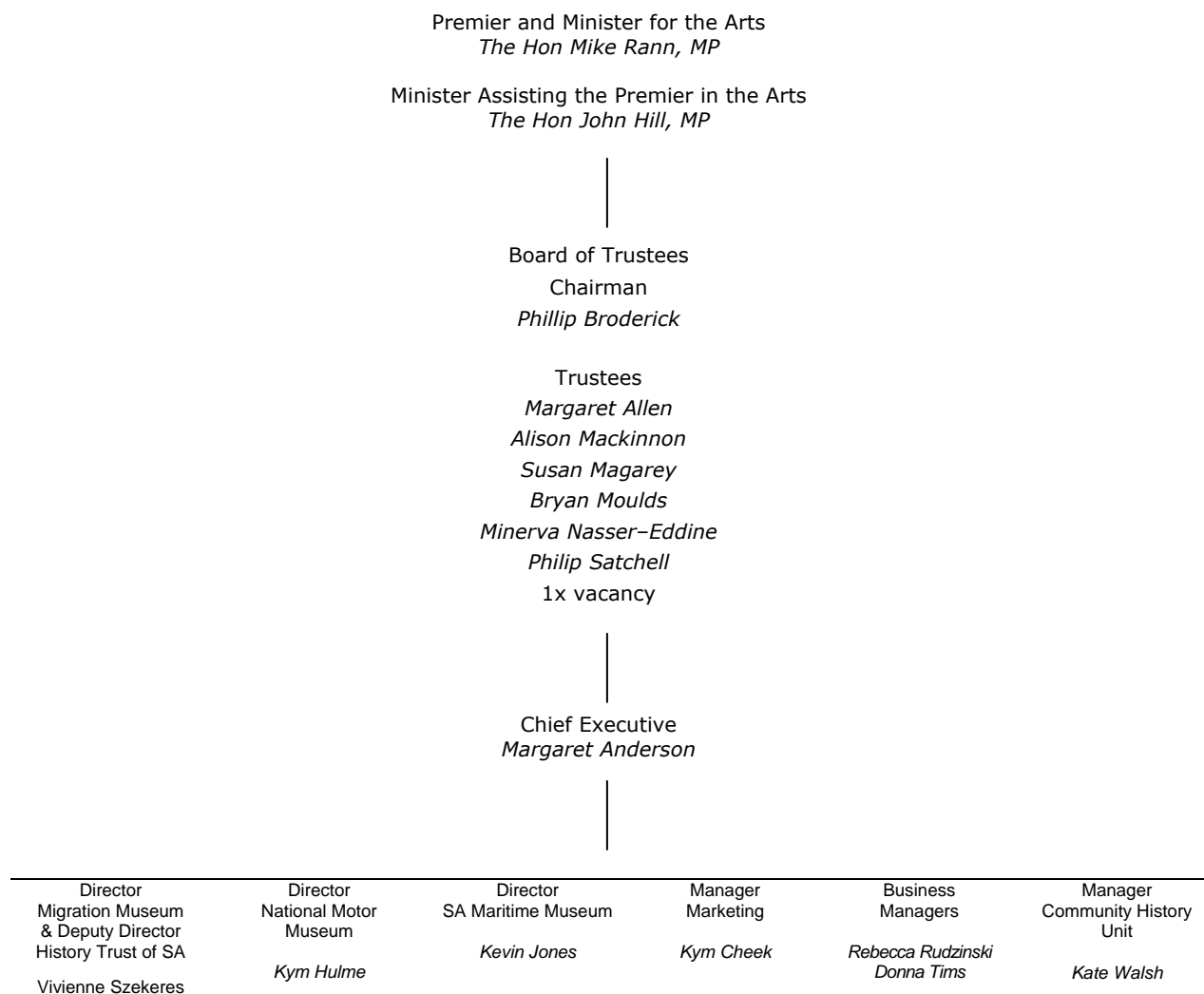
- researching and interpreting South Australia's history;
- preserving and exhibiting South Australia's material history;
- managing museums of its own and assisting the State's community museums;
- encouraging and assisting the work of South Australia's historians and historical societies;
- providing policy advice to the Minister for the Arts on issues of relevance to South Australia's history and material culture.

These responsibilities are realised through the following programs:

- managing three museums and a changing exhibitions gallery which interpret aspects of South Australia's history:
  - the Migration Museum – which preserves and interprets the history of migration to and settlement in South Australia;
  - the National Motor Museum – which manages and interprets a collection representing Australia's motoring history;
  - the South Australian Maritime Museum – which preserves a collection of maritime heritage objects and interprets the maritime history of South Australia;
  - the History Trust Exhibition Gallery – which presents exhibitions reflecting aspects of the history of South Australia and the city of Adelaide;
- providing advice and assistance to South Australia's 200 community history museums and 150 historical societies, as well as the many individuals who research South Australian history, through the Community History Unit. The Unit also administers two grants programs – the Museums Accreditation and Grants Program (for community museums) and the South Australian History Fund (for South Australian history publications, projects and research);
- managing the State Historical Collection;
- promoting South Australian history and the activities of the History Trust's museums.

# Organisational Chart

History Trust of South Australia as at 30 June 2006



## Chairperson's Report



The Hon John Hill, MP  
*Minister Assisting the Premier in the Arts*

Dear Minister

I am pleased to present the 27th Annual Report of the History Trust of South Australia, pursuant to section 20 of the History Trust of South Australia Act (1981, 1995, 2005), for the year ended 30 June 2007.

The Board is pleased to record the continuing success of the Trust in achieving its objectives, contributing to the cultural and economic well-being of the community. Levels of attendance were maintained at the Trust's museums, while an expanded audience in regional South Australia and interstate enjoyed access to one of a number of touring programs.

Community programs were a particular area of success, with more than 45 000 South Australians attending this year's *SA History Week*.

Also pleasing was increased usage of the Trust's on-line facility. This is an area flagged for future development by the Board.

I express thanks to my fellow Board members and to the Chief Executive and staff of the History Trust.

The Board also wishes to thank you for your continuing support and interest.

PHILLIP BRODERICK  
Chair

## Chief Executive's Report

It has been another very successful year for the History Trust, with overall visitor numbers maintained at the various sites, despite the inevitable disruption of a major redevelopment at the Migration Museum. Overall site attendance was 306 257, which represents a small increase over last year's total. Particularly pleasing was a substantial increase in our regional and interstate audience, reflecting our capacity this year to tour several exhibitions. An additional 112 254 visitors viewed one of the touring programs. On-line usage also increased to 233 370 – an increase of 45 per cent – as did the number of student visits to Trust sites (up to 40 866). A particular highlight of the year was the huge success of the fourth *SA History Week*. We estimate that over 45 000 South Australians participated in at least one event during *SA History Week*, making this year's event the biggest ever. There was also very strong media interest in the program, in both the metropolitan and regional press. The steady growth in our audience and the success of events like *SA History Week*, underlines the strength of community interest in history and confirms the role that history plays in building communities.



---

### Building communities – History plays its part

---

One of the great strengths of the History Trust is its strong base in the South Australian community. Over the years the Trust has built extensive networks linking regional and metropolitan South Australians, South Australia's many immigrant communities and Indigenous South Australians with our programs and with each other. The Trust also has a commitment to working in partnership with communities and with other agencies with allied interests, to present unique events like *SA History Week*, or the annual State History Conference. Programs like these encourage a sense of belonging and build a strong sense of place, both elements in fostering social cohesion.

---

### Community partnerships – fostering creativity

---

This year's program of exhibitions and events reflected the Trust's strong commitment to community partnerships. During the year Trust staff produced three new long-term and seven temporary exhibitions, three of which were designed to tour to regional South Australia and interstate. This brought the total of exhibitions on tour to eight, which is the largest touring component the Trust has ever managed. All of these exhibitions were produced with external funding and most were made available to recipients at either no cost, or at very minimal cost to cover transport.

Two of these touring exhibitions, *Wrecked! Tragedy and the Southern Seas* and *The River: Life on the Murray-Darling*, were produced and toured with the assistance of the *Visions of Australia* program. *The River* was produced in partnership with the Australian National Maritime Museum. The Trust could not have produced these exhibitions without *Visions* funding and certainly could not have sent them on tour. We were especially pleased therefore that the National Motor Museum was successful in gaining a further *Visions* grant to develop the touring exhibition *Off the Beaten Track: a Journey Across the Nation*. This exhibition will retrace the route of the first motor journey across the continent from south to north, with an exhibition based around the original vehicle, the Talbot, from the Museum's collection. This exhibition will visit regional and remote communities north of Adelaide to Darwin in 2008, marking the centenary of this extraordinary journey. Since it is now too fragile to drive the route, the Talbot will travel in an especially constructed trailer, which will also house the exhibition.

The success of these travelling exhibitions and the pleasing growth in audiences resulting from them, underlines the value of investment in exhibition production and touring. Such exhibitions allow South Australians in regional areas access to our programs and also bring the wealth of South Australia's history and collections to the attention of visitors interstate.

---

### **Extending access, contributing to Reconciliation**

---

The success of our program of smaller touring exhibitions has been very pleasing this year. There were four exhibitions in the program, two produced to extend the reach and the life of exhibitions first presented in the History Trust Gallery at the Torrens Parade Ground and two produced to mark specific events important to Aboriginal South Australians. Of particular note this year was the touring exhibition *Vote Yes: the 1967 Referendum*, produced in association with Reconciliation South Australia to tour Indigenous community centres, public libraries and community museums. An earlier exhibition *They Took Our Land and then Our Children: 1923 Ngarrindjeri Petition*, also continued to tour, marking part of the Trust's continuing contribution to Reconciliation. Between them these exhibitions visited 24 centres in regional South Australia, extending over the length and breadth of the State. This represents a remarkable achievement of our small staff. The Migration Museum also continued to offer its excellent multimedia education program *Impact of Colonisation on Aboriginal People in South Australia* to both student groups and adults. This program is now in strong demand from agencies, both within the South Australian public sector and externally, to increase understanding of Indigenous history in the State.

---

### **Supporting cultural diversity**

---

Each of the Trust's museums continued its strong commitment to working in partnership with communities to present diverse histories. In all 12 exhibitions were presented in association with community groups. The Migration Museum continued its very successful program of community access exhibitions in the *Forum* gallery, with five exhibitions presented over the year. Demand for this gallery continues to exceed available places, with the gallery currently booked well into 2009. The education program offered at the Migration Museum also continued to grow. Particularly successful this year was the outstanding program *Unpacking Histories*, initially presented as part of the *Come Out* festival. This program encourages students to explore how history is created, but also to question their assumptions about communities, both past and present. These and other programs reflect the Trust's contribution to the South Australian Strategic Plan objective to increase acceptance of cultural diversity as a positive aspect of community life.

---

### **Strengthening regional and volunteer communities**

---

A strong component of the Trust's work involves regional and volunteer communities. During the year the Community History Unit worked with organisations throughout the State, assisting to build capacity, particularly within volunteer organisations. Community history organisations – museums, historical societies and local archives – are important to regional areas for both economic and social reasons. They are central to local tourism strategies, helping to sustain tourism in regional South Australia, but they also contribute in important ways to community life, preserving community memory and identity. Many are also an important means of sustaining older South Australians as active, engaged members of their communities. Building the capacity of these groups to manage their programs makes an important contribution to the sustainability of regional communities.

During this year the Community History Unit conducted 20 regional field trips, presenting workshops, assisting in strategic planning and providing support with exhibition and collection projects. Assistance with funding such projects was provided through the Museums Accreditation and Grants Scheme and the South Australian History Fund, both funds which continue to be heavily oversubscribed. Unit staff also participated in a project developing prototype national standards for community museums. Such standards seem likely to be increasingly important in the future and the Unit has worked for a number of years to help position South Australia's community museums to meet these standards, if they are adopted nationally.

---

## **Nurturing and showcasing South Australian history**

---

South Australia has a great strength in the vitality of its historical community. This was exhibited during the year through the outstanding success of *SA History Week*, which involved some 200 community organisations, presenting 250 separate activities between them. We estimate that about 1 600 volunteers were involved with this event alone, contributing at least 6 000 hours (almost certainly an underestimate) to help make it a success. Evaluation of the program showed overwhelming support for it continuing, although identifying recurrent funding remains an issue for the Trust.

Equally successful were two free conferences presented during the year. The first, *The Great War and its Aftermath in South Australia*, was held over three days in August, timed to coincide with the final weeks of the Trust's exhibition *Gallipoli: The South Australian Story*. The second, presented in association with the State Electoral Office to commemorate 150 years of democracy in South Australia, was held in March. The Electoral Office also assisted the Trust with the exhibition *The Voice of the People: Democracy Comes to South Australia*, which opened in the previous October. Both conferences attracted capacity audiences. The Trust is grateful to our many partners in the universities and within the professional historical community, who presented papers at these conferences. In the light of the demands on volunteers during *SA History Week*, it was decided to hold the State History Conference later in the year.

The public response to these events underlines the significance many attach to preserving their history and getting to know it better. The Trust is currently investigating strategies for building on this community interest to present appropriate programs to mark the 175<sup>th</sup> anniversary of European settlement in 2011. Working with Government to plan for this event will be a priority for the Board in the coming year.

---

## **The State History Collection**

---

The Trust continued to improve its management of the State History Collection this year, particularly through a new collection management data-base. Curators made good progress in transferring data from the many separate data-bases, onto the new system, KE-EMu. This has proved to be a demanding process, with some inevitable frustrations for our small staff. However all agree that the advantages of the new system make the pain worthwhile! Storage is our greatest challenge – both quantity and quality. This is one of the priority areas for the Board in 2007-08.

---

## **Conclusion**

---

Once again the Trust's small staff has presented an extraordinary program of exhibitions, events, education programs and outreach services to an ever-expanding client group. The extent of the program and its vitality reflects the enthusiasm and commitment of a remarkable group of people, both staff and Board, and I thank them all sincerely.

MARGARET ANDERSON  
Chief Executive

## Highlights 2006-07

- Visitor numbers increased:
  - > total site attendances 306 257 (up from 305 804)
  - > Attendance at touring exhibitions 112 254 (up from 5 348)
  - > Attendance at *SA History Week* events 45 000 (up from 35 000)
- On-line visitor numbers increased 45% to 233 370
- Three new long-term and seven temporary exhibitions were curated in-house
- Thirteen community-partnership exhibitions were produced in-house
- Nine temporary exhibitions addressing aspects of cultural diversity were produced
- *Visions of Australia* touring grants assisted with the tours of *Wrecked! Tragedy and the Southern Seas* and *The River: Life on the Murray-Darling* to regional South Australia and interstate. *Visions* funding was also secured for *Off the Beaten Track*, an exhibition retracing the route of the Talbot from south to north in 1908
- 13 programs were presented in association with culturally diverse communities
- 11 programs were presented increasing understanding of Indigenous history
- *Vote Yes: the 1967 Referendum* was produced in partnership with Reconciliation South Australia to tour regional and community venues
- Education visits increased to 40 866 booked student visits, including 157 visits and activities from category 1-4 disadvantaged schools
- The South Australian Maritime Museum achieved its highest total of education visits
- 135 volunteers contributed 15 843 hours to assist in History Trust programs
- An additional 1 600 volunteers contributed 6 000 hours to *SA History Week* activities
- 254 new items were added to the State History Collection.
- Curators successfully transferred collection data to the new KE-EMu data-base, which went live in September 2006
- The Migration Museum completed conservation work on the veranda of the lying-in hospital and the chapel
- The National Motor Museum added a third large event to its annual program
- The Community History Unit presented seven regional training workshops and conducted 20 field visits to assist community museums, archives and historical societies across the state
- Community History Unit staff collaborated in the development of draft national standards for Australian museums
- The History Trust convened two free conferences on aspects of South Australian history
- The History Trust presented a program to commemorate the beginnings of democracy in South Australia, in association with the State Electoral Office.

## Achievements addressing the State Strategic Plan

In 2006-07 the History Trust contributed to a number of objectives in the State Strategic Plan as follows:

### **Objective 1: Growing Prosperity**

The History Trust contributed to this goal in 2006-07 by:

- Managing permanent tourist attractions on four locations, providing continuity of product
- Attracting 306 257 visitors to sites in Adelaide, Port Adelaide and Birdwood
- Attracting 170 508 interstate and international tourists to museum exhibitions and events
- Presenting programs in Indigenous history and cultural diversity to corporate and public sector clients to increase understanding
- Supporting cultural tourism in regional areas.

### **Objective 2: Improving Wellbeing**

The History Trust contributed to this goal in 2006-07 by:

- Providing opportunities for life-long learning through exhibitions, programs and access to research
- Supporting community organisations providing active engagement for older South Australians
- Promoting healthy choices in programs
- Creating a sense of belonging and connectedness through exhibitions and programs.

### **Objective 3: Attaining Sustainability**

The History Trust contributed to this goal in 2006-07 by:

- Using smart lighting in the Migration Museum redevelopment
- Highlighting water issues in the major touring exhibition *The River: Life on the Murray-Darling*
- Emphasising water issues in education programs at the SA Maritime Museum
- Presenting education programs in environmental history to 18,379 students.

### **Objective 4: Fostering Creativity**

The History Trust contributed to this goal in 2006-07 by:

- Developing and presenting 23 new exhibitions
- Developing and presenting four new education programs
- Presenting challenging histories that provoked thought and inspired debate
- Holding two free conferences presenting new historical research
- Researching two publications on aspects of history and the collection
- Presenting regional workshops in techniques of interpretation
- Presenting a new event showcasing emerging musicians
- Providing opportunities for creative volunteering

### **Objective 5: Building Communities**

The History Trust contributed to this goal in 2006-07 by:

- Developing and presenting exhibitions encouraging collective memory, a sense of belonging and a sense of place
- Providing safe places to explore challenging ideas
- Presenting education programs in the history of cultural diversity to 16,950 students
- Presenting education programs in Indigenous history to 12,712 students
- Presenting programs encouraging tolerance and understanding of difference
- Presenting programs to non-English speaking students
- Presenting free programs to students from disadvantaged schools
- Fostering regional history
- Supporting regional initiatives in Indigenous and diverse histories
- Touring exhibitions and other programs to regional South Australia
- Supporting volunteers in community organisations

### **Objective 6: Expanding Opportunity**

The History Trust contributed to this goal in 2006-07 by:

- Presenting exhibitions and education programs in Indigenous history
- Presenting skill-building workshops to volunteer groups in metropolitan and regional South Australia
- Presenting free programs to students from disadvantaged schools

## Principal Objectives 2007–2008

Identified in the History Trust of South Australia 2006–2009 Business Plan and with reference to South Australia's Strategic Plan (SASP).

Subject to funding in 2007-2008 the History Trust intends to:

- Complete the Migration Museum redevelopment
- Work with Government to develop a program to mark the 175<sup>th</sup> anniversary of European settlement in 2011.
- Co-ordinate and promote *SA History Week* in May 2008
- Present a program of temporary exhibitions at each of the Trust's sites
- Continue a program of touring exhibitions in regional South Australia and interstate
- deliver relevant education programs at the Migration Museum and South Australian Maritime Museum
- develop education programs at the National Motor Museum and for the History Trust Exhibition Gallery
- present the 16<sup>th</sup> State History Conference in August 2007, plan for the 17<sup>th</sup> State History Conference and collaborate with partners on other conferences
- progress two new publications on South Australian history
- continue collaborative training workshops in regional South Australia with Artlab Australia
- complete the transfer of collection management data to KE-EMu database
- progress urgent building maintenance priorities at the National Motor Museum and South Australian Maritime Museum
- advocate for improved funding for facilities management, particularly for the History Trust's heritage assets, collection storage and exhibition funding
- work with Arts SA to achieve a more satisfactory outcome for storage of the State History Collection
- continue to implement the OHS&W strategic plan
- continue to manage the Queen's Theatre for Arts SA
- Source additional sponsorship.

## **Major Issues Facing the History Trust 2007–2008**

- Continuing to attract more actual visitors
- Increasing the number of virtual visitors/users
- Retaining high levels of visitor satisfaction
- Funding the exhibition program
- Displaying and storing the State History Collection adequately
- Funding a touring exhibition program
- Meeting increased costs for exhibition production
- Meeting increased demand for education programs
- Satisfying audience demand for interactivity in exhibitions
- Expanding and developing the website
- Funding the digitisation of the collection
- Providing on-line access to the collection and historical research
- Maintaining and upgrading the Trust's heritage buildings
- Improving energy efficiency and overall sustainability
- Increasing storage space for acquisitions
- Marketing Trust programs
- Meeting increased costs for core requirements
- Maintaining value for money at South Australian Maritime Museum and National Motor Museum.

# Divisional Report

## Community History Unit

*The Community History Unit is based within the History Trust Directorate. The Unit manages a history resource centre that provides advice and assistance to researchers, historical societies, museums and the general public on South Australian history and historical sources. The Unit presents the State-wide annual community-based event SA History Week, organises an annual State History Conference, produces exhibitions and travelling displays, and issues a magazine on South Australian history. The Unit also holds a significant photographic collection, the South Australian Glass Negatives Collection.*

*The Community History Unit manages the Museums Accreditation and Grants Program (MAGP), which supports the State-wide network of community history museums to document, display, interpret, preserve and promote their local history and material heritage. It also administers the South Australian History Fund (SAHF), which supports research, publications and projects on South Australian history. There is a particular focus on regional South Australia.*



*The Voice of the People - Democracy Comes to South Australia exhibition  
At the Torrens Parade Ground*

## Community History Unit

The year was busy but particularly satisfying, with the Unit's public programs resulting in a significantly raised public awareness of South Australian history and of the role of the History Trust of South Australia. A diverse range of public programs resulted in new and extended partnerships with a wide variety of community organisations, the media and government agencies, in new audiences and in more history and new perspectives reaching the public arena.

---

### History in the community

---

The fourth *SA History Week* was held from 18 to 27 May 2007. This year the event attracted a phenomenal amount of community and media interest. Close to 200 organisations, many of them new to the event, presented 250 activities. In particular, the History Trust appreciated the efforts of around 1 600 volunteers from across the State who put in well over 6 000 hours of their time. A popular component of *SA History Week* was Adelaide City Council's 'Open Doors in the City', with a number of heritage places inviting visitors to take a special peek inside some of Adelaide's heritage treasures. Participants reported that *SA History Week* gave them the opportunity to try new audience initiatives and update displays; it boosted the confidence and sense of pride of volunteers and enhanced the status and credibility of their organisations within their local communities. It attracted new donations and even new volunteers. Overwhelmingly participants supported *SA History Week* remaining an annual event. The widespread coverage through the involvement of media sponsors, Messenger Community Newspapers, Channel 9 and 891 ABC Adelaide, ensured the event's success. Many members of the public responded, with information and stories, to the images chosen from the History Trust's Glass Negatives Collection to illustrate the *SA History Week* booklet.

This year it was decided to separate the annual State History Conference from *SA History Week*. The 2007 conference will be held in August 2007 instead of in the usual month of May. Much of the work to organise the conference, though, occurred in the 2006–07 year. The conference venue in the Barossa Valley and the theme, *Country Connections*, were determined, the call for papers and registration brochures were widely distributed and the program drawn up. Sponsors for the Conference were also secured, with the Department for Environment and Heritage, State Records of South Australia and the South Australian Tourism Commission offering their financial support.

The Unit worked with the Chief Executive to present two special focus conferences. *The Great War and its Aftermath in South Australia 1914–28* was held over three days, 2–4 August, and was timed to coincide with the final month of the exhibition, *Gallipoli: The South Australian Story*. It attracted 100 delegates who listened to 32 papers, many of which presented new perspectives on early 20th century South Australian history. The second special focus conference, *The Politics of Democracy in South Australia*, was held in partnership with the State Electoral Office on 8 and 9 March to mark the 150th anniversary of South Australia's democracy. It attracted 150 delegates who enjoyed a stimulating program involving 25 speakers from the academic fields of law, history and politics, as well as media commentators and past and present Members of Parliament. The papers from these two conferences were made available on the History Trust website, allowing a much wider audience the opportunity to appreciate the current depth and breadth of research and writing on South Australia's history. The papers at the Democracy conference were recorded by Radio Adelaide, and in a first for the History Trust, these audio-tapes were also placed on the Trust's website.

In addition, Community History Unit staff produced three issues of the magazine, *History Matters*, which maintained its popularity with history enthusiasts; and handled hundreds of enquiries from the general public, the media, researchers and community history groups on a wide range of history and museum-related topics. The Unit maintained a close working relationship with other related agencies and organisations, including Artlab Australia, Heritage Branch (Department for Environment and Heritage), State Records, State Library of South Australia, South Australian Tourism Commission, National Trust of South Australia, Historical Society of South Australia, Professional Historians Association, Oral History Association (SA Branch), History Council of South Australia, National Archives of Australia, Museums Australia and the Collections Council of Australia.

---

## Exhibition and public programs

---

### History Trust Exhibition Gallery

The exhibition, *Gallipoli: the South Australian Story*, closed on 31 August. Items of memorabilia lent to the Trust by cultural institutions, local museums and individuals were returned and most of the interpretive panels were given to the South Australian Army Museum, Keswick Barracks, to augment their own displays on the Gallipoli campaign.

*The Voice of the People: Democracy Comes to South Australia* opened on 24 October. This exhibition was a joint project with the State Electoral Office to mark the 150th anniversary of South Australia's democracy. It brought together some of South Australia's most significant political documents and presented complex ideas and information about South Australia's democratic history in an accessible and attractive format. Resources for teachers were also prepared and placed on the History Trust website. The History Trust, Parliament House and the Electoral Education Centre (Australian Electoral Commission) collaborated to promote this important anniversary especially to schools. This exhibition will close at the end of November 2007.

Research and planning for the 2008 exhibition commenced. This exhibition, which received significant grant support from the Department of Veterans' Affairs, will focus on the Vietnam War era (1962–75) and is scheduled to open in February 2008.

The mobile version of the 2004 exhibition, *An Adelaide Snapshot 1865: Townsend Duryea's Panorama*, continued to be on public display in the Drill Hall, doubling also for use as screens within the Hall.

This year three travelling displays produced by the Community History Unit toured to venues across South Australia. Nine regional and metropolitan museums contributed information and images to a travelling version of *The Voice of the People: Democracy Comes to South Australia* in order to present local stories about South Australia's electoral and political history. This display began its touring schedule in March. The touring program for *Gallipoli: the South Australian Story* was extended due to its continuing popularity, especially in months close to Anzac Day and Remembrance Day. The third travelling display, *Vote Yes: the 1967 Referendum*, was produced in partnership with Reconciliation South Australia, as part of the commemorations for the 40th anniversary of the 1967 referendum on the constitutional status of Indigenous Australians. The display was launched during Reconciliation Week in May and commenced its touring schedule in June.

### Museums Accreditation and Grants Program (MAGP)

The number of local and regional museums in the Museums Accreditation and Grants Program (MAGP) remained steady at 61 in 2006–07, while Unit staff worked with a number of other museums seeking to re-register in the Program or enter it for the first time. Close contact was maintained with MAGP museums, with 20 field trips conducted by Unit staff. The bi-monthly newsletter, *MAGP News*, continued to be an effective means to deliver advice on museum policy, collections management and interpretation; email communication also increased, with almost all regional museums now having internet access. Staff conducted six training workshops, in particular on practical issues such as housekeeping, cleaning and display supports for museums on Eyre Peninsula and in the Adelaide Hills and Mid-North.

The focus of MAGP for the year was on improving the content and delivery of regional training programs. One important initiative was the establishment of an Arts SA regional cross sector working group, formed by the History Trust, Artlab Australia, the State Library, its Public Libraries branch and Country Arts, to collaborate on the delivery of common training needs to regional libraries, galleries, archives and museums. The group jointly presented a very successful 3-day *Caring for Collections* workshop for 25 museum and gallery staff and volunteers at Goolwa. This working group also negotiated with Relationships Australia to deliver a VET Certificate IV course in Workplace Training and Assessment for Arts SA staff involved in regional training. Two Community History Unit staff attended this course, and as a consequence, reviewed the Unit's training methods and developed new programs and resources, based on a greater knowledge of adult workplace learning.

Community History Unit staff were part of an Australia-wide taskforce to develop a set of nationally-agreed standards for Australian museums and galleries. This work required considerable time and effort, with interstate meetings and lengthy teleconferences. The taskforce presented the draft set of guidelines at the Museums Australia conference in Canberra in May. The deadline for community and industry feedback was August 2007. Museums in the Trust's MAGP are well placed, because of the 2003–05 standards review, to meet these newly defined national guidelines for good museum practice.

In the 2006–07 MAGP grant round, the Trust received 52 applications from 40 museums across the State for funding totalling \$306 613. Thirty-two projects were supported, in particular those that related to the museums' strategic plans and were clearly aimed at improving museum standards. Major projects included new storage facilities at Gawler National Trust Museum and new interpretive displays at Mallala Museum, Brinkworth Historical Reserve Museum, Willunga National Trust Museum, The Sheep's Back Museum, Naracoorte, Booleroo Steam and Traction Preservation Society's museum and the Tramway Museum. The remainder were a variety of infrastructure, display, storage and collections management projects. Four conservation projects were supported through the Regional Preservation Fund, which is jointly funded with Artlab Australia.

### **South Australian History Fund**

The \$35 000 South Australian History Fund was heavily over-subscribed, attracting 58 applications, totalling \$112 938. Twenty-three applicants received funding for fifteen projects, five publications and three major research projects. Historians Bernard O'Neil and Patricia Sumerling received research grants to produce biographies of pioneer settler Johannes Menge and Albert Edwards, 'King of the West End', respectively; historian Pauline Payne received support to publish her work on botanist Richard Schomburgk and Andrew Peake received support for a new edition of his 'Sources for South Australian History'. The History Trust also supported a variety of small projects, including oral histories, digitisation of historical photographs and archival storage improvements.

---

### **Collection management**

---

Community History Unit staff assisted the Chief Executive to manage the small Directorate collection, which included processing a limited number of donations, one from Electrolux of stoves, manufactured by Simpson, an early South Australian company and another of Simpson/Electrolux dishwashers. The Unit also contributed to the History Trust Curators' Group, which included cleaning and packing SAGASCO artefacts donated to the Trust by Origin Energy. Staff also continued to work on the transfer of the Directorate collection and the Glass Negatives Collection onto the new History Trust-wide database system, KE-EMu. The digitisation project for the 14 000 images held in the Glass Negatives Collection continued this year, albeit more slowly than had been hoped initially. Volunteer John Davis continued valuable research on the history behind many of the Glass Negatives images.

In June the Community History Unit commenced a short-term consultancy for Housing SA, Department for Families & Communities, to sort and relocate its memorabilia collection. This consultancy contributed to the Unit's commitment to share its expertise and skills with other government agencies seeking to record and care for State-owned items of historical significance.

---

### **Resource management**

---

Staff attended training and professional development opportunities in a variety of areas, including digitisation, environmental monitoring for collections, interpretation, project management, collections databases, emergency salvage methods for collections, copyright and media training. Amanda James and Kate Walsh enrolled in the VET Certificate IV course in Workplace Training and Assessment and attended the Museums Australia National Conference in Canberra in May. Amanda James continued to assist the History Trust as an internal auditor for WorkCover compliance. Performance reviews were conducted in January/February 2007. Kate Walsh was a member of the assessment panel for Arts SA's Cultural Facilities Fund.

The Community History Unit acknowledges the contribution of the Trust's Marketing and Business Units in the successful and efficient delivery of its public programs.

---

## **Conclusion**

---

During the year, Community History Unit staff maintained high levels of commitment and energy to present to the public a full and exciting array of programs focused on South Australia's rich and complex history. The year's successes can be attributed to consistent and dedicated efforts by this small group of 3.7 FTE staff. In return, these programs were well patronised and supported by the history sector and the wider community.

KATE WALSH  
Manager, Community History Unit



Workshop group determining the significance of tractors at the National Dry Land Farming Centre, Kadina

# Divisional Report

## Migration Museum

*The Migration Museum opened in December 1986 as a social history museum with an innovative mission to collect, preserve, document and interpret the heritage of South Australia's immigrants. Its challenging brief has been met over its 20 years through a vibrant, creative and popular program of changing exhibitions, educational tours and special events, as well as the development of a significant collection of objects with particular strengths in documents and textiles. The Museum has worked closely with individuals and community groups to achieve its goals and is well-known and highly respected among South Australian communities. In addition the Migration Museum is a key destination for both overseas and interstate visitors.*



Mr Yu Keng & students participating in Chinese calligraphy workshops in association with the Forum exhibition by Chinese Writers Association: Literature, History, Art.

# Migration Museum

This year proved to be a dynamic one for the Migration Museum. Despite the ongoing redevelopment of the twentieth century galleries, visitor numbers increased. An exciting calendar of programs, exhibitions and events exposed many more visitors to the rich cultural and historical life of South Australia.

The popular education program was in greater demand, especially throughout the youth arts festival, *Come Out*. The Museum's international profile was further developed by its involvement in the Migration Museum's International Network. An initiative of UNESCO International Organisation for Migration, the network is an online community designed to support the activities of Migration Museums worldwide, and to facilitate interactions among them. Local community relationships were sustained through collaborative exhibitions in the popular *Forum* gallery, as well as numerous workshops and talks presented by Museum staff throughout the year.

---

## History in the community

---

As in previous years, the Museum developed exhibitions, programs and special events in conjunction with various community groups. The John McDouall Stuart Society, SA Water, South Australian Housing Trust, Association of South Australian Chinese Writers and Greek Cypriot Families all used the Museum's *Forum* gallery to present a varied program of exhibitions. Community work was further extended with the launch of the Latvian festival in January and a Polish community display in October.

The Museum's work found an audience outside the galleries, with the exhibition *They Took Our Land and then Our Children: The 1923 Ngarrindjeri Petition* travelling to Portside Christian School and Morphett Vale East Primary School. In May, the exhibition was also prominently displayed as part of the Sorry Day event, which the Museum hosted during Reconciliation Week. Panels produced as part of an exhibition last year, *Fall of Saigon: Collected Fragments of the Post-75 Generation*, were displayed in the offices of the South Australian Multicultural and Ethnic Affairs Commission.

This year saw a sustained demand for the Museum's multimedia program *Impact of Colonisation on Aboriginal People in South Australia*. Education Officer Rosa Garcia and Guide staff presented the program in Adelaide and country South Australia to a variety of groups such as the Courts Administrative Authority, Attorney Generals Department and Rural Solutions. Curators Christine Finnimore and Jill McKenzie successfully gave a number of workshops to community groups, while Director Viv Szekeres delivered a special lecture to Cultural Tourism students at Flinders University.

---

## Exhibition and public programs

---

This year Museum staff devoted a great deal of time to the exciting redevelopment of the twentieth century galleries of the permanent displays. In addition to this major project, a number of other exhibitions were presented. The year began with the continued display of the exhibition *Three Sides of the Coin*, developed by the Migration Museum with the generous support of the Health Promotion Branch, Department of Health, the Department for Families and Communities and the Department for Education and Children's Services. The exhibition confronted the issue of gambling through a number of interactive devices, including an 'opinions' board, which was extremely popular with visitors of many ages. Replacing *Three Sides of the Coin* was *Chisholm's Homes: Shaking Down the Miracle*, an exhibition of two and three dimensional art created through community and school-based workshops with artist, Flossie Peitsch.

The exhibition highlight of the year was *J'Accuse! The Dreyfus Affair*. It was officially launched in November by Hon Justice John Sulan in a poignant ceremony in which members of the Adelaide's Jewish community were invited to light candles for the third day of Chanukah (the Jewish festival of lights and of freedom). During the ceremony eight doves were released against an evocative performance of traditional Jewish folk songs played by cellist Claire Oremland from the Adelaide Symphony Orchestra. The exhibition, which was on loan from the Jewish Museum of Australia, comprised original material from The Lorraine Beitler Collection of the Dreyfus Affair, the University of Pennsylvania Library. This significant exhibition about the infamous Dreyfus Affair raised issues such as the responsibility of the press, the power of the individual versus the state and the role of the artist in society. Completing the exhibition program for the year was *Finns Down Under: a*, a collection of photographs and stories of Finnish people living in Australia, by Australian-Finnish photographer Kirsi Reinikka.

The Museum continued to draw on the strength of its innovative education programs. In addition to the highly successful core menu, exciting new programs and workshops were developed and delivered. To complement the *Forum* exhibition presented by the Association of South Australian Chinese Writers, a special Chinese calligraphy workshop was offered to school groups. Demand was such that another season of workshops is planned for late 2007. The new interactive education program *Unpacking Histories* was a smash hit of the biennial *Come Out* youth arts festival. The season was sold out and demand for this powerful program remains high.

Consistent with the demand for interactive features at the Museum, two programs were designed for use in the nineteenth century galleries. An 'empire map' was developed by the education staff and Bruce Wood from Method Media. A program that teaches Aboriginal children's string games was also developed in association with the South Australian Museum, who provided archival footage of Aboriginal elders playing string games.

---

## Collection management

---

At the end of the financial year the Migration Museum had 6 915 objects in the collection, of which 6 757 were on the new KE-EMu database. During the year 255 objects were added to the collection, thanks to the dedicated efforts of the Museum's volunteers. Items of special interest were a collection of costume, documents, photographs and objects relating to the handcrafts shop and personal life of Gladys Sym Choon. Other items of interest were: photos, documents and objects from Teodor Straders, a Ukrainian Displaced Person in World War II, items from the Spinelli knitting factory following its closure in November 2006; costume from an Iraqi refugee; and a range of personal effects belonging to the Allen and Glover families, who were early immigrants to the Colony of South Australia.

The Museum has also embarked on deaccessioning items that no longer meet its criteria for acquisition. The project will continue into the next financial year and when cleared will make a small amount of welcome room in the Netley store. The Museum has met several requests for loan material, the latest being to the South Australian Museum for an exhibition on Afghan cameleers. Sighting the collection continued, as did photographing all objects and entering them onto the database.

Preventive conservation – pest management in the galleries and at Netley, as well as environmental monitoring – has been a large part of Artlab's program for the Museum, as has the exhibition preparation of items for the redevelopment.

The most significant change in collection management was the new Trust-wide database, KE-EMu, which went live in September 2006. While there are still teething problems with some of the modules, the program allows for much greater management possibilities than did the previous database. It has already made auditing requirements easier to handle.

---

## Resource management

---

This year saw a number of changes to staffing at the Museum. Jill McKenzie joined the Migration Museum team to replace Curator Catherine Manning who left in August to travel overseas for the year. Pamela Graham returned to the Museum to job-share the role of Operations Manager with Jessamy Benger. The Museum also welcomed three new casual guides – Donna Abdulla, Lauren Simeoni and Lachlan Tetlow-Stuart.

Two interns from the Australian National University's Graduate Diploma of Arts course joined the Museum's staff for a short time, Alexis Tindall for two months and Leah Bartsch for one.

Two substantial building projects were also completed this year. Much-needed conservation work on the balcony of the lying-in hospital building was concluded, as was painting of exterior woodwork and guttering, ensuring a safer and more pleasant environment for visitors and staff. This work was made possible with the assistance of the Department of Transport, Energy and Infrastructure, Design and Heritage Management. The other project was the redesign and refurbishment of the Chapel space. This has provided the Museum with a much needed function space, attracting a new demographic of visitor and enabling an increase in events that assist in raising the profile of the Museum.

---

## Conclusion

---

Despite the challenges presented by the redevelopment of the twentieth century galleries, the Museum has continued to forge ahead and sustain its reputation as an institution that develops and promotes innovative and exciting work. This has been reflected in an expansion in the number of visitors and greater demand for education programs. Both of these factors have led to an increase in revenue, and are a testament to the dedicated and loyal team of staff and volunteers.

VIV SZEKERES  
Director

**Migration Museum** — 82 Kintore Avenue, Adelaide 5000  
Telephone: +61 8 8207 7570      Fax: +61 8 8207 7591  
Website: [www.history.sa.gov.au](http://www.history.sa.gov.au)  
Email: [migration@history.sa.gov.au](mailto:migration@history.sa.gov.au)

Admission by donation

### Guided Programs

1:00hr \$3.50

1:50hrs \$5.00

2:00hrs \$6.50

\$20.00 - \$40.00 per group for disadvantaged schools from DETE, ESL, Special Education classes

### Opening Hours

10:00am—5:00pm      Monday to Friday

1:00pm—5:00pm      Weekends and Public Holidays

Closed      Christmas Day and Good Friday

# Divisional Report

## National Motor Museum

*The National Motor Museum's reputation as the centre for Australian motoring history continues to grow – a long way from its beginnings as a small private motorcycle museum in a disused flourmill in 1965. Its acquisition by the State Government in 1976 and subsequent incorporation into the newly formed History Trust of South Australia in 1982, laid the foundation for the development of a museum of international standing and a major South Australian tourism attraction.*

*The Museum today displays over three hundred vehicles in three pavilions. It aims to present the history of the motor vehicle in Australia and the ways in which the motor vehicle has changed Australian society.*



1908 Talbot, which completed the first successful crossing of Australia from south to north in 1908.

# National Motor Museum

The National Motor Museum has continued to grow in reputation over the past 12 months with new sponsors and projects underway or completed. The Museum successfully signed Autobarn as the major sponsor for the inaugural *Birdwood Country Bash*, held on 19 November 2006. The Museum was also successful in obtaining a grant from *Visions of Australia* to develop the touring exhibition *Off the Beaten Track: A Journey Across the Nation* to be held in 2008. The exhibition will retrace the 1908 journey of Harry Dutton and Murray Aunger who completed the first successful motorised crossing of Australia from south to north in their Talbot. Outback Recovery have offered a vehicle to tow the trailer and a driver for the entire trip to Darwin.

Holden have once again agreed to the sponsorship of the National Motor Museum for the next 12 months at \$80 000, while a new long term sponsorship for the *Rock & Roll Rendezvous* has been agreed by Eastside Performance and Dyno Centre. We thank all of our sponsors most sincerely.

Arts SA have provided funding for corrective work on the Mill Building and the replacement of the VESDA fire detection system in the old pavilion. This work will begin in the new financial year.

---

## History in the community

---

During the year staff from all areas of the museum featured in numerous radio, television and print media stories dealing with the museum, motoring history and special events, in both the specialist and general press, in Australia and overseas. Kym Hulme, Allison Russell and Matthew Lombard presented talks about the museum and its programs at a number of car club nights and community events.

The Museum hosted the Australia Day Eve celebrations in conjunction with Torrens Valley Tourism. During the year we provided displays at the Adelaide Motor Show, Tour Down Under in Stirling, All Ford Day, All British Day, Toyo Show Clipsal 500, Torrens Parade Ground, Lobethal Markets, Gawler Show, Birdwood High School, Coast FM and the State Library of South Australia in conjunction with the National Treasures Exhibition. The Museum participated in *SA History Week* with volunteer Chris Bennet and Allison Russell conducting tours of the Museum on Sunday 20 May for visitors. These tours provided people with an overview of some of the highlights of the collection, and also gave visitors an opportunity to see under the bonnets of selected vehicles.

The Motor Accident Commission (MAC) Safe Driving Interactive was transported to Tasmania for AGFEST 2007 and was a great success, with over 55,500 visitors attending the event. The display received some excellent media exposure.

---

## Exhibition and public programs

---

The Museum's exhibition program has continued to change and grow under the guidance of Senior Curator Allison Russell. With *Weird Wheels* closing in August 2006 we launched *Great Journeys*, an exhibition on the pioneers of Australian Motoring and the challenges they faced. The exhibition explored some great stories of exploration and the challenges presented by technology, the environment and isolation. The next exhibition in the Museum's Drum was *Velocity: Built for Speed*, which explored the cars and motorcycles designed specifically for speed.

A new temporary exhibition space has been created in the main pavilion. The first exhibition entitled *From Workhorse to Stallion: the Ute in Australia* explored the development of utilities, from their humble beginnings in the 1930s, to the high performance vehicles of today. The next exhibition in the space, *The Jazz Age*, looked at the lifestyle of wealthy Americans in the 1920s and early 1930s through their cars. The exhibition explored the age that took its name from jazz music which was very popular at the time. This was the time when those who could afford it embraced new technologies such as cars, air travel and telephones.

During the year Senior Curator Allison Russell and Designer Simon Maloney organised a major reorganisation of the old pavilion, moving all of the temporary and permanent displays and creating a new double Club Space. Over the past 12 months we have had exhibitions from the Torana Club, Gawler Veteran and Vintage Club, Riley Club, Model T Ford Club, FE-FC Club and Adelaide Hills Motor vehicle restorers.

The Museum's Events Coordinator, Pauline Renner organised three major events at the Museum. The *Bay to Birdwood Run* was held on Sunday 24 September, the Inaugural *Birdwood Country Bash* on Sunday 19 November and the *Rock & Roll Rendezvous* on Sunday 25 February. These events together attracted over 13 500 visitors to the Museum, including new audiences.

The Museum also hosted the inaugural *Motorcycle Show and Shine* on Sunday 18 February in conjunction with the Masonic Foundation. The event has been designed to highlight men's health issues and to raise funds for research into Prostate cancer.

---

## **Collection management**

---

As part of the long term Collection Management Strategy, first developed in 2002, the Museum has focused on the ongoing management of the collection as a high priority. Museum staff continued the process of collection review and consolidation. The Museum continues to attract offers to donate vehicles from all around Australia. Such offers are the subject of intensive debate by the Museums Acquisitions Committee before any decisions are made. The historical importance of the individual vehicles is closely discussed, given the constraints of restricted storage space and the long-term costs of caring for vehicles accepted into the collection.

Those accepted this year included the very significant donation of an original 1924 Maythorn Saloon Silver Ghost (Chassis No 113AU), as well as a 1956 Armstrong Siddeley, a 1955 Chevrolet BelAir, a 1982 Ford Laser and two vehicles from the Origin Energy collection.

The Museum continued to receive, and respond to, many requests for advice and information from the public, historic motoring clubs, museums and societies. Our current system has streamlined answering enquiries and enabled the use of skilled volunteers Wolfgang Warmer, Chris Bennett, Richard Sage and Darryl Grey, rather than staff time. The National Motor Museum's library continues to expand through donations from the public. One of the Museum's volunteers Peter Stopford, continued cataloguing donations on a weekly basis.

The boiler restoration for the 1899 Shearer Steam Car is also progressing well with the assistance of Grant Kinsman from Panorama TAFE and under the guidance of staff from the museum.

---

## **Resource management**

---

There have been a few staff changes at the Museum with Designer, Simon Maloney appointed for a further 12 months to replace Mark Eckermann, who has extended his leave without pay. Museum Officer Sue Kuschert has taken 12 months leave without pay and Museum Officer Maggie Wheatly has resigned.

Six of our staff attended a training course for responsible officers under the liquor licensing act as part of our events risk management policy.

I would also like to acknowledge the ongoing support of the Museum from our sponsors, in particular Holden, Autobarn and Eastside Performance and Dyno Centre. Without them we would not be able to promote our exhibitions or events.

---

## Conclusion

---

The National Motor Museum continues as a leader in the interpretation of Australian Motoring History and will continue to build on this with a leadership role in the formation of an Australian Motor Museum Association. The past 12 months we have made significant changes in the way we display and interpret our collection. We have been playing a more active role within the community by attending more car shows and displays and promoting the museum at every opportunity. The staff and volunteers have contributed an enormous amount of time and effort with limited resources, providing an environment that our visitors enjoy.

KYM HULME  
Director

**National Motor Museum** — Shannon Street, Birdwood 5234  
Telephone: +61 8 8568 4000      Fax: +61 8 8568 5195  
Website: [www.history.sa.gov.au](http://www.history.sa.gov.au)  
Email: [motor@history.sa.gov.au](mailto:motor@history.sa.gov.au)

### Admission Charges

Adults	\$ 9.00	Concession	\$ 7.00
Children	\$ 4.00	Family	\$24.00

### Opening Hours

10:00am—5:00pm      Daily except Christmas Day

## Divisional Report

### South Australian Maritime Museum

*The South Australian Maritime Museum cares for the oldest nautical collection in Australia, a collection begun in 1872 by the Port Adelaide Nautical Institute. It has earned an international reputation amongst maritime museums and is recognised as one of the premier tourist attractions of South Australia.*

*The Maritime Museum was established in 1986 to collect, preserve, promote and interpret the State's maritime history. The Museum is spread over several sites, including the Bond Store exhibition galleries, the Port Adelaide Lighthouse, the Bank administration building, stores at Netley and Dock Two Port Adelaide and three major vessels – MV Nelcebee (1883) the oldest powered ship in Australia, police launch Archie Badenoch (1942) and steam tug Yelta (1949).*



Rex Munn is one of a number of veteran waterside workers who introduce school groups to the Maritime Museum's replica ketch *Active II*. They bring the wisdom and humour of life on the wharves to the Museum.

## South Australian Maritime Museum

It was a year in which the Maritime Museum expanded its programs at home and abroad. We launched two major touring exhibitions, sending them to national audiences with two year itineraries. We expanded our education programs with a renewed emphasis on face to face engagement in the Museum and on environmental history cruises of the Port River. We attracted new family audiences with our holiday programs, sustained our active program of changing exhibitions and developed a new exhibition for our entrance gallery.

---

### History in the community

---

The Maritime Museum values its role in the community. We developed new public programs to bring broader audiences to the Museum. We offered support to several community groups and offered free admission to open the Museum to the broadest audiences, with the kind support of our sponsor Flinders Ports.

Immigration is one of the major themes of maritime history and has been part of the Maritime Museum since it opened in 1986. This year we produced a series of new programs that built on that legacy. We presented the exhibition *Destination Australia: Ports of Immigration* from Melbourne's Immigration Museum. It focused on ports of arrival including Port Adelaide, Fremantle, Port Melbourne and Circular Quay and provided nostalgic accounts of voyages that changed the lives of generations of Australians.

We expanded the exhibition with a series of programs that included reunions for passengers who came to Australia on Sitmar Line vessels and on the P&O Line's Strath-ships. We presented a very popular genealogy fair with the support of the South Australian Genealogy and Heraldry Society, the State Library of South Australia, the National Archives of Australia and the State Records Office. The Fair provided workshops in research and a one-stop shop for those new to the field. We launched a new education program titled *Life on Board*, leading students to investigate immigrants' experiences. We also provided deck games as part of our holiday programs.

We relaunched the Museum's passenger data base which lists the names, occupations, dates of arrival and ships of 250 000 passengers who came to South Australia between 1838 and 1957. The data base is uniquely comprehensive and there are no equivalents in other states. It is a resource that touches the histories of most South Australian families. The data base has been developed by Museum volunteers and will continue to grow as photographs are added to it, along with the details of the last generation of passengers who arrived between 1958 and 1975.

The Maritime Museum presented community exhibitions from the Dale Street Women's Health Centre and the Port River Unit of Guides SA. We provided meeting facilities for local societies from the Company of Master Mariners and modellers' clubs to the National Trust of South Australia. We provided curatorial advice to historical societies and museums from Port Adelaide to Mount Gambier and the Murray River. We supported the first Port Festival, providing venues for artists and performers and the Flotilla for Kids, raising awareness of childhood cancer. The Museum developed education programs for Kangaroo Island Schools in partnership with the Whale and Dolphin Conservation Society.

In addition to our other programs, the Museum again presented two community access days, offering free admission to the exhibition galleries. Those days have continued to set records for the largest number of people visiting the Museum in a single day, reaffirming the value of the initiative and the community's interest in history.

---

## Exhibition and public programs

---

The Museum's exhibitions program has been one of the main foundations of its success and has continued to grow. During the year we launched two major travelling exhibitions that will take South Australian histories to a national audience over the next two years. *Wrecked! Tragedy and the Southern Seas* used the evocative stories of shipwrecks to illustrate themes from immigration to Aboriginal history. *Wrecked! Tragedy and the Southern Seas* took those stories along the southern coast from Port Pirie to Mount Gambier and Warrnambool. It will travel further to Canberra and Sydney in the new financial year.

*The River – Life on the Murray Darling* was produced in partnership with the Australian National Maritime Museum to explore the histories of those who worked and lived on Australia's largest river system. Indigenous communities, European explorers, farmers, paddle steamer crews, soldier settlers, irrigators, immigrants, environmentalists and tourists are all part of the history. The exhibition opened at the South Australian Maritime Museum and, for the first leg of its tour, followed the River to Morgan, Hay and Deniliquin.

We produced a new core exhibition, titled *The Mosquito Fleet*, exploring the history of the fleet of ketches and schooners that supported South Australian coastal shipping into the 1960s. Known as the mosquito fleet because of its ability to buzz across the shallow waters of the gulfs, the ketch fleet connected city with country and today embodies memories that are shared by rural and urban South Australians.

The Museum also hosted the Australian War Memorial's exhibition *Australia under Attack 1942–1943* that told eye-opening stories of attacks on coastal shipping and northern ports during World War II.

---

## Collection management

---

During the year the Maritime Museum was given an important collection of artefacts from seventeenth and eighteenth century Dutch shipwrecks, including the *Vergulde Draeck*, which was wrecked in 1656 on route to Java. Other gifts to the collection ranged from an apothecary cabinet from a steam ship and a clinker-built ski boat named *Whiz Bang IV*, that raced on the Murray River from 1959. The Friends of the South Australian Maritime Museum supported a number of important purchases for the Museum's collection including a rare iron bow crest from the steamer *Morialta*, bearing the crest of Adelaide Steamship Company.

Continued progress was made in the documentation and care of the Museum's collection and the ongoing curatorial work of the past five years has achieved very substantial results. A new collections management system was introduced to improve the documentation of the collection, on a format shared with the other museums of the History Trust.

A major challenge for the Maritime Museum is presented by the physical development of Port Adelaide, because a significant part of the Museum's collection is held in a leased store. The Museum has been given notice that the building will be demolished as part of the Port Waterfront Redevelopment and resources are yet to be secured for a replacement store.

---

## Resource management

---

The Museum owes a debt of gratitude to its sponsors. Flinders Ports' ongoing support has been critical to the success of the Museum's exhibition program and its community access days providing free admission that has opened our doors to thousands of visitors. AGL became a new sponsor of the Museum during the year, when it purchased the Torrens Island Power Station from TRUenergy and their continuation of that sponsorship agreement is greatly appreciated. The Commonwealth Department of Veterans Affairs provided funding to expand the *Navy* exhibition and the *Visions of Australia* touring program supported the touring exhibitions. External support has made the Museum's public programs and exhibitions viable and has been a foundation of our success.

Investment in capital works is needed to address the dilapidation of the Museum's heritage buildings including the 1850s bond store and the 1883 ketch Nelcebee, the oldest powered ship in Australia.

---

## Conclusion

---

Our programs have now sustained the Museum's audience above 70 000 people per annum for the last three years and that buoyancy is due to the commitment of our staff and volunteers. Continued public support for the Museum reflects growing community interest in history and heritage and the success of an active program of changing exhibitions, events and education programs.

KEVIN JONES  
Director

**South Australian Maritime Museum** — 126 Lipson Street, Port Adelaide 5015  
Telephone: + 61 8 8207 6255 Fax: + 61 8 8207 6266  
Website: [www.history.sa.gov.au](http://www.history.sa.gov.au)  
Email: [maritime@history.sa.gov.au](mailto:maritime@history.sa.gov.au)

### Admission Charges

Adults	\$ 8.50	Concession	\$ 6.50
Children	\$ 3.50	Family	\$22.00

### Opening Hours

10:00am—5:00pm Daily except Christmas Day



The Maritime Museum's holiday programs grew in popularity throughout the year

## Divisional Report

### Marketing and Sponsorship

*The Marketing Unit is based within the History Trust Directorate. It provides marketing services to all divisions of the Trust and assists in securing sponsorships. In addition, it conducts regular visitor surveys and researches tourism trends in South Australia. The History Trust's website is maintained and updated by the Unit.*



## Marketing and Sponsorship

During the 2006–07 financial year 306 257 people visited a Trust Museum or Gallery, which represents an increase of 453 (.15%) from the previous year. The Migration Museum saw an increase from 2005–2006, whilst the National Motor Museum and South Australian Maritime Museum both experienced slight decreases. The History Trust's Exhibition Space increased by 34% while patronage of the Queen's Theatre decreased slightly. Whilst the South Australian Maritime Museum's visitor numbers were slightly down on last year, it still exceeded its target visitation figure of 65 000.

Each division of the Trust had one or more travelling exhibitions tour around South Australia, as well as some interstate. A staggering 112 254 people experienced no less than 8 travelling exhibitions, all of which were financed by outside funding. This represents an increase of over 106 906 from the previous year.

Results from a Museum visitor research study were received early in the year and provided valuable baseline data. This was provided to each division and was used in the planning of marketing and other activities.

A new quarterly corporate on-line newsletter *Making History* was distributed throughout the year to the Trust's corporate and government stakeholders, including sponsors, potential sponsors, the media and funding bodies in an effort to assist in increasing the Trust's corporate profile. A new brochure requesting donations and bequests was also developed as part of a revenue generation strategy.

Marketing activity continued to focus on the Museum's changing exhibition programs, with a focus on radio advertising, due to the additional gratis air time and promotional activity that is provided. In the latter half of the year a generic ongoing advertising campaign was implemented for the National Motor Museum and this continued to build momentum. Work commenced on a new generic television commercial for the Maritime Museum and this will go to air in the 2007–08 financial year. The South Australian Maritime Museum's radio advertising focused on its changing exhibitions during school holiday periods. In addition, television advertising on Channel 9 continued as community service announcements, thanks to Channel 9's ongoing support.

Below the line marketing activity, including poster, brochure and email distribution continued, in addition to a reliance on editorial in various print media and interviews on radio and television. The significant time resources the Trust invests in gaining media editorial continues to be fruitful.

Considerable effort was also taken to ensure the Trust's website was updated continually to provide accurate information on exhibition and event programs. During the financial year, the site received 4 190 707 hits and 233 370 visits. The number of visits represents a substantial increase from the previous year of over 80 000 visits.

Channel 9 and Radio 5AA media personality Keith Conlon continued to represent the Trust as a Media Ambassador. His personal interest in the Trust and South Australian history provided an ideal profiling opportunity and the Trust thanks Keith for his ongoing support.

The increased profile of *SA History Week 2007* was a significant achievement, with over 117 print media stories/mentions, 64 radio mentions and several television stories.

## History Trust Public Programs

The exhibition *Gallipoli: The South Australian Story* continued to receive editorial coverage on radio and press throughout its final 2 months in the gallery. The Trust thanks the Returned Services League (RSL) and the *Saluting Their Service* program (DVA) for their generous support of this exhibition. The touring component of the exhibition continued to travel to regional areas of the State and generated significant local media coverage.

In late October 2006, the *The Voice of the People: Democracy Comes to South Australia* exhibition was opened. The response from the media was pleasing and covered print, radio and television. The Trust thanks the State Electoral Office for their significant support of this exhibition. The exhibition was also promoted at the *The Politics of Democracy in South Australia* conference where the travelling display was erected. Throughout the year 3 691 visitors entered the gallery which represented a significant increase of 34% over the previous year. Given the gallery's limited opening times, restricted to weekdays only, this was a pleasing result.

## SA History Week

The Marketing Unit invested a great deal of time executing another very successful advertising and promotional campaign for *SA History Week*. This greatly increased the Trust's corporate profile and the profile of South Australia's history. Channel 9 and Keith Conlon's support with the production and airing of the creative television commercial was extremely successful in attracting public attention. 891 ABC Adelaide also supported the event with on air mentions, pre, during and post the event and this was greatly appreciated. Public awareness climaxed as a result of the highly successful outside broadcast in Old Parliament House with Matthew Abraham and David Bevan promoting the event throughout the day. Messenger Community Newspapers again produced an outstanding special *SA History Week* photographic wrap-around in 10 editions of the paper, which reached many homes in metropolitan Adelaide. In addition, each paper provided significant editorial support on local events. Our thanks go to 891 ABC Adelaide and Messenger Community Newspapers for their ongoing support of *SA History Week*. Colourful programs, posters and venue signs were designed in keeping with the previous year's identity and generated interest in their own right. A full page advertisement appeared in The Australian's 'Wish' magazine which would have reached another new demographic across the State.

The program and television commercial also generated interest in the Trust's Glass Negative Collection resulting in many enquiries from the general public. Special thanks go to the Adelaide City Council for their involvement in the 'SA Open Doors' component of *SA History Week*, and The University of Adelaide and Department of Health for their significant support. Over 45 000 people experienced an *SA History Week* event over the course of the 10 day event.

## Migration Museum

A total of 160 071 visitors experienced the Migration Museum this year. This exceeded the previous year by 3.47% (+5,366).

With an extremely limited marketing budget, marketing efforts were directed towards generating free editorial from television, press and radio for the changing exhibition program and other activities at the Museum.

The *Three Sides of the Coin: Gambling in South Australia* exhibition kicked off the financial year and managed to attract a new audience to the Museum. The Museum thanks the Department of Health for supporting this exhibition. This was followed by the *Chisholm's Homes: Shaking Down a Miracle* exhibition which received limited media support. *J'Accuse! The Dreyfus Affair*, an exhibition by the Jewish Museum of Australia followed and was replaced with *Finns Down Under: a photographic record*.

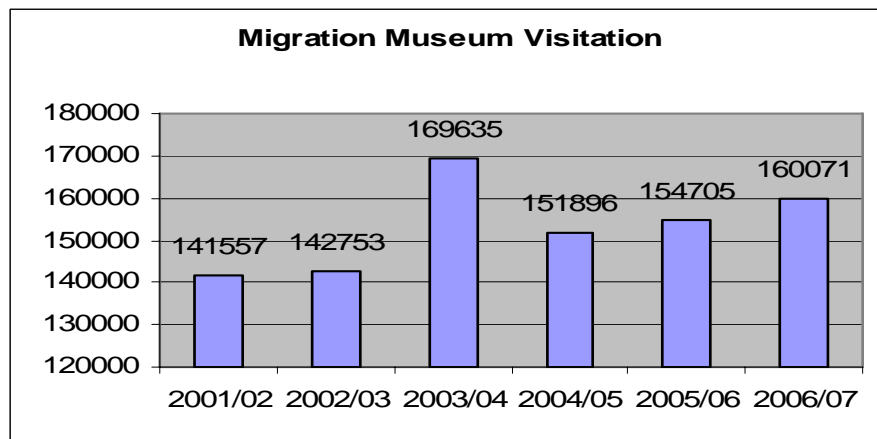
The Migration Museum would like particularly to acknowledge the support of Channel 9 for airing the Settlement Square television commercial, which not only continued to increase the Museum's public profile, but also raised funds for the Foundation.

The following community displays held in the *Forum* Community Access Gallery continued to receive positive media coverage: *Conquering a Continent*, *SA Water 150 Years*, *SA Housing Trust*, *The Cyprus Story: From Ashes to Prosperity*.

During the year, special focus was given to promoting school holiday activities to attract families with children and this also proved successful in generating media coverage.

Significant marketing time was spent planning the launch and media promotion of the Museum's redevelopment which was delayed until the next financial year. This resulted in a full page feature in *The Advertiser* on the Museum's Director and her planning of the redevelopment.

The Marketing Manager entered a submission detailing the career achievements of the Museum's Director into the Premier's Ruby Awards under the Lifetime Achievement Category.



## National Motor Museum

The financial year closed with total visitor figures reaching 62 858. This was slightly below the previous year by -3.81%.

The three major events held at the Museum, the *Bay to Birdwood Run*, the inaugural *Birdwood Country Bash* and *Rock & Roll Rendezvous*, continued to be important in maintaining visitor numbers, with 13 480 attending these events [21% of total visits]. The Museum wishes to acknowledge the major support of Autobarn Automotive Superstores for the *Birdwood Country Bash* for which it received 'presenting' rights. Health Promotions through the Arts funding was also used to fund this event. The Museum also thanks Lane Print who kindly printed posters, flyers and entry forms for the *Birdwood Country Bash* and *Rock & Roll Rendezvous* events and the other range of sponsors who provided prizes.

Significant marketing time was spent attempting to secure sponsorship for the *Rock & Roll Rendezvous* event and *Birdwood Country Bash* event. However the *Rock & Roll Rendezvous* remained without a major funding sponsor. Significant media coverage was also received at the launch of the Motor Accident Commission (MAC) Safe Driving Interactive in early July 2006. The Museum thanks the Motor Accident Commission for their ongoing support of this most popular attraction.

Through their naming rights sponsorship of the Shannons Gallery, Shannons Insurance kindly funded the remainder of the *Weird Wheels* exhibition and the Trust would like to thank Shannons for their long standing support of the Museum. This enabled the exhibition to be advertised on Channel 9, who also supported the Museum with additional air time at no cost. Radio stations MIX 102.3 and Cruise were also used to advertise the exhibition successfully.

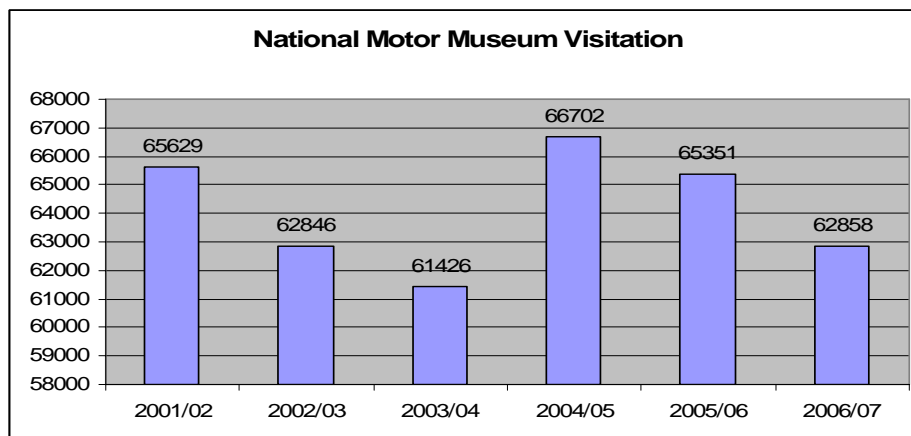
*Great Journeys* was exhibited at the Museum for a seven-month period and was advertised on radio stations MIX 102.3 and Cruise during the October school holidays period. *The Jazz Age* and *Velocity: Built for Speed* exhibitions were installed in the latter part of the year and received pleasing editorial coverage, including a feature on Channel 7's 'Discover' program.

*The Ute – From Workhorse to Stallion* exhibition and Riley Club, Model T Ford Club and FE-FC Club club displays received significant media coverage throughout their duration by the Marketing Unit working closely with car clubs in the generation of publicity about their displays and events held at the museum. This publicity continues to prove successful.

The partnership agreement with Holden Ltd continued until the end of the 2006 calendar year and was renewed in January for the 2007 calendar year. The relationship with Holden Ltd is very important to the Museum and the Trust would like to acknowledge the enormous contribution the company has made to the Museum's programs over the years. This partnership provides the majority of the marketing funds for the Museum.

During the year, special focus was given to promoting school holiday activities to attract families with children and this also proved successful in generating media coverage.

In the early part of the 2007 calendar year, generic radio advertisements were developed which featured six different cars of interest in the Museum's collection and detailed their intriguing histories. These ads ran on radio stations MIX 102.3 and Cruise continually, rather than just during school holiday periods, the objective being to build the general profile of the Museum, rather than relying on individual exhibitions to encourage visits. Due to funding limitations, the placement of these advertisements was strategically scheduled during times when listeners were listening to the radio whilst driving to and from work and required close monitoring and slight alterations to maximise their impact. The creative execution of these advertisements will be the basis for a generic television commercial to air on Channel 9, which will provide an integrated campaign.



## South Australian Maritime Museum

The financial year closed with visitor figures reaching 70 857, well above the projected target of 65,000. This represented a slight decrease from the previous year of -1.52% (-1 096 visitors).

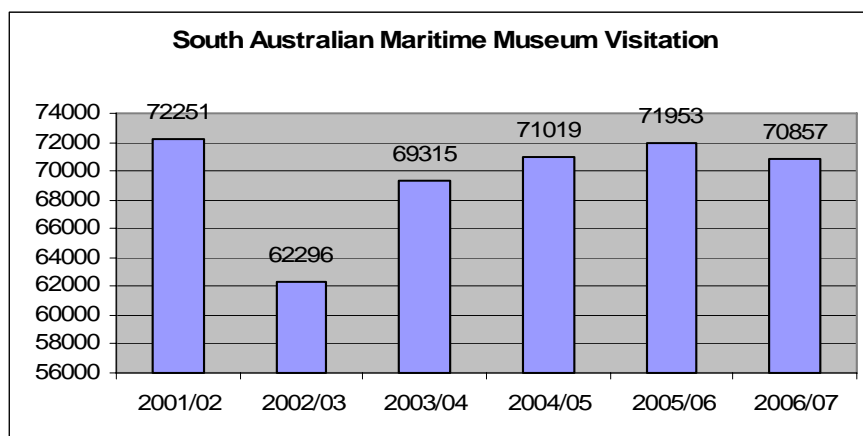
The July and January school holiday periods were extremely busy with over 7 000 visitors each month. This represents the highest monthly figures since January 2004. During July the *Australia Under Attack 1942–1943* exhibition was advertised on Channel 9 and radio stations MIX 102.3 and Cruise. These innovative advertisements featured the actual speech delivered by Prime Minister John Curtin to pull Australia's resources together to protect the country from Japanese invasion. This exhibition was a travelling exhibition from the Australian War Memorial and was funded by *Saluting Their Service*, the Federal Government's commemorations program honouring the contribution of Australia's servicemen and women.

From late October 2006 until early February 2007 *The River – Life on the Murray-Darling* exhibition was displayed and advertised on radio stations MIX 102.3 and Cruise during the January school holidays. The Museum thanks SA Water for supporting this exhibition as part of their sesquicentenary celebrations. The exhibition was developed by the South Australian Maritime Museum in collaboration with the Australian National Maritime Museum and received *Visions of Australia* funding.

*Destination Australia: Ports of Immigration* was also advertised on radio stations MIX 102.3 and Cruise during the April school holidays. This travelling exhibition was developed by the Immigration Museum, Museum Victoria and also received *Visions of Australia* funding. Whilst the significant resources invested in promoting its associated public programs, including two ship reunion days and a family history fair did not capture media interest, all three events were well patronised. The Museum thanks Health Promotions through the Arts and Flinders Ports for their support of these events. Flinders Ports also funded two community access days, enabling the Museum to offer free admission on 10 December 2006 (in commemoration of the Museum's 20th birthday) and on Sunday 17 June 2007. Messenger Newspapers also generously sponsored the free days by providing significant editorial coverage.

During the year, special focus was given to promoting school holiday activities to attract families with children and this also proved successful in generating media coverage.

We would also like to express our appreciation of TRUenergy for its ongoing support of the Museum's historic vessel, *Archie Badenoch*.



## Sponsors

The History Trust of South Australia is very grateful to our wide array of sponsors. They are the foundation for many of our programs and we could not function effectively without them.

- 891 ABC Adelaide
- Bluey's Ute World
- Adelaide City Council
- Adelaide Ute Accessories
- AGL Ltd
- Autobarn Automotive Superstores
- City of Port Adelaide Enfield
- Cruise
- Department for Environment and Heritage, Heritage Branch
- Department of Veterans' Affairs
- Department of Health
- Flinders Ports
- Friends of the Paul McGuire Maritime Library
- Gotta Getta Group
- Health Promotions through the Arts
- Holden Ltd
- Lane Print Group
- Light Force
- Lynas Ford
- Magnus
- Messenger Community Newspapers
- Mix 102.3 FM
- Motor Accident Commission
- NWS Channel 9
- Paint Supplies
- Reconciliation South Australia
- Royal Automobile Association of SA Inc (RAA)
- Returned & Services League of Australia (SA Branch)
- SA Water
- Shannons Insurance
- South Australian Tourism Commission
- Southern Bat Brewing
- State Electoral Office
- State Records
- Stienborner Holden
- TRUenergy
- The University of Adelaide
- *Visions of Australia*

KYM CHEEK  
Marketing Manager

**History Trust of South Australia** — Torrens Parade Ground, Victoria Drive, Adelaide 5000  
GPO Box 1836, Adelaide 5001  
Telephone: + 61 8 8203 9888 Fax: + 61 8 8203 9883  
Website: [www.history.sa.gov.au](http://www.history.sa.gov.au)  
Email: [staff@history.sa.gov.au](mailto:staff@history.sa.gov.au)

# Divisional Report

## Business Services

The Business Services Unit provides financial and administrative services to the organisation and operates centrally from the Directorate at the Torrens Parade Ground. The Unit also continued to focus on Occupational Health, Safety and Welfare requirements, working closely with other History Trust divisions and Arts SA.

### Queen's Theatre

Twenty-two different groups used the Queen's Theatre during the last reporting period. Diversity ranged from private functions, such as wedding and engagement parties, to corporate launches and cultural events. Concordia College students visited the theatre in September 2006 as part of 'City Week' activities.

Throughout the year the theatre continued to be used by a range of small theatre groups. In early April to the end of May 2007 the Theatre was booked for rehearsals and presentation of *The Birthday Party*, an excellent production that received great reviews with the Queen's Theatre gaining a mention in press releases.

Once again the Queen's Theatre was part of the 'Open Doors' scheme during *SA History Week* and both tours were fully booked.

As a follow up to the density testing which was carried out in the Theatre during the last reporting period, additional testing was done in June. This testing included taking core samples on one column and the adjoining truss, which showed evidence of old white ant damage. Unfortunately this damage proved more extensive than was first thought. Under instructions from the engineer Wallbridge and Gilbert the theatre was closed temporarily while repairs were undertaken. The History Trust regretted the inconvenience caused to those with cancelled bookings.

The Queen's theatre can continue to provide a flexible and cost effective option for small Theatre groups, students, non profit organisations and a diverse range of cultural events. It is hoped that once the repairs are completed, our client base will return and continue to support the Queens Theatre. A total of 7 880 people visited the Queen's Theatre site to June 2007.

---

## MANAGEMENT OF HUMAN RESOURCES

---

### Staffing – Directorate

Rebecca Rudzinski was appointed full-time Business Manager from February 2006 until Donna Tims returned from maternity leave in January 2007. From January 2007 Donna and Rebecca shared the role.

In July 2006 the Assistant Business Manager, Cherie Saunders, commenced special leave without pay for a year and Georgia Heath was appointed in her absence.

In August 2006 the Records Officer, Lisa Barca, commenced special leave without pay for a year and Linda Curran was appointed in her absence.

## Employee numbers, gender and status

<b>Persons</b>	62
----------------	----

<b>FTEs</b>	46.01
-------------	-------

<b>Gender</b>	<b>% Persons</b>	<b>% FTEs</b>
Male	29.03	32.34
Female	70.97	67.66

Number of persons separated from the agency during the 06–07 financial year	21
Number of persons recruited to the agency during the 06–07 financial year	18

Number of persons on leave without pay as at 30 June 2007	3
---	---

## Number of employees by salary bracket

<b>NUMBER OF EMPLOYEES BY SALARY BRACKET</b>			
Salary Bracket	Male	Female	Total
\$0 — \$43 999	11	23	34
\$44 000 — \$56 999	3	12	15
\$57 000 — \$72 999	1	6	7
\$73 000 — \$91 999	3	2	5
\$92 000 +	0	1	1
<b>TOTAL</b>	<b>17</b>	<b>49</b>	<b>62</b>

## Status of employees in Current Position

<b>STATUS OF EMPLOYEES IN CURRENT POSITION</b>					
<b>FTEs</b>	Ongoing	Short-Term Contract	Long-Term Contract	Other (Casual)	Total
Male	9.58	2.21	3	0.09	14.88
Female	18.18	6.78	5.3	0.87	31.13
<b>TOTAL</b>	<b>27.76</b>	<b>8.99</b>	<b>8.3</b>	<b>0.096</b>	<b>46.01</b>

<b>Persons</b>	Ongoing	Short-Term Contract	Long-Term Contract	Other (Casual)	Total
Male	11	3	3	1	18
Female	24	9	7	4	44
<b>TOTAL</b>	<b>35</b>	<b>12</b>	<b>10</b>	<b>5</b>	<b>62</b>

## Executives

<b>NUMBER OF EXECUTIVES BY GENDER, CLASSIFICATION AND STATUS IN CURRENT POSITION</b>									
Classification	Ongoing		Contract Tenured		Contract Untenured		Total		
	Male	Female	Male	Female	Male	Female	Male	Female	Total
EXEEOA	0	0	0	0	0	1	0	1	1
<b>TOTAL</b>	<b>0</b>	<b>0</b>	<b>0</b>	<b>0</b>	<b>0</b>	<b>1</b>	<b>0</b>	<b>1</b>	<b>1</b>

## Leave management

Leave Type	2003–04	2004–05	2005–06	2006–07
Sick leave	5.42	6.32	5.07	5.63
Family carer's leave	0.26	0.34	0.62	0.64
Miscellaneous Special leave	0.13	0.68	0.88	0.57

Average days taken per full-time equivalent employee.

## Workforce Diversity

The History Trust recognises the value of workforce diversity and the benefits inherent to a workforce that is representative of the community it serves.

### Workforce Diversity: Aboriginal and Torres Strait Islander employees

ABORIGINAL AND/OR TORRES STRAIT ISLANDER EMPLOYEES				
Male	Female	Total	% of Agency	Target*
0	1	0	1.62%	2.0%

\* Target from South Australia's Strategic Plan

### Workforce Diversity: Age profile

NUMBER OF EMPLOYEES BY AGE BRACKET BY GENDER					
Age Bracket	Male	Female	Total	% of Total	South Australian Workforce* Benchmark
15–19	0	0	0	0	6.7
20–24	0	2	2	3.23	10.5
25–29	0	2	2	3.23	10.2
30–34	1	6	7	11.29	9.9
35–39	4	2	6	9.68	11.2
40–44	1	11	12	19.35	11.9
45–49	4	3	7	11.29	12.3
50–54	1	7	8	12.9	11.3
55–59	3	5	8	12.9	8.6
60–64	3	3	6	9.68	5.0
65+	1	3	4	6.45	2.4
<b>TOTAL</b>	<b>18</b>	<b>44</b>	<b>62</b>	<b>100</b>	<b>100.0</b>

\* Source: Australian Bureau of Statistics Australian Demographic Statistics, Labour Force Status (ST LM8) by sex, age, state, marital status – employed – total from Feb 78 Supertable, South Australia at March 2007.

### Workforce Diversity: Cultural and linguistic diversity

CULTURAL AND LINGUISTIC DIVERSITY					
	Male	Female	Total	% of Agency	SA Community*
Number of employees born overseas	4	6	10	16.13	20.3%
Number of employees who speak language(s) other than English at home	0	0	0	0	15.5%

\* Benchmarks from ABS Publication Basic Community Profile (SA) Cat No. 2001.0

## Workforce Diversity: Disability

NUMBER OF EMPLOYEES WITH ONGOING DISABILITIES REQUIRING WORKPLACE ADAPTATION				
	Male	Female	Total	% of Agency
<b>TOTAL</b>	<b>0</b>	<b>0</b>	<b>0</b>	<b>0%</b>

## Voluntary Flexible Working Arrangements

NUMBER OF EMPLOYEES USING VOLUNTARY FLEXIBLE WORKING ARRANGEMENTS BY GENDER			
	Male	Female	Total
Purchased Leave	0	0	0
Flexitime	10	24	34
Compressed Weeks	0	0	0
Part-time Job Share	2	5	7
Working from Home	0	0	0

### Arrangement

#### Purchased Leave

### Enables an employee to ...

exchange an agreed reduction in salary in return for extra periods of leave over a specified period.

#### Flexitime

negotiate how / when hours will be worked within agreed limits.

#### Compressed Weeks

work a nine-day fortnight by working the same number of hours over nine instead of 10 working days.

#### Part time and Job Share

work less than a full time employee. The hours are usually fixed and constant. Job sharing is a voluntary arrangement where one full time job is shared between two or more people.

#### Working from Home

work from a home location instead of their usual office location.

## Performance Development

### Documented Review of Individual Performance Management

Employees with ...	% Total Workforce
A review within the past 12 months	94%
A review older than 12 months	*6%
No review	0

\*Note: Casual employees

### Documented Individual Performance Development Plan

Employees with ...	% Total Workforce
A plan set within the past 12 months	94%
A plan older than 12 months	*6%
No plan	0

\*Note: Casual employees

## Leadership and Management training expenditure

Training and Development	Total Cost \$	% of Total Salary Expenditure
Total training and development expenditure	0	0%
Total leadership and management development expenditure	0	0%

### Accredited training packages by classification

Classification	Number of Accredited Training Packages
PO-4	1 (VET Certificate IV course in workplace Training and Assessment)
PO-2	1 (VET Certificate IV course in workplace Training and Assessment)

### Equal Employment Opportunity Programs

The History Trust continued to monitor adherence to Government's Equal Employment Opportunity requirements through monthly staff and management meetings. Adherence to the History Trust's policies, Equal Opportunity Policy and Prevention of Workplace Harassment were monitored and training provided where required, particularly for the museums' volunteers. In addition, all museums considered aspects of cultural diversity in its broadest sense and access when devising annual exhibition programs. (Refer Appendix 14 for detailed listing of programs).

### Commitment to Customer Service

Positions with customer service reflected in Job and Person Specification

Positions	%
% of positions with customer service reflected in the job and person specification.	46.48
% of positions without customer service reflected in the job and person specification.	53.52

---

### Occupational Health, Safety and Injury Management

---

During 2006-07 the History Trust continued to make significant and sustained improvements to ensuring conformance with the WorkCover Performance Standards for Self Insurers and in the management of OHS&W.

Key achievements/actions for 2006-2007 included:

- OHS&W committees operational in all divisions
- Regular audits and inspections conducted in all works areas in line with the Arts SA schedule
- Manual handling training for 10 staff
- Ongoing training for employees and managers in OHS&W responsibilities
- Hepatitis B immunisation for nine staff.

## Occupational Health, Safety and Injury Management Information

		2006-07	2005-06	2004-05
<b>1</b>	<b>OHS legislative requirements</b>			
	Number of notifiable occurrences pursuant to OHS&W Regulations Division 6.6	0	1	0
	Number of notifiable injuries pursuant to OHS&W Regulations Division 6.6	0	0	0
	Number of notices served pursuant to OHS&W Act s35, s39 and s40 (default, improvement and prohibition notices)	0	0	0
<b>2</b>	<b>Injury Management legislative requirements</b>			
	Total number of employees who participated in the rehabilitation program	0	0	1
	Total number of employees rehabilitated and reassigned to alternative duties	0	0	0
	Total number of employees rehabilitated back to their original work	0	0	0
	Number of open claims as at 30 June	2	0	3
	Percentage of workers compensation expenditure over gross annual remuneration	.09	0.03	-
<b>3</b>	<b>Number of claims</b>			
	Number of new workers compensation claims in the financial year	3	1	3
	Number of fatalities, (F)	0	0	0
	lost time injuries, (LTI)	1	0	2
	medical treatment only (MTO)	2	1	1
	Total number of whole working days lost	1	2	124
		<b>2006-07</b>	<b>2005-06</b>	<b>2004-05</b>
<b>4</b>	<b>Cost of workers compensation</b>			
	Cost of <u>new</u> claims for financial year	288	366	3,485
	Cost of all claims excluding lump sum payments	288	708	22,483
	Amount paid for lump sum payments on the settlement of a claim (under the WRC Act)	-	-	-
	Future liabilities for weekly payments/medical/loss of earnings (s42)	-	-	-
	Permanent disability (s43)	-	-	-
	Lump Sum Payment on Death of Spouse/Child (s44)	-	-	-
	Amount paid for lump sum payments on the settlement of a claim (under the WRC Act) s42	0	0	50,000
	s43	0	0	24,486
	s44	0	-	
	Total amount recovered from external sources (WRC Act s54) including from a negligent third party	0	0	0
	Budget allocation for workers compensation	\$1 500	12 000	-
<b>5</b>	<b>Trends</b>			
	Injury frequency rate for new lost-time injury/disease for each million hours worked	13	13	13.9
	Most frequent cause (mechanism) of injury	Falls, slips, trips	Hits	Muscular Stress, Hits, Noise
	Most expensive cause (mechanism) of injury	Falls, slips, trips	Hits	Muscular Stress
<b>6</b>	<b>Meeting the organisation's strategic targets</b>			
<i>(Targets and results from the organisation's action plan are entered here)</i>				

---

## FINANCIAL REPORTING

---

### Financial performance

A grant of \$3 767 000 was made to the History Trust to fund some of its operations for 2006-2007. The sum included \$185 000 in specific purpose funding for the Museums Accreditation and Grants Program and South Australian History Fund, both of which are administered by the Trust. It also included \$986 000 for accommodation costs, including building maintenance and operating leases, \$105 000 for insurance and \$111 000 for Arts SA corporate service charges.

The financial outcome for the year was as projected with a net decrease in cash of \$264 000 which was for grants and sponsorships carried forward from 2005-2006 but expended in 2006-2007.

## Annual financial statements

Refer to Appendix 15 for the History Trust's Annual Financial Statements.

## Contractual arrangements

There have been no contractual arrangements.

## Account payment performance

In accordance with Treasurer's Instruction 11.

Particulars	Number of accounts paid	% of Total accounts paid (by number)	Value in \$A of accounts paid	% \$ of Total accounts paid (by value)
Paid by due date*	2 724	91.4%	\$2 645 885.70	90.2%
Paid late but paid within 30 days of due date	187	6.3%	\$175 306.11	6.0%
Paid more than 30 days from due date	70	2.3%	\$112 838.94	3.8%
<b>TOTAL ACCOUNTS PAID</b>	<b>2 981</b>	<b>100%</b>	<b>\$2 934 030.75</b>	<b>100%</b>

\*The due date is defined as per 11.7 of *Treasurer's Instruction 11 Payment of Creditors' Account*. Generally, unless there is a discount or written agreement between the public authority and the creditor, payments should be within 30 days of the date of the invoice or claim. Some agencies receive invoices significantly later than the invoice date, due to supplier invoicing processes. Agencies may choose to report against the date the invoice is first received rather than the date of invoice.

## Consultants

No consultants were engaged by the History Trust of South Australia during the year.

## Fraud

The History Trust has disclosed to the Auditor-General the results of the Trust's assessment of the risk that the financial report may be materially misstated as a result of fraud. The result of the Trust's assessment indicates that the financial statements would not be materially misstated. The History Trust has disclosed to the Auditor-General all known actual or possible non-compliance with laws and regulations, the effects of which have been considered when preparing the financial report.

## Overseas travel

Number of Employees	Destination/s	Reasons for Travel	Total Cost to Agency
1	New Zealand	To attend the National Association of Museum Exhibitors (NAME) meeting	\$1 573.14

## Reporting Against the Carers Recognition Act

The History Trust does not provide or fund direct services to carers.

## Disability Action Plans

The History Trust broadly follows the Disability Action Plan developed by Arts SA to ensure the delivery of the five outcomes listed below, within the constraints of our heritage buildings.

1. Ensure the accessibility of services to people with disabilities.
2. Ensure information about services and programs is inclusive of people with disabilities.
3. Deliver advice and services to people with disabilities with awareness and understanding of issues affecting people with disabilities.
4. Provide opportunities for consultation with people with disabilities in decision-making processes regarding service delivery and in the implementation of complaints and grievance mechanisms.
5. The Chief Executive will ensure that the History Trust has met the requirements of the *Disability Discrimination Act 1992* and the *Equal Opportunity Act 1984*.

## Urban Design Charter

Not applicable.

## Freedom of Information

The Trust received no Freedom of Information requests directly, but was asked to advise on one application managed by the Department for Environment and Heritage. This overlapped into the 2006-07 year.

## Asbestos management in government buildings

Government has adopted guidelines for asbestos management in government buildings. The History Trust of South Australia reports on its asbestos risk reduction program.

### Annual asbestos Management Report 2006-07

Categories	Number of sites		Category description	Interpretation One or more items at these sites....
	At start of year	At end of year		
1	0	0	Remove	Should be removed promptly
2	1	2	Remove as soon as practicable	Should be scheduled for removal at a practicable time.
3	2	1	Use care during maintenance	May need removal during maintenance works.
4	2	2	Monitor condition	Has asbestos present. Inspect according to legislation and policy
5	4	4	No asbestos identified / identified asbestos has been removed	(All asbestos identified as per OHS&W 4.2.10(1) has been removed)
6	0	0	Further information required	(These sites not yet categorised)

### Definitions

**Category:** The site performance score, determined by the lowest item performance score at each site.

**Number of Sites in Category:** A count of how many sites have the corresponding site performance score, with separate counts done at the start and the end of each year.

**Category Description:** Indicates the recommended action corresponding to the lowest item performance score (recorded in the asbestos register by a competent person, as per OHS&W Regulation (SA) 1995, 4.2.10)

**Interpretation:** A brief real-world example of what each category implies for a site.

## Regional Impact Assessment Statements

No Regional Impact Assessment Statements were prepared or required.

## Energy Efficiency Action Plan Reports

### Performance Against Annual Energy Use Targets

	Energy Use (GJ) <sup>1</sup>	GHG Emissions <sup>2</sup>	Business Measures <sup>6</sup>
Base Year 2000–2001 <sup>3</sup> : Agency One <b>Portfolio Total</b>	3428.00	1129	\$117 000
Year Being Reported: 2006–07 Agency One <b>Portfolio Total</b>	2772.00	691	\$93 200
<b>Portfolio Target</b> <sup>4</sup> (for Year Being Reported) 11%	3051.00	1005	\$104 100
<b>Final Portfolio Target</b> <sup>5</sup> (for 2014) 25%	2571.00	847	\$88 000

1 Energy use data will be expressed in gigajoules (GJ) and will be the sum of all fuel types used in each agency (ie electricity, natural gas, bottled gas, etc) for that period. This data will have been collected at a site level and aggregated up to agency level by the portfolio Reference Group member.

2 Many portfolios are pursuing a 'triple bottom line' reporting approach. It is therefore an optional extra that portfolios may wish to include Greenhouse Gas Emissions (in CO<sub>2</sub>) as a means of quantifying a significant aspect of environmental performance. Greenhouse gas coefficients differ for fuel types. Please contact Energy Division, Department for Transport, Energy and Infrastructure to obtain these coefficients for South Australia.

3 It is acknowledged that portfolio structures change over time. Therefore the Portfolio baseline will represent the structure of the portfolio in the given reporting period.

4 The Portfolio target for the current year is based on an agreed methodology and can be obtained through the portfolio Reference Group member.

5 The Portfolio target in 2014 should equal a 25% energy efficiency improvement from the base year 2000-01.

6 Business measures are also known as normalisation factors. A key performance indicator for energy efficiency is energy intensity, ie the energy consumed per unit of a given business measure. Some typical business measures are the number of employees (FTEs) and the square metres of floor area of a building. The energy intensity therefore becomes the energy used per unit defined by the business measures such as MJ/m<sup>2</sup> and MJ/FTE.

## Greening Of Government Operations (GoGo) Framework

The History Trust of South Australia is currently developing an Environmental Management Plan.

In addition, the Trust maintains its commitment to energy efficiency supported by all History Trust staff in seeking and implementing a wide range of general housekeeping initiatives to minimise energy usage.

---

## OTHER MATTERS REQUIRED BY THE PREMIER

---

### Future Gender Reporting

The History Trust has a long-term commitment to considering the gendered nature of history in planning exhibitions, publications and other public programs. Individual research projects also include a gendered perspective.

### Sustainability Reporting

The History Trust of South Australia is currently developing an Environmental Management Plan which includes reviewing waste management, energy and water consumption at our museums.



## Reconciliation Statement

The History Trust continued to implement its 2006–09 Business Plan, which included a range of initiatives relevant to Reconciliation:

- The Migration Museum's refurbished galleries have a strong Indigenous history theme.
- The Migration Museum continued to offer *Impact of Settlement*, their cultural awareness–historical program, to a range of Government agencies and schools. This program is now in strong demand from agencies, both within the South Australian public sector and externally, to increase understanding of Indigenous history in the State.
- The Migration Museum continued to work with Indigenous groups in planning the re-development of the permanent galleries.
- The Migration Museum developed a travelling interpretive exhibition for the Department of Premier and Cabinet on the 1923 Ngarrindjeri Petition in collaboration with members of the community in 2004-05. This exhibition continued to tour in 2006-07.
- The Trust continued to work with all registered and accredited museums in the State to include recognition of Aboriginal land as a component of registration. The Trust also continued to encourage community museums to work collaboratively with local Indigenous communities.
- The Trust also asks all museums registered under the Museums Accreditation and Grants Program to acknowledge the Indigenous owners and custodians of the land their museums and communities are sited on.
- The Migration Museum worked with the Sorry Day Committee.
- The History Trust's current exhibition, *The Voice of the People: Democracy Comes to South Australia*, includes an Indigenous perspective. The travelling display touring regional South Australia, *Gallipoli: The South Australian Story* includes reference to Indigenous Anzacs.
- *SA History Week 2007*. Reconciliation South Australia participated in *SA History Week*. The events they listed were the Reconciliation public rally and March on 27 May, the launch of a display at the South Australian Museum and the fortieth anniversary commemorations marking the 1967 referendum at Elder Park on 27 May.
- In partnership with Reconciliation South Australia, the History Trust developed a travelling display, *Vote Yes: the 1967 Referendum*. This travelling display was launched at the Elder Park event on 27 May and then commenced its 2007–08 metropolitan and regional touring schedule. To the end of June 2007, *Vote Yes: the 1967 Referendum* had been on display at Tauondi College, Port Adelaide and three venues within the City of Onkaparinga (Noarlunga, Aldinga and Aberfoyle Park).
- The History Trust acknowledges the Kurna People as the Indigenous owners and custodians of the Adelaide Plains at the entrance to the Exhibition Gallery, Torrens Parade Ground.
- Tours of the Port River aboard the Maritime Museum's launch *Archie Badenoch* were presented in association with Tauondi College. The tours were led by Kurna elders from 22 to 28 April 2007.
- *The River: Life on the Murray Darling*, an exhibition that explored the social history of the Murray River, included the experiences and views of Indigenous people living beside the River. It was presented from 27 October 2006 to 4 February 2007 at the Maritime Museum.

DONNA TIMS AND REBECCA RUDZINSKI  
Business Managers

**History Trust of South Australia** — Torrens Parade Ground, Victoria Drive, Adelaide 5000

GPO Box 1836, Adelaide 5001

Telephone: + 61 8 8203 9888

Fax: +61 8 8203 9883

Website: [www.history.sa.gov.au](http://www.history.sa.gov.au)

Email: [staff@history.sa.gov.au](mailto:staff@history.sa.gov.au)

TWENTY SEVENTH ANNUAL REPORT

OF THE

HISTORY TRUST  
of  
SOUTH AUSTRALIA

FOR THE

YEAR ENDED 30 JUNE 2007

**APPENDICES**

## **1. Board of Trustees**

---

Phillip Broderick, LL.B (*Chair*)

Margaret Allen, BA (Hons), DipEd, MA (History), MA (Social History), PhD

Alison Mackinnon, PhD, MEd, DipEd (Advanced) DipEd, BA

Susan Magarey, AM BA (Hons), MA, PhD, FASSA

Bryan Moulds, BA (Planning), CTech

Minerva Nasser-Eddine, BA (Hons), MA, PhD, GDipBusEnt

Philip Satchell, AM

At 30 June 2007 the History Trust Board had one vacancy.

## **2. Management Personnel**

---

Margaret Anderson, BA (Hons), MA, DipEd Chief Executive

Kym Cheek, BA Comm Manager, Marketing

Kym Hulme Manager, National Motor Museum

Kevin Jones, BA (Hons), Grad Dip Mus Stud Director, South Australian Maritime Museum

Vivienne Szekeres, BA (Hons), BEd Director, Migration Museum

Donna Tims Manager, Business Unit

Rebecca Rudzinski Manager, Business Unit

Kate Walsh, BA (Hons), DipEd Manager, Community History Unit

### 3. Staff as at 30 June 2006

---

#### Directorate

Margaret Anderson, Chief Executive  
Suzanne Ball, Administrative Officer  
Kym Cheek, Marketing Manager  
Linda Curran, Administrative Officer  
Georgia Heath, Administrative Officer

Anna Ragosa, Chief Executive's Secretary  
Rebecca Rudzinski, Business Manager  
Joylyne Teh, Human Resources Officer  
Lee Tillett, Marketing Officer  
Donna Tims, Business Manager

#### Community History Unit

Kate Walsh, Manager  
Theresa Cockburn, Administrative Officer  
Lynn Drew, Information Resources Manager

Amanda James, Community History Officer  
Jan Mudge, Public Programs Officer  
Mandy Paul, Curator

#### Migration Museum

Viv Szekeres, Director  
Donna Abdulla, Casual Guide  
Marg Degotardi, Designer  
Christine Finnimore, Senior Curator  
Elizabeth Galatsanos, Guide  
\*Rosa Garcia, Education Officer  
Pamela Graham, Operations Manager  
Kath Inglis, Guide  
Anna Linarello, Casual Guide

Jill MacKenzie, Curator  
Lata Mayer, Guide  
Sue Milln, Guide  
Suzanne Redman, Administrative Officer  
Deidre Robb, Guide  
Lauren Simeoni, Casual Guide  
Pat Stretton, Guide  
Lachlan Tetlow-Stuart, Casual Guide

\* Seconded from the Open Access College of the Department of Education and Children's Services (DECS)

#### National Motor Museum

Kym Hulme, Director  
Janet Alexander, Museum Officer  
Andrew Applebee, Museum Officer  
Caroline Barnett, Museum Officer  
Bruno Davids, Administrative Officer  
Kathy Edelbauer, Facilities Officer  
Steve Farrer, Museum Officer  
Immanuel Hansen, Curatorial Officer-Mechanic  
Ian Hay, Coachbuilder

Brett Knuckey, Museum Officer  
Sue Kuschert, Museum Officer  
Matthew Lombard, Curator  
Simon Maloney, Designer  
Keith Norrish, Groundsperson  
Allison Russell, Senior Curator  
Pauline Renner, Events Coordinator  
Kerry Smart, Museum Officer  
Sue Wheeler, Business Manager

#### South Australian Maritime Museum

Kevin Jones, Director  
Tineke Adolphus, Museum Officer  
Rebecca Baker, Administrative Officer  
Rolf Christiansen, Museum Officer  
Kristy Dermody, Curator  
\*Mandi Dimitriadis, Education Officer  
Venetia Gillot, Museum Officer  
Jeff Hill, Museum Officer

Robert Holme, Fleet and Volunteer Coordinator  
Eddy Knight, Museum Officer  
Judy Laidler, Museum Officer  
Rob Lincoln, Museum Officer  
Patricia Mathieson, Administrative Officer  
Bill Seager, Senior Curator  
Joan Simpson, Operations Manager  
Asa Wassberg, Administrative Officer

\* Seconded from the Open Access College of the Department of Education, Training and Employment (DETE)

#### **4. Advisory Committees**

---

##### **National Motor Museum Development Committee**

Mr Graham Ericson	Strategic Business Alliance
Mr Bob Gell	Operations Commercial Manager, Royal Automobile Association
Mr Malcolm MacDowell	Volunteer representative
Mr Chris Ward	Bank SA

#### **5. Honorary Consultants/Valuers**

---

<b>Weapons Curator</b>	Mr Lee Blair-Jenke (Migration Museum)
<b>Rail Heritage Collections</b>	Mr Frank McDonnell (Directorate)

#### **6. Migration Museum Foundation Committee Members**

---

Chair	Mr Alec Khoo
Treasurer	Mr Raymond G Tuckfield
Secretary	Pamela Graham
Members	Mr Randolph Alwis
	Councillor Judith Brine
	Mr Alex Gardini
	Mr Daniel Mitroussidis
	Ms Minerva Nasser-Eddine
	The Hon Julian Stefani, OAM MLC
	Mr Bruce Soar
	Ms Andrea Stylianou
	Ms Viv Szekeres

## 7. Volunteer Services

---

The History Trust is extremely grateful for the services of a large number of volunteers. We could not manage our museums, special events and collections without them and thank them most sincerely for their continuing work on our behalf. The volunteers contributed an estimated 15 843 hours to the History Trust in 2006–07.

### Directorate/Community History Unit

Karen Blackwood

Mike Brown

John Davis

Jan Fisher

### Migration Museum

Paul Beresford

Pamela Griffiths

Beth Jeffries

Alexis Tindall

Emily Bower

Tony Harris

David Rickard

Susan Woodburn

Val Darby

Barbara Holbourn

Pauline Rickard

Julie Zerella

Glenys Edwards

Maureen Holbrook

Meryl Thompson

### National Motor Museum

Brian Barber

Roy Feather

Ross Hoare

Kevin Osborne

Geoff Beatty

Martin Finn

Mark Holt

Des Pudney

Valerie Beatty

Peter Flaherty

Andrew Hunt

Dave Richardson

Chris Bennett

Barbara Flaum

Robert Hutchinson

Raelene Richter

Danny Buxallen

Leith Franklin

Danny Kay

Richard Sage

Frank Carey

Terry Franklin

Donald Kay

John Schwartz

Arthur Clisby

Bill Gallagher

Graham Keen

Jenny Simmons

Nola Clisby

Francis Georg

Bob Keynes

Peter Stopford

Geoff Coat

Thomas Georg

Brett Knuckey

Ivan Sutton

Carina Daly

Geoffrey Glynn-Roe

David Manson

Jim Thompson

Raelene Day

Darryl Grey

Carolyn Mason

Graham Tomlinson

Jamie Denton

Lorraine Harris

Lindsay Mason

Abbey Van Manen

Lynton Denton

Wayne Harris

Malcolm McDowell

John Van Manen

Janet Egan

John Henderson

Aylene Mueller

Mal Wade

Colin Emmett

Derek Hidden

Richard Neaylon

Wolfgang Warmer

### South Australian Maritime Museum

Paul Aylmore

Ray Elvin

Gordon Lindsley

Chris Richards

Paul Baker

Graham Evans

Don Lucas

Dave Rickard

Ron Barnes

Michael Finn

Andrew Mangnoson

Keith Ridgeway

Yensie Barnes

Keith Ford

Ellis Mathews

Judy Reinich

Fritz Bonner

Harry Goodall

Rick Mathews

Michael Sedlmayer

Alan Bowman

Cyril Haire

Robyn Mathews

David Smillie

Rick Brook

John Hall

Carol Mitchell

Fred Smith

Allan Campbell

Graeme Hammer

Marjorie Morris

Wayne Smith

Chris Cann

Neil Hepburn

Rex Munn

Bill Sweeting

Tony Croose

John Hornby

Peter Nearmy

Peter Walls

Nikki Crowther

Trevor Hoskin

Hiep Nguyen

Chris White

Colin Day

Michael Keane

Marion Osborne

Ian Wood

Henry Doherty

John Kempton

Mike Parsons

Marguerite Workman

John Drage

John Lawrence

Jim Paul

Bill Yeo

Ernie Edwards

Jeff Levett

Jan Perry

## 8. Key Performance Indicators 2006–2007

	2003–04	2004–05	2005–06	2006–07
<b>Access by the South Australian Community to the State's Cultural Heritage</b>				
Visitor numbers for Trust Museums (total)	303 906	303 453	305 804	306 257
travelling exhibitions (outward) visitor numbers (total)	10 000	40 000	5 348	112 254
School numbers (total)	32 717	35 829	39 801	40 866
Travelling exhibitions – outward	2	2	3	8
Number of community organisations assisted	#1 322	399	455	355
Number of enquiries	#16 530	14 488	14 266	12 607
<b>Financial Performance</b>				
Revenue generated				
admissions	\$522 000	\$582 000	\$581 802	587 954
functions/facilities hire	\$83 000	\$66 000	\$64 192	58 112
book/gift shops	\$189 000	\$191 000	\$190 855	194 938
grants	\$0	\$50 000	\$119 000	\$210 709
donations	\$23 000	\$29 000	\$50 496	22 283
sponsorship    ✧ cash	\$359 000	\$292 000	\$434 900	\$175 412
other income	\$372 000	\$740 000	\$104 754	24 242
Number of volunteers on books at 30 June	149	120	125	138
and the estimated person hours contributed for the year	14 717	13 290	13 992	15 843

# The Trust's performance indicators were reviewed and reduced in 2002 in line with the Performance Agreement with Arts SA. Methods of counting some indicators (notably organisations assisted and enquiries) were reviewed, which accounts for the apparent variations in these figures.

## 9. Grants Obtained

### Directorate

\$50 000	Department of Veterans' Affairs. For a Vietnam War era exhibition. Opening February 2008
\$10 909	Reconciliation SA. For the <i>Vote Yes: the 1967 Referendum</i> travelling exhibition
\$30 000	Health Promotion for the Arts.
\$40 000	Department for Environment and Heritage. For <i>SA History Week</i> 2008 and 2009
\$ 7 800	Housing Trust Consultancy.

### National Motor Museum

\$39 000	<i>Visions of Australia</i> development grant. To develop the Museum's touring exhibition <i>Off the Beaten Track: A Journey Across the Nation</i> to be held in 2008.
----------	--

### South Australian Maritime Museum

\$30 000	Commonwealth Department of Veterans' Affairs. To support the production of a short film exploring the history of the Royal Australian Navy in the Vietnam War
\$3 000	City of Port Adelaide Enfield Major Events. To support the public programs related to the exhibition <i>Destination Australia: Ports of Immigration</i> .

## 10. Publications

---

- Drew, L (ed)                      *History Matters*. 3 issues per year
- Walsh, K and James, A        *MAGP News*. Six bi-monthly issues for distribution to museums registered and accredited in the Museums Accreditation and Grants Program
- Szekeres, V                      'New Protocols: Dialogues Across Cultures'. Museums and Galleries NSW regional conference in Wagga on 11 November 2005. The Gordon Darling Foundation is supporting a publication of this paper.

## 11. Unpublished Conference Papers

---

- Anderson, M                      'Private Vickery's War and Peace'. History Trust of South Australia Special Conference, The Great War and its Aftermath: South Australia 1914-1928. 4 August 2006
- Paul, M                              'The 'blood vote': enfranchising soldiers, sailors and nurses in 1918'. History Trust of South Australia Special Conference, The Great War and its Aftermath: South Australia 1914-1928. 4 August 2006
- Szekeres, V                      'Out of the Limelight: The League of Women Voters at the Time of the Great War'. History Trust of South Australia Special conference, The Great War and its Aftermath: South Australia 1914-1928. 4 August 2006

## 12. Museums Accreditation and Grants Program

---

The following 61 museums are currently registered or accredited in the Program.

### Registered museums as at 30 June 2006

Adelaide Masonic Centre Museum	Mallee Tourist and Heritage Centre, Pinnaroo
Ardrossan National Trust Museum	Mannum Dock Museum
Army Museum of South Australia, Keswick	Mary MacKillop Penola Centre
Axel Stenross Maritime Museum, Port Lincoln	Moonta Mines Museum
Barmera National Trust Museum, Cobdogla	Mount Gambier Branch National Trust
Barossa Valley Archives and Historical Trust Museum, Tanunda	Mount Laura Homestead Museum, Whyalla
Booleroo Steam and Traction Preservation Society	Norwood History Centre
Brinkworth History Group	Old Highercombe Hotel Folk Museum, Tea Tree Gully
Burra Burra Branch National Trust	Old Wool and Grain Store Museum, Beachport and District Branch National Trust
Charles Sturt Memorial Museum Trust, Grange	Penneshaw Maritime and Folk Museum
Clayton Farm Heritage Museum, Bordertown	Polish Hill River Church Museum, Sevenhill
Crystal Brook Heritage Centre	Port MacDonnell Maritime Museum
Eyre Peninsula Railway Preservation Society, Port Lincoln	Port Pirie National Trust Museum
Farm Shed Museum, Kadina National Trust	Port Victoria Maritime Museum
Friedensberg Historic German School Museum, Springton	Prospect Hill Historical Museum
Gawler National Trust Museum	Radium Hill Heritage Museum
Goolwa National Trust Museum	Scholz Park Museum, Riverton
The Hahndorf Academy	South Australian Police Historical Society Inc, Thebarton
Kimba and Gawler Ranges Historical Society	Stansbury Museum
Kingston National Trust Museum	Strathalbyn National Trust Museum
Koppio Smithy Museum	Swan Reach Museum
Lameroo and District Historical Society	Uleybury School Museum, One Tree Hill
Latvian Museum, Wayville	Urrbrae House Historic Precinct, Urrbrae
Lock and Districts Heritage Museum	Wallaroo Heritage and Nautical Museum
Loxton Historical Village	Whyalla Maritime Museum
Maitland National Trust Museum	Willunga Courthouse Museum
Mallala and Districts Historical Society	

### Accredited museums as at 30 June 2006

Australian Electric Transport Museum, St Kilda (Tramway Museum)  
Ayers House Museum  
Embroiderers' Guild Museum, Mile End  
Melrose Courthouse Museum  
Millicent National Trust Museum  
The Sheep's Back Museum, Naracoorte National Trust  
South Australian Aviation Museum, Port Adelaide  
Unley Museum

## 12. Museums Accreditation and Grants Program (cont.)

### Allocation of grants

Museums need to be accredited or registered with the History Trust to be eligible for Museums Accreditation and Grants Program funding.

There was \$150 000 available for allocation this year. The grants listed are exclusive of GST. The assessment committee comprised Margaret Anderson, Chief Executive History Trust, Kate Walsh, Manager, Community History Unit, Amanda James, Community History Officer, Ann Herraman, Mount Lofty and District Historical Society, and Kathy Gargett, State Records. Applications from National Trust Branches were also reviewed by Hannah Phillip, Manager of Ayers House Museum.

There were 52 applications from 40 museums. Total funding requested was \$306 613.62. A wide variety of grants was approved, including major exhibition projects, collection conservation and storage projects. There was a good regional spread of grants across the state.

Museum	Project	Grant \$
Army Museum of South Australia	Develop a series of story boards to complement indoor displays	1 500
Australian Electric Transport Museum	Improve and update interpretive displays and signage in visitor reception and outdoor areas	9 000
Axel Stenross Maritime Museum	Upgrade selected interpretive display panels	1 500
Beachport National Trust Museum	Engage a designer to work on the display project 'The Buandik Story - story of the Buandi people of South East of SA since white settlement'	3 370
Beachport National Trust Museum	Set up collection storeroom	3 000
Booleroo Steam & Traction Preservation Society	Construct interpretive displays and fixtures in museum foyer	14 000
Brinkworth Historical Reserve Museum	Undertake 'Religion in Regional South Australia' museum re-development project - stage two	5 500
Embroiderers' Guild Museum	Conservation of significant early 20th century embroidered portiere	660
Eyre Peninsula Railway Preservation Society	Reproduce as an interpretive panel a 1930s map of the Eyre Peninsula Railway Line	3 500
Gawler National Trust Museum	Build a collection store and workroom, including lining, insulation and security	12 600
Goolwa National Trust Museum	Commence cataloguing museum and archive collection	3 000
Kimba & Gawler Ranges Historical Society Museum	Photocopy and store original local business calendars	300
Koppio Smithy National Trust Museum	Establish a disaster bin	200
Koppio Smithy National Trust Museum	Purchase archival products and store photographs, documents and costumes	500
Mallala Museum	Develop the display 'A Time of Conflict' in the old mill gallery space	12 292
Melrose Courthouse Heritage Centre	Upgrade computers used for collection management	3 840
Moonta Mines Museum	Purchase shelving for new collection storeroom	2 000
Moonta Mines Museum	Employ a cataloguer to transfer collection records to Mosaic database	3 000
Mount Gambier National Trust (Old Courthouse)	Develop the project 'Having your Day in Court' about the history of use of the courthouse	4 000
Mount Laura Homestead Museum	Engage Artlab to undertake a preservation survey	1 330
Penneshaw Maritime & Folk Museum	Engage consultants to undertake a significance assessment of the collections	3 650
Scholz Park Museum	Engage consultants to develop a design and concept plan for the project 'Scholz family - Their Stories Unveiled'	6 000
South Australian Aviation Museum	Engage designer to develop a concept display plan for the museum	4 500
South Australian Police Museum	Purchase computer hardware and software and migrate data from existing database to Mosaic	3 373
Strathalbyn National Trust Museum	Upgrade interpretation of agricultural displays	4 000
Swan Reach & District Museum	Develop a design concept plan for display re-developments	5 000
The Farm Shed Museum & Tourist Centre	Develop the display 'Farm Children - In the Farmyard'	5 000
The Sheep's Back Museum	Develop text panels for 'Click go the Years' gallery and complete small objects display	9 000
The Sheep's Back Museum	Co-ordinate machinery conservation workshop	250
Urrbrae House Historic Precinct	Engage Artlab to undertake a preservation survey	770
Wallaroo Heritage & Nautical Museum	Complete conservation of 1910 Wallaroo Waterside Workers Federation banner	10 000
Willunga Branch, National Trust of SA	Develop Willunga Slate Museum: Heavy Hauling/Blacksmith display	13 365
	<b>TOTAL</b>	<b>\$150 000</b>

### 13. South Australian History Fund

The South Australian History Fund (SAHF) aims to meet a pressing need for financial assistance to individual authors and organisations to help research and publish works of non-fiction relating to South Australian history. The fund also assists South Australia's history sector, which includes historical societies, museums and community organisations, to undertake projects to preserve and present their community history.

In 2006-07 research grants were offered for the third time since they were introduced for a trial period of three years in 2004-05. The South Australian History Fund Research Grants support major research projects that will culminate in significant publications of South Australian history.

There was \$35 000 available for distribution in 2006-07. The Trust received 58 applications totalling \$112 939.

The assessment committee comprised Margaret Anderson, Chief Executive, History Trust, Kate Walsh, Manager, Community History Unit and independent assessors June Edwards, Collection Development Archivist, State Library of South Australia, and Peter Cahalan, Manager Interpretive Programs, South Australian Tourism Commission.

Applicant	Project type	Project	Grant \$
Adelaide Liedertafel 1858	Project	Collect, preserve and store historically significant Adelaide Liedertafel items	1 000
Andrew Peake	Publication	Produce an expanded edition of 'Sources for South Australian History', first published in 1998	1,500
Bernard O'Neil	Research	Prepare a biography of Johannes Menge (1788-1852), SA pioneer settler	5 000
Brinkworth Historical Reserve Museum	Project	Copy and store photographs collected as part of the Museum's exhibition 'Beaus and Belles of Brinkworth and Districts'	1 000
City of Salisbury Library Service	Project	Undertake oral history project 'Past, Present and Future: a tale of two communities'	1 000
Clare Regional History Group	Project	Purchase microform scanner and printer to enable access to historical data held in collection	1 000
de Lissa Association of Early Childhood Graduates	Project	Undertake transcription of oral history interviews	1 000
Pauline Payne	Publication	Produce book length biography of Dr Richard Schomburgk, explorer, gardener and botanist	3 000
Thomas Darragh	Research	Construct an inventory and transcribe and translate the collection of correspondence relating to Friedrich Krichauff, a prominent SA politician	2 550
Dublin History Group	Project	Correctly store collection of historic photographs, documents and other printed materials	450
Filipino Australian Heritage Society	Project	Undertake oral history interviews with Filipino migrants to South Australia	1 000
Friends of Old Government House	Publication	Publish a short history of Old Government House, Belair	1 000
Historical Society of SA	Publication	Publish volume 34 of the Journal of the Historical Society of South Australia	2 000
Malcolm McKinnon and Reg Dodd	Publication	'Growing up Two Ways' multi-media project about life at Finnis Springs Aboriginal Mission	1 500
Meadows 150 Steering Committee	Project	Undertake oral history interviews with past and present residents of Meadows	1 000
Mitcham Local History Service	Project	Develop a commemorative and interpretive picnic table to be placed in a Council reserve	1 000
Molinara Social and Sports Club Inc	Project	Collect, digitise and classify immigration and settlement related photographs and documents relating to immigrants from Molinara	1 000
Organ Historical Trust of Australia	Project	Research and restoration of 1875 Hill & Son Grand Organ soundboards and windchests	1 000
Patricia Sumerling	Research	Research and produce a biography of the life of Albert Augustine Edwards the 'King of the West End'	5 000
Peterborough History Group SA	Project	Purchase archival products for storage of historic photographs, documents and newspapers	500
South Australian Genealogy & Heraldry Society	Project	Prepare a of listing of Irish born people who came to South Australia up until 1885 and make it available in digital format	1 000
St Mark's College	Project	Purchase archival quality storage albums to house original photographs	1 000
Uniting Church (SA Synod) Historical Society	Project	Purchase appropriate boxes for storage of paper and object collection items	500
<b>Total</b>			<b>\$ 35 000</b>

## 14. Exhibition Program

### Community Access

<p><b>Migration Museum The Forum</b> The Forum is available for community groups to mount exhibitions about their own history and experience.</p>	<p><b><i>Conquering the Continent.</i></b> John McDouall Stuart Society. 3 June – 28 August 2006</p> <p><b><i>SA Water Workforce.</i></b> SA Water. 2 September – 29 November 2006</p> <p><b><i>The SA Housing Trust: Our Contribution – Past, Present &amp; Future.</i></b> SA Housing Trust. 3 December 2006 – 28 February 2007</p> <p><b><i>Chinese Writers Association: Literature, History, Art.</i></b> Association of SA Chinese Writers. 1 March – 31 May 2007</p> <p><b><i>The Cyprus Story: From Ashes to Prosperity.</i></b> Greek Cypriot Families. 8 June – 29 August 2007</p>
<p><b>National Motor Museum Club Space I and II</b> Museum initiative to give motoring clubs a forum to display club member vehicles and promote their club activities.</p> <p>Note: Club Space closed for redevelopment and the addition of a second space.</p>	<p>Torana Car Club. 15 July 2006</p> <p>Gawler Veteran and Vintage Club. 16 July – 14 October 2006</p> <p>Riley Club. 15 October – 13 January 2007</p> <p>Model T Ford Club. 14 January – 14 April 2007</p> <p>FE-FC Club. 15 July – 13 October 2006</p>
<p><b>South Australian Maritime Museum Black Diamond Corner</b> A community access space</p>	<p><b><i>Plus Connections: Dale Street Women's Story Wall.</i></b> Dale Street Women's Health Centre 1 July – 30 September 2006</p> <p><b><i>Guides SA: GTS Dolphin.</i></b> Port River Guides Unit. 1 October – 23 February 2007</p>

### New Permanent Exhibitions

<p><b>Migration Museum</b></p>	<p>Immigration and Settlement in the Nineteenth Century.</p>
<p><b>History Trust Exhibition Gallery</b></p>	<p><b><i>An Adelaide Snapshot 1865: Townsend Duryea's Panorama.</i></b> Mobile display in the Drill Hall, Torrens Parade Ground. Ongoing.</p>
<p><b>South Australian Maritime Museum</b></p>	<p><b><i>The Mosquito Fleet.</i></b> 30 November 2006 – continuing.</p>

## 14. Exhibition Program (cont.)

---

### Temporary Exhibitions – In-house

History Trust Exhibition Gallery	<p><b>Gallipoli: The South Australian Story.</b> Closed 31 August 2006</p> <p><b>The Voice of the People: Democracy Comes to South Australia.</b> 24 October 2006 – 30 November 2007</p>
Migration Museum	<p><b>Three Sides of the Coin: Gambling in Australia.</b> The Gambling Awareness Unit of the Department of Health, the Health Promotions Unit and Department of Education and Community Services. 7 April – 9 October 2006</p>
National Motor Museum	<p><b>Weird Wheels.</b> To 14 August 2006</p> <p><b>Great Journeys.</b> September 2006 – April 2007</p> <p><b>Velocity: Built for Speed.</b> May 2007 – ongoing</p> <p><b>From Workhorse to Stallion: the Ute in Australia.</b> November 2006 – May 2007.</p> <p><b>The Jazz Age.</b> May 2007</p>
South Australian Maritime Museum	<p><b>The River – Life on the Murray–Darling.</b> 27 October 2006 – 4 February 2007</p>

### Touring Exhibitions – Incoming

Migration Museum	<p><b>Chisholm's Homes: Shaking Down a Miracle.</b> This is an exhibition of 2D and 3D art created through community and school-based workshops with Project Director and Artist, Flossie Peitsch. 17 October – 11 December 2006</p> <p><b>J'accuse! The Dreyfus Affair.</b> The Dreyfus Affair raises issues such as the responsibility of the press, the power of the individual versus the state, the role of the artist and intellectual society and the use of racism as a political ploy by a government in power. This exhibition is from the Jewish Museum of Australia, Gandel Centre of Judaica, comprising original material from the Lorraine Beitler Collection of the Dreyfus Affair, University of Pennsylvania Library. 18 December – 29 March 2007</p> <p><b>Finns Down Under: a photographic record.</b> A collection of photographs and stories of Finnish people living in Australia, by Australian-Finnish photographer Kirsi Reinikka. 6 April – 27 August 2007</p>
SA Maritime Museum	<p><b>Australia under Attack 1942–1943.</b> 30 June – 15 October 2006 Australian War Memorial's exhibition.</p> <p><b>Destination Australia: Ports of Immigration.</b> 14 February – 24 June 2007. From Melbourne Immigration Museum.</p>

## 14. Exhibition Program (cont.)

---

### Touring Exhibitions – Outgoing

<b>History Trust of South Australia</b>	<p><b><i>Gallipoli: The South Australian Story.</i></b></p> <p>Visited: 2006: July, Millicent National Trust Museum; August, Mount Gambier National Trust Courthouse Museum; September, John Riddoch Centre Local History Display, Penola; October, Largs Bay RSL; November, Mallala Museum; December, Streaky Bay National Trust Museum. 2007: January/ February, Streaky Bay National Trust Museum; March/April, Leigh Creek Visitor Information Centre; May/June, City of Playford Library Service, Elizabeth</p> <p><b><i>The Voice of the People: Democracy Comes to South Australia</i></b></p> <p>Visited: 2007: 8-9 March, <i>The Politics of Democracy</i> conference, Adelaide; March/April, Burra Town Hall, Burra; May, Mt Gambier National Trust Museum/Mt Gambier Civic Centre; June, Old Highercombe Hotel Museum, Tea Tree Gully</p> <p><b><i>Vote Yes: the 1967 Referendum</i></b></p> <p>Visited: 2007: 27 May, Reconciliation Week Family Day, Elder Park, Adelaide; 29 May – 5 June, Tauondi College, Port Adelaide; 8–29 June, City of Onkaparinga (3 venues: Noarlunga Centre council foyer, Aldinga Library and Aberfoyle Hub Library)</p>
<b>Migration Museum</b>	<p><b><i>They Took Our Land and then Our Children: 1923 Ngarrindjeri Petition</i></b></p> <p>Visited: Portside Christian School and Morphett Vale East Primary School. Sorry Day event, Migration Museum Reconciliation Week, May 2007.</p> <p><b><i>Fall of Saigon: Collected Fragments of the Post-75 Generation</i></b></p> <p>Visited: Offices of the South Australian Multicultural and Ethnic Affairs Commission.</p>
<b>South Australian Maritime Museum</b>	<p><b><i>The River – Life on the Murray Darling.</i></b> (Produced in collaboration with Australian National Maritime Museum)</p> <p>Visited: Morgan Museum, 17 February – 20 June 2007 Peppin Heritage Centre, Deniliquin, 23 June 2007 – ongoing</p> <p><b><i>Wrecked! Tragedy and the Southern Sea</i></b></p> <p>Visited: Whyalla Maritime Museum. 26 July – 12 November 2006 Warrnambool Art Gallery. 24 November 2006 – 14 January 2007 Port Pirie Art Gallery. 17 February – 22 April 2007 Riddoch Art Gallery, Mount Gambier. 4 May – 1 July 2007.</p>

## 14. Exhibition Program (cont.)

---

### Events / Audience Development

History Trust	<p><b>SA History Week 2007.</b> 18–27 May 2007</p> <p><b><i>The Politics of Democracy in South Australia.</i></b> 2–day conference, 8–9 March 2007, Next Generation Memorial Drive Function Centre, Adelaide. Free conference</p> <p><b><i>The True Guardians of Democracy – the Parliament or the Courts?</i></b> Public lecture by Hon Justice Perry AO, 8 March 2007, Brookman Hall, University of South Australia, Adelaide. Free lecture.</p>
Migration Museum	<p>Book launch of <i>Seeking Asylum Alone</i> by Mary Crock. December 2006</p> <p>The Foundation's Annual General Meeting was held on the evening of 26 October with about 35 members attending</p> <p>Migration Museum Foundation Morning Tea. 19 December 2006 and 15 May 2007</p> <p>Polish Community Exhibition in the Education gallery and an Open Day celebrating Settlement Day. Sunday 15 October</p> <p><i>Seeking Asylum Alone</i> book launch, guest speaker author Eva Sallis. 9 November 2006</p> <p>Department of Premiers and Cabinet Christmas Function. 8 December 2006</p> <p>The Latvian Association installed an exhibition in the Education gallery which was launched by Lieutenant Governor Bruno Krumins on Tuesday 26 December in conjunction with a National Latvian Festival.</p> <p>Flambouron Philanthropic Society of SA 50 Years Anniversary Celebration. 4 February 2007</p> <p>The Cultural &amp; Indigenous Resource Centre Australia (CIRCA), research workshop. 1 March 2007</p> <p>SA History Workshops in conjunction with Multicultural SA. 24 March 2007.</p> <p>Sorry Day Event. 26 May 2007</p> <p>Baltic Plaque Ceremony. 16 June 2007</p> <p>Bosnian wreath-laying at the Bosniaks plaque. July 2007</p> <p><i>Refugee Week</i>, Community Connections Booklet launch. 20 June 2007</p>

## 14. Exhibition Program (cont.)

---

### Events / Audience Development

National Motor Museum	<i>2005 Bay to Birdwood Classic.</i> 24 September 2006
	<i>Birdwood Country Bash.</i> 19 November 2006
	<i>Rock &amp; Roll Rendezvous.</i> 25 February 2007
	<i>Motorcycle Show and Shine</i> (Inaugural). The Museum hosted this on Sunday 18 February in conjunction with the Masonic Foundation. The event had been designed to highlight men's health issues and to raise funds for research into Prostate cancer
SA Maritime Museum	Flinders Ports Community Access Day. Offering free admission. 10 December 2006 and 17 June 2007
	Dolphin Spotting Cruises. 2–19 January
	<i>Maritime Mayhem.</i> Vacation Program, 30 September – 15 October 2006
	<i>River Life.</i> Vacation Program. 2–19 January 2007
	<i>Shipboard Games.</i> Vacation Program. 14–29 April 2007
	Port River Cruises. 30 September – 15 October 2006, 14–29 April 2007
	Steam Tug <i>Yelta</i> Cruises. 21 – 28 January; 21–29 April 2007
	Family History Fair. 29 April 2007
	Ports Festival. 18–29 June 2007
	Adelaide Steamship: Australia's Largest Line. 29 June 2006–ongoing.
	Ship reunions program. Reunion for passengers who came to Australia on Sitmar Line vessels, on 24 June 2007, and on the P&O Line's Strath-ships, on 27 May 2007
	<i>Life Onboard</i> Education program. New program developed for primary schools about the experiences of migrating to Australia in the 19th and 20th centuries.

---

## 15. Financial Statement for the year ended 30 June 2007

---



Government of South Australia  
Auditor-General's Department

Our Ref: A07/091

28 September 2007

Mr P Broderick  
Chairperson  
History Trust of South Australia  
GPO Box 1836  
**ADELAIDE SA 5001**

9th Floor  
State Administration Centre  
200 Victoria Square  
Adelaide SA 5000  
DX 56208  
Victoria Square  
Tel +618 8226 9640  
Fax +618 8226 9688  
ABN 53 327 061 410  
audgensa@audit.sa.gov.au  
www.audit.sa.gov.au

Dear Mr Broderick,

### Financial Report 2006-07

The audit of the financial report of History Trust of South Australia for the year ended 30 June 2007 has been completed.

The audit covered the principal accounting functions, internal controls and processes including test verification of financial transactions processed and recorded during the year.

Specifically, the following areas were covered during 2006-2007:

- Revenue
- Expenditure
- Salaries and Wages
- Inventory
- Non-Current Assets
- Collections
- Financial Accounting
- Corporate Governance.

The results of the interim audit were communicated to the Chief Executive in a letter dated 14 August 2007. A satisfactory response to the letter and issues raised has been received.

The Financial Report of the History Trust of South Australia is returned herewith together with my Independent Auditor's Report.

I would like to take this opportunity to express my appreciation to your staff for their cooperation during the course of the audit.

Yours sincerely

A handwritten signature in dark ink, appearing to read 'S O'Neill'.

S O'Neill  
**AUDITOR-GENERAL**

## INDEPENDENT AUDITOR'S REPORT



Government of South Australia

Auditor-General's Department

9th Floor  
State Administration Centre  
200 Victoria Square  
Adelaide SA 5000  
DX 56208  
Victoria Square  
Tel +618 8226 9640  
Fax +618 8226 9688  
ABN 53 327 061 410  
audgensa@audit.sa.gov.au  
www.audit.sa.gov.au

### TO THE CHAIRPERSON HISTORY TRUST OF SOUTH AUSTRALIA

As required by section 31 of the *Public Finance and Audit Act 1987* and subsection 19(2) of the *History Trust of South Australia Act 1981*, I have audited the accompanying financial report of the History Trust of South Australia and the controlled entity for the financial year ended 30 June 2007. The financial report comprises:

- An Income Statement;
- A Balance Sheet;
- A Statement of Changes in Equity;
- A Cash Flow Statement;
- Notes to the Financial Statements; and
- A Certification of the Financial Report by the Chief Executive, Chairperson and the Business Manager.

The financial report includes the consolidated financial statements of the consolidated entity, comprising the History Trust of South Australia and the entity it controlled at the year's end or from time to time during the financial year.

### The Responsibility of the Members of the Trust for the Financial Report

The members of the Trust are responsible for the preparation and fair presentation of the financial report in accordance with the Treasurer's Instructions promulgated under the provisions of the *Public Finance and Audit Act 1987* and Australian Accounting Standards (including the Australian Accounting Interpretations). This responsibility includes establishing and maintaining internal controls relevant to the preparation and fair presentation of the financial report that is free from material misstatement, whether due to fraud or error; selecting and applying appropriate accounting policies; and making accounting estimates that are reasonable in the circumstances.

### Auditor's Responsibility

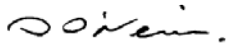
My responsibility is to express an opinion on the financial report based on the audit. The audit was conducted in accordance with the requirements of the *Public Finance and Audit Act 1987* and Australian Auditing Standards. The Auditing Standards require that the auditor complies with relevant ethical requirements relating to audit engagements and plans and performs the audit to obtain reasonable assurance whether the financial report is free from material misstatement.

An audit involves performing procedures to obtain audit evidence about the amounts and disclosures in the financial report. The procedures selected depend on the auditor's judgement, including the assessment of the risks of material misstatement of the financial report, whether due to fraud or error. In making those risk assessments, the auditor considers internal controls relevant to the entity's preparation and fair presentation of the financial report in order to design audit procedures that are appropriate in the circumstances. An audit also includes evaluating the appropriateness of the accounting policies used and the reasonableness of accounting estimates made by the members of the Trust, as well as the overall presentation of the financial report.

I believe that the audit evidence I have obtained is sufficient and appropriate to provide a basis for my audit opinion.

**Auditor's Opinion**

In my opinion, the financial report presents fairly, in all material respects, the financial position of the History Trust of South Australia and the consolidated entity as at 30 June 2007, and their financial performance and their cash flows for the year then ended in accordance with the Treasurer's Instructions promulgated under the provisions of the *Public Finance and Audit Act 1987* and Australian Accounting Standards (including the Australian Accounting Interpretations).

**S O'Neill****Auditor-General**

27 September 2007

## History Trust of South Australia

### INCOME STATEMENT

For the Year Ended 30 June 2007

	Note Number	Consolidated		HTSA	
		2007 \$'000	2006 \$'000	2007 \$'000	2006 \$'000
<b>Expenses</b>					
Employee benefits costs	6	3 008	2 825	3 008	2 825
Supplies and services	7	2 961	2 781	2 929	2 695
Depreciation	8	593	586	593	586
Grant payments	9	181	174	181	174
Net loss from the disposal of assets	13	-	247	-	247
<b>Total Expenses</b>		<b>6 743</b>	<b>6 613</b>	<b>6 711</b>	<b>6 527</b>
<b>Income</b>					
Revenue from fees and charges	10	924	979	888	933
Interest revenues	11	155	122	129	99
Resources received free of charge	17	187	264	187	264
Other income	12	970	1 263	970	1 208
<b>Total Income</b>		<b>2 236</b>	<b>2 628</b>	<b>2 174</b>	<b>2 504</b>
<b>Net Cost of providing services</b>		<b>(4 507)</b>	<b>(3 985)</b>	<b>(4 537)</b>	<b>(4 023)</b>
<b>Revenues from / Payments to SA Government</b>					
Revenue from SA Government – Recurrent Operating		3 767	3 759	3 767	3 759
<b>Total Revenues from SA Government</b>		<b>3 767</b>	<b>3 759</b>	<b>3 767</b>	<b>3 759</b>
<b>Net Result</b>		<b>(740)</b>	<b>(226)</b>	<b>(770)</b>	<b>(264)</b>

The net result is attributable to the SA Government as owner

## History Trust of South Australia

### BALANCE SHEET

As at 30 June 2007

		Consolidated		HTSA	
	Note	2007	2006	2007	2006
	Number	\$'000	\$'000	\$'000	\$'000
<b>Current Assets</b>					
Cash and cash equivalents	24	1 785	1 629	1 346	1 610
Receivables	15	72	48	72	48
Inventories		81	81	81	81
Investments	16	-	390	-	-
<b>Total Current Assets</b>		<b>1 938</b>	<b>2 148</b>	<b>1 499</b>	<b>1 739</b>
<b>Non-Current Assets</b>					
Property, plant and equipment	17	16 611	17 251	16 611	17 251
Heritage collections	17	12 886	12 482	12 886	12 482
<b>Total Non-Current Assets</b>		<b>29 497</b>	<b>29 733</b>	<b>29 497</b>	<b>29 733</b>
<b>Total Assets</b>		<b>31 435</b>	<b>31 881</b>	<b>30 996</b>	<b>31 472</b>
<b>Current Liabilities</b>					
Payables	18	127	140	127	140
Short-term and long term employee benefits	19	315	299	315	299
Short-term provisions	20	17	13	17	13
<b>Total Current Liabilities</b>		<b>459</b>	<b>452</b>	<b>459</b>	<b>452</b>
<b>Non-Current Liabilities</b>					
Payables	18	38	32	38	32
Long-term employee benefits	19	392	338	392	338
Long-term provisions	20	46	35	46	35
<b>Total Non-Current Liabilities</b>		<b>476</b>	<b>405</b>	<b>476</b>	<b>405</b>
<b>Total Liabilities</b>		<b>935</b>	<b>857</b>	<b>935</b>	<b>857</b>
<b>Net Assets</b>		<b>30 500</b>	<b>31 024</b>	<b>30 061</b>	<b>30 615</b>
<b>Equity</b>					
Retained earnings		20 620	21 360	20 181	20 951
Asset revaluation reserve		9 880	9 664	9 880	9 664
<b>Total Equity</b>		<b>30 500</b>	<b>31 024</b>	<b>30 061</b>	<b>30 615</b>
<b>Equity is attributable to the SA Government as owner</b>					
Commitments for expenditure	22				
Contingent assets and liabilities	23				

## History Trust of South Australia

### STATEMENT OF CHANGES IN EQUITY

For the Year Ended 30 June 2007

	Consolidated			HTSA		
	Asset Revaluation Reserve \$'000	Retained Earnings \$'000	Total \$'000	Asset Revaluation Reserve \$'000	Retained Earnings \$'000	Total \$'000
<b>Balance at 30 June 2005</b>	9 627	21 586	31 213	9 627	21 215	30 842
Gain on revaluation of heritage collections during 2005-06	37	-	37	37	-	37
<b>Net income recognised directly in equity for 2005-06</b>	37	-	37	37	-	37
<b>Net result for 2005-06</b>	-	(226)	(226)	-	(264)	(264)
<b>Total recognised income and expense for 2005-06</b>	37	(226)	(189)	37	(264)	(227)
<b>Balance at 30 June 2006</b>	9 664	21 360	31 024	9 664	20 951	30 615
Gain on revaluation of heritage collections during 2006-07	216	-	216	216	-	216
<b>Net income recognised directly in equity for 2006-07</b>	216	-	216	216	-	216
<b>Net result for 2006-07</b>	-	(740)	(740)	-	(770)	(770)
<b>Total recognised income and expense for 2006-07</b>	216	(740)	(524)	216	(770)	(554)
<b>Balance at 30 June 2007</b>	9,880	20 620	30 500	9 880	20 181	30 061

All changes in equity are attributable to SA Government as owner

## History Trust of South Australia

### CASH FLOW STATEMENT

For the Year Ended 30 June 2007

		Consolidated		HTSA	
	Note	2007	2006	2007	2006
	Number	\$'000	\$'000	\$'000	\$'000
<b>Cash flows from Operating Activities</b>					
<b>Cash Outflows</b>					
Employee benefits payments		(2 922)	(2 765)	(2 922)	(2 765)
Supplies and services		(2 867)	(2 710)	(2 835)	(2 624)
Grant payments		(181)	(174)	(181)	(174)
<b>Cash used in operations</b>		<b>(5 970)</b>	<b>(5 649)</b>	<b>(5 938)</b>	<b>(5 563)</b>
<b>Cash Inflows</b>					
Receipts from fees & charges		1289	902	863	907
Interest received		155	125	129	97
Other receipts		970	1 263	970	1 209
<b>Cash generated from Operations</b>		<b>2 414</b>	<b>2290</b>	<b>1 962</b>	<b>2 213</b>
Cash flows from SA Government					
Receipts from SA Government – Recurrent Operating		3 767	3 759	3 767	3 759
<b>Cash generated from SA Government</b>		<b>3 767</b>	<b>3 759</b>	<b>3 767</b>	<b>3 759</b>
<b>Net cash provided by operating activities</b>	24	<b>211</b>	<b>400</b>	<b>(209)</b>	<b>409</b>
<b>Cash flows from Investing Activities</b>					
<b>Cash Outflows</b>					
Purchase of property, plant and equipment		(55)	(23)	(55)	(23)
<b>Cash used in investing activities</b>		<b>(55)</b>	<b>(23)</b>	<b>(55)</b>	<b>(23)</b>
<b>Net cash used in investing activities</b>		<b>(55)</b>	<b>(23)</b>	<b>(55)</b>	<b>(23)</b>
<b>Net (Decrease)/Increase in cash and cash equivalents</b>		<b>156</b>	<b>377</b>	<b>(264)</b>	<b>386</b>
Cash and cash equivalents at 1 July		1 629	1 252	1 610	1 224
<b>Cash and cash equivalents at 30 June</b>	24	<b>1 785</b>	<b>1 629</b>	<b>1 346</b>	<b>1 610</b>

## NOTES TO THE FINANCIAL STATEMENTS

### Note 1. Objectives of the History Trust of South Australia (the Trust)

The Trust's objectives are to:

- raise the level of community and schools-based participation in the study and enjoyment of South Australian history and the preservation of its evidence;
- mount popular exhibitions, events and other public programs on South Australian history and actively involve the community in their research and preparation;
- preserve the state's collection of movable items;
- provide advice and assistance to museums, historical societies and authors.

The Trust is charged with the management of the History Trust of South Australia, as prescribed under the *History Trust of South Australia Act 1981*.

The Trust's principal source of funds consists of grants from the State Government.

### Note 2. Summary of Significant Accounting Policies

#### a) Basis of Accounting

The financial report is a general purpose financial report. The accounts have been prepared in accordance with applicable Australian Accounting Standards and Treasurer's Instructions and Accounting Policy Statements (APS) promulgated under the provisions of the Public Finance and Audit Act 1987 (PFAA).

The Trust's Income Statement, Balance Sheet and Statement of Changes in Equity have been prepared on an accrual basis and are in accordance with the historical cost convention, except for certain assets that were valued in accordance with the valuation policy applicable.

The Cash Flow Statement has been prepared on a cash basis.

The preparation of the financial report requires:

- the use of certain accounting estimates and requires management to exercise its judgment in the process of applying the Trust's accounting policies. The areas involving a higher degree of judgment or where assumptions and estimates are significant to the financial statements, these are outlined in the applicable notes; and
- compliance with APS issued pursuant to section 41 of the Public Finance and Audit Act 1987, by authority of Treasurer's Instruction 19 Financial Reporting. In the interest of public accountability and transparency the APS require the following note disclosures, that have been included in this Financial Report:
  - a) revenues, expenses, financial assets and liabilities where the counterparty/transaction is with an entity within the SA Government as at reporting date, classified according to their nature. A threshold of \$100 000 for separate identification of these items applies;
  - b) expenses incurred as a result of engaging consultants (as reported in the Income Statement); and
  - c) employees whose normal remuneration is \$100 000 or more (within \$10 000 bandwidths) and the aggregate of the remuneration paid or payable or other wise made available, directly or indirectly by the entity to those employees.

#### b) The Reporting Entity

The consolidated financial statements have been prepared by combining the financial statements of all entities that comprise the consolidated entity being the Trust and the Migration Museum Foundation Incorporated, in accordance with AASB 127 *Consolidated and Separate Financial Statements*. A list of controlled entities is at note 26. Consistent accounting policies have been applied and all inter-entity balances and transactions arising within the consolidated entity have been eliminated in full.

c) Comparative Information

The presentation and classification of items in the financial report are consistent with prior periods except where a specific APS or Australian Accounting Standard has required a change.

d) Rounding

All amounts in the financial statements have been rounded to the nearest thousand dollars (\$'000)

e) Income and Expenses

Income and expense are recognised in the Trust's Income Statement when and only when it is probable that the flow of economic benefits to or from the entity will occur and can be reliably measured.

Income and expenses have been classified according to their nature in accordance with Accounting Policy Framework II *General Purpose Financial Reporting Framework* APS 3.5.

*Transactions with SA Government*

In accordance with Accounting Policy Framework II *General Purpose Financial Reporting Framework* APS 4.1 and APS 4.2 the financial report's notes disclose income, expenses, financial assets and financial liabilities where the counter party / transaction is with an entity within the SA Government as at the reporting date, classified according to their nature.

Transactions with SA Government entities below the threshold of \$100,000 have been included with the non-government transactions, classified according to their nature.

*Income*

Income from the sale of goods is recognised upon the delivery of goods to customers. Interest revenue is recognised on a proportional basis taking into account the interest rates applicable to the financial assets. Income from the rendering of a service is recognized upon the delivery of the service to the customers. Government Grants are recognized as revenues in the period in which the Trust obtains control over the grants. Control over these revenues is normally obtained upon receipt and they are accounted for in accordance with Treasurer's Instruction 3 Appropriation.

*Resources received free of charge*

Resources received free of charge are recorded as revenue in the Income Statement at their fair value in accordance with Accounting Policy Framework III *Asset Accounting Framework* APS 2.12.

f) Non-Current Assets Acquisition and Recognition

Assets are initially recorded at cost or at the value of any liabilities assumed, plus any incidental cost involved with the acquisition. Where assets are acquired at no value, or minimal value, they are recorded at their fair value in the Balance Sheet. If however, the assets are acquired at no or nominal value as part of a restructuring of administrative arrangements then the assets are recorded at the value recorded by the transferor prior to transfer.

g) Cash and Cash Equivalents

For the purposes of the Cash Flow Statement, cash and cash equivalents includes cash at bank and on hand and short term deposits at call.

Cash is measured at nominal value.

h) Receivables

Receivables include amounts receivable from trade and other accruals.

Trade receivables arise in the normal course of selling goods and services to the public and agencies. Trade receivables are generally receivable within 30 days after the issue of an invoice or the goods/services have been provided under a contractual arrangement.

Other debtors arise outside the normal course of selling goods and services to other entities and to the public.

The Trust determines the provision for doubtful debts based on a review of balances within trade receivables that are unlikely to be collected. These are generally receivables that are 90 days or more overdue.

i) Inventories

Inventories (other than those held for distribution at no or nominal consideration) are measured at the lower of cost or their net realisable value.

j) Current and Non-Current Items

Assets and liabilities are characterised as either current or non-current in nature. The Trust has a clearly identifiable operating cycle of twelve months. Assets and liabilities that are sold, consumed or realised as part of the normal operating cycle even when they are not expected to be realised within the twelve months after the reporting date have been classified as current assets or current liabilities. All other assets and liabilities are classified as non-current.

k) Other Financial Assets

In accordance with the Accounting Policy Statements contained in the Accounting Policy Framework IV *Financial Asset and Liability Framework*, the Authority measures financial assets at historical cost.

l) Revaluation of Non-Current Assets

*Land and Buildings*

Land and buildings have been valued at written down current cost (a proxy for fair value). Valuations of land and buildings were determined as at 30 June 2005 by Tim Nankivell, Australian Valuation Office. Land and buildings are independently valued every three years.

*Plant and Equipment*

Plant and equipment have been valued at historical cost.

*Heritage Collections*

The heritage collections are large and diverse. They include many items that are complex to value given considerations of market value and their unique representation of South Australia's social history.

The Trust adopted the following methodology for valuing heritage assets. Items under \$10 000 were valued by the appropriate internal curator and items over \$10 000 were valued by external valuers listed below. Heritage Collections have been valued at fair value. Items over \$10,000 are independently revalued every 5 years.

The heritage collections have been revalued as follows:

- National Motor Museum collections as at 30 June 2004
- Migration Museum collections as at 30 June 2004
- South Australian Maritime Museum collections as at 30 June 2006 with the exception of the vessels which were valued as at 30 June 2007.

The external valuations were carried out by the following recognised industry experts:

<b>Collection</b>	<b>Industry Expert</b>
National Motor Museum	Antony Davies
South Australian Maritime Museum	Christine Courtney, SeaWitch
South Australian Maritime Museum	George Codz Marine
South Australian Maritime Museum	Allan R Rice, Allan Rice Marine Surveys
Migration Museum	Lee Blair-Jenke, Regimentals Antiques
Migration Museum	Michael Treloar, Antiquarian Books
Migration Museum	Anthony Hurl, Tusmore Antiques

m) Depreciation of Non-Current Assets

Depreciation is calculated on a straight-line basis to write off the net cost or revalued amount of each non-current asset over its expected useful life except for land and heritage collections, which are not depreciable. Estimates of remaining useful lives are made on a regular basis for all assets, with annual reassessments for major items.

The expected useful lives are as follows:

Class of Asset	Useful Life (Years)
Buildings and Improvements	20 to 100
Plant and Equipment	3 to 25

Heritage Collections have unlimited useful lives. Their future economic benefits have not been consumed during the financial year. Therefore no depreciation is recognised in respect of these assets.

n) Payables

Payables include creditors, accrued expenses and employment on-costs.

Creditors and accrued expenses represent goods and services provided by other parties during the period that are unpaid at the end of the reporting period. All payables are measured at their nominal amount and are normally settled within 30 days from the date of the invoice or date the invoice is first received in accordance with Treasurer's Instruction 11 *Payment of Creditor's Accounts*.

Employment on-costs include superannuation contributions and payroll tax with respect to outstanding liabilities for salaries and wages, long service leave and annual leave.

o) Employee Benefits

These benefits accrue for employees as a result of services provided up to the reporting date that remain unpaid. Long-term employee benefits are measured at present value and short-term benefits are measured at nominal amounts.

No provision has been made for sick leave as all sick leave is non-vesting and the average sick leave taken in future years by employees is estimated to be less than the annual entitlement of sick leave.

a) *Liabilities for Salaries, Wages and Annual Leave*

Liability for salaries and wages are measured as the amount unpaid at the reporting date at remuneration rates current at reporting date. The annual leave liability is expected to be payable within twelve months and is measured at the undiscounted amount expected to be paid.

b) *Long Service Leave*

The liability for long service leave is recognised after an employee has completed 6.5 years of service. An actuarial assessment of Long Service Leave undertaken by the Department of Treasury and Finance based on a significant sample of employees throughout the South Australian public sector determined that the liability measured using the short-hand method was not materially different from the liability measured using the present value of expected future payments. This calculation is consistent with the Trust's experience of employee retention and leave taken.

c) *Superannuation*

Contributions are made by the Trust to several superannuation schemes operated by the State Government and the private sector. These contributions are treated as an expense when they occur. There is no liability for payments to beneficiaries as they have been assumed by the superannuation schemes.

p) Workers Compensation Provision

A liability has been reported to reflect unsettled workers compensation claims. The workers compensation provision is based on an actuarial assessment performed by the Public Sector Workforce Wellbeing Group within the Public Sector Work Force division of the Department of Premier and Cabinet.

q) Leases

*Operating Leases*

The Trust has entered into a number of operating lease agreements for accommodation, plant and equipment where the lessors effectively retain all of the risks and benefits incidental to ownership of the items held under the operating leases.

Operating lease payments are representative of the pattern of benefits derived from the leased assets and accordingly are charged to the Income Statement in the periods in which they are incurred.

r) Accounting for the Goods and Services Tax (GST)

The amount of GST incurred by the Trust as a purchaser that is not recoverable from the Australian Taxation Office is recognized as part of the cost of acquisition of an asset or part of an item of expense.

The net GST receivable/payable to the Australian Taxation Office is not recognized as a receivable/payable in the Balance Sheet as the Trust is a member of an approved GST group of which Arts SA, a division of the Department of the Premier and Cabinet, is responsible for the remittance and collection of GST. There are no cash flows relating to GST transactions with the Australian Taxation Office in the Cash Flow Statement.

s) Insurance

The Trust has arranged, through the South Australian Government Financing Authority a SAICORP division, to insure all major risks of the Trust. The excess payable under this arrangement varies depending on each class of insurance held.

t) Principles of Consolidation

The consolidated financial statements incorporate the assets and liabilities of entities controlled by the Trust as at 30 June 2007, and the results of all controlled entities for the year then ended. The effects of all transactions between entities in the consolidated entity are eliminated in full. Refer to note 26.

**Note 3. Financial Risk Management**

The Trust is exposed to minimal financial risks, credit risk and liquidity risk.

Risk management is carried out internally using the Department of Premier and Cabinet risk management framework which is in accordance with Australian Risk Management Standards.

The Trust has non-interest bearing assets (cash on hand and on call and receivables), liabilities (payables) and interest bearing assets (held to maturity investments).

The Trust's exposure to foreign exchange risk and cash flow interest risk is minimal.

The Trust has no significant concentration of credit risk. The Trust has policies and procedures in place to ensure that transactions occur with customers with appropriate credit history.

**Note 4. Changes in Accounting Policies**

There have been no changes in accounting policies for the year.

**Note 5. Service/Program Information**

Service/Program information has not been separately disclosed as the Trust has one identifiable major activity, being the maintenance and preservation of the state's historical collections and raising community awareness of the state's history.

**Note 6. Employee benefits costs**

	Consolidated		HTSA	
	2007	2006	2007	2006
	\$'000	\$'000	\$'000	\$'000
Salaries and Wages	2 272	2 170	2 272	2 170
Superannuation	264	247	264	247
Payroll Tax	128	125	128	125
Annual Leave	204	192	204	192
Long Service Leave	85	57	85	57
Other employee related expenses	55	34	55	34
<b>Total employee benefits costs</b>	<b>3 008</b>	<b>2 825</b>	<b>3 008</b>	<b>2 825</b>

**Remuneration of employees**

The number of employees whose remuneration received or receivable falls within the following bands:

	Number of Employees	Number of Employees
	2007	2006
\$100,000 - \$109,999	1	1
\$130,000 - \$139,999	1	1
<b>Total number of employees</b>	<b>2</b>	<b>2</b>

The table includes all employees who received remuneration of \$100 000 or more during the year. Remuneration of employees reflects all costs of employment including salaries and wages, superannuation contributions, fringe benefits tax and other salary sacrifice benefits. The total remuneration received by these employees for the year was \$246,000 (\$237,000).

**Targeted Voluntary Separation Packages (TVSPs)**

There were no TVSPs paid in either 2006-2007 or 2005-2006.

**Remuneration of Board Members**

The number of Board Members who received income from the Trust fell within the following bands:

	Number of Board Members	Number of Board Members
	2007	2006
\$0 - \$9,999	7	9
<b>Total Number of Board Members</b>	<b>7</b>	<b>9</b>

The total income received by these Board Members for the year was \$9,000 (\$4,000).

**Related Party Disclosures**

During the financial year the following persons held a position on the Trust;

Dr M Allen	Mr B Moulds
Mr P Broderick (Chair)	Ms M Nasser-Eddine
Dr A Mackinnon	Mr. P. Satchell
Prof. S Magarey	

The Members of the Trust, or their related entities, have transactions with the Board that occur within a normal customer or supplier relationship on terms and conditions no more favourable than those with which it is reasonably expected the entity would have adopted if the transactions were undertaken with any other entity at arm's length in similar circumstances.

**Note 7. Supplies and services**

	<b>Consolidated</b>		<b>HTSA</b>	
	<b>2007</b>	<b>2006</b>	<b>2007</b>	<b>2006</b>
	<b>\$'000</b>	<b>\$'000</b>	<b>\$'000</b>	<b>\$'000</b>
<b>Supplies and services provided by entities external to the SA Government</b>				
Accommodation	96	154	96	154
Building maintenance	333	177	321	132
Communication and stationery	132	114	131	110
Cost of goods sold	110	110	109	110
Exhibitions and collections	542	319	542	319
Information technology	55	68	55	68
Marketing and promotion	217	237	214	236
Minor equipment	27	62	27	62
Operating leases	151	179	151	179
Professional fees	3	2	2	2
Projects	46	131	36	103
Travel	38	42	38	42
Other	100	167	96	159
<b>Total supplies and services – Non SA Government entities</b>	<b>1 850</b>	<b>1 762</b>	<b>1 818</b>	<b>1 676</b>
<b>Supplies and services provided by entities within the SA Government</b>				
Accommodation	151	91	151	91
Building maintenance	199	189	199	189
Business services charges	111	112	111	112
Communication and stationery	38	41	38	41
Conservation	239	234	239	234
Exhibitions and collections	81	80	81	80
Information technology	8	9	8	9
Insurance & risk management	105	102	105	102
Marketing and promotion	1	1	1	1
Minor equipment	3	2	3	2
Operating leases	68	104	68	104
Professional fees	35	31	35	31
Projects	32	-	32	-
Travel	-	1	-	1
Other	40	22	40	22
<b>Total supplies and services – SA Government entities</b>	<b>1 111</b>	<b>1 019</b>	<b>1 111</b>	<b>1 019</b>
<b>Total supplies and Services</b>	<b>2 961</b>	<b>2 781</b>	<b>2 929</b>	<b>2 695</b>

**Payments to Consultants**

The number of Consultants who were paid by the Trust fell within the following bands:

	<b>Number of Consultants</b>	<b>Number of Consultants</b>
	<b>2007</b>	<b>2006</b>
\$0 - \$9,999	-	1
<b>Total Number of Consultants</b>	<b>-</b>	<b>1</b>

The total paid by the Trust for the year was NIL (\$3,000).

**Note 8. Depreciation**

	<b>Consolidated</b>		<b>HTSA</b>	
	<b>2007</b>	<b>2006</b>	<b>2007</b>	<b>2006</b>
	<b>\$'000</b>	<b>\$'000</b>	<b>\$'000</b>	<b>\$'000</b>
Buildings and improvements	579	579	579	579
Plant and equipment	14	7	14	7
<b>Total depreciation</b>	<b>593</b>	<b>586</b>	<b>593</b>	<b>586</b>

**Note 9. Grant payments**

	Consolidated		HTSA	
	2007	2006	2007	2006
	\$'000	\$'000	\$'000	\$'000
Community History	26	27	26	27
Museum Accreditation and Grant Program	155	147	155	147
<b>Total grant payments</b>	<b>181</b>	<b>174</b>	<b>181</b>	<b>174</b>

**Note 10. Revenue from fees and charges**

	2007	2006	2007	2006
	\$'000	\$'000	\$'000	\$'000
<b>Revenue from fees and charges received/receivable from entities external to the SA Government</b>				
Admissions and Tours	538	589	538	543
Facilities and rent	57	62	57	62
Sales of goods	225	191	195	191
Other Sales	42	86	36	86
<b>Total Revenue from fees and charges</b>	<b>862</b>	<b>928</b>	<b>826</b>	<b>882</b>

**Revenue from fees and charges received/receivable from entities within the SA Government**

Admissions and Tours	50	39	50	39
Facilities and rent	1	2	1	2
Sales of goods	-	1	-	1
Other Sales	11	9	11	9
<b>Total Revenue from fees – SA Government entities</b>	<b>62</b>	<b>51</b>	<b>62</b>	<b>51</b>
<b>Total Revenue from fees</b>	<b>924</b>	<b>979</b>	<b>888</b>	<b>933</b>

**Note 11. Interest revenues**

	2007	2006	2007	2006
	\$'000	\$'000	\$'000	\$'000
Interest on deposit with Treasurer	129	99	129	99
Other	26	23	-	-
<b>Total Interest revenues</b>	<b>155</b>	<b>122</b>	<b>129</b>	<b>99</b>

**Note 12. Other income**

	2007	2006	2007	2006
	\$'000	\$'000	\$'000	\$'000
<b>Other income received/receivable from entities external to the SA Government</b>				
Sponsorship	206	392	206	337
Grants	113	96	113	96
Other Receipts	50	38	50	38
<b>Total other income– Non SA Government entities</b>	<b>369</b>	<b>526</b>	<b>369</b>	<b>471</b>

**Other incomes received/receivable from entities within the SA Government**

Sponsorship	32	128	32	128
Grants	208	415	208	415
Artlab Conservation	239	179	239	179
Business Services	111	-	111	-
Other Receipts	11	15	11	15
<b>Total other income – SA Government entities</b>	<b>601</b>	<b>737</b>	<b>601</b>	<b>737</b>
<b>Total other income</b>	<b>970</b>	<b>1 263</b>	<b>970</b>	<b>1 208</b>

**Note 13. Net Loss from disposal of assets**

	<b>Consolidated</b>		<b>HTSA</b>	
	<b>2007</b>	<b>2006</b>	<b>2007</b>	<b>2006</b>
	<b>\$'000</b>	<b>\$'000</b>	<b>\$'000</b>	<b>\$'000</b>
<b>Heritage collection</b>				
Net book value of assets disposed of	-	247	-	247
<b>Net loss from disposal of heritage collections</b>	<b>-</b>	<b>247</b>	<b>-</b>	<b>247</b>

**Note 14. Auditor's remuneration**

	<b>2007</b>	<b>2006</b>
	<b>\$'000</b>	<b>\$'000</b>
Audit fees paid/payable to the Auditor-General's Department	30	30
<b>Total audit fees - SA Government entities</b>	<b>30</b>	<b>30</b>

**Other Services**

No other services were provided by the Auditor-General's Department to the Trust.

**Note 15. Receivables**

	<b>Consolidated</b>		<b>HTSA</b>	
	<b>2007</b>	<b>2006</b>	<b>2007</b>	<b>2006</b>
	<b>\$'000</b>	<b>\$'000</b>	<b>\$'000</b>	<b>\$'000</b>
<b>Receivables from entities external to the SA Government</b>				
Debtors	64	33	64	33
<b>Total receivables – Non SA Government entities</b>	<b>64</b>	<b>33</b>	<b>64</b>	<b>33</b>
<b>Receivables from entities within the SA Government</b>				
Debtors	-	7	-	7
Accrued revenue	8	8	8	8
<b>Total receivables – SA Government entities</b>	<b>8</b>	<b>15</b>	<b>8</b>	<b>15</b>
<b>Total receivables</b>	<b>72</b>	<b>48</b>	<b>72</b>	<b>48</b>

**Note 16. Investments**

	<b>2007</b>	<b>2006</b>	<b>2007</b>	<b>2006</b>
	<b>\$'000</b>	<b>\$'000</b>	<b>\$'000</b>	<b>\$'000</b>
Investments with entities other than SAFA:				
<b>Current</b>				
Short term deposit – Savings and Loans Credit Union (SA) Ltd	-	390	-	-
<b>Total current investments</b>	<b>-</b>	<b>390</b>	<b>-</b>	<b>-</b>
<b>Total Investments</b>	<b>-</b>	<b>390</b>	<b>-</b>	<b>-</b>

**Note 17. Property, plant and equipment and heritage collections**

	Consolidated		HTSA	
	2007	2006	2007	2006
	\$'000	\$'000	\$'000	\$'000
<b>Land, buildings and improvements</b>				
Land at Valuation	3 120	3 120	3 120	3 120
Buildings and improvements at Valuation	34 735	34 735	34 735	34 735
Works in Progress	30	132	30	132
Accumulated Depreciation	(21 344)	(20 765)	(21 344)	(20 765)
<b>Total land, buildings and improvements</b>	<b>16 541</b>	<b>17 222</b>	<b>16 541</b>	<b>17 222</b>
<b>Plant and equipment</b>				
Plant and equipment at cost (deemed fair value)	270	224	270	224
Accumulated depreciation	(200)	(195)	(200)	(195)
<b>Total plant and equipment</b>	<b>70</b>	<b>29</b>	<b>70</b>	<b>29</b>
<b>Total heritage collections</b>	<b>12 886</b>	<b>12 482</b>	<b>12 886</b>	<b>12 482</b>
<b>Total property, plant and equipment and heritage collections</b>	<b>29 497</b>	<b>29 733</b>	<b>29 497</b>	<b>29 733</b>

**Valuation of land, buildings and improvements**

A valuation of land, buildings and improvements was performed by an independent valuer from the Australian Valuation Office as at 30 June 2005. The valuation applied the fair value methodology.

**Reconciliation of property, plant and equipment**

	Land	Buildings & Improvements	Works in Progress	Plant & Equipment	Total
	\$'000	\$'000	\$'000	\$'000	\$'000
Carrying amount at 1 July	3 120	13 970	132	29	17 251
Depreciation expense	-	(579)	-	(14)	(593)
Works in progress expensed	-	-	(102)	-	(102)
Additions	-	-	-	55	55
<b>Carrying amount at 30 June</b>	<b>3 120</b>	<b>13 391</b>	<b>30</b>	<b>70</b>	<b>16 611</b>

**Reconciliation of heritage collections**

	2007	2006
	\$'000	\$'000
Carrying amount at 1 July	12 483	12 428
Resources received free of charge	193	264
Collections written off	(6)	(247)
Revaluation increments	216	37
<b>Carrying amount at 30 June</b>	<b>12 886</b>	<b>12 482</b>

**Note 18. Payables**

	Consolidated		HTSA	
	2007	2006	2007	2006
	\$'000	\$'000	\$'000	\$'000
<b>Current</b>				
Creditors and accruals	79	92	79	92
Employee on-costs	48	48	48	48
<b>Total current payables</b>	<b>127</b>	<b>140</b>	<b>127</b>	<b>140</b>
<b>Non-current</b>				
Employee on-costs	38	32	38	32
<b>Total non-current payables</b>	<b>38</b>	<b>32</b>	<b>38</b>	<b>32</b>
<b>Total payables</b>	<b>165</b>	<b>172</b>	<b>165</b>	<b>172</b>
<b>Payables to Non SA Government entities</b>				
Creditors and accruals	35	59	35	59
<b>Total payables – Non SA Government entities</b>	<b>35</b>	<b>59</b>	<b>35</b>	<b>59</b>
<b>Payables to SA Government entities</b>				
Creditors and accruals	44	33	44	33
Employee on-costs	86	80	86	80
<b>Total payables – SA Government entities</b>	<b>130</b>	<b>113</b>	<b>130</b>	<b>113</b>
<b>Total payables</b>	<b>165</b>	<b>172</b>	<b>165</b>	<b>172</b>

**Note 19. Employee benefits**

	2007	2006	2007	2006
	\$'000	\$'000	\$'000	\$'000
<b>Current</b>				
Annual Leave	199	189	199	189
Short-term Long Service Leave	68	62	68	62
Accrued Salaries and Wages	48	48	48	48
<b>Total Current Employee Benefits</b>	<b>315</b>	<b>299</b>	<b>315</b>	<b>299</b>
<b>Non-Current</b>				
Long term Long Service Leave	392	338	392	338
<b>Total Non-Current Employee Benefits</b>	<b>392</b>	<b>338</b>	<b>392</b>	<b>338</b>
<b>Total Employee Benefits</b>	<b>707</b>	<b>637</b>	<b>707</b>	<b>637</b>
<b>Total Employee Benefits and on-costs</b>	<b>793</b>	<b>717</b>	<b>793</b>	<b>717</b>

**Note 20. Provisions**

	2007	2006	2007	2006
	\$'000	\$'000	\$'000	\$'000
<b>Current</b>				
Provision for workers compensation	17	13	17	13
<b>Total Current Provisions</b>	<b>17</b>	<b>13</b>	<b>17</b>	<b>13</b>
<b>Non-Current</b>				
Provision for workers compensation	46	35	46	35
<b>Total Non-Current Provisions</b>	<b>46</b>	<b>35</b>	<b>46</b>	<b>35</b>
<b>Total Provisions</b>	<b>63</b>	<b>48</b>	<b>63</b>	<b>48</b>
<b>Reconciliation of the Provision for Workers Compensation</b>				
Provision at the beginning of the financial year	48	44	48	44
Increase in Provision during the year	15	4	15	4
<b>Provision for Workers Compensation at the end of the financial year</b>	<b>63</b>	<b>48</b>	<b>63</b>	<b>48</b>

**Note 21. Financial Instruments**

The following information is provided for the economic entity's financial instruments:

**(a) Terms, Conditions and Accounting Policies**

<b>Financial Instrument</b>	<b>Note</b>	<b>Accounting Policies and Methods</b>	<b>Nature of Underlying Instrument</b>
<b>Financial Assets</b>			
Cash and cash equivalents	24	Cash at bank is recorded at its nominal amount. Interest revenue is recorded on an accrual basis although some funds held within the total cash balance are non-interest bearing.	Interest is calculated based on the average daily balances of the interest bearing funds. The interest bearing funds of the Trust are within the Section 21 Account titled "History Trust of South Australia". The Migration Museum Foundation has a deposit account with the Savings and Loans Credit Union. The interest rate is the average interest rate on accounts.
Receivables	15	Receivables are recorded at amounts due to the Trust. They are recorded when services have been completed.	Receivables are due within 30 days.
Investments	16	Investments are brought to account at cost. Interest is credited to revenue as it accrues.	Short term deposit. Interest income is received biannually.
<b>Financial Liabilities</b>			
Payables	18	Creditors are recorded at the agreed amounts at which the liabilities are to be settled. They are recorded when invoices are received.	Terms of payment are 30 days unless otherwise agreed in the terms and conditions of individual contracts.

**(b) Interest rate risk**

The effective weighted average interest rate risk is outlined below for the following financial assets and liabilities.

Financial Instrument	Interest Rate %	Consolidated 2007			Interest Rate %	Consolidated 2006		
		Interest Bearing	Non-Interest Bearing	Total		Interest Bearing	Non-Interest Bearing	Total
		\$'000	\$'000	\$'000		\$'000	\$'000	\$'000
<b>Financial Assets</b>								
Cash and cash equivalents	5.38	1 769	16	1 785	5.43	1 593	36	1 629
Receivables		-	72	72		-	48	48
Investments		-	-	-	5.30	390	-	390
		1 769	88	1 857		1 983	84	2 067
<b>Financial Liabilities</b>								
Payables		-	79	79		-	92	92
		-	79	79		-	92	92

(c) Net Fair Values of Financial Assets and Liabilities

		Consolidated 2007		Consolidated 2006	
Financial Instrument	Note	Total Carrying Amount \$'000	Net Fair Value* \$'000	Total Carrying Amount \$'000	Net Fair Value* \$'000
<i>Financial Assets</i>					
Cash assets	24	1 785	1 785	1 629	1629
Receivables	15	72	72	48	48
Investments	16	-	-	390	390
		1 857	1 857	2067	2067
<i>Financial Liabilities</i>					
Payables	18	79	79	92	92
		79	79	92	92

\*The net fair value is determined as the carrying value of all assets and liabilities.

(d) Credit Risk Exposure

The Trust's maximum exposure to credit risk at reporting date in relation to financial assets is the carrying amount of those assets as indicated on the Balance Sheet. The Trust has no significant exposures to any concentrations of credit risk.

Note 22. Commitments

Operating Lease Commitments

Commitments under non-cancellable operating leases at the reporting date and not recognised as liabilities in the financial report, are payable as follows:

	2007 \$'000	2006 \$'000
Not later than one year	62	56
Later than one year and not later than five years	96	120
<b>Total Operating Lease Commitments</b>	<b>158</b>	<b>176</b>

The operating lease commitments comprise:

- A non-cancellable photocopier lease, with rental payable monthly in arrears. No contingent rental provisions exist within the lease agreement and no option to renew the lease at the end of its term.
- There are no property leases as at 30 June 2007.

Remuneration Commitments

Commitments under non-cancellable for remuneration contracts at the reporting date and not recognised as liabilities in the financial report, are payable as follows:

	2007 \$'000	2006 \$'000
Not later than one year	425	415
Later than one year and not later than five years	990	984
<b>Total Operating Lease Commitments</b>	<b>1 415</b>	<b>1 399</b>

The remuneration commitments comprise of employees on long term contracts. The Trust does not offer fixed term remuneration contracts greater than five years.

Capital Commitments

	Consolidated		HTSA	
	2007 \$'000	2006 \$'000	2007 \$'000	2006 \$'000
Capital expenditure contracted for at the reporting date is payable as follows:				
Not later than one year	340	-	340	-
<b>Total Capital Commitments</b>	<b>340</b>	<b>-</b>	<b>340</b>	<b>-</b>

These capital commitments are not recognised in the financial report as liabilities

Note 23. Contingent Assets and Liabilities

There are no known contingent assets and liabilities as at 30 June 2007.

**Note 24. Cash Flow Reconciliation**

	<b>Consolidated</b>		<b>HTSA</b>	
	<b>2007</b>	<b>2006</b>	<b>2007</b>	<b>2006</b>
	<b>\$'000</b>	<b>\$'000</b>	<b>\$'000</b>	<b>\$'000</b>
<b>Reconciliation of Cash and Cash Equivalents</b>				
For the purposes of the Cash Flow Statement, cash includes cash on hand and at bank.				
Cash as at the end of the financial year as shown in the Cash Flow Statement is reconciled to the items in the Balance Sheet as follows:				
Deposits with Treasurer	1330	1 593	1330	1 593
Deposits with other institutions	439	19	-	-
Cash on hand	16	17	16	17
<b>Cash as recorded in the Balance Sheet</b>	<b>1 785</b>	<b>1 629</b>	<b>1346</b>	<b>1 610</b>
<b>Reconciliation of Net Cash provided by Operating Activities to Net Cost of Providing Services</b>				
Net cash provided by (used in) Operating Activities	211	400	(209)	409
Less Revenues from SA Government	(3 767)	(3 759)	(3 767)	(3 759)
<b>Add (Less) non cash items</b>				
Depreciation of Property, Plant and Equipment	(593)	(586)	(593)	(586)
Donations of Heritage Collections	187	264	187	264
Loss on Disposal of Assets	-	(247)	-	(247)
<b>Changes in Assets and Liabilities</b>				
Increase in Receivables	24	27	24	27
(Decrease) in Inventories	-	(1)	-	(1)
Increase (Decrease) in Investments	(390)	47	-	-
(Decrease) in Other Assets	-	(55)	-	(55)
(Increase) in Payables	(82)	(18)	(82)	(18)
(Increase) in Employee Benefits and Provisions	(97)	(57)	(97)	(57)
<b>Net Cost of Providing Services for Operating Activities</b>	<b>(4 507)</b>	<b>(3985)</b>	<b>(4 537)</b>	<b>(4023)</b>

**Note 25. Events after Balance Date**

There were no events occurring after balance date.

**Note 26. Controlled Entity**

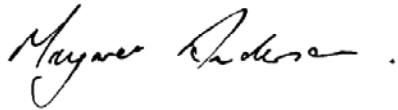
The consolidated financial statements at 30 June 2007 include the following controlled entity:

<b>Name of Controlled Entity</b>	<b>Place of Incorporation</b>
The Migration Museum Foundation Incorporated	Australia

## **Certification of the Financial Report**

We certify:

- That the financial statements are in accordance with the accounts and records of the History Trust of South Australia and give an accurate indication of the financial transactions of the Trust for the year ended 30 June 2007;
- As presenting fairly, in accordance with the Treasurer's Instructions promulgated under the provisions of the *Public Finance and Audit Act 1987*, applicable Accounting Standards and other mandatory professional reporting requirements in Australia, the financial position of the Trust as at 30 June 2007 and the result of its operations and its cash flows for the year ended 30 June 2007; and
- That internal controls over financial reporting have been effective throughout the reporting period.



M Anderson  
Chief Executive  
HISTORY TRUST OF SOUTH AUSTRALIA



P Broderick  
Chairperson  
HISTORY TRUST BOARD



R Rudzinski  
Business Manager  
HISTORY TRUST OF SOUTH AUSTRALIA