

SOUTH AUSTRALIA

---

# TWENTY SIXTH ANNUAL REPORT

OF THE

# HISTORY TRUST of SOUTH AUSTRALIA

FOR THE

YEAR ENDED 30 JUNE 2006



**History Trust of South Australia**

Torrens Parade Ground  
Victoria Drive  
Adelaide SA 5000

GPO Box 1836  
Adelaide SA 5001

DX 464 Adelaide

Telephone: +61 8 8203 9888  
Facsimile: +61 8 8203 9883 (General)  
              +61 8 8203 9889 (Executive)  
Website:   www.history.sa.gov.au  
Email:      staff@history.sa.gov.au

This report is prepared by the Directorate of the History Trust of South Australia.

ISSN 1832-8482

# CONTENTS

<b>BACKGROUND .....</b>	<b>1</b>
<b>ORGANISATIONAL CHART .....</b>	<b>2</b>
<b>CHAIRPERSON'S REPORT .....</b>	<b>3</b>
<b>CHIEF EXECUTIVE'S REPORT .....</b>	<b>4</b>
<b>THE YEAR'S HIGHLIGHTS IN SUMMARY .....</b>	<b>9</b>
<b>REVIEW OF OBJECTIVES 2005–2006 .....</b>	<b>10</b>
<b>MAJOR OBJECTIVES 2006–2007 .....</b>	<b>11</b>
<b>COMMUNITY HISTORY UNIT .....</b>	<b>12</b>
<b>MIGRATION MUSEUM .....</b>	<b>17</b>
<b>NATIONAL MOTOR MUSEUM .....</b>	<b>21</b>
<b>SOUTH AUSTRALIAN MARITIME MUSEUM .....</b>	<b>26</b>
<b>MARKETING AND SPONSORSHIP .....</b>	<b>30</b>
<b>BUSINESS SERVICES .....</b>	<b>36</b>
<b>APPENDICES .....</b>	<b>46</b>
1. <b>Board of Trustees .....</b>	<b>47</b>
2. <b>Management Personnel .....</b>	<b>47</b>
3. <b>Staff as at 30 June 2006 .....</b>	<b>48</b>
4. <b>Advisory Committees .....</b>	<b>49</b>
National Motor Museum Development Committee .....	49
5. <b>Honorary Consultants/Valuers .....</b>	<b>49</b>
6. <b>Migration Museum Foundation Committee Members .....</b>	<b>49</b>
7. <b>Volunteer Services .....</b>	<b>50</b>
8. <b>Key Performance Indicators 2005–2006 .....</b>	<b>51</b>
9. <b>Grants Obtained .....</b>	<b>51</b>
Directorate .....	51
Migration Museum .....	51
South Australian Maritime Museum .....	51
10. <b>Museums Accreditation and Grants Program .....</b>	<b>52</b>
Accredited museums as at 30 June 2006 .....	52
Registered museums as at 30 June 2006 .....	52
Allocation of grants .....	53
11. <b>South Australian History Fund .....</b>	<b>55</b>
12. <b>Publications .....</b>	<b>56</b>
13. <b>Unpublished Conference Papers .....</b>	<b>56</b>
14. <b>Exhibition Program .....</b>	<b>57</b>
Community Access .....	57
New Permanent Exhibitions .....	57
Temporary Exhibitions — In-house .....	58
Touring Exhibitions — Incoming .....	59
Touring Exhibitions — Outgoing .....	59
Events / Audience Development .....	60
15. <b>Financial Statement for the year ended 30 June 2006 .....</b>	<b>62</b>

## BACKGROUND

### Our Vision

*Our vision is to promote the value, understanding and enjoyment of history.*

### Our Mission

*Our mission is to encourage and work with the people of South Australia to:*

- *better understand our rich and distinctive history and*
- *enhance our sense of identity and belonging by making history a living and exciting element in the life of the State.*

### Who We Are

The History Trust of South Australia is a statutory authority reporting to Parliament through the Minister for the Arts. It was established in 1981 under the *History Trust of South Australia Act (1981, 1995, 2005)* to encourage the research and public presentation of South Australian history and to safeguard South Australia's material heritage. The Trust's central administration is located at the Torrens Parade Ground in central Adelaide, but its main public face is presented by three history museums — the Migration Museum, National Motor Museum and South Australian Maritime Museum. Changing exhibitions are also presented in the History Trust Exhibition Gallery at the Parade Ground. The Trust also manages an important community history program to assist community museums and historical researchers. The History Trust's Board of eight trustees reports to the Minister for the Arts.

### What We Do

Under the *History Trust of South Australia Act (1981, 1995, 2005)* the Trust is responsible for the following:

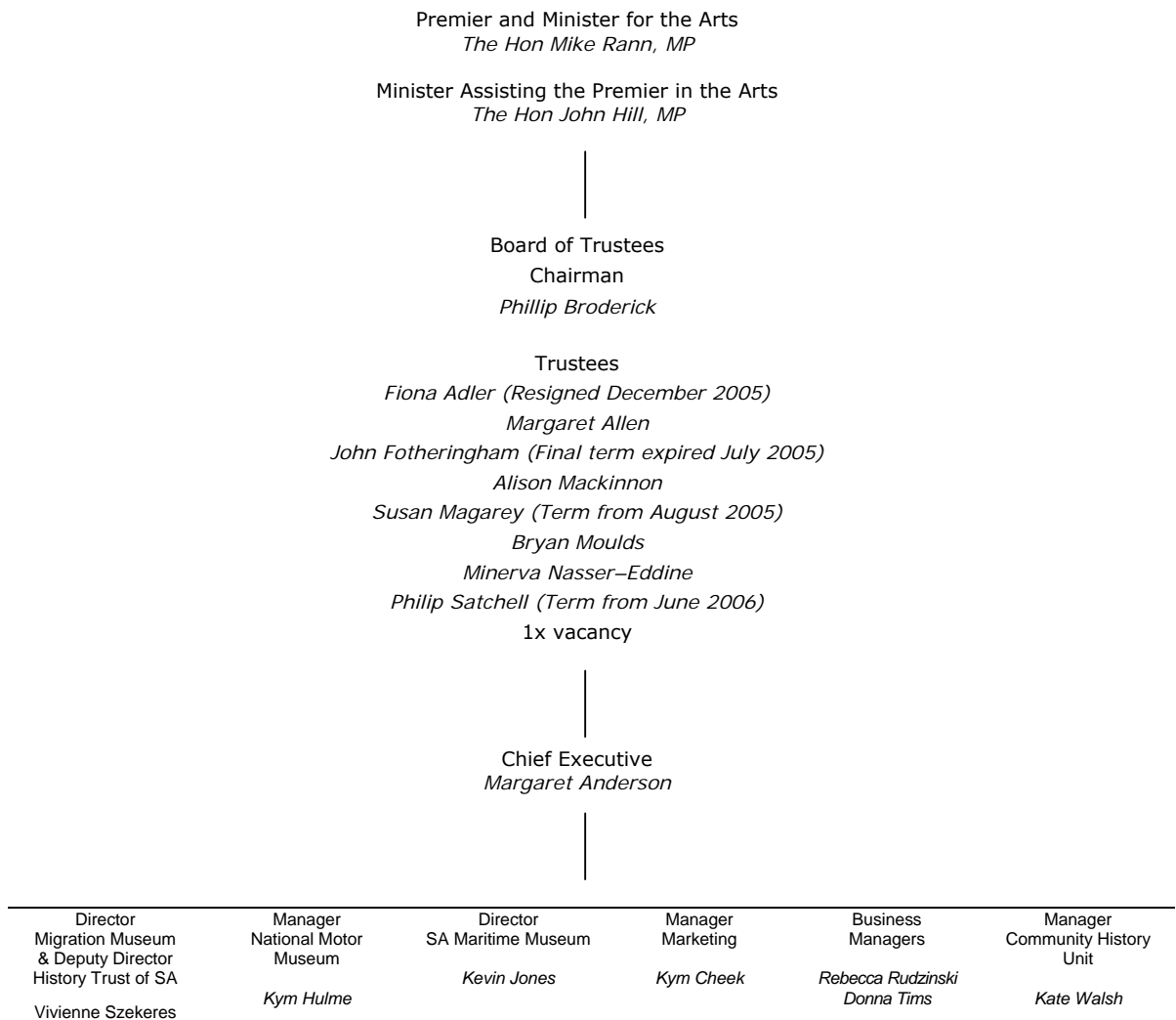
- researching and interpreting South Australia's history;
- preserving and exhibiting South Australia's material history;
- managing museums of its own and assisting the State's community museums;
- encouraging and assisting the work of South Australia's historians and historical societies;
- providing policy advice to the Minister for the Arts on issues of relevance to South Australia's history and material culture.

These responsibilities are realised through the following programs:

- managing three museums and a changing exhibitions gallery which interpret aspects of South Australia's history:
  - the Migration Museum – which preserves and interprets the history of migration to and settlement in South Australia;
  - the National Motor Museum – which manages and interprets a collection representing Australia's motoring history;
  - the South Australian Maritime Museum – which preserves a collection of maritime heritage objects and interprets the maritime history of South Australia;
  - the History Trust Exhibition Gallery – which presents exhibitions reflecting aspects of the history of South Australia and the city of Adelaide;
- providing advice and assistance to South Australia's 200 community history museums and 150 historical societies, as well as the many individuals who research South Australian history, through the Community History Unit. The Unit also administers two grants programs – the Museums Accreditation and Grants Program (for community museums) and the South Australian History Fund (for South Australian history publications, projects and research);
- managing the State Historical Collection;
- promoting South Australian history and the activities of the History Trust's museums.

## ORGANISATIONAL CHART

History Trust of South Australia as at 30 June 2006



## CHAIRPERSON'S REPORT



The Hon John Hill, MP  
*Minister Assisting the Premier in the Arts*

Dear Minister

I am pleased to present the 26<sup>th</sup> Annual Report of the History Trust of South Australia, for the year ended 30 June 2006. The Board was grateful to receive an increase in operational funding this year and thanks you for your assistance in securing it.

It is gratifying to be able to report once again that the Trust met all its performance targets within budget and to the timelines identified. Visitor numbers at our museum sites increased. Our touring exhibitions in regional South Australia enjoyed high visitor attendances. The Trust's temporary exhibition program mounted 23 exhibitions which were displayed in all three of the Trust's museum sites. Twelve of these were created in-house. We were particularly pleased to be able to send two touring exhibitions to regional museums in the State following liaison with community organisations, including the Returned & Services League (SA Branch). Once again the temporary exhibition program was funded externally by either corporate sponsorship or grants from other agencies. In all, the Trust raised 37 percent of its operating costs externally.

Improved management of the State History Collection has been a priority this year, with a significant investment of Board funds in a new collection management system. The process of transferring information to the new system continues. Once completed, the database will improve internal management and facilitate greater public access to collection information.

The Board remains concerned that it has not been able to address a number of continuing infrastructure issues at the Trust's heritage sites. The Birdwood Mill building at the National Motor Museum was closed for public safety reasons two years ago and the airconditioning system at the South Australian Maritime Museum has been partially out of service since October 2005. The latter compromises the long-term preservation of a portion of the maritime heritage collection. The Board continues to urge that these issues be addressed as priorities of Government.

The History Trust Board met regularly throughout the year. We were sad to farewell Board member Mr John Fotheringham in July 2005. He retired after nine years conscientious service. Ms Fiona Adler resigned in December due to increased commitments outside the State. We thank both for their contribution and for their continuing interest. New members welcomed during the year were Professor Susan Magarey and Mr Philip Satchell.

I express thanks to my fellow Board members and to the Chief Executive and staff of the History Trust. The Board thanks you for your support and continued interest in the Trust's programs.

PHILLIP BRODERICK  
Chair

## CHIEF EXECUTIVE'S REPORT



2006 marked the Trust's 25<sup>th</sup> birthday and we celebrated with a busy and varied program of exhibitions and events on all sites. Our small team excelled themselves in the range of projects presented and it was very pleasing to see visitor numbers increase overall as a result. In all, a total of 305 804 people attended one of our programs – an additional 2 400 since last year. A further 5 348 people in regional South Australia visited one of the Trust's touring exhibitions, presented in a range of centres throughout the State. These visitor figures continue to compare more than favourably with far better funded institutions interstate. There were also notable improvements in the less visible, but equally important, aspect of our legislative charter – caring for the State's historical collection – with a significant investment from Board funds in a new collection management database. Programs presented continued to contribute to several objectives in the State Strategic Plan, notably wellbeing, fostering creativity and building communities. All in all, the Trust's staff can be justly proud of their achievements.

---

### Exhibition and public programs

---

A continuous program of exhibitions and events was offered at all sites of the History Trust during the year. We were particularly pleased with the success of this year's *SA History Week* program, which also trialled a new component – *SA Open Heritage*. Open Heritage was the brainchild of Minister John Hill, who was impressed with a similar, very successful program in the United Kingdom. The Trust worked in close association with the Heritage Branch of the Department for Environment and Heritage, which also provided funding for the week-long program of events. Other important partners were Adelaide City Council, the University of Adelaide and the National Trust (SA Branch), along with our sponsors from previous years – Messenger Community Newspapers, Channel 9 and 891 ABC Radio. Participation in History Week doubled this year, to include nearly 200 organisations, offering 270 separate events. We estimate that a total of 35 000 South Australians participated in at least one event during the week, reflecting its enhanced public profile. The combination of television and radio promotion, with Messenger's highly successful wraparound in the week preceding History Week, were key factors in its success. Continuing support for *SA History Week* reflects a strong and growing community interest in knowing more about their history and heritage. The program contributed very effectively to the State's strategic objectives improving wellbeing and building communities.

### Exhibition program

One of the principal ways in which the Trust communicates South Australian history is through exhibitions and related programs in our four exhibition sites. This year's program was particularly varied, with a range of temporary exhibitions presented and a significant additional touring presence reaching out to regional South Australia. The South Australian Maritime Museum has been particularly successful in recent years in attracting both sponsorship and grants funding for its changing exhibition program and this year saw it curate two significant exhibitions drawing on the heritage collections held by a range of South Australian collecting institutions. The first, *Wrecked! Tragedy and the Southern Seas*, drew on the Museum's own significant collection, along with an important collection of maritime heritage held by the Heritage Branch of the Department for Environment and Heritage. That collection has now been transferred to the Maritime Museum. The dramatic stories told in this exhibition proved very popular with the Museum's audience. *Wrecked!* is now touring regional South Australia before travelling to Warrnambool, Canberra and Sydney, with the assistance of Federal funding through the *Visions of Australia* program. Additional Visions funding will allow the Museum to develop a new exhibition on the history of the River Murray, in association with the Australian National Maritime Museum in Sydney.

Wrecked! was followed in the Museum by *South Australia on the Map 1606 to 2006*, an exhibition which drew on many of the treasures held in South Australia, including the State Library of South Australia and the libraries of the Universities of Adelaide and Flinders. This exhibition was South Australia's contribution to a national program commemorating 400 years of European exploration of Australia, beginning with the voyage of the Dutch ship *Duyfken* in 1606. The visit of a replica of the *Duyfken* to Port Adelaide during History Week was a very popular addition to this program.

Grant funding was also an important component in exhibitions offered at the Migration Museum, the National Motor Museum and the History Trust Exhibition Gallery at the Torrens Parade Ground. The Migration Museum partnered with the Departments of Health, Families and Children's Services and Education to produce *Three Sides of the Coin: Gambling in South Australia*, while the Motor Museum received funding from the Motor Accident Commission to construct a safe driving interactive module, designed to encourage better driving practices. Both displays proved very popular and were designed to contribute to important Government social initiatives. The assistance of Holden Ltd continues to be of enormous importance to the Motor Museum and we thank them for their continuing support. A popular exhibition about the history of car design, *Inspiring Passion: Design by Holden*, was developed with Holden's assistance in this period.

*Gallipoli: the South Australian Story* was presented in the Trust's Exhibition Gallery at the Torrens Parade Ground, with the assistance of the Department for Veterans' Affairs and the Returned & Services League (SA Branch). As the title implies, it documented South Australians' experience of and contribution to, the Gallipoli campaign. Much of the material presented provided a new perspective on this significant conflict and ensured that the specifically South Australian aspect of this story was preserved into the future. A small travelling exhibition was also produced to tour regional museums. So far this has visited eight museums, with five more to follow in the next year. A three day conference, to explore aspects of South Australia's history during the Great War and in the decade following, was also planned during this period as an adjunct to the exhibition.



Cutting the History Trust's 25<sup>th</sup> birthday cake during the State History Conference  
L-R Prof Susan Magarey, Prof Dean Jaensch and Margaret Anderson



### **The 'permanent' galleries**

Important as changing exhibitions are to modern museums, it is still the permanent displays that present the main story and provide continuity. Refreshing these displays and ensuring currency of information is important, but also a challenge without specific exhibition funding. Government's commitment to funding the completion of the Migration Museum's redevelopment in this year was therefore of utmost importance. Great progress has been made in this process of renewal, which concentrates on the story of migration in the twentieth century. Much has changed in South Australia since the original galleries opened to the public in 1986 and this refurbishment will allow the history of many recent immigrant groups to be presented. The refurbished galleries are due to open in early 2007.

The National Motor Museum has also begun to reorganise some of its permanent displays to better interpret the development of motor vehicles and the history of motoring in South Australia. The assistance of the RAA has been particularly appreciated in this context.

The Trust's challenge is now to work towards a major refit of the South Australian Maritime Museum, whose permanent exhibitions also opened to the public in 1986. Although some elements of these displays retain their public appeal, others show distinct signs of their age. National benchmarks in museum practice suggest that 'permanent' exhibitions should be refreshed at least every 10 years, although many interstate and international collecting institutions aim at five. Capital funding to redevelop the Maritime Museum is therefore now an urgent priority.

### **Education programs**

Communicating South Australian history to our children is an important component of the History Trust's mission and we attach great importance to the programs managed by our two education officers. These programs are offered through the Migration Museum and South Australian Maritime Museum and are funded by the Open Access College, Department of Education and Children's Services. We value our relationship with the College and endeavour to work closely with officers from that agency to ensure that the programs we offer align with their curriculum goals. This year has been particularly productive at both sites, with new programs offered and an increase in student numbers. In all, a total of 39 801 children participated in a program at one of these museums. In the absence of an education officer at the National Motor Museum or for the History Trust Gallery, the Trust has attempted to devise complementary programs as adjuncts to exhibitions. The new Motor Accident Commission interactive display at the Motor Museum has great potential for future programs and we are currently exploring possible developments there. Similarly, a joint program with the Migration Museum was offered for a limited period during the Gallipoli display.

---

### **Nurturing South Australian history**

---

Initiatives begun last year to encourage the research and writing of South Australian history continued in this year. A further conference in our 'no-frills', free conference series was planned to build on the Gallipoli exhibition. Kate Walsh and Margaret Anderson also began editing a publication, drawing on the papers presented to the first conference in this series – *Adelaide Snapshots: The City in Focus 1850-1880*. This book will be published by Wakefield Press. Both conferences have stimulated South Australian historians to conduct and present original research.

With the generous support of Prof Susan Magarey, the Trust again offered the Catherine Mary Gilbert Prize for an essay, or piece of creative writing, on the history of Adelaide. The winner for the second time this year was professional historian Patricia Sumerling, for her excellent essay 'Madam Harpur – the trials and tribulations of an Adelaide doctress', which documented the extraordinary career of a female abortionist, practising in Adelaide at the turn of the twentieth century. She wrote a lively story that also documented an important, little-researched aspect of women's history. Research and publication grants were also an important component of this year's South Australian History Fund grants, with four research grants awarded to original research projects and six grants to assist publications. Although the South Australian History Fund is very small by national standards (only \$35 000), it makes a tremendous difference to research and writing in South Australian history.

### **Community history museums**

The History Trust administers the oldest support program for community history museums in Australia, the Museums Accreditation and Grants Program (MAGP), first established in 1982. Over the years this program has made a crucial contribution to preserving and presenting the State's regional history. In the past three years staff of the Community History Unit have conducted a comprehensive review of the program, endeavouring to align community museum standards in South Australia with proposed national benchmarks in the sector. This has involved an enormous effort, with some 50 field trips to conduct assessments and deliver training workshops at museums all over the State. It has also asked a great deal of many voluntary museum committees, who have been encouraged to review and improve their procedures for managing collections and presenting exhibitions. To date 61 museums have re-registered in the program, with others still in process. Of these, eight museums have reached the higher standard of accreditation and serve as exemplars for others.

Although the MAGP is always significantly over-subscribed, the grants awarded make an important difference to volunteer, community-managed museums, particularly in funding exhibition programs. We were very pleased to see the conclusion of a number of important exhibition projects this year, including in particular the opening of an innovative exhibition at the Melrose Courthouse Heritage Centre, produced in collaboration with the Nukunu People's Council. This exhibition explores aspects of the Nukunu experience of Melrose's history and will make an ongoing contribution to Reconciliation in the area. It provides a notable example for other regional community museums of the potential of such community collaboration. Through programs such as this, the History Trust continues to assist in building sustainable communities, particularly in regional areas.

---

### **The State Historical Collection**

---

The Trust has responsibility under the Act for care of the State's movable heritage and for advising Government on the management of any significant historical items in public ownership. Whereas the State's documentary record is secured under the State Records Act, the same protection is not afforded to significant artefacts, with the consequent danger that these might be lost to the State. A recent legislative amendment strengthened the capacity of the Trust to act in this area and the Trust will continue to advise the Minister on appropriate means of securing important items of State heritage.

In the meantime, the capacity of the Trust to document and manage the State Collection is improving substantially, as curators progressively transfer collection information from a number of separate databases onto a new, more sophisticated collection management system, known as KE-EMu. This system is consistent with that used by other collecting institutions in South Australia and nationally and will ensure that the Trust can meet its audit requirements.

Storage for the State's Collection continues to be an issue of concern. The existing storage areas have currently reached capacity, and the Trust is currently working with Arts SA and other collecting agencies to find a solution that can allow important items of South Australia's heritage to be retained in the State and stored in appropriate conditions.

---

### **Maintaining our heritage buildings**

---

This year will see improvement in the maintenance of one of our heritage sites – that housing the Migration Museum. The redevelopment project now underway there will see a number of significant issues rectified in the next financial year.

However, the Trust lacked the resources to address significant maintenance issues at both the South Australian Maritime Museum and the National Motor Museum. The Mill building at the National Motor Museum remained closed to the public because of safety concerns, while the Trust continued to seek funds for this and a range of building issues at the Maritime Museum.

---

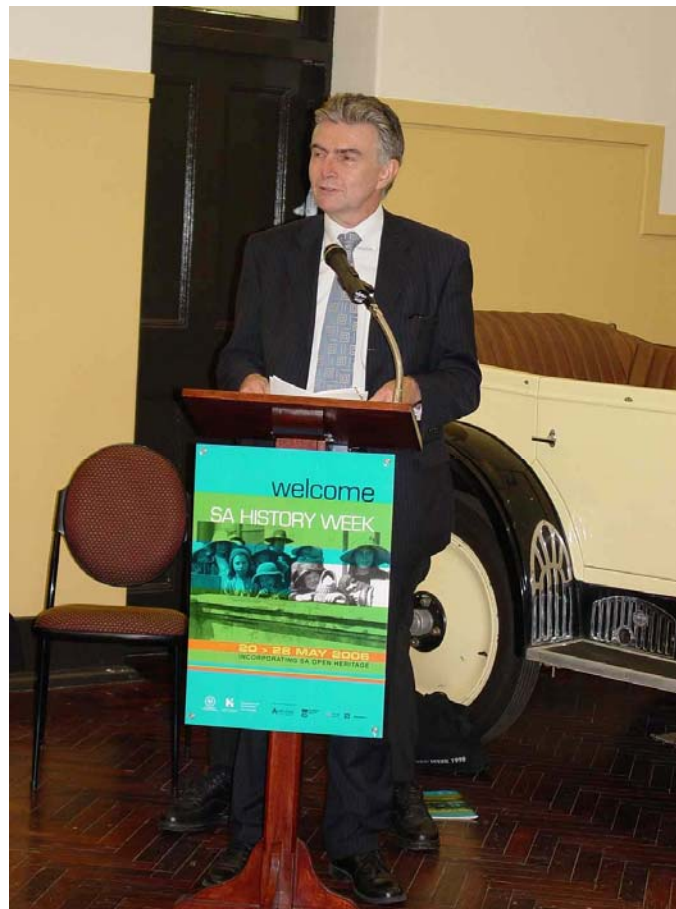
## Conclusion

---

Once again the small staff of the History Trust has managed an extraordinary work program, to present a challenging and popular program of exhibitions and events. I thank them most sincerely for their efforts and for their continuing commitment to advancing South Australian history. My thanks also to Board Chair Phillip Broderick and all Board members for their guidance and support and to our colleagues in Arts SA and Artlab.

Continuing high visitor numbers at our museums, coupled with the outstanding success of initiatives like *SA History Week* and *SA Open Heritage*, confirm the community's continuing interest in discovering and celebrating their past. The History Trust has a unique charter to advance and encourage that interest. As controversy rages on the Federal scene over the health of the nation's history, we are well placed to ensure that South Australia's unique contribution to the national story is preserved.

MARGARET ANDERSON  
Chief Executive



Hon John Hill, Minister Assisting the Premier in the Arts, launching *SA History Week* 2006

## THE YEAR'S HIGHLIGHTS IN SUMMARY

- 305 804 people visited one of the History Trust's sites during the year, with an additional 5 348 visiting one of the Trust's regional touring programs.
- 2006 saw the Trust celebrate its 25<sup>th</sup> birthday.
- In November 2005 the National Motor Museum celebrated 40 years as a museum at Birdwood.
- *SA History Week* doubled in size, with nearly 200 community organisations participating, offering 270 separate events. About 35 000 people attended.
- As part of *SA History Week*, *SA Open Heritage* was a great success, with 87 heritage properties open to the public in this inaugural year.
- 23 new exhibitions were presented across all Trust sites, including 12 curated in-house.
- The South Australian Maritime Museum was successful in attracting *Visions of Australia* funding to tour the exhibition *Wrecked! Tragedy and the Southern Seas*.
- Significant progress was made with the redevelopment of the twentieth century galleries at the Migration Museum.
- The National Motor Museum received funding from the Motor Accident Commission of \$110 000 to build a new interactive display looking at the issues of speed, tailgating, mobile phones and attentive driving techniques.
- The 15<sup>th</sup> State History Conference attracted 200 delegates to two days of stimulating papers in Adelaide in May.
- Trust curators made significant progress in transferring collection management data to a new greatly improved collection management system – KE-Emu.
- The Community History Unit concluded its three-year review of all museums in the Trust's Museums Accreditation and Grants Program and confirmed 61 museums in the program.
- A successful collaboration with The Le@rning Federation saw 150 items from the Trust's collection digitised and interpreted for incorporation in an Australia-wide web-based teaching resource.
- The History Trust raised 37 percent of its operating income from external sources.
- Booked school visits to Trust museums increased by 4 000 to 39 801.
- The National Motor Museum managed two successful events – the *Bay to Birdwood Classic* and the *Rock and Roll Rendezvous*.
- Progress continued in implementing and monitoring systems to improve Occupational Health, Safety and Welfare.



Members of the Victoriana Society attending the launch of *SA History Week 2006*

## REVIEW OF OBJECTIVES 2005–2006

Refer South Australia's Strategic Plan (SASP) and the History Trust of South Australia Business Plan 2005–2007

In 2005–2006 the History Trust planned to:

✓ = Achieved

- **co-ordinate a program of community events for *SA History Week* in May 2006** ✓  
[SASP Objective 3: Building communities – Community cohesion. SASP Objective 6: Fostering creativity - Learning]
- **pilot a program of heritage open days as part of *SA History Week*** ✓  
[SASP Objective 3: Building communities – Community cohesion. SASP Objective 6: Fostering creativity - Learning]
- **complete the first stage of the Migration Museum Redevelopment, Phase III**  
[SASP Objective 3: Building communities – Community cohesion. SASP Objective 4: Growing prosperity – Tourism]
- **present a program of temporary exhibitions at each of the Trust's three museums** ✓  
[SASP Objective 3: Building communities – Community cohesion. SASP Objective 4: Growing prosperity – Tourism]
- **deliver education programs at the Migration Museum and South Australian Maritime Museum** ✓  
[SASP Objective 2: Expanding opportunity – Education]
- **co-ordinate a program to mark the 150th anniversary of Responsible Government in South Australia** ✓  
[SASP Objective 2: Expanding opportunity – Education. SASP Objective 3: Building communities – Community cohesion]
- **present a State History Conference in Adelaide and the second of a series of themed history conferences at the Torrens Parade Ground** ✓  
[SASP Objective 2: Expanding opportunity – Education/skills development. SASP Objective 6: Fostering creativity]
- **work with The Le@rning Federation to provide a block of collection stories for Education Department websites Australia-wide** ✓  
[SASP Objective 2: Expanding opportunity – Educational resources]
- **complete the review of the Museums Accreditation and Grants Program** ✓
- **undertake a program of collaborative training workshops with Artlab Australia** ✓  
[SASP Objective 2: Expanding opportunity – Education/skills development]
- **complete the third year in a ten-year cycle of sighting History Trust collection objects** ✓
- **continue advocacy for improved funding for facilities management particularly for the History Trust's heritage assets, collection storage and exhibition funding** Continuin  
g
- **continue to implement the OHS&W strategic plan** ✓
- **continue to manage the Queen's Theatre for Arts SA** ✓  
[SASP Objective 6: Fostering creativity]

## MAJOR OBJECTIVES 2006–2007

Identified in the History Trust of South Australia 2006–2009 Business Plan and with reference to South Australia's Strategic Plan (SASP).

Subject to funding in 2006-2007 the History Trust intends to:

- **co-ordinate and promote *SA History Week* in May 2007**  
[SASP Objective 3: Building communities – Community cohesion]
- **complete the Migration Museum redevelopment**  
[SASP Objective 4: Growing Prosperity – Tourism]
- **present a program of temporary exhibitions at each of the Trust's sites**  
[SASP Objective 3: Building communities – Community cohesion. SASP Objective 4: Growing prosperity - Tourism]
- **continue a program of touring exhibitions in regional South Australia and interstate**  
[SASP Objective 3: Building communities – Community cohesion. SASP Objective 4: Growing prosperity - Tourism]
- **deliver relevant education programs at the Migration Museum and South Australian Maritime Museum**  
[SASP Objective 2: Expanding opportunities - Education]
- **develop education programs at the National Motor Museum and for the History Trust Exhibition Gallery**  
[SASP Objective 2: Expanding opportunities - Education]
- **present a conference on Democracy in South Australia in March 2007 and plan for the 16<sup>th</sup> State History Conference**  
[SASP Objective 2: Expanding opportunities – Education/skills development]
- **progress two new publications on South Australian history**  
[SASP Objective 2: Expanding opportunities – Education/skills development]
- **continue collaborative training workshops in regional South Australia with Artlab Australia, County Arts SA and the State Library of South Australia**  
[SASP Objective 2: Expanding opportunity – Regional skills development]
- **complete the transfer of collection management data to KE-EMu database**
- **progress urgent building maintenance priorities at the National Motor Museum, South Australian Maritime Museum and Migration Museum**
- **continue advocacy for improved funding for facilities management, particularly for the History Trust's heritage assets, collection storage and exhibition funding**
- **work with Arts SA to achieve a more satisfactory outcome for storage of the State History Collection**
- **continue to implement the OHS&W strategic plan**
- **continue to manage the Queen's Theatre for Arts SA**  
[SASP Objective 6: Fostering creativity]

## COMMUNITY HISTORY UNIT

*The Community History Unit is based within the History Trust Directorate. In order to achieve the History Trust's key goal of promoting the value, understanding and enjoyment of South Australian history, the Unit manages a history resource centre that provides advice and assistance to researchers, historical societies, museums and the general public on South Australian history and historical sources. The Unit organises two annual events, SA History Week and the State History Conference, manages the exhibition program in the History Trust Exhibition Gallery and produces a magazine on South Australian history. The Unit also holds a significant photographic collection, the South Australian Glass Negatives Collection.*

*The Community History Unit manages the Museums Accreditation and Grants Program (MAGP), which supports the State-wide network of community history museums in their efforts to document, display, interpret, preserve and promote their local history and material heritage. It also administers the South Australian History Fund (SAHF), which supports research, publications and projects on South Australian history. There is a particular focus on regional South Australia.*



Disaster Preparedness and Response salvage training at Mount Gambier

## COMMUNITY HISTORY UNIT

The year has been busy and challenging, but at the same time productive and rewarding. The third *SA History Week*, which incorporated the new *SA Open Heritage* program, was a great success and the 15<sup>th</sup> State History Conference in Adelaide attracted a high number of delegates. The comprehensive review of MAGP museums concluded, after a full schedule of regional field trips. Research and design for the next exhibition, opening in October 2006, was in full swing during the second half of the year. The digitisation project for the Glass Negatives Collection gathered pace. The Unit also managed the History Trust's contribution to The Le@rning Federation, a nationally-funded digital education resources website.

---

### History in the community

---

The third *SA History Week* was held from 20 to 28 May. The program doubled in size this year, with many new participants, indicating growing community awareness and support. Open days, talks, tours, displays and other special events were among the 270 activities presented by close to 200 organisations and individuals. The new *SA Open Heritage* component, jointly presented with the Department for Environment and Heritage, attracted particular interest. Based on the evaluation forms returned after the event, the History Trust estimates that 35 000 South Australians attended *SA History Week* activities. The History Trust appreciated the efforts of around 1 400 volunteers who organised events for their local communities and visitors. *SA History Week* became for a third time a perfect means to promote the role of the History Trust in fostering public awareness of South Australia's history. It appears to be firmly embedded in the South Australian calendar. Participating organisations indicated that History Week provided them with increased credibility, leverage and community profile, especially at a local level. The widespread coverage through the involvement of media sponsors, Messenger Community Newspapers, Channel 9 and 891 ABC Adelaide, ensured the event's success. Messenger Community Newspapers' special 'Working Life' photographic wraparound for its metropolitan papers was especially popular.

The culmination of *SA History Week* was the 15<sup>th</sup> State History Conference, *In History We Trust*, held at the University of Adelaide, 26-28 May 2006. The Conference attracted 200 delegates who enjoyed a diversity of papers reflecting on the way that the State's history has been written and presented, from local, national and global perspectives. The conference was also an opportunity to celebrate the History Trust's 25<sup>th</sup> birthday. Sponsors for the 2006 Conference were Albox Australia, Disk-Edits, State Records, Department for Environment and Heritage and the History Council of South Australia. Sponsorship ensured that the History Trust was able to hold this popular annual conference without raising fees to a prohibitive level for the history sector's volunteers.

Community History Unit staff produced three issues of the magazine, *History Matters*, which maintained its popularity with history enthusiasts, and handled hundreds of requests for information, photographic images and advice from the general public, the media, researchers and community history groups on a wide range of history and museum-related topics. The Unit sponsored the use of 200 images from the Glass Negatives Collection to illustrate Geoffrey Manning's second edition of *Manning's Place Names of South Australia*.

The Unit maintained a close working relationship with other related agencies and organisations, including Artlab Australia, Heritage Branch (DEH), State Records, State Library of South Australia, South Australian Tourism Commission, National Trust of South Australia, Historical Society of South Australia, Professional Historians Association, Oral History Association (SA Branch), History Council of South Australia, National Archives of Australia, Museums Australia and the Collections Council of Australia.



---

## Exhibition and public programs

---

### History Trust Exhibition Gallery

The exhibition, *Gallipoli: The South Australian Story* was open to the public throughout the year. A special open day on Anzac Day proved popular. The associated travelling display toured to eight Museums Accreditation and Grants Program regional and metropolitan museums. The display gave these venues the opportunity to attract new visitors and participants. A further five venues will host the display later in 2006.

Research and design work commenced on the exhibition, *The Voice of the People: Democracy Comes to South Australia*, which will open in the History Trust Exhibition Gallery in October 2006. This exhibition, a joint project with the State Electoral Office, will mark the 150<sup>th</sup> anniversary of the 1856 Constitution and Electoral Acts, which introduced Responsible Government to South Australia. This is a highly significant anniversary and the History Trust has been grateful for the enthusiastic support of the State Electoral Office, Parliament House, Government House, State Records and the State Library of South Australia.

In November the 2004 exhibition, *An Adelaide Snapshot 1865: Townsend Duryea's Panorama*, was converted into a mobile format for permanent display in the Drill Hall, doubling also for use as screens within the Hall.

### Museums Accreditation and Grants Program (MAGP)

The review of the Museums Accreditation and Grants Program (MAGP) and its registered and accredited museums concluded at the end of June, after a full round of regional field trips. Close to 50 field trips were made to conduct site assessments as part of the review, to assist with policy writing or strategic planning and to present workshops as part of essential skills development for this largely volunteer sector. The primary focus of the six issues of *MAGP News* was on providing advice to museums during the review process. The review enabled the History Trust to gain a comprehensive overview of the position of, and issues facing, local and specialist museums across the State. Registered and accredited museums were required to update their operations, programs, policies and procedures to reflect more closely currently accepted museum management practices. The MAGP museums found this exercise initially daunting, although ultimately rewarding. In many instances, there was a discernible and positive shift in attitudes about museum management, which will place South Australia's regional and specialist museums in a good position in the future. The review has also assisted the History Trust to plan its future strategies for regional and specialist museums.

In this financial year two museums joined the MAGP Mallala & Districts Historical Society's Museum and the Army Museum of South Australia.



Kate Walsh opening new displays at Radium Hill Museum - the most remote museum in the MAGP

During the months of September to November, the History Trust and Artlab Australia delivered a series of special workshops on Disaster Preparedness and Response to representatives from 22 museums and historical societies in the South-East and on Eyre Peninsula. These workshops were funded by the Premier through Arts Industry Development Initiatives (2005) in response to bushfires on Eyre Peninsula and an arson attack at Millicent National Trust Museum, the aim being to ensure the safety and preservation of significant local and regional collections.

*Ports of Call*, a Museums Accreditation and Grants Program collaborative project, opened at the South Australian Maritime Museum in October 2005. This project gave the State's regional maritime museums an opportunity to showcase their significant collections to a wide audience in a major State museum.

In the 2005-06 MAGP grant round, 36 museums applied for funding for 46 projects totalling \$248 640. Thirty-four projects were recommended for funding, in particular those that related to the museums' strategic plans and were clearly aimed at improving museum standards. Major projects included the redevelopment of displays at Mallala Museum and The Sheep's Back Museum (Naracoorte), Norwood History Centre's display on Italian immigrants, *Stories from the Heart* and conservation treatment on the highly significant Wallaroo Waterside Workers' banner. Two newly accredited museums, Ayers House and The Embroiderers' Guild Museum, received \$5000 accreditation grants. The remainder were a variety of infrastructure, storage, small display and collections management projects, including two Regional Preservation Fund grants, which are jointly funded with Artlab Australia.

### **South Australian History Fund**

In the \$35 000 South Australian History Fund, the History Trust allocated funding to 20 projects, from 75 applications seeking funding totalling \$181 679. Four research applications, from professional historian Pauline Payne, architecture historians Christine Garnaut and Julie Collins and the University of South Australia and the South Australian Link-Up Program, were successful. Six publication applications attracted funding for publication including a biography on W R Penhall, Aboriginal Protector (1935-53), on the history of St Jakobi Lutheran School and on the Eyre Peninsula railway system. Successful project grant applicants included Dublin History Group, Royal Agricultural & Horticultural Society of SA, Mt Lofty & Districts Historical Society and Mt Gambier Heritage and History Society to purchase archival storage materials, and Tintinara Hall Committee to undertake conservation treatment on a theatre backdrop painted by artist Otto Hewett in 1931.

---

### **Collection management**

---

Information Resources Manager Lynn Drew and Public Programs Officer Jan Mudge put considerable effort into preparing the Directorate collection and the Glass Negatives Collection for transfer to the new History Trust database system, KE-EMu. The much-anticipated project to catalogue and digitise the 14 000 images held in the Glass Negatives Collection commenced early this financial year. The data entry of catalogue information will be completed by early August 2006 and the digitisation of the images by the end of 2006.

The Community History Unit co-ordinated the History Trust's contribution to the Digital Resources Project of the Le@rning Federation. The Le@rning Federation is an initiative of federal, state and territory governments and the Government of New Zealand to develop online curriculum content for Australian and New Zealand schools in six agreed curriculum priority areas. The online database contains images of significant documents, objects and photographs held in Australia and New Zealand's cultural institutions and collections. The History Trust is contributing 150 items to the database. The Le@rning Federation website provides some wonderful resources for teachers to explore with their students. Each item or image is described and its educational value and use is explained.

Community History Officer, Amanda James, contributed to a national curatorial reference group, drawn from Australia's leading cultural institutions, to advise Telstra on the future placement and management of Telstra's historical collections.

---

**Resource management**

---

Mandy Paul was appointed to the position of Curator (0.5) in November 2005, with a primary focus on the exhibitions program for the History Trust Exhibition Gallery.

Amanda James continued to assist the History Trust as an internal auditor for WorkCover compliance.

Performance reviews were conducted in September 2005 and April/May 2006.

Staff attended training and professional development opportunities in a variety of areas, including Disaster Preparedness and Response, preventive conservation, interpretation, copyright, writing skills, grants management, computer software and training in the new KE-EMu database. Amanda James and Kate Walsh attended the Museums Australia National Conference in Brisbane in May 2006.

The Community History Unit acknowledges the contribution of the Trust's Marketing and Business Units to the successful and efficient delivery of its public programs.

---

**Conclusion**

---

The Community History Unit remained heartened by the strong ongoing support for our programs within the South Australian history network and general community. This year's Conference attracted a record number of delegates and *SA History Week* enjoyed greatly increased community participation. The review of Museums Accreditation and Grants Program museums yielded significant results for the community museum sector and for the Trust's future delivery of programs to these important local, regional and specialist museums.

The year's successes can be attributed to the enormous efforts of the Unit's small but dedicated staff who approach their work with vision, commitment, energy and flexibility.

KATE WALSH  
Manager, Community History Unit

## MIGRATION MUSEUM

*The Migration Museum opened in December 1986 as a social history museum with an innovative mission to collect, preserve, document and interpret the history of South Australia's immigrants. Its challenging brief has been met over its 19 years through a vibrant, creative and popular program of changing exhibitions, educational tours and special events, as well as the development of a significant collection of objects with particular strengths in documents and textiles. The Museum has worked closely with individuals and community groups to achieve its goals and is well-known and highly respected among South Australian communities. In addition the Migration Museum is a key destination for both overseas and interstate visitors.*



Visitors to the exhibition, *Three Sides of the Coin*

## MIGRATION MUSEUM

Once again the Migration Museum has had an exceptionally busy and highly productive year. It began with a visit from the Premier the Hon Mike Rann, who announced that the Museum had received a grant to complete the redevelopment of its main galleries. The design, research and curation of the new galleries has therefore been a major focus for Museum staff this year. In November the contribution of British child migrants to South Australia was recognised by the installation of a memorial and plaque. In June, Her Excellency Marjorie Jackson-Nelson, AC, CVO, MBE unveiled a bronze monument from Italy, *The Immigrants*, before 600 dignitaries and guests. The Right Hon the Lord Mayor of Adelaide Michael Harbison unveiled the dedication plaque. The Museum produced an exhibition on gambling, completed a display project with the Vietnamese community and presented a range of successful education programs both within and beyond the Museum's site.

---

### History in the community

---

As in previous years the Migration Museum has worked with a range of community groups to present its exhibition and educational programs as well as various special events. The Museum has also taken its programs out into the community through talks, lectures, special projects and a touring exhibition. The Forum community access gallery has maintained a high profile throughout the year. Community groups using the Forum included regional groups from Moonta, Radium Hill, the Barossa Valley and Strathalbyn. Other groups were the Campbelltown Historical Society, Flinders University, the Lutheran Church, the Jewish community, the Handspinners and Weavers' Guild of South Australia and the John McDouall Stuart Society. At the end of the year the Forum was booked to 2009.

A strong theme in the Museum's work in the community is the impact of colonisation on Aboriginal groups. The Museum's exhibition *They Took Our Land and Then Our Children: The 1923 Ngarrindjeri Petition* travelled to St Francis School, Lockleys; Unity College, Murray Bridge; Seaford School; Windsor Gardens Vocational College; Tabor College, Goodwood; Marymount College, Hove; Seaton High School and St Frances de Sales College, Mt Barker. The Museum has registered its Indigenous focus programs in the Reconciliation Australian register. As in previous years the multimedia program *Impact of Colonisation on Aboriginal People in South Australia* has been presented to many community groups in rural and metropolitan South Australia and Government agencies including the Courts Administration Authority, Rural Solutions, the Attorney General's Department and Relationships Australia.

The Museum's Director, Curators and Education staff have continued the Museum's outreach programs through talks to community groups and conference papers. Viv Szekeres delivered two conference papers and a university lecture and Christine Finnimore gave a paper at the Museums Australia conference.

---

### Exhibition and public programs

---

Following the Premier's confirmation of a grant to complete the redevelopment of the twentieth century galleries, Viv Szekeres Director, Christine Finnimore Senior Curator and Marg Degotardi, Designer, have worked steadily behind the scenes on the research, curation and design of the new displays which will be launched during the 2006-07 financial year. In addition, the Museum has maintained a high profile showcasing exhibitions produced internally as well as travelling exhibitions produced by other organisations. An important exhibition, *Three Sides of the Coin: Gambling in South Australia*, was developed by Curator Catherine Manning with support from the Health Promotion Branch, Department of Health, the Department for Families and Communities and the Department for Education and Children's Services. A component of the exhibition was provided courtesy of the Powerhouse Museum, Sydney. *Three Sides of the Coin* looks at the rich variety of games played for fun or for very high stakes that have been brought to South Australia by immigrants. The exhibition will also tour to regional areas.

Assistant Curator Jill MacKenzie worked with the Vietnamese community on the South Australian component to the incoming exhibition *Fall of Saigon: Collected Fragments of the Post-75 Generation* from the Casula Powerhouse Arts Centre, NSW. The panels produced for this exhibition are currently on display in the offices of the South Australian Multicultural and Ethnic Affairs Commission. The Museum also mounted *Memories and Dreams: the Banners Project*, an exhibition of its entire collection of community banners which are hugely popular with both visitors and school groups. A small travelling exhibition *Between Memory and Hope – Iraqi Women's Quilts*, attracted many visitors from special interest groups, as did *Egon Kisch*, a display about the eventful visit of Czech journalist and anti-fascist Egon Kisch to Australia in 1934. The continuing program of exhibitions in the Museum's community access gallery, the *Forum*, were *Our Place, Our Part: Campbelltown – Its History and Its People*; *Dear Dr Janzow: Australia's Lutheran Churches and Refugees from Hitler's Germany*; *Spin and Weave a Thread* and *Conquering a Continent*.

The Museum's Education Officer, Rosa Garcia, assisted by Education Guides, delivered a range of innovative and interactive programs and workshops in the Museum's new education space. The new area has streamlined education presentations because it allows for the concurrent running of regular programs in the main galleries and special programs in the education space. In addition to delivering the special programs *Impact of Colonisation on Aboriginal People in South Australia*, *Survivors* and a program on the social history of women's underwear *When Smalls were Large*, the Education staff also ran successful workshops with the Handspinners and Weavers Guild in conjunction with an exhibition in the Forum gallery. A joint project with Paralelo resulted in a series of workshops, *Who's Laughing Now?* for students and teachers by comedian Simon Palomares, also providing an innovative approach to countering racism in schools. The Migration Museum's Curators also selected 40 objects from the collection and provided research and text as the Museum's contribution to a Trust-wide project for The Learning Federation.

---

## Collection management

---

In June 2006 the Migration Museum's collection numbered 6,660 items. During the year 21 donors contributed 59 items, including a Welsh costume brought with immigrants in the 1850s, a woman's jacket brought out with Greek immigrants before 1920, seven trade union banners, a cross stitch embroidery celebrating 30 years of the Vietnamese community in South Australia, a Chinese robe, wedding clothing brought by a Lebanese bride in the 1920s and a rare christening robe featuring Ayrshire work that was brought to South Australia during the first decade of the colony. As in previous years the Migration Museum managed the History Trust's program of conservation with Artlab Australia. While the treatment of objects continued, there has been a strong new focus on preventive conservation, with initiatives in disaster preparedness and training, environmental monitoring and regular pest control checks. The management of the Museum's collection has been assisted by the work of a remarkable group of volunteers. They have carried out a wide range of curatorial tasks, such as accessioning objects, books and photographs, transferring research files onto a database, interviewing members of the South Australian community for the oral history program and sighting and photographing the collection. Curatorial and administrative staff have been involved in the planning and training for the new database system KE-EMu to be used across the Trust's collections. Migration Museum Curator Catherine Manning formed part of the History Trust's team that has managed the intensive work of mapping the changes from the existing database into the new system.

---

## Resource management

---

There have been several changes in the Museum's two administration positions. Rebecca Rudzinski initially shared the position of Operations Manager with Jessamy Benger before transferring to the History Trust to share the position of Business Manager with Donna Tims. Jessamy Benger went on maternity leave in January and was replaced by Suzanne Ball from the Directorate. The position of Administration Officer has been filled by Suzanne Redman. A member of the Education staff, Georgia Heath, took up a position of Administrative Officer at the Directorate.

The Museum supervised two overseas interns during the year. Jill MacKenzie won a Canadian Museums' Association internship to spend six months in the Migration Museum working on an exhibition project with the Vietnamese community and Stefano Antichi was a volunteer intern from Italy, who spent three months working with the Italian community on a project for the Museum's redevelopment.

Viv Szekeres served on the Arts Industry Assessment Panel and on the Board of Carrick Hill. Christine Finnimore served on the Board of the Multicultural Communities Council of South Australia and is a member of the committee for Museums Australia, South Australian Branch. Catherine Manning has been a committee member for the Oral History Association of Australia South Australian Branch.

The dedicated work for nearly 20 years by volunteer Glenys Edwards received special recognition in a Premier's Award. Museum staff were saddened by the death of volunteer Lizzie Russell, who was nominated this year for the inaugural South Australian award for the Oral History Association for the work she carried out with the Museum and the Association.

---

## Conclusion

---

The year has brought many positive outcomes for the Museum. The research and design being carried out for the new galleries has been able to incorporate recent historical scholarship and design technology to provide a strong basis for the Museum's future public programs. The redevelopment has also enabled the Museum to work with newly arrived communities from the Middle East and Africa. There has been an increased demand for the high quality, curriculum-based education programs offered, with a consequent increase in student numbers and revenue raised. In addition the Museum's database of the histories of community groups in South Australia is now available for schools and the public on CD-ROM. Migration Museum staff valued the opportunities to work with staff from other divisions for the two Trust-wide database projects of KE-EMu and The Le@rning Federation.

VIV SZEKERES  
Director

**Migration Museum** — 82 Kintore Avenue, Adelaide 5000  
Telephone: +61 8 8207 7570 Fax: +61 8 8207 7591  
Website: [www.history.sa.gov.au](http://www.history.sa.gov.au)  
Email: [migration@history.sa.gov.au](mailto:migration@history.sa.gov.au)

Admission by donation

### Guided Programs

1:00hr \$3.00

1:50hrs \$4.50

2:00hrs \$6.00

\$20.00 per group for disadvantaged schools from DETE, ESL, Special Education classes

### Opening Hours

10:00am—5:00pm Monday to Friday

1:00pm—5:00pm Weekends and Public Holidays

Closed Christmas Day and Good Friday

## NATIONAL MOTOR MUSEUM

*The National Motor Museum's reputation as the centre for Australian motoring history continues to grow – a long way from its beginnings as a small private motorcycle museum in a disused flourmill in 1965. Its acquisition by the State Government in 1976 and subsequent incorporation into the newly formed History Trust of South Australia in 1982, laid the foundation for the development of a museum of international standing and a major South Australian tourism attraction.*

*The Museum today displays over three hundred vehicles in two pavilions. It aims to present the history of the motor vehicle in Australia and the ways in which the motor vehicle has changed Australian society.*



Motor Accident Commission Safe Driving Interactive display. Visitors are able to assess their driving speed, tailgating, and attentive driving techniques



## NATIONAL MOTOR MUSEUM

On Sunday 20 November the National Motor Museum celebrated its 40<sup>th</sup> birthday. A free day was held to mark the event and over 150 vehicles from local car and bike clubs came along to add to the festivities. Over 2 000 visitors attended the Museum on that day. There was even a birthday cake cut by Tom Playford, son of the former Premier, Sir Thomas Playford. Other highlights of the year included the Motor Accident Commission funding \$110 000 to build a new interactive display looking at the issues of speed, tailgating, mobile phones and attentive driving techniques. The grant also provided funds to revamp two other safe driving interactives - *Crash Test Dummies* and *Risky Business Café*.

Holden Ltd agreed to sponsor the Museum for an additional 12 months, allowing us to continue promoting the Museum through the media. This is a hugely significant sponsorship to the Museum and we thank Holden for their continuing support.

Health Promotions through the Arts provided funding of \$5 000 to develop a display looking at the 1922 Milburn Electric car, a vehicle marketed specifically to women.

---

### History in the community

---

During the year, staff from all areas of the museum featured in numerous radio, television and print media stories dealing with the museum, motoring history and special events, in both the specialist and general press, in Australia and overseas. Kym Hulme, Allison Russell and Matthew Lombard presented talks about the museum and its practices at a number of car club nights and community events.

Allison Russell and Andrew Applebee took the education program 'Motorworks' to Flinders Medical Centre for patients in the Children's and Mental Health wards. This was extremely successful, and will be offered to other hospitals. The Museum hosted the Australia Day Eve celebrations in conjunction with Torrens Valley Tourism and the Birdwood Commerce Group.

During the year we provided displays at the Adelaide Motor Show, Tour Down Under in Stirling, All Ford Day, Clipsal 500, Greater Union Cinemas at Marion and Arndale and the Mount Pleasant Show.

The Museum also participated in *SA History Week*, with a bonnets open tour and general tour of the collection, while Allison Russell presented a paper on 'Involving Communities in Interpretation' at the State History Conference.

---

### Exhibition and public programs

---

#### Holden Exhibition Gallery

##### *Inspiring Passion: Design by Holden*

*Inspiring Passion* explored the history of car design and the way that the choice of a new car can often be inspired by its design. Cars can inspire passion and desire – desire to own, use and be seen in the car. Car designers know this and take their cues from a wide variety of sources such as first-class airline seats, luxury jet interiors, five-star hotels, and fine watchmakers, to appeal to people who want to project an image of wealth, style and class. Others look for practicality, comfort, economy and durability and car designers produce models that will appeal to this market. The first generation of cars imitated horse-drawn carriages and until the 1920s had a tendency to look like boxes. The aim of the designers at that time was to develop a reliable and affordable vehicle, culminating in the Model T Ford. As cars became the essential object of the twentieth century Western world, an increasing number of competitors used design to improve marketability.

## **Shannons Gallery**

### Way to Go

*Way to Go* was a witty exhibition, tracing the history of our final journey in Australia. Themes explored included ways in which hearses and funerals reflect national cultural preferences. Despite the unusual subject matter, *Way to Go* was an immensely popular exhibition.

### Weird Wheels

This exhibition explored some of the odd-ball vehicle designs to come on the market over the years. Vehicles come in all shapes and sizes, and their visual design is affected by a variety of factors, from tax laws to economies of build; from personal preference to their intended purpose. Today's cars, designed with the aid of computers and to meet certain strict safety criteria, have a certain common look to them. It was not always so.

## **Club Space**

Club Space continued to provide motoring clubs with a forum to display club member vehicles and promote their club activities, with bookings through to the end of 2007. Over the past 12 months, the Museum hosted the Holden Dealer Team 25<sup>th</sup> Anniversary, Citroen Car Club, Oldsmobile and the Torana Car Club.

## **Events**

Once again the *2005 Bay to Birdwood Classic* was a hugely popular event, with over 1 760 vehicles displayed in the grounds of the Museum. Although it was very wet, 9 040 visitors still came – slightly less than in previous years.

The 15<sup>th</sup> *Rock and Roll Rendezvous* was held on Sunday 17 April 2006. The event was a success but visitor attendance figures and vehicle entrants were slightly down on the previous year. Major events within Adelaide and interstate during the previous six weeks influenced attendances.

---

## **Collection management**

---

Museum staff continued an ongoing process of collection review and consolidation during the year. The Museum continues to attract offers to donate vehicles from all over Australia and these offers are the subject of intensive debate by the Museums Acquisitions Committee before any decisions are made. Ultimately, decisions reflect the significance of individual vehicles, their condition and the availability of storage space.

Artlab Australia has been attending the Museum frequently over the past 12 months to assist in the cleaning of vehicles and objects and have constructed special storage boxes for some of the more fragile memorabilia currently in storage. They have also continued to provide training to staff and volunteers in the correct techniques for cleaning the exterior of our vehicles on display as well as disaster management. Artlab has also developed and trialled a conservation management tool to assist in the process of making decisions about conservation of large technology objects.

Additions to the collection included two vehicles from the Toyota Motor Company in Adelaide. The 1998 Toyota Prius was the first Hybrid vehicle imported into Australia by Toyota and the other vehicle is the 2000 Will VI, which is a car not imported into Australia, but developed for the female market in Japan.

## **Deaccessioning**

Identification and deaccessioning of objects continued with duplicate and damaged vehicles and other objects transferred to relevant museums within both this state and interstate. A significant move saw four buses relocated to the Transport Hall of Fame in Alice Springs and the Heritage Bus Association in Queensland.

## **Storage**

Improvement of onsite storage continued with steel shelving for large objects placed in the museum's onsite shedding. This allowed for the improved storage of items, such as engines or petrol pumps, as well as clearing space to improve the storage of larger objects such as the vehicles themselves. However, finding suitable storage remains a high priority for the long-term needs of the Museum.

## **Research**

### Library

The National Motor Museum's library continued to expand through donations from the public, although new guidelines limit the subject matter that will be incorporated within the library. The library has been divided into two parts, a research library that will eventually be a resource for staff, volunteers and visitors and a more restricted collection of books that will only be accessible to staff. One of the museum's volunteers, Peter Stopford, continued the cataloguing of the donations on a weekly basis.

### Research Enquiries

The Museum continued to receive, and respond to, many requests for advice and information from the public, historic motoring clubs, museums and societies. Our current system has streamlined answering enquiries and enabled the use of skilled volunteers Wolfgang Warmer, Chris Bennett, Richard Sage and Darryl Grey.

### Collection Management Training

Collection management issues and ongoing training continued to be a feature of meetings between curatorial and front-of-house staff. This allows the front-of-house staff to better deal with enquiries about both the donation/loan and the removal of loan vehicles.

### Photographic Collection

The Museum has over 30 000 images in the collection with many of the photographs not identified. Dave Richardson, who is a new volunteer, has begun to research the collection.

---

## **Resource management**

---

Staff members attended different training sessions during the year, including Ethical Conduct, Fire and Emergency Procedures, Conflict Resolution, Performance Management and Disaster Preparedness.

Allison Russell replaced Rob Pilgrim as the Senior Curator at the Museum with Matthew Lombard appointed in the permanent position of Curator.

Sue Kuschert, Caroline Barnett and Rijan Scholten were all appointed as Museum Officers.

The following casual Museum Officers resigned during the year - David Chatwin, Ken Harnett, Rijan Scholten, Peter Lines and Mariska Threadgold.

Mark Eckermann has taken 12 months leave without pay to gain further experience in different areas of design work.

Matt Lombard attended the World Forum for Motor Museums in October where he presented a paper entitled 'Out from Down under: Establishing an Australasian Motor Museums Association' which examines the curation of a professional Motor Museum body in Australasia.

Bruno Davids had his Administration position reclassified from ASO-1 to ASO-2.

---

## Conclusion

---

The National Motor Museum continued to grow, with a clear focus on delivering an exciting and enjoyable experience to visitors of all ages. We saw many changes over the past 12 months with staff, exhibitions and displays and with new staff came new ideas. One new direction is an interest in presenting a dimension of women's history to the displays – sometimes something of a challenge!

The Museum is working on developing a new safe driving display as we are located in an area of high road accidents among young drivers. This will give us scope to work further with the Motor Accident Commission, South Australian Police, Country Fire Service and local schools, in developing programs to try to educate more of our visitors in road safety and awareness.

I am confident that with the positive attitude of the staff at the Museum we can only grow stronger and continue to provide an informative approach to the history of motoring in Australia.

KYM HULME  
Manager

**National Motor Museum** — Shannon Street, Birdwood 5234  
 Telephone: +61 8 8568 4000 Fax: +61 8 8568 5195  
 Website: [www.history.sa.gov.au](http://www.history.sa.gov.au)  
 Email: [motor@history.sa.gov.au](mailto:motor@history.sa.gov.au)

### Admission Charges

Adults	\$ 9.00	Concession	\$ 7.00
Children	\$ 4.00	Family	\$24.00

### Opening Hours

9:00am—5:00pm Daily except Christmas Day



1922 Milburn Electric Car

## SOUTH AUSTRALIAN MARITIME MUSEUM

*The South Australian Maritime Museum cares for the oldest nautical collection in Australia, a collection begun in 1872 by the Port Adelaide Nautical Institute. It has earned an international reputation amongst maritime museums and is recognised as one of the premier tourist attractions of South Australia.*

*The Maritime Museum was established in 1986 to collect, preserve, promote and interpret the State's maritime history. The Museum is spread over several sites including the Bond Store exhibition galleries, the Port Adelaide Lighthouse, the Bank administration building and stores at Netley and Dock Two Port Adelaide. It manages three major vessels – MV Nelcebee (1883) the oldest powered ship in Australia, police launch Archie Badenoch (1942) and steam tug Yelta (1949).*



*South Australia on the Map 1606 to 2006 opened in April as the local focus of national commemorations marking 400 years since the first recorded sighting of the Australian continent by foreign seafarers and the first encounter between Europeans and Aborigines.*

## SOUTH AUSTRALIAN MARITIME MUSEUM

Once again, the Maritime Museum's visitor numbers exceeded our target and our result for the previous year. This achievement was a mark of the popularity of our changing exhibitions, education programs, events and tours in our historic vessels.

It was a year in which we focused on outreach to take our programs to the widest audiences. We piloted new technologies with the Department of Education and Children's Services to provide live webcasts to schools. We secured Commonwealth funding to tour our exhibition *Wrecked! Tragedy and the Southern Seas* through regional South Australia and interstate. We also built a partnership with the National Maritime Museum to jointly produce a second national touring exhibition.

---

### History in the community

---

One of the foundations of the Museum's success was its ongoing partnership with Open Access College, which provides a seconded education officer to relate the Museum's programs to school curricula. The success of the partnership was evident in the number of school children visiting, which has grown progressively over the last three years.

As well as programs for students visiting the Museum, Education Officer Liz Murphy introduced a pilot project of live webcasts that took the Museum into class rooms across the State. One webcast, for example, presented an introduction to the Port River dolphins delivered by Dr Mike Bossley of the Whale and Dolphin Conservation Society from his boat on the Port River. Another presented Senior Curator Bill Seager leading classes on a virtual tour of the Museum's store. The programs gave students the opportunity to question experts, see new places and employ new technology.

A major community project for the year was the *Ports of Call* exhibition, which the Maritime Museum produced in association with the History Trust's Community History Unit and museums in Penneshaw, Goolwa, Victor Harbor, Kingston South East, Port MacDonnell and Port Lincoln. The exhibition provided a tour of the coast, relaying histories chosen by local museums and presenting some of the treasures of their collections. The project offered regional museums exposure to a metropolitan audience and, when the exhibition closed in Adelaide, the exhibits were installed in regional museums.

We continued our program of exhibitions in our community access gallery and supported local events such as the first *Flotilla for Kids*, in which our vessels joined a parade of boats on the Port River, drawing public attention to childhood cancer.

With the generous sponsorship of Flinders Ports we were able to present two community access days, on which we offered free admission to the Museum. Those days set records for the largest number of people visiting the Museum in a single day, demonstrating the value of the initiative and the barrier that admission charges can present, especially to disadvantaged groups in the community.

---

## Exhibition and public programs

---

The Museum's active program of changing exhibitions enabled us to explore new areas of maritime history and provide fresh attractions for new visitors.

The year opened with the exhibition *Wrecked! Tragedy and the Southern Seas* which explored the human drama and the histories of wrecks along the southern coast. It was a compelling exhibition of evocative stories and rare artefacts that drew a wonderful response from the audience. Following its success at the Maritime Museum, we secured Commonwealth funding to send the exhibition to Whyalla, Port Pirie, Mount Gambier, Warrnambool, Canberra and Sydney. We also entered into a partnership with SA Water and the National Maritime Museum to produce a national touring exhibition on the history of the River Murray.

Perhaps our biggest attraction for the year was *South Australia on the Map 1606 to 2006*. It was the culmination of a two-year project in which the Museum provided the South Australian focus of a national event. It marked 400 years of exploration from 1606 when Willem Janzoon sailed his 45 ton yacht *Duyfken* to Cape York Peninsula, making the first recorded sighting of the Australian coast by a foreign vessel and the first encounter between Aborigines and Europeans.

The exhibition provided a platform for a series of events that included a visit to Port Adelaide by the *Duyfken* replica, a program of public lectures and a *Festival of Maritime Trades*, showcasing the talents of local shipwrights, tinsmiths, pattern makers and sail makers, who still practise the skills that made exploration possible.

In addition to the exhibitions that the Museum produced in-house, we secured a highly interactive touring exhibition from the National Archives titled *Just Add Water: Schemes and Dreams for a Sunburnt Country*, which took a light-hearted look at the serious question of water conservation.

---

## Collection management

---

A very significant gift to the Museum during the year was the Gavan Berecny Collection. This collection comprises over 400 objects collected from some of Australia's most famous wrecks in the decades before legislation protected historic shipwrecks. It includes an evocative collection from the ship *Nashwauk*, which ran ashore three kilometres south of the Onkaparinga River in May 1855, at the fateful end of a voyage from Liverpool carrying almost 300 Irish emigrants. It also includes artefacts from the clipper *Dunbar* that was lost in an easterly gale while trying to enter Sydney Harbour in August 1857. The collection was transferred from the Department for Environment and Heritage.

Other gifts to the collection included the seafarer's papers of Captain John Germein, who is credited with founding Port Germein in 1840, and a nineteenth century uniform that belonged to a sailor who served on the only ship of the South Australian colonial navy, *HMCS Protector*.

---

## Resource management

---

We continue to owe a debt of gratitude to our sponsors. I would like to acknowledge particularly Flinders Ports, SA Water and TRUenergy. All three companies have now supported the Museum for more than three years. Their continuing commitment has been fundamental to our success and provides a clear demonstration of their belief in the efforts of the Maritime Museum and the value of history in the community.

---

## Conclusion

---

The growth of the Museum's audience reflected growing community interest in heritage and the success of projects, such as the exhibitions *South Australia on the Map 1606 to 2006* and *Wrecked! Tragedy and the Southern Seas*, demonstrates the continuing relevance of maritime history. As a Museum with finite resources, such projects were possible because we focused on the need to look outwards and to build partnerships that brought knowledge, skills and resources to expand our programs.

KEVIN JONES  
Director

**South Australian Maritime Museum** — 126 Lipson Street, Port Adelaide 5015  
Telephone: + 61 8 8207 6255 Fax: + 61 8 8207 6266  
Website: [www.history.sa.gov.au](http://www.history.sa.gov.au)  
Email: [maritime@history.sa.gov.au](mailto:maritime@history.sa.gov.au)

### Admission Charges

Adults	\$ 8.50	Concession	\$ 6.50
Children	\$ 3.50	Family	\$22.00

### Opening Hours

10:00am—5:00pm Daily except Christmas Day

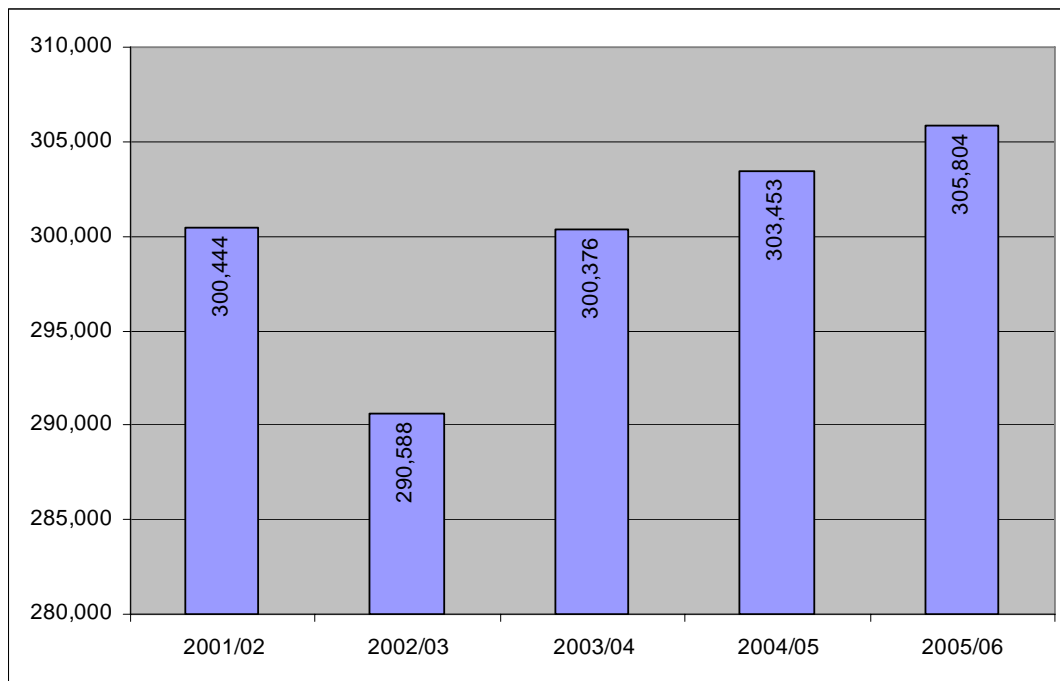
Visitor(s) enjoying the exhibition  
*Wrecked: Tragedy and the Southern Seas*





## MARKETING AND SPONSORSHIP

*The Marketing Unit is based within the History Trust Directorate. It provides marketing services to all divisions of the Trust and assists in securing sponsorships. In addition, it conducts regular visitor surveys and researches tourism trends in South Australia. The History Trust's website is maintained and updated by the Unit.*



## MARKETING AND SPONSORSHIP

The Marketing Unit experienced a period of transition during the first six months of the financial year due to the change in position of Marketing Manager. Doreen Bate left the Trust at the start of the year, leaving Lee Tillett to act as Marketing Manager. I congratulate Lee for effectively managing the Marketing Unit solo whilst the Marketing Manager position was filled. I also thank Doreen for her long standing practices, which not only assisted Lee, but also provided me with a streamlined introduction to the Marketing Unit in early December 2005.

I am pleased that over 305 800 people experienced a Trust attraction during 2005–2006, which represents an increase of 2 400 over the previous year. The South Australian Maritime Museum and Migration Museum both saw a slight increase from 2004–2005, whilst the National Motor Museum experienced a slight decrease of 2 per cent. The History Trust's Exhibition Gallery decreased by 15 per cent, while the Queen's Theatre's patronage increased by 9 per cent. Both the National Motor Museum and the South Australian Maritime Museum exceeded their target visitor figures of 65 000.

Marketing activity continued to be based around the Museums' changing exhibition programs and during the early part of the year, there was a focus on television advertising, thanks to Channel 9's ongoing support. During the latter half of the year, radio advertising was explored in addition to television, and this proved to be a successful strategy. Considerable effort was also taken to ensure that the Trust's website was maintained as an accurate source of information on exhibition and event programs. During the financial year, the site received nearly 8 000 000 hits and 160 000 visits.

In April 2006 Keith Conlon agreed to represent the Trust as a Media Ambassador on Channel 9 and Radio 5AA, which is a great achievement. His personal interest in the Trust provides an ideal profiling opportunity and the Trust thanks Keith for his ongoing support.

### History Trust Public Programs

#### History Trust Exhibition Gallery

The exhibition *Gallipoli: The South Australian Story* continued to receive editorial coverage on radio and press throughout the year resulting in 2 745 visiting the gallery. Inability to open the gallery on weekends severely restricts visitor numbers. The Trust thanks the Returned & Services League (RSL) and the *Saluting Their Service* program of the Department for Veterans' Affairs (DVA) for their generous support of this exhibition. The touring component of the exhibition travelled to regional areas of the State and generated significant local media coverage.

#### SA History Week

The Marketing Unit invested a great deal of time executing a very successful advertising and promotional campaign for *SA History Week*, which greatly increased the Trust's corporate profile and the profile of South Australia's history.

Channel 9 and Keith Conlon's support with a creative television commercial was extremely successful in attracting public attention. 891 ABC Adelaide also supported the event with on air mentions, an outside broadcast and history quiz. Messenger Community Newspapers again produced a special *SA History Week* photographic wrap-around in all 11 editions of the paper, reaching every home in metropolitan Adelaide. In addition, each paper provided significant editorial coverage. Our thanks go to 891 ABC Adelaide and Messenger Community Newspapers for their ongoing support of *SA History Week*. For the first time this year, colourful programs, posters and venue signs were developed and generated great interest in their own right. The program and television commercial also generated great interest in the Trust's Glass Negative Collection resulting in many enquiries from the general public. Special thanks go to the Department for Environment and Heritage for their involvement in the new *SA Open Heritage* component of *SA History Week*, and The University of Adelaide and Adelaide City Council for their significant support, which enabled the event to be promoted at a new level. The State History Conference was also a primary feature of the event and also received sponsorship from a range of supporters. This event also commemorated the Trust's 25<sup>th</sup> birthday.

## South Australian Maritime Museum

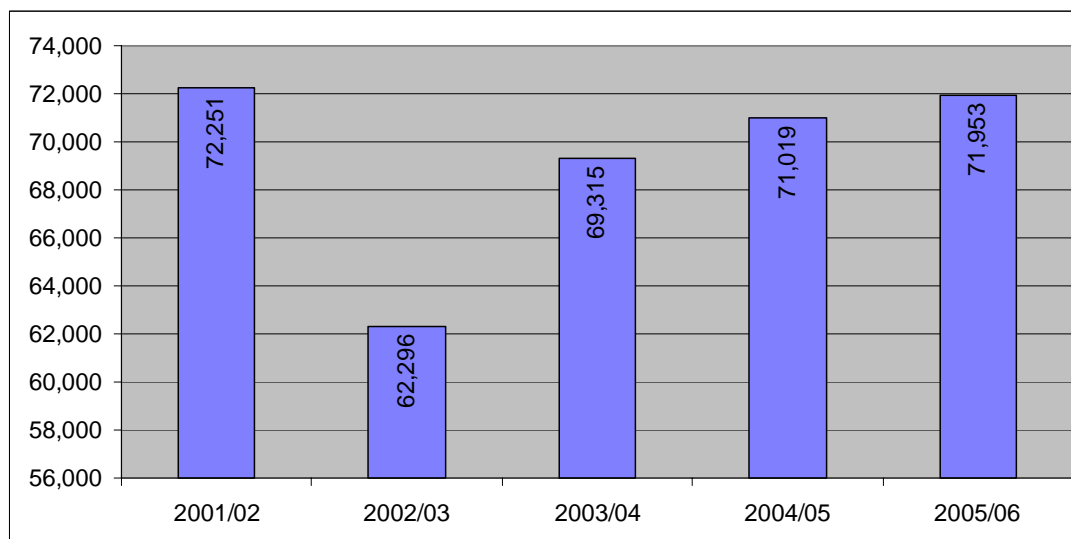
The financial year closed with visitor figures reaching 71 953. This slightly exceeded the previous year by 1.32 per cent, and was way above the projected figure of 65 000, which was a pleasing result. School visits comprised 27 per cent of the Museum's total visitor numbers, with 19 807 visits. This represents an increase of 1 967 over the previous year.

The highlight for the year in terms of visitor numbers and public profile was the *South Australia on the Map 1606–2006* exhibition, held during April, May and June. The timely visit of the late sixteenth century replica vessel *Duyfken* and the Museum's *Festival of Maritime Trades* provided an ideal marketing opportunity which was fully leveraged, resulting in significant media coverage across all media formats. Flinders Ports kindly sponsored this exhibition in addition to *Wrecked! Tragedy and the Southern Seas*. They also funded two community access days, enabling the Museum to offer free admission in February and June. Messenger Newspapers also generously sponsored the free days by providing significant editorial coverage, resulting in a record number of visits to the Museum in any single day.

Channel 9 supported the exhibition program by providing bonus airtime for television commercials for the *Wrecked! Tragedy and the Southern Seas* and the *Just Add Water* exhibitions. Radio stations *MIX 102.3* and *Cruise* were also successfully used to advertise the *South Australia on the Map 1606–2006* exhibition.

Health Promotions through the Arts and Museum Accreditation and Grants Program funding was used to develop the *Ports of Call* exhibition, held in October and November. SA Water was the principal sponsor of the *Just Add Water* exhibition which ran from December to March, and we would like to express our appreciation of their continuing support for the Museum. We would also like to acknowledge the support of TRUenergy for its sponsorship of the Museum's historic vessel, *Archie Badenoch*.

## South Australian Maritime Museum Visitor Figures



## National Motor Museum

The financial year closed with total visitor figures reaching 65 351. This was slightly below the previous year by 2 per cent, but was above the projected figure of 65 000. School visits comprised 5 per cent of the Museum's visitor total with 3 345 visits.

The two major events held at the Museum, the *Bay to Birdwood Classic* and *Rock and Roll Rendezvous*, continued to be important in maintaining visitor numbers, with 12 480 attending both events (19.10 per cent of total visits). The Museum thanks Lane Print who kindly printed posters, flyers and entry forms for the *Rock and Roll Rendezvous* event and the other range of sponsors who provided prizes.

Through their naming rights sponsorship of the Shannons Gallery, Shannons Insurance kindly funded the *Weird Wheels* exhibition and the Trust would like to thank Shannons for their long-standing support of the Museum. This enabled the exhibition to be advertised on Channel 9, who also supported the Museum with additional air time at no cost. Radio stations MIX 102.3 and Cruise were also successfully used to advertise the exhibition. The *Weird Wheels* exhibition also generated significant media coverage across the year.

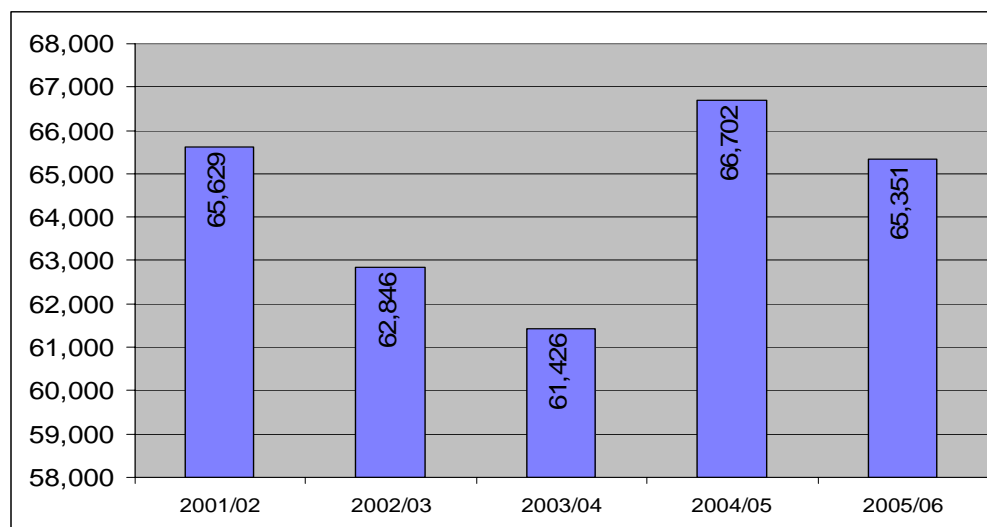
The Museum's ongoing support from Holden Ltd not only assisted in the wider marketing of the museum, but also funded the production of *Inspiring Passion: Design by Holden*, which ran until August 2005. The relationship with Holden Ltd is very important to the Museum and the Trust would like to acknowledge the enormous contribution the company has made to the Museum's programs over the years. This support enabled a new television advertisement to be produced, which was also aired on Channel 9. During the year, special focus was given to promoting school holiday activities to attract families with children, as well as working closely with car clubs in the generation of publicity about their displays and events held at the museum. This publicity proved surprisingly successful.

The Motor Accident Commission confirmed their support in funding the development of a new interactive on safe driving, which was introduced in early July 2006. The Museum thanks the Motor Accident Commission for their ongoing support.

Significant marketing time was spent during the latter half of the financial year in attempting to secure sponsorship for the *Rock and Roll Rendezvous* event and also the new *Birdwood Country Bash* event scheduled for November 2006.

Health Promotions through the Arts funding was directed towards the interpretation of the Milburn electric car and provided a focus on women's history.

## National Motor Museum Visitor Figures



## Migration Museum

A total of 154 705 visitors experienced the Migration Museum this year. This exceeded the previous year by 1.85 per cent. School visits comprised 10.9% of the Museum's total visitor numbers, with 16 879 visits.

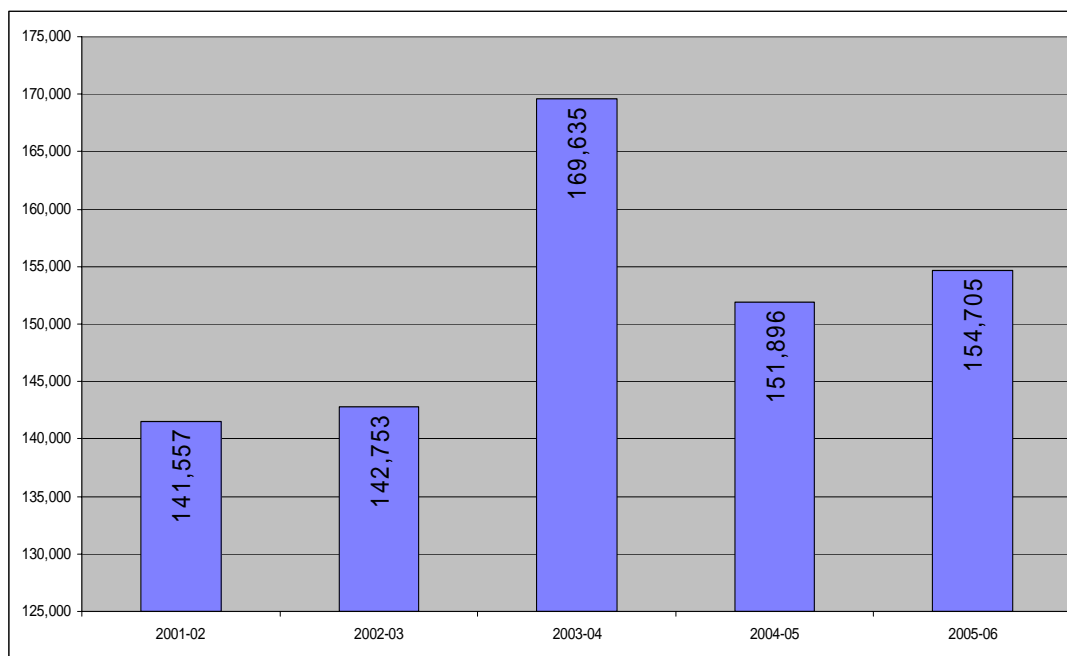
With an extremely limited marketing budget, marketing efforts were directed towards generating free editorial from television, press and radio for the changing exhibitions program and other activities at the Museum. However, the *Three Sides of the Coin: Gambling in South Australia* exhibition was advertised on Radio stations *MIX 102.3* and *Cruise* during the April school holidays and managed to attract a new audience to the Museum. The Museum thanks the Department of Health for supporting this exhibition.

We would like to acknowledge particularly the support of Channel 9 for airing the Settlement Square television commercial, which not only continued to increase the Museum's public profile, but also raised funds for the Foundation.

Health Promotion through the Arts funding was directed towards the Museum's Community Access Gallery. In excess of 128 000 visitors experienced the following displays in the Gallery:

- *Our Place: Our Part*
- *Campbelltown – its History and People*
- *Dear Dr Janzow: Jewish Refugees and the Lutheran Church in Australia*
- *Spin and Weave a Thread*
- *Conquering a Continent*

## Migration Museum Visitor Figures



## Sponsors

The History Trust of South Australia is very grateful to our wide array of sponsors. They are the foundation for many of our programs and we could not function effectively without them.

- 891 ABC Adelaide
- Adelaide City Council
- Albox Australia
- Cruise
- Department for Environment and Heritage
- Department of Veterans' Affairs
- Department of Health
- Disk-Edits
- Flinders Ports
- Friends of the Paul McGuire Maritime Library
- Health Promotions through the Arts
- History Council of South Australia
- Holden Ltd
- Lane Print Group
- Messenger Community Newspapers
- Mix 102.3 FM
- Motor Accident Commission
- NWS Channel 9
- Royal Automobile Association of SA Inc (RAA)
- Returned & Services League of Australia (SA Branch)
- SA Water
- Shannons Insurance
- State Electoral Office
- State Records
- TRUenergy
- The University of Adelaide
- *Visions of Australia*

KYM CHEEK  
Marketing Manager

**History Trust of South Australia** — Torrens Parade Ground, Victoria Drive, Adelaide 5000  
GPO Box 1836, Adelaide 5001  
Telephone: + 61 8 8203 9888 Fax: + 61 8 8203 9883  
Website: [www.history.sa.gov.au](http://www.history.sa.gov.au)  
Email: [staff@history.sa.gov.au](mailto:staff@history.sa.gov.au)

## BUSINESS SERVICES

The Business Services Unit provides financial and administrative services to the organisation and operates centrally from the Directorate at Torrens Parade Ground. The Unit continued to focus on Occupational Health, Safety and Welfare requirements, working closely with other History Trust divisions and Arts SA.

### Queen's Theatre

Twenty seven different groups used the Queen's Theatre for an event during the last reporting period. These ranged from private functions such as wedding and engagement parties, to corporate launches and cultural events. The Fringe Festival occupied the theatre for five weeks during February and March 2006. Christian Brothers College once again hired the theatre for a week during May for their drama students to produce and present a play. Three photo shoots took place in the theatre, with companies attracted by the rustic effect of the theatre as a back drop for their photography. One of these productions was printed in April 2006, in the *Adelaide Magazine*, which is an insert in the *Advertiser* newspaper.

Many event management companies, who love the space, use it on a repeat basis when they are presented with the right client and function. These repeat users are a valuable client base and are also the most reliable users of the theatre. They make up about 25 per cent of the total usage of the theatre. There was an increase in school and university groups using the theatre over the last year. The theatre provided a valuable, flexible and unique exhibition space for these students.

Woodhead International continued to provide support and consultation for ongoing heritage management issues. During 2005 non-intrusive density testing was carried out by GBG and Wallbridge and Gilbert to assess the condition of the wooden pillars in the theatre. Some repairs will need to be made during the next 12 months. Additional maintenance of recaulking the walls, due to be carried out every 5 years, will be done within the next 12 months. In order to evaluate the wall condition, inspections were carried out by Woodhead International and Westox Restoration Systems in anticipation of using the Cocoon Desalination System.

The Queen's Theatre continued to provide a flexible and cost effective option for small theatre, cultural, education and non profit organisations.

---

## Management of Human Resources

---

### Staffing – Directorate

The role of Business Manager was shared by Donna Tims and Rebecca Rudzinski from July 2005. Donna commenced maternity leave in February 2006 and Rebecca was appointed full-time to cover her absence. Suzanne Ball commenced at the Migration Museum in December to cover for Jessamy Benger who was on maternity leave. Linda Curran and Georgia Heath were appointed part-time to replace Suzanne in her absence. Kym Cheek was appointed to the position of Marketing Manager from December 2005.

*Employee numbers, gender and status*

<b>Persons</b>	66
----------------	----

<b>FTEs</b>	46.66
-------------	-------

<b>Gender</b>	<b>% Persons</b>	<b>% FTEs</b>
Male	25.76	30.41
Female	74.24	69.59

Number of persons separated from the agency during the 05-06 financial year	26
Number of persons recruited to the agency during the 05-06 financial year	24
Number of persons on leave without pay as at 30 June 2006	1

*Number of employees by salary bracket*

<b>NUMBER OF EMPLOYEES BY SALARY BRACKET</b>			
<b>Salary Bracket</b>	<b>Male</b>	<b>Female</b>	<b>Total</b>
\$0 — \$40 399	10	27	37
\$44 000 — \$54 999	3	13	16
\$55 000 — \$67 999	1	6	7
\$68 000 — \$88 999	3	2	5
\$89 000 +	0	1	1
<b>TOTAL</b>	<b>17</b>	<b>49</b>	<b>66</b>

*Status of employees*

<b>STATUS OF EMPLOYEES IN CURRENT POSITION</b>					
	<b>FTEs</b>				
	Ongoing	Short-Term Contract	Long-Term Contract	Other (Casual)	Total
Male	9.58	1.4	3	0.21	14.2
Female	12.72	6.96	3.97	1.82	32.5
<b>TOTAL</b>	<b>29.3</b>	<b>8.36</b>	<b>6.97</b>	<b>2.03</b>	<b>46.7</b>
	<b>Persons</b>				
	Ongoing	Short-Term Contract	Long-Term Contract	Other (Casual)	Total
Male	11	2	3	1	17
Female	26	10	5	8	49
<b>TOTAL</b>	<b>37</b>	<b>12</b>	<b>8</b>	<b>9</b>	<b>66</b>

*Executives*

<b>NUMBER OF EXECUTIVES BY GENDER, CLASSIFICATION AND STATUS IN CURRENT POSITION</b>									
<b>Classification</b>	<b>Ongoing</b>		<b>Contract Tenured</b>		<b>Contract Untenured</b>		<b>Total</b>		
	Male	Female	Male	Female	Male	Female	Male	Female	Total
EXEC0A	0	0	0	0	0	1	0	1	1
<b>TOTAL</b>	<b>0</b>	<b>0</b>	<b>0</b>	<b>0</b>	<b>0</b>	<b>1</b>	<b>0</b>	<b>1</b>	<b>1</b>



### Leave management

Leave Type	2002–03	2003–04	2004–05	2005–06
Sick leave hours taken	342.90	236.46	274.24	226.31
Family carer's leave hours taken	42.90	11.13	14.61	27.66
Special leave with pay hours	13.43	5.53	29.33	39.19

### Workforce Diversity

The History Trust recognises the value of workforce diversity and the benefits inherent to a workforce that is representative of the community it serves.

### Age profile

NUMBER OF EMPLOYEES BY AGE BRACKET BY GENDER					
Age Bracket	Male	Female	Total	% of Total	South Australian Workforce*
15–19	0	0	0	0	7.9
20–24	1	2	3	4.55	10.7
25–29	0	9	9	13.64	9.8
30–34	1	4	5	7.58	10.5
35–39	5	2	7	10.61	11.4
40–44	1	11	12	18.18	12.4
45–49	2	4	6	9.09	12.4
50–54	1	7	8	12.12	10.9
55–59	2	5	7	10.61	8.3
60–64	3	2	5	7.58	4.4
65+	1	3	4	6.06	1.3
<b>TOTAL</b>	<b>17</b>	<b>49</b>	<b>66</b>	<b>100</b>	<b>100.0</b>

\* Benchmark as at February 2005 from ABS Supertable LM8

### Indigenous employees

NUMBER OF ABORIGINAL AND/OR TORRES STRAIT ISLANDER EMPLOYEES				
Male	Female	Total	% of Agency	Target*
0	0	0	0%	2.0%

\* Target from South Australia's Strategic Plan

### Cultural and linguistic diversity

CULTURAL AND LINGUISTIC DIVERSITY					
	Male	Female	Total	% of Agency	SA Community*
Number of employees born overseas	4	8	12	18.18	20.3%
Number of employees who speak language(s) other than English at home	0	0	0	0	15.5%
<b>TOTAL</b>					

\* Benchmarks from ABS Publication Basic Community Profile (SA) Cat No. 2001.0

### Disability

NUMBER OF EMPLOYEES WITH ONGOING DISABILITIES REQUIRING WORKPLACE ADAPTATION				
	Male	Female	Total	% of Agency
<b>TOTAL</b>	<b>0</b>	<b>0</b>	<b>0</b>	<b>0%</b>

### Voluntary Flexible Working Arrangements

Voluntary Flexible Working Arrangements available in the public sector are outlined in PSM Act Determination 5. These arrangements are designed to assist employees to better manage their work and other responsibilities and interests.

NUMBER OF EMPLOYEES USING VOLUNTARY FLEXIBLE WORKING ARRANGEMENTS BY GENDER			
	Male	Female	Total
Purchased Leave	0	0	0
Flexitime	9	27	36
Compressed Weeks	0	0	0
Part-time Job Share	2	5	7
Working from Home	0	0	0

#### Arrangement

#### Enables an employee to ...

#### Purchased Leave

exchange an agreed reduction in salary in return for extra periods of leave over a specified period.

#### Flexitime

negotiate how / when hours will be worked within agreed limits.

#### Compressed Weeks

work a nine-day fortnight by working the same number of hours over nine instead of 10 working days.

#### Part time and Job Share

work less than a full time employee. The hours are usually fixed and constant. Job sharing is a voluntary arrangement where one full time job is shared between two or more people.

#### Working from Home

work from a home-based work location instead of their usual office based location

### Performance Development

#### DOCUMENTED REVIEW OF INDIVIDUAL PERFORMANCE DEVELOPMENT PLAN

Employees with ...	% Total Workforce
A plan reviewed within the past 12 months	100.0
A plan older than 12 months	0
No plan	0

### Equal Employment Opportunity Programs

The History Trust continued to monitor adherence to Government's Equal Employment Opportunity requirements through monthly staff and management meetings. Adherence to the History Trust's policies, Equal Opportunity Policy and Prevention of Workplace Harassment were monitored and training provided where required, particularly for the museums' volunteers. In addition, all museums considered aspects of cultural diversity in its broadest sense and access when devising annual exhibition programs. (Refer Appendix 14 for detailed listing of programs).

## **Occupational Health, Safety and Rehabilitation (including Injury Management)**

During 2005–2006 the History Trust continued to make significant and sustained achievements in the management of OHS&W.

The implementation of a new chemical database, ChemWatch was successful. The Trust now has a manifest and store of all its chemicals. The system is maintained by delegated employees within each division who ensure that the information on the system is updated and risk assessments are carried out on hazardous substances.

Key achievements/actions for 2005–2006 included:

- OHS&W committees operational in all divisions
- ongoing training for employees and managers in OHS&W responsibilities
- introduction of the ChemWatch chemical management system
- regular audits and inspections conducted in all work areas.

### **OCCUPATIONAL HEALTH, SAFETY AND INJURY MANAGEMENT INFORMATION**

		2005-06	2004-05	2003-04
<b>1</b>	<b>OHS legislative requirements</b>			
	Number of notifiable occurrences pursuant to OHS&W Regulations Division 6.6	1	0	2
	Number of notifiable injuries pursuant to OHS&W Regulations Division 6.6	0	0	0
	Number of notices served pursuant to OHS&W Act s35, s39 and s40 (default, improvement and prohibition notices)	0	0	0
<b>2</b>	<b>Injury Management legislative requirements</b>			
	Total number of employees who participated in the rehabilitation program	0	1	1
	Total number of employees rehabilitated and reassigned to alternative duties	0	0	1
	Total number of employees rehabilitated back to their original work	0	0	0
	Number of open claims as at 30 June	0	3	4
	Percentage of workers compensation expenditure over gross annual remuneration	0.03		
<b>3</b>	<b>Number of claims</b>			
	Number of new workers compensation claims in the financial year	1	3	3
	Number of fatalities, lost time injuries, medical treatment only	(F) (LTI) (MTO)	0 0 1	0 0 3
	Total number of whole working days lost	2	124	208
<b>4</b>	<b>Cost of workers compensation</b>			
	Cost of new claims for financial year	366	3,485	200
	Cost of all claims excluding lump sum payments	708	22,483	37,677
	Amount paid for lump sum payments (s42, s43, s44)	s42 s43 s44	0 50,000 24,486	50,000 22,037
	Total amount recovered from external sources (WRC Act s54) including from a negligent third party	0	0	0
	Budget allocation for workers compensation	12,000		3,000
<b>5</b>	<b>Trends</b>			
	Injury frequency rate for new lost-time injury/disease for each million hours worked	13	13.9	
	Most frequent cause (mechanism) of injury	Hits	Muscular Stress, Hits, Noise	Falls, Slips & Trips
	Most expensive cause (mechanism) of injury	Hits	Muscular Stress	Falls, Slips & Trips
<b>6</b>	<b>Meeting the organisation's strategic targets</b>			
	<i>(Targets and results from the organisation's action plan are entered here)</i>			

## Financial Reporting

### *Financial performance*

A grant of \$3 759 000 was made to the History Trust to fund some of its operations for 2005–2006. The sum included \$185 000 in specific-purpose funding for the Museums Accreditation and Grants Program and South Australian History Fund, both of which are administered by the Trust. It also included \$847 000 for accommodation costs, including building maintenance and operating leases, \$102 000 for insurance and \$112 000 for Arts SA corporate service charges.

The financial outcome for the year was very pleasing. There was a net increase in cash of \$384 000 which included grants and sponsorships not yet expended during 2005–2006.

### *Annual financial statements*

Refer to Appendix 15 for the History Trust's Annual Financial Statements.

### *Account payment performance*

In accordance with Treasurer's Instruction 11.

Particulars	Number of accounts paid	% of Total accounts paid (by number)	Value in \$A of accounts paid	% \$ of Total accounts paid (by value)
Paid by the due date*	3,790	88%	\$2 182 315	85%
Paid late but paid within 30 days of due date	328	8%	\$191 222	7%
Paid more than 30 days from due date	165	4%	\$206 018	8%
<b>TOTAL ACCOUNTS PAID</b>	<b>4,283</b>	<b>100%</b>	<b>\$2 579 555</b>	<b>100%</b>

\*The due date is defined as per 11.2 of *Treasurer's Instruction 11 Payment of Accounts*. Unless there is a discount or written agreement between the public authority and the creditor, payments should be within 30 days of the date of the invoice or claim.

### *Fraud*

The History Trust has disclosed to the Auditor-General the results of the Trust's assessment of the risk that the financial report may be materially misstated as a result of fraud. The result of the Trust's assessment indicates that the financial statements would not be materially misstated. The History Trust has disclosed to the Auditor-General all known actual or possible non-compliance with laws and regulations, the effects of which have been considered when preparing the financial report.

### ***Consultants***

No consultants were engaged by the History Trust of South Australia during the year but the Trust contributed to the costs of the production of an adequacy assessment report relating to records management across arts agencies.

Particulars	Value of consultancy contracts paid to date	Number of consultancies paid to date
Below \$10 000	\$3 000	1
\$10 000 to \$50 000		
Above \$50 000		
Total	\$3 000	1

### ***Urban Design Charter***

Not applicable.

### ***Regional Impact Assessment Statements***

No Regional Impact Assessment Statements were prepared or required.

### ***Freedom of Information***

The Trust received no Freedom of Information requests directly, but was asked to advise on one application managed by the Department for Environment and Heritage.

### ***Energy Efficiency Action Plan Reports***

	Energy Use (GJ) <sup>1</sup>	Expenditure (\$) <sup>2</sup>	GHG Emissions <sup>3</sup>
Base Year 2000–2001 <sup>4</sup> : Agency One Agency Two, etc. <b>Portfolio Total</b>	3428.00	\$117 000.00	1129
Year Being Reported: 2005–06 Agency One Agency Two, etc. <b>Portfolio Total</b>	2581.67	\$108 071.81	722.15
<b>Portfolio Target<sup>5</sup></b> (for Year Being Reported) 9%	3119	\$106.00	1027
<b>Interim Portfolio Target<sup>6</sup></b> (for 2010) 15%	2914	\$100.00	960
<b>Final Portfolio Target<sup>7</sup></b> (for 2014) 25%	2571	\$88	847

1 Energy use data will be expressed in GJ and will be the sum of all fuel types used in each agency (ie electricity, natural gas, bottled gas, etc) for that period. This data will have been collected at a site level and aggregated up to agency level by the portfolio Reference Group member.

2 Energy use expenditure will be expressed as net of the GST amount.

3 Many portfolios are pursuing 'triple bottom line' reporting approach. It is therefore an optional extra that portfolios may wish to include Greenhouse Gas Emissions (in CO<sub>2</sub>) as a means of quantifying a significant aspect of environmental performance. Greenhouse gas coefficients differ for fuel types.

4 It is acknowledged that portfolio structures change over time. Therefore the portfolio baseline will represent the structure of the portfolio in the given reporting period.

5 The portfolio target for the current year is based on an agreed methodology and can be obtained through the portfolio Reference Group member.

6 The portfolio target in 2010 should equal a 15% reduction from the base year 2000–01.

7 The portfolio target in 2014 should equal a 25% reduction from the base year 2000–01.

### ***Asbestos management in government buildings***

Government has adopted guidelines for asbestos management in government buildings. The History Trust of South Australia is to report on our asbestos risk reduction program.

#### **Priority and Removal Activities**

Site Asbestos Presence Status	Priority for Risk Assessment	No of sites in Priority for Assessment category	Risk Reduction Program: Activities conducted during 2005-06	Quantification of Activities (By Item / By Area / By \$)
Insufficient data	Urgent		Not applicable	
Unstable, Accessible; Or Unstable, Damaged Or Decayed	Urgent	1	SA Maritime Museum - <i>Fearless</i>	Sealed in the hull. The site is locked. There is no public access. It is surrounded by a fence. There is signage displayed.
Unstable, Inaccessible; Or Unstable, Partly Accessible	High	1	National Motor Museum - Roof shingle	Contained. Building not in use and staff being relocated.
Stable, Accessible; or Stable, Accessible, Initial Signs of Decay	Medium	2	SA Maritime Museum - Bank Building - <i>Yelta</i>	Areas sealed. Quotations for removal are being sought.
Stable, Inaccessible Or Stable, Partly Accessible	Low	1	SA Maritime Museum - <i>Nelcebee</i>	Areas sealed. Quotations for removal are being sought.
Asbestos Free	Not applicable	5	SA Maritime Museum - Jane St Store - Lipton Rooms - Weyman Building - Exhibition building - Lighthouse	

#### *Site Asbestos Presence Status:*

- Indicates what types of asbestos containing materials (ACMs) are present at each site, as recorded in the Asbestos Register.

#### *Priority for Risk Assessment:*

- Indicates the associated priority for further whole of site risk assessment, based on type of ACM present at each site.

#### *No of Sites in Priority for Assessment Category:*

- Indicates how many sites have at least one item of ACM of that type present
- Provides an initial summary of what ACM items are present over a portfolio

#### *Risk Reduction Program: Activities Conducted During 2005-2006*

- A brief, qualitative description of work undertaken over the year, including analyses, removals and targeted ACMs (roofing / eaves, damaged cladding on walls / partitions / ceilings, equipment fittings – insulation or gaskets etc).
- Site names can be used but are not mandatory.

#### *Quantification of Activities: ACMs Removed (By Item / By Area / By \$)*

- Quantitative totals of removals of ACMs by numbers of items (as recorded in the Asbestos Register), and / or by square metres (or linear metres, cubic metres etc), and / or by expenditure for removal.

#### **Definitions**

ACM: Asbestos Containing Material.

Unstable: Denotes Non-Friable ACMs of Poor Condition, or Friable ACMs of Medium or Poor Condition, as recorded in the Asbestos Register

Stable: Denotes Non-Friable ACMs of Good or Medium Condition, or Friable ACMs of Good Condition, as recorded in the Asbestos Register

## Risk Reduction

Site Category Scale	Site Performance Score Site Risk Level	1 Severe	2 Major	3 Moderate	4 Minor (threshold category)	5 No risk (target category)	Not assessed
	% Of Sites in Category at Year's Commencement		10	27	18	36	9
	Adjusted % After Annual Reduction Activity		10	27	18	45	

*Site Category Scale: Site Performance Score*

- Based on risk assessment of ACMs present at the site, using a scale of 1 to 5, including a category for sites that are being assessed but are not yet categorised.

*Site Category Scale: Site Risk Level*

- The assessed asbestos risk level for the site as a whole, based on the recommended actions of the ACMs at that site.

*% of Sites in Category at Year's Commencement*

- The percentage of sites in the portfolio assessed at each risk level.

*Adjusted % After Annual Reduction Activity*

- The percentage of sites in the portfolio assessed at each risk level. (Should be associated data updates in the Asbestos Registers).

---

## Other matters required by the Premier

---

### *Overseas travel*

Number of Employees	Destination/s	Reasons for Travel	Total Cost to Agency
1	New Zealand	Present a paper at the International Congress of Maritime Museums	Nil
1	United States of America	Present a paper to the 2005 World Forum for Motor Museums.	\$2,100

### *Contractual arrangements*

There have been no major changes to the Contractual arrangements. However, there has been an extension of the contract until 30 June 2006 between DAIS and the FM Service Providers.

### *Disability Action Plans*

The History Trust broadly follows the Disability Action Plan developed by Arts SA to ensure the delivery of the five outcomes listed below, within the constraints of our heritage buildings.

1. Ensure the accessibility of services to people with disabilities.
2. Ensure information about services and programs is inclusive of people with disabilities.
3. Deliver advice and services to people with disabilities with awareness and understanding of issues affecting people with disabilities.
4. Provide opportunities for consultation with people with disabilities in decision-making processes regarding service delivery and in the implementation of complaints and grievance mechanisms.
5. The Chief Executive will ensure that the History Trust has met the requirements of the *Disability Discrimination Act 1992* and the *Equal Opportunity Act 1984*.

---

## **Future Gender Reporting**

---

The History Trust has a long-term commitment to considering the gendered nature of history in planning exhibitions, publications and other public programs. Individual research projects also include a gendered perspective.

---

## **Aboriginal Reconciliation Statement**

---

The History Trust continued to implement its 2005–07 Business Plan, which included a range of initiatives relevant to Reconciliation:

- The Migration Museum's refurbished galleries have a strong Indigenous history theme.
- The Migration Museum continued to offer *Impact of Settlement*, their cultural awareness–historical program, to a range of Government agencies and schools.
- The Migration Museum continued to work with Indigenous groups in planning the re-development of the permanent galleries.
- The Migration Museum developed a travelling interpretive exhibition for the Department of Premier and Cabinet on the 1923 Ngarrindjeri Petition in collaboration with members of the community in 2004-05, continued to tour in 2005-06.
- The Trust continued to work with all registered and accredited museums in the State to include recognition of Aboriginal land as a component of registration.
- The Trust continued to encourage community museums to work collaboratively with local Indigenous communities. The Melrose branch of the National Trust, through the Museums Accreditation and Grants Program, completed an innovative program with the Nukunu People's Council.
- Indigenous history was a strong theme in the 2006 State History Conference and in the specific themed conference managed by the Trust.

DONNA TIMS AND REBECCA RUDZINSKI  
Business Managers

**History Trust of South Australia** — Torrens Parade Ground, Victoria Drive, Adelaide 5000  
 GPO Box 1836, Adelaide 5001  
 Telephone: + 61 8 8203 9888 Fax: +61 8 8203 9883  
 Website: [www.history.sa.gov.au](http://www.history.sa.gov.au)  
 Email: [staff@history.sa.gov.au](mailto:staff@history.sa.gov.au)



TWENTY SIXTH ANNUAL REPORT

OF THE

HISTORY TRUST  
of  
SOUTH AUSTRALIA

FOR THE

YEAR ENDED 30 JUNE 2006

**APPENDICES**

## 1. Board of Trustees

---

Phillip Broderick, LL.B (*Chair*)

Fiona Catherine Adler (*Resigned December 2005*)

Margaret Allen, BA (Hons), DipEd, MA (History), MA (Social History), PhD

Susan Filby, LL.B, FAICD (*Term to December 2004*)

John Fotheringham, BTech (Civil), MIE Aust, FAICD (Term to 17 July 2005)

Alison Mackinnon, PhD, Med, DipEd (Advanced) DipEd, BA

Bryan Moulds, BA (Planning), CTech

Minerva Nasser-Eddine, BA (Hons), MA, PhD, GDipBusEnt

Philip Satchell (Term from June 2006)

At 30 June 2006 the History Trust Board had one vacancy.

## 2. Management Personnel

---

Margaret Anderson, BA (Hons), MA, DipEd	Chief Executive
Kym Cheek, BA Comm	Manager, Marketing
Kym Hulme	Manager, National Motor Museum
Kevin Jones, BA (Hons), Grad Dip Mus Stud	Director, South Australian Maritime Museum
Vivienne Szekeres, BA (Hons), BEd	Director, Migration Museum
Donna Tims	Manager, Business Unit
Rebecca Rudzinski	Manager, Business Unit
Kate Walsh, BA (Hons), DipEd	Manager, Community History Unit

### 3. Staff as at 30 June 2006

---

#### Directorate

Margaret Anderson, Chief Executive  
 Suzanne Ball, Administrative Officer  
 Lisa Barca, Records Administrator  
 Kym Cheek, Marketing Manager  
 Linda Curran, Administrative Officer  
 Georgia Heath, Administrative Officer

Anna Ragosa, Chief Executive's Secretary  
 Rebecca Rudzinski, Business Manager  
 Cherie Saunders, Assistant Business Manager  
 Joylyne Teh, Human Resources Officer  
 Lee Tillett, Marketing Officer  
 Donna Tims, Business Manager

#### Community History Unit

Kate Walsh, Manager, Community History Unit  
 Theresa Cockburn, Administrative Officer  
 John Davis, Project Officer  
 Lynn Drew, Information Resources Manager

Amanda James, Community History Officer  
 Jan Mudge, Public Programs Officer  
 Mandy Paul, Curator

#### Migration Museum

Viv Szekeres, Director  
 Suzanne Ball, Operations Manager  
 Marg Degotardi, Designer  
 Melissa Drew, Assistant Designer  
 Christine Finnimore, Senior Curator  
 Elizabeth Galatsanos, Guide  
 \*Rosa Garcia, Education Officer  
 Pamela Graham, Casual Guide  
 Georgia Heath, Casual Guide

Kath Inglis, Guide  
 Anna Linarello, Casual Guide  
 Catherine Manning, Curator  
 Lata Mayer, Guide  
 Sue Milln, Guide  
 Suzanne Redman, Administrative Officer  
 Deidre Robb, Guide  
 Pat Stretton, Guide

#### National Motor Museum

Kym Hulme, Divisional Manager  
 Janet Alexander, Museum Officer  
 Andrew Applebee, Museum Officer  
 Bruno Davids, Administrative Officer  
 Mark Eckermann, Designer  
 Kathy Edelbauer, Facilities Officer  
 Steve Farrer, Museum Officer

Immanuel Hansen, Curatorial Officer-Mechanic  
 Ian Hay, Coachbuilder  
 Matthew Lombard, Curator  
 Keith Norrish, Groundsperson  
 Allison Russell, Senior Curator  
 Pauline Renner, Events Coordinator  
 Sue Wheeler, Business Manager

#### South Australian Maritime Museum

Kevin Jones, Director  
 Rebecca Baker, Administrative Officer  
 Theresa Cockburn, Administrative Officer  
 Rolf Christiansen, Museum Officer  
 Kristy Dermody, Curator  
 Venetia Gillot, Museum Officer  
 Robert Holme, Fleet and Volunteer Coordinator  
 Eddy Knight, Museum Officer

Judy Laidler, Museum Officer  
 Rob Lincoln, Museum Officer  
 Trish Mathieson, Museum Officer  
 \*Liz Murphy, Education Officer  
 Bill Seager, Senior Curator  
 Joan Simpson, Operations Manager  
 Asa Wassberg, Administrative Officer

\* Seconded from the Open Access College of the Department of Education, Training and Employment (DETE)

#### **4. Advisory Committees**

---

##### **National Motor Museum Development Committee**

Mr Graham Ericson	Strategic Business Alliance
Mr Bob Gell	Operations Commercial Manager, Royal Automobile Association
Mr Malcolm MacDowell	Volunteer representative
Mr Chris Ward	Bank SA

#### **5. Honorary Consultants/Valuers**

---

<b>Weapons Curator</b>	Mr Lee Blair-Jenke
<b>Rail Heritage Collections</b>	Mr Frank McDonnell

#### **6. Migration Museum Foundation Committee Members**

---

Chair	Mr Alec Khoo
Treasurer	Mr Raymond G Tuckfield
Secretary	Suzanne Ball
Members	Mr Randolph Alwis
	Prof Judith Brine
	Mr Alex Gardini
	Mr Daniel Mitroussidis
	Ms Minerva Nasser-Eddine
	The Hon Julian Stefani, OAM MLC
	Mr Bruce Soar
	Ms Andrea Stylianou
	Ms Viv Szekeres

## 7. Volunteer Services

---

The History Trust is extremely grateful for the services of a large number of volunteers. We could not manage our museums, special events and collections without them and thank them most sincerely for their continuing work on our behalf. The volunteers contributed an estimated 13 992 hours to the History Trust in 2005–06.

### Directorate/Community History Unit

Mike Brown	John Davis	Jan Fisher	Adam Rohrlach
------------	------------	------------	---------------

### Migration Museum

Paul Beresford	Glenys Edwards	Barbara Jeffries	Pauline Rickard
Emily Bower	Pamela Griffiths	Beth Jeffries	Barbara Rowney
Val Darby	Tony Harris	David Rickard	Meryl Thompson

### National Motor Museum

Brian Barber	Chris Engelson	Derek Hidden	Des Pudney
Geoff Beatty	Roy Feather	Ross Hoare	Dave Richardson
Valerie Beatty	Martin Finn	Mark Holt	Raelene Richter
Chris Bennett	Peter Flaherty	Andrew Hunt	Richard Sage
Danny Buxallen	Barbara Flaum	Robert Hutchinson	John Schwartz
Frank Carey	Leith Franklin	Danny Kay	Jenny Simmons
Arthur Clisby	Terry Franklin	Donald Kay	Peter Stopford
Nola Clisby	Bill Gallagher	Bob Keynes	Ivan Sutton
Geoff Coat	Francis Georg	Brett Knuckey	Jim Thompson
Carina Daly	Thomas Georg	David Manson	Graham Tomlinson
Raelene Day	Geoffrey Glynn–Roe	Carolyn Mason	Abbey Van Manen
Jamie Denton	Darryl Grey	Lindsay Mason	John Van Manen
Lynton Denton	Lorraine Harris	Malcolm McDowell	Mal Wade
Janet Egan	Wayne Harris	Aylene Mueller	Wolfgang Warmer
Colin Emmett	John Henderson	Kevin Osborne	

### South Australian Maritime Museum

David Avenell	Henry Doherty	Gordon Lindsley	Jan Perry
Paul Aylmore	Ernie Edwards	Andrew Mangnoson	Chris Richards
Paul Baker	Ray Elvin	Ellis Mathews	Dave Rickard
Ron Barnes	Graham Evans	Rick Mathews	Keith Ridgeway
Yensie Barnes	Michael Finn	Carol Mitchell	Michael Sedlmayer
Fritz Bonner	Keith Ford	Marjorie Morris	Fred Smith
Alan Bowman	Harry Goodall	Rex Munn	Peter Thomas
Rick Brook	Cyril Haire	Don Murphy	Hank Vandewater
Alexander Cameron	John Hall	Peter Nearmy	Peter Walls
Allan Campbell	Graeme Hammer	Hiep Nguyen	Ian Wood
Tony Crosse	John Hornby	Marion Osborne	Marguerite Workman
Nicki Crowther	John Kempton	Mike Parsons	
Colin Day	John Lawrence	Jim Paul	

## 8. Key Performance Indicators 2005–2006

---

	2002–03	2003–04	2004–05	2005–06
<b>Access by the South Australian Community to the State's Cultural Heritage</b>				
Visitor numbers for Trust Museums (total)	290 588	303 906	303 453	305 804
travelling exhibitions (outward) visitor numbers (total)	270 000	10 000	40 000	5 348
School numbers (total)	32 404	32 717	35 829	39 801
Travelling exhibitions – outward	1	2	2	3
Number of community organisations assisted	#762	#1 322	399	455
Number of enquiries	#12 677	#16 530	14 488	14 266
<b>Financial Performance</b>				
Revenue generated				
admissions	\$519 000	\$522 000	\$582 000	\$581 802
functions/facilities hire	\$73 000	\$83 000	\$66 000	\$64 192
book/gift shops	\$183 000	\$189 000	\$191 000	\$190 855
external grants	\$27 000	\$0	\$50 000	\$119 000
donations	\$13 000	\$23 000	\$29 000	\$50 496
sponsorship ⇨ cash	\$254 000	\$359 000	\$292 000	\$434 900
other income	\$355 000	\$372 000	\$740 000	\$104 754
Number of volunteers on books at 30 June	153	149	120	125
and the estimated person hours contributed for the year	15 621	14 717	13 290	13 992

# The Trust's performance indicators were reviewed and reduced in 2002 in line with the Performance Agreement with Arts SA. Methods of counting some indicators (notably organisations assisted and enquiries) were reviewed, which accounts for the apparent variations in these figures.

## 9. Grants Obtained

---

### Directorate

\$40 000      The Le@rning Federation. For digital resources website project.

### Migration Museum

\$47 600      Department of Health Services. To support the exhibition *Three Sides of the Coin: Gambling in South Australia*

### South Australian Maritime Museum

\$108 000      Visions of Australia Development Grant. To support the tour of the exhibition *Wrecked! Tragedy and the Southern Seas*.

## 10. Museums Accreditation and Grants Program

---

The focus in 2005–06 was on concluding the review of all registered and accredited museums.

During 2005–06 two museums achieved first time accreditation and two achieved first time registration.

The following 61 museums are currently registered or accredited in the Program.

### Accredited museums as at 30 June 2006

Australian Electric Transport Museum, St Kilda (Tramway Museum)  
 Ayers House Museum (first accredited in 2005–06)  
 Embroiderers' Guild Museum, Mile End (first accredited in 2005–06)  
 Melrose Courthouse Heritage Centre  
 Millicent National Trust Museum  
 The Sheep's Back Museum, Naracoorte National Trust  
 South Australian Aviation Museum, Port Adelaide  
 Unley Museum

### Registered museums as at 30 June 2006

Adelaide Masonic Centre Museum	Mallee Tourist and Heritage Centre, Pinnaroo
Ardrossan National Trust Museum	Mannum Dock Museum
Army Museum of South Australia, Keswick (registered 2005–06)	Mary MacKillop Penola Centre
Axel Stenross Maritime Museum, Port Lincoln	Moonta Mines Museum
Barmera National Trust Museum, Cobdogla	Mount Gambier Branch National Trust
Barossa Valley Archives and Historical Trust Museum, Tanunda	Mount Laura Homestead Museum, Whyalla
Booleroo Steam and Traction Preservation Society	Norwood History Centre
Brinkworth History Group	Old Highercombe Hotel Folk Museum, Tea Tree Gully
Burra Burra Branch National Trust	Old Wool and Grain Store Museum, Beachport and District Branch National Trust
Charles Sturt Memorial Museum Trust, Grange	Penneshaw Maritime and Folk Museum
Clayton Farm Heritage Museum, Bordertown	Polish Hill River Church Museum, Sevenhill
Crystal Brook Heritage Centre	Port MacDonnell Maritime Museum
Eyre Peninsula Railway Preservation Society, Port Lincoln	Port Pirie National Trust Museum
Farm Shed Museum, Kadina National Trust	Port Victoria Maritime Museum
Friedensberg Historic German School Museum, Springton	Prospect Hill Historical Museum
Gawler National Trust Museum	Radium Hill Heritage Museum
Goolwa National Trust Museum	Scholz Park Museum, Riverton
Kimba and Gawler Ranges Historical Society	South Australian Police Historical Society Inc, Thebarton
Kingston National Trust Museum	Stansbury Museum
Koppio Smithy Museum	Strathalbyn National Trust Museum
Lameroo and District Historical Society	Swan Reach Museum
Latvian Museum, Wayville	The Hahndorf Academy
Lock and Districts Heritage Museum	Uleybury School Museum, One Tree Hill
Loxton Historical Village	Urrbrae House Historic Precinct, Urrbrae
Maitland National Trust Museum	Wallaroo Heritage and Nautical Museum
Mallala and Districts Historical Society (registered 2005–06)	Whyalla Maritime Museum
	Willunga Courthouse Museum

## 10. Museums Accreditation and Grants Program (cont.)

### Allocation of grants

Museums need to be accredited or registered with the History Trust to be eligible for Museums Accreditation and Grants Program funding. The ongoing review of all registered and accredited museums prompted continued high demand on the grant fund.

There was \$152 000 available for allocation this year. The grants listed are exclusive of GST.

The assessment panel appointed for 2005–06 was Margaret Anderson, Chief Executive History Trust, Kate Walsh, Manager, Community History Unit, Amanda James, Community History Officer, and independent assessors Ann Herraman, Mount Lofty and District Historical Society, and Allison Russell, Flinders University Art Museum. Applications from National Trust Branches were also reviewed by Alan Graham, Chief Executive, National Trust of South Australia.

There were 46 applications from 36 museums. Total funding requested was \$248 640.

A wide variety of grants were approved, including major exhibition projects, collection conservation and storage projects. There was a good regional spread of grants across the state.

Organisation	Project	Grant \$
Adelaide Masonic Centre Museum	Develop portable interpretive panels for the centenary of the Grand Lodge of Mark Master Masons in South Australia.	2 541
Adelaide Masonic Centre Museum	Reproduce a facsimile of the original Lodge of Friendship warrant and stabilise and store the original.	2 100
Australian Electric Transport Museum	Engage a consultant to develop a concept plan for the museum site.	4 000
Axel Stenross Maritime Museum	Copy and store historic photographs.	3 000
Ayers House Museum	Digitise documentary collection and complete rehousing of the costume collection.	1, 500
Ayers House Museum	Accreditation grant.	5 000
Booleroo Steam and Traction Preservation Society	Engage a designer to develop a concept plan for displays about the development of farming and rural life in the Booleroo District.	3 800
Bordertown and District Agricultural Museum Inc.	Develop new interpretive signs.	4 558
Charles Sturt Memorial Museum Trust	Produce a promotional brochure.	1 500
Embroiderers' Guild Museum	Accreditation grant.	5 000
Eyre Peninsula Railway Preservation Society	Reproduce photographs and documents for display and preservation.	1 568
Farm Shed Museum and Tourism Centre	Develop a collection storeroom.	4 500
Gawler National Trust Museum	Develop a concept interpretation and design plan for the annexe area of the museum.	6 500
Goolwa National Trust Museum	Upgrade storyboards for key exhibits.	2 800
Koppio Smithy National Trust Museum	Copy and store Jericho family photographs.	720
Lameroo and District Historical Society	Develop the museum extension to include a work area, storeroom and display areas.	5 900
Lameroo and District Historical Society	Develop a display to interpret the railway station building.	6 500
Latvian Museum	Develop a multi-media DVD presentation of the history of Adelaide's Latvian Saturday School.	4 246

Continues over page



## 10. Museums Accreditation and Grants Program (cont.)

Organisation	Project	Grant \$
Latvian Museum	Purchase textile and other storage boxes for storage of collection items.	410
Loxton Historical Village	Upgrade soundscapes.	3 900
Mallala Museum	Develop the exhibition <i>Mallala A Century of Change</i> .	15 000
Mallee Tourist and Heritage Centre	Develop <i>Mallee Women</i> display project stage three.	4 000
Mannum Dock Museum of River History	Restore and interpret the Key's Beam Engine.	6 435
Mary MacKillop Penola Centre	Construct a display cabinet and display collection of fossils named by Julian Tenison Woods.	2 000
Melrose Courthouse Heritage Centre	Develop a series of interpretive signs to form a self-guided walk linking various police buildings in the museum grounds.	5 392
Melrose Courthouse Heritage Centre	Undertake conservation treatment of a workbook belonging to surveyor Thomas Nutt.	900
Millicent National Trust Living History Museum	Digitise photographic collection.	4 000
Norwood History Centre	Develop the exhibition <i>Stories From The Heart</i> about the history of Italian migration in the City of Norwood, Payneham & St Peters.	8 000
Old Highercombe Hotel Museum	Develop a permanent display telling the history of the Old Highercombe Hotel building.	6 330
Penneshaw Maritime and Folk Museum	Undertake a stock-take of the collection and add images to the collection database.	4 000
Port Victoria Maritime Museum	Develop an interactive component for a new display about the life at sea of Cape Horners and their visits to Port Victoria.	1 400
Radium Hill Heritage Museum	Develop display panels about the industrial, social and cultural history of Radium Hill uranium mine and township.	4 500
Sheep's Back Museum	Redevelop displays on levels two and three of the Mill Building.	10 000
Wallaroo Heritage and Nautical Museum	Conserve 1910 Wallaroo Waterside Workers Federation Banner.	10 000
		<b>Total \$152 000</b>



Museum volunteers and Amanda James at Clayton Farm Museum

## 11. South Australian History Fund

The South Australian History Fund (SAHF) aims to meet a pressing need for financial assistance for individual authors and organisations to help research and publish works of non-fiction relating to South Australian history. The fund also assists South Australia's history sector, which includes historical societies, museums and community organisations to undertake projects to preserve and present their community history.

In 2005-06 research grants were offered for the second time since they were introduced for a trial period of three years in 2004-05. The South Australian History Fund Research Grants support major research projects that will culminate in significant publications of South Australian history.

There was \$35 000 available for distribution in 2005-06. Seventy-five applications were received, seeking a total of \$181 679. The assessment committee comprised Margaret Anderson, Chief Executive History Trust, Kate Walsh, Manager, Community History Unit, and independent assessors June Edwards, Collection Development Archivist, State Library of South Australia and Alison Mackinnon, President of the History Council of South Australia. Amanda James, Community History Officer, was the administrative co-ordinator of the fund.

Applicant	Grant Type	Project	Grant \$
Cameron Raynes	Publication	Publish <i>The Last Protector: The removal of Aboriginal children from their parents in South Australia under W R Penhall, 1939-1953</i>	3 000
Christine Garnaut and Julie Collins	Research	Research and publish <i>How to Build a Good Home Cheaply: A History of the South Australian Home Builders' Club</i>	5 000
Collingrove Homestead - National Trust SA	Project	Produce an oral history with Colin Angas about growing up at Collingrove in the 1920s and 1930s	575
Dublin History Group	Project	Purchase archival products for storage of historic photographs, documents and newspapers	320
Geoffrey Manning	Publication	Publish <i>From Aaron Creek to Zion Hill - The Place Names of South Australia</i>	2 000
Handspinners and Weavers Guild of SA	Project	Produce text panels and brochure for the exhibition <i>Cultural Connections - migrant influences on the Handspinners and Weavers Guild of SA</i>	805
Janice Pavils	Publication	Publish <i>Anzac Day: The South Australian Story</i>	3 000
Mount Gambier Heritage and History Society	Project	Purchase archival products for storage of photographic collection	400
Mount Lofty Districts Historical Society	Project	Rehouse photographic collection	700
Pauline Payne	Research	Produce a biography of Dr Richard Schomburgk, explorer, gardener and botanist	5 000
Peter Knife	Publication	Publish <i>Peninsula Pioneer: A history of the railways of Eyre Peninsula and their role in the settlement and development of the region</i>	2 000
Robert Foster and Amanda Nettlebeck	Publication	Publish <i>Writing William Willshire: Race, Nationalism and the Central Australian Frontier</i>	3 000
Royal Agricultural and Horticultural Society of SA	Project	Rehouse and store photographic collection	700
South Australian Link-up Program	Research	Conduct research into 'recently discovered homes' as part of the <i>Finding Your Own Way - a Guide to Records of Children's Homes in South Australia</i> project	2 000
Southern Eyre Peninsula Family & Local History Group	Project	Digitise photographic negative collection	500
St Jakobi School Lyndoch	Publication	Publish a history of St Jakobi Lyndoch Lutheran School	2 000
The deLissa Association of Early Childhood Graduates	Project	Continue oral history project with graduates of the Kindergarten Training College	1 000
Tintinara Hall Committee	Project	Conservation treatment of the theatrical backdrop from the Tintinara Institute, painted by Otho Hewett in 1931	1 000
University of South Australia	Research	Undertake an oral history research project and produce a publication using the experiences of Narrandera elder Major Sumner	1 000
Yartawarli Aboriginal Corporation Resource Agency	Project	Undertake an oral history project with Adna-mat-na women from the Flinders Ranges region	1 000
<b>Total</b>			<b>35 000</b>

## 12. Publications

---

- Drew, L (ed) *History Matters*. 3 issues per year
- Walsh, K and James, A *MAGP News*. Six bi-monthly issues for distribution to museums registered and accredited in the Museums Accreditation and Grants Program
- Szekeres, V 'New Protocols: Dialogues Across Cultures' Museums and Galleries NSW regional conference in Wagga on 11 November 2005. The Gordon Darling Foundation is supporting a publication of this paper.

## 13. Unpublished Conference Papers

---

- Anderson, M 'Women, marriage and fertility in Adelaide, 1850-1880', in M. Anderson, K. Walsh & B. Whimpress (eds.) Adelaide: *The City in Focus 1850-1880* (Adelaide, Wakefield Press, in press).
- Anderson, M 'Marriage, fertility and the 'new women' of South Australia': should feminist historians care about the 'fertility transition'? Paper presented to the Australian Feminist Studies Conference, Adelaide, 2005.
- Dermody, K 'German Special Project Workers in South Australia 1949-1952'. Presented at the University of Adelaide Conference *The German Presence in South Australia*, Adelaide, October 2005
- Finnimore, C 'Grief, Protest and Public History: The Memorial Wall in the Migration Museum'. Museums Australia Conference, Brisbane 2006
- James, A 'Disaster Planning for Small Museums'. A talk at the National Trust of South Australia's annual general meeting, November 2005
- Jones, K 'Maritime Museums: Sink or Swim'. Presented at the XII Triennial Conference of the International Congress of Maritime Museums, Auckland, November 2005
- Murphy, L 'Creative Connections'. Presented at the Museums Australia National Conference, *Cities, Cultural Spaces, Communities*, Brisbane May 2005
- Murphy, L 'Creative Connections'. Presented at the XII Triennial Conference of the International Congress of Maritime Museums, Auckland, November 2005
- Murphy, L 'Outreach Education'. Presented at the Early Childhood National Conference, Adelaide, November 2005
- Murphy, L 'SA Maritime Museum Education: Past, Present, Future'. Presented at the National History Teachers Conference, Adelaide, October 2005
- Murphy, L 'Using Mobile Technologies'. Presented at the National Conference of the Society for the Provision of Education in Rural Australia, Sydney, October 2005
- Murphy, L 'Using Mobile Technologies'. Presented at the Department of Education and Children's Services E-Learning Expo, Adelaide, April 2006
- Russell, A 'Preparing the Plot: Involving our Communities in Interpretation'. Presented at the State History Conference, Adelaide 2006
- Seager, B 'The Critiquers Panel'. Presented at the Museums Australia National Conference, *Cities, Cultural Spaces, Communities*, Brisbane May 2006
- Szekeres, V 'South Australia's Cultural Identity: Myth or Reality?' State History Conference, Adelaide 2006

## 14. Exhibition Program

### Community Access

<b>Migration Museum The Forum</b> The Forum is available for community groups to mount exhibitions about their own history and experience.	<p><i>Our Place Our Part.</i> The Community History Unit with regional representatives from Moonta, Radium Hill, Barossa Valley, Strathalbyn and Norwood. 6 June – 5 September 2005</p> <p><i>Campbelltown: Its History &amp; Its People.</i> The Campbelltown Historical Society Inc. 10 September – 30 November 2005</p> <p><i>Dear Dr Janzow: Australia's Lutheran Churches and Refugees from Hitler's Germany.</i> Jewish Refugees and the Lutheran Church in SA. 5 December 2005 – 3 March 2006</p> <p><i>Spin &amp; Weave a Thread.</i> Handspinners &amp; Weavers Guild of SA Inc. 6 March – 31 May 2006</p> <p><i>Conquering the Continent.</i> John McDouall Stuart Society. 3 June – 28 August 2006</p>
<b>National Motor Museum Club Space</b> Museum initiative to give motoring clubs a forum to display club member vehicles and promote their club activities.	<p>Holden Dealer Team 25<sup>th</sup> Anniversary. 3 July 2005 – 8 October 2005</p> <p>50 Years Of The Citroen Ds. 9 October 2005 – 15 January 2006</p> <p>Oldsmobile Car Club. 16 January 2006 – 8 April 2006</p> <p>Torana Car Club. 9 April 2006 – 10 July 2006</p>
<b>South Australian Maritime Museum Black Diamond Corner</b>	<p><i>Port Adelaide Historical Archaeology Project.</i> Dr Susan Briggs, Flinders University July 2005 – 31st May 2006</p> <p><i>Plus Connections, Women's Health through Creativity.</i> Dale Street Women's Health Centre 1st June – 31st September 2006</p>

### New Permanent Exhibitions

<b>Migration Museum</b>	The Premier the Hon Mike Rann, visited the Migration Museum on 27 July 2005 to announce a grant to complete the redevelopment of the two galleries that present the history of immigration to South Australia in the 20 <sup>th</sup> century.
<b>History Trust Exhibition Gallery</b>	<p><i>An Adelaide Snapshot 1865: Townsend Duryea's Panorama.</i> Mobile version installed on permanent basis in the Drill Hall of the Torrens Parade Ground. Ongoing.</p>

## 14. Exhibition Program (cont.)

### Temporary Exhibitions — In-house

<b>History Trust Exhibition Gallery</b>	<i>Gallipoli: The South Australian Story.</i> 19 April 2005 – 31 August 2006
<b>Migration Museum</b>	<i>Memories &amp; Dreams: Banners Project.</i> 1 November – 31 December 2005  <i>Three Sides of the Coin: Gambling in Australia.</i> The Gambling Awareness Unit of the Department of Health, the Health Promotions Unit and Department of Education and Community Services. 7 April - 9 October 2006
<b>National Motor Museum</b>	<i>Inspiring Passion: Design by Holden.</i> 26 March 2005 – 26 March 2006  <i>Way to Go.</i> September 2004 – August 2005  <i>Weird Wheels.</i> 3 September 2005 – 14 August 2006
<b>South Australian Maritime Museum</b>	<i>Wrecked! Tragedy and the Southern Seas.</i> 18 March 2005–16 October 2005  <i>Ports of Call.</i> 29 October – 4 December 2005  <i>South Australia on the Map 1606–2006.</i> 13 April – 21 June 2006



*The Immigrants monument at the Migration Museum*

## 14. Exhibition Program (cont.)

### Touring Exhibitions – Incoming

<b>Migration Museum</b>	<p><i>Egon Kisch.</i> State Library of NSW and Goethe Institute Victoria. 17 June – 1 November 2005</p> <p><i>Between Memory &amp; Hope – Iraqi Women's Quilts.</i> Quilts made by Iraqi women in Melbourne and brought to Adelaide by the Women's League for Peace and Freedom. 7 November – 2 December 2005</p> <p><i>Fall of Saigon: Collected Fragments of the Post 75 Generation.</i> From the Casula Powerhouse Arts Centre, NSW. 21 January – 31 March 2006</p>
<b>SA Maritime Museum</b>	<p><i>Trafalgar: the Naval Legend.</i> 31 September – 7 December 2005</p> <p><i>Just Add Water: Schemes and Dreams for a Sunburnt Country.</i> 16 December 2005 – 2 April 2006</p>

### Touring Exhibitions – Outgoing

<b>History Trust of South Australia</b>	<p><i>Gallipoli: The South Australian Story.</i></p> <p>Visited: Farmshed Museum, Kadina, July 2005; Ardrossan Museum, August 2005; Keith National Trust Museum, September 2005; Prospect Hill Historical Museum, October 2005; Norwood History Centre, November-December 2005; Unley Museum, January-February 2006; Port Pirie National Trust Museum, March-April 2006; Whyalla Maritime Museum, May-June 2006</p>
<b>Migration Museum</b>	<p><i>They Took Our Land and then Our Children: 1923 Ngarrindjeri Petition</i></p> <p>Visited: St Francis School, Lockleys, July/August 2005; Unity College, Murray Bridge, August/September 2005; Seaford 6-12 School, Seaford, September/October 2005; Windsor Gardens Vocational College, October 2005; Tabour College, Goodwood, November 2005; Marymount College, Hove, March 2006; Seaton High School, Seaton, March/April 2006; St Francis de Sales College, Mt Barker May/June 2006</p> <p><i>Fall of Saigon: Collected Fragments of the Post-75 Generation panels.</i></p> <p>Produced by Assistant Curator Jill MacKenzie. On display in the offices of the South Australian Multicultural and Ethnic Affairs Commission, April-July 2006</p>

## 14. Exhibition Program (cont.)

### Events / Audience Development

History Trust	<p><i>SA History Week 2006</i>. 20–28 May 2006</p> <p>15<sup>th</sup> State History Conference, <i>In History We Trust</i>. University of Adelaide, Adelaide, 26–28 May 2006</p>
Migration Museum	<p><b>Book and Website Launches</b></p> <p>Janice Maddern, <i>Just a Girl From Crewe</i> was launched by Viv Szekeres on Saturday 23 October 2005</p> <p>Dr Peter Monteith, <i>Dear Dr Janzow: Australia's Lutheran Churches and Refugees from Hitler's Germany</i>, book launched by Viv Szekeres on 5 December 2005</p> <p>Women from Non-English Speaking Backgrounds Domestic Violence Action Group (NESBDVAG) Website launched by the Hon Stephanie Key on 3 February 2005</p> <p><b>Exhibition Launches</b></p> <p><i>Campbelltown: Its History &amp; Its People</i> launched by The Hon Christopher Pyne on Saturday 17 September 2005</p> <p><i>Between Memory and Hope, Tears for the Future: Iraqi Women's Quilts</i> launched by Dr Zakia Sharif on the 9 November 2005</p> <p><i>Dear Dr Janzow: Australia's Lutheran Churches and Refugees from Hitler's Germany</i> launched by Viv Szekeres on 5 December 2005</p> <p><i>The Fall of Saigon</i> launched by the Hon Michael Atkinson on 15 January 2006, the hottest day for 65 years</p> <p><i>Three Sides of the Coin: Gambling in Australia</i> launched as part of Gambling Awareness Week by The Hon Jay Weatherill, Minister for Families and Communities, on 7 May 2006</p> <p><b>Foundation Events</b></p> <p>The Foundation's Annual General Meeting was held on the evening of 17 October with about 35 members attending. Designer Marg Degotardi and Viv Szekeres gave a presentation about the design ideas for the redevelopment</p> <p>Migration Museum Foundation Morning Tea on 20 December 2005</p> <p>Foundation Morning Tea on 16 May 2006, guests included Consul General Mr Dimitrios Hatzapoulos, John Lesser from the Industrial Relations Commission and Vice President of the Greek Community</p> <p><i>The Immigrants</i> – The dedication of the monument on Sunday 4 June 2006 by Her Excellency Marjorie Jackson-Nelson, AC, CVO, MBE, Governor of South Australia and unveiling of the plaque by The Right Hon the Lord Mayor of Adelaide, Michael Harbison; guests included Lieutenant Governor Bruno Krumsins, the Attorney-General The Hon Michael Atkinson, several members of Parliament and Mr and Mrs Rigoni who had travelled from the town of Asiago to represent the Regional Government in Northern Italy</p>

## 14. Exhibition Program (cont.)

---

### Events / Audience Development

<b>Migration Museum</b> (Cont.)	<b>Other Events</b> <i>British Child Migrants Memorial &amp; Plaque Ceremony</i> on 18 November 2005. Dedication by David Fawcett, Federal member for Wakefield and the Hon Jay Weatherill, Minister for Families and Communities. The statue and brass plaque was funded by the Federal Government and produced by artist Andrew Stock The Albanian Association held a candlelight ceremony in the courtyard to mark the death of the Bosnian President on 25 January 2006 The Baltic Communities Council held their annual wreath laying ceremony at the Memorial Wall on Saturday 10 June attended by Senator Annette Hurley Oral History Association of Australia display in the Museum's foyer during <i>SA History Week</i> Vogt Family Reunion (with guided tours) on Sunday 30 October 2005 <i>Tasting Australia</i> from 21–30 October 2005 presenting Preserving Cultures; Preserving Cultures Festival on Sunday 23 October 2005 Games we used to Play Family Fun Day (The Pageant on The Terrace) on 12 November 2005 'Who's Laughing Now?' workshops with comedian Simon Palomares for students and teachers, 15 and 16 June 2006 (in collaboration with Parallelo and Outreach Education) Darryl Pfitzner Milika gave a talk during SALA Week on Friday 12 August 2005, on his <i>Impact: An Illustrated History</i> exhibition in Gallery 1
<b>National Motor Museum</b>	<i>2005 Bay to Birdwood Classic.</i> 25 September 2005 <i>Rock and Roll Rendezvous.</i> 14 April 2006
<b>SA Maritime Museum</b>	<i>Flinders Ports Community Access Day.</i> Offering free admission on 26 February 2006 <i>Flinders Ports Community Access Day.</i> Offering free admission on 18 June 2006 <i>Festival of Maritime Trades.</i> 21 and 28 May 2006 <i>Dolphin Spotting Cruises.</i> 16–26 January and 17–28 April 2006 <i>Maritime Mayhem.</i> Vacation Program, 1–16 October 2005 and 17–28 April 2006 <i>Splash Theatre, The Water Show,</i> 2–20 January 2006



## 15. Financial Statement for the year ended 30 June 2006

---



**Government of South Australia**  
Auditor-General's Department

*Our Ref: A06/091*

27 September 2006

Mr P Broderick  
Chairperson  
History Trust of South Australia  
PO Box 1836  
ADELAIDE SA 5001

9th Floor  
State Administration Centre  
200 Victoria Square  
Adelaide SA 5000  
DX 56208  
Victoria Square  
Tel +618 8226 9640  
Fax +618 8226 9688  
ABN 53 327 061 410  
audgensa@audit.sa.gov.au  
www.audit.sa.gov.au

Dear Mr Broderick

### **Independent Audit Report for the year ended 30 June 2006**

The audit of the accounts of the History Trust of South Australia (the Trust) for the year ended 30 June 2006 has been completed.

The audit coverage encompassed all areas of the Trust's financial operations including payment of accounts, cash receipting and banking, debtors, asset registers and management of collections. Matters arising from the audit were referred in writing to the Chief Executive and a satisfactory response was received.

Returned herewith are the Trust's financial statements together with my Independent Audit Report which is unqualified.

Yours sincerely

K I MacPherson  
**AUDITOR-GENERAL**

**INDEPENDENT AUDIT REPORT**

**Government of South Australia**  
Auditor-General's Department

9th Floor  
State Administration Centre  
200 Victoria Square  
Adelaide SA 5000  
DX 56208  
Victoria Square  
Tel +618 8226 9640  
Fax +618 8226 9688  
ABN 53 327 061 410  
audgensa@audit.sa.gov.au  
www.audit.sa.gov.au

**TO THE CHAIRPERSON  
HISTORY TRUST OF SOUTH AUSTRALIA**

**SCOPE**

As required by section 31 of the *Public Finance and Audit Act 1987* and subsection 19(2) of the *History Trust of South Australia Act 1981*, I have audited the financial report of the History Trust of South Australia and the controlled entity for the financial year ended 30 June 2006. The financial report comprises:

- An Income Statement;
- A Balance Sheet;
- A Cash Flow Statement;
- A Statement of Changes in Equity;
- Notes to the Financial Statements;
- Certificate by the Chief Executive and Board Chairperson

The financial report includes the consolidated financial statements of the consolidated entity, comprising the History Trust of South Australia and the entity it controlled at the year's end or from time to time during the financial year.

The members of the Board are responsible for the financial report. I have conducted an independent audit of the financial report in order to express an opinion on it to the Board Chairperson.

The audit has been conducted in accordance with the requirements of the *Public Finance and Audit Act 1987* and Australian Auditing and Assurance Standards to provide reasonable assurance whether the financial report is free of material misstatement.

Audit procedures included examination, on a test basis, of evidence supporting the amounts and other disclosures in the financial report and the evaluation of accounting policies and significant accounting estimates. These procedures have been undertaken to form an opinion whether, in all material respects, the financial report is presented fairly in accordance with Treasurer's Instructions promulgated under the provisions of the *Public Finance and Audit Act 1987*, Accounting Standards and other mandatory professional reporting requirements in Australia so as to present a view which is consistent with my understanding of the History Trust of South Australia's financial position, the results of its operations and its cash flows.

The audit opinion expressed in this report has been formed on the above basis.

**AUDIT OPINION**

In my opinion, the financial report presents fairly in accordance with the Treasurer's Instructions promulgated under the provisions of the *Public Finance and Audit Act 1987*, applicable Accounting Standards and other mandatory professional reporting requirements in Australia, the financial position of the History Trust of South Australia and the consolidated entity as at 30 June 2006, the results of their operations and their cash flows for the year then ended.

**K I MacPherson**  
**Auditor-General**  
27 September 2006

# History Trust of South Australia

## INCOME STATEMENT

For the Year Ended 30 June 2006

		Consolidated		HTSA	
	Note	2006	2005	2006	2005
	Number	\$'000	\$'000	\$'000	\$'000
<b>Expenses</b>					
Employee benefits costs	6	2 825	2 712	2 825	2 712
Supplies and services	7	2 781	2 487	2 695	2 469
Depreciation	8	586	559	586	559
Grant payments	9	174	188	174	188
Net loss from the disposal of assets	13	247	151	247	151
<b>Total Expenses</b>		<b>6 613</b>	<b>6 097</b>	<b>6 527</b>	<b>6 079</b>
<b>Income</b>					
Revenue from fees and charges	10	979	950	933	900
Interest revenues	11	122	76	99	55
Resources received free of charge	17	264	258	264	258
Other income	12	1 263	958	1 208	958
<b>Total Income</b>		<b>2 628</b>	<b>2 242</b>	<b>2 504</b>	<b>2 171</b>
<b>Net Cost of providing services</b>		<b>(3 985)</b>	<b>(3 855)</b>	<b>(4 023)</b>	<b>(3 908)</b>
<b>Revenues from / Payments to SA Government</b>					
Revenue from SA Government – Recurrent Operating		3 759	3 839	3 759	3 839
<b>Total Revenues from SA Government</b>		<b>3 759</b>	<b>3 839</b>	<b>3 759</b>	<b>3 839</b>
<b>Net Result</b>		<b>(226)</b>	<b>(16)</b>	<b>(264)</b>	<b>(69)</b>
<b>The net result is attributable to the SA Government as owner</b>					

15

## History Trust of South Australia

**BALANCE SHEET**

As at 30 June 2006

		Consolidated		HTSA	
	Note	2006	2005	2006	2005
	Number	\$'000	\$'000	\$'000	\$'000
<b>Current Assets</b>					
Cash and cash equivalents	24	1 629	1 252	1 610	1 224
Receivables	15	48	21	48	21
Inventories		81	82	81	82
Investments	16	390	343	-	-
Other current assets		-	55	-	55
<b>Total Current Assets</b>		<b>2 148</b>	<b>1 753</b>	<b>1 739</b>	<b>1 382</b>
<b>Non-Current Assets</b>					
Property, plant and equipment	17	17 251	17 814	17 251	17 814
Heritage collections	17	12 482	12 428	12 482	12 428
<b>Total Non-Current Assets</b>		<b>29 733</b>	<b>30 242</b>	<b>29 733</b>	<b>30 242</b>
<b>Total Assets</b>		<b>31 881</b>	<b>31 995</b>	<b>31 472</b>	<b>31 624</b>
<b>Current Liabilities</b>					
Payables	18	140	116	140	116
Short-term and long term employee benefits	19	299	244	299	244
Short-term provisions	20	13	12	13	12
<b>Total Current Liabilities</b>		<b>452</b>	<b>372</b>	<b>452</b>	<b>372</b>
<b>Non-Current Liabilities</b>					
Payables	18	32	38	32	38
Long-term employee benefits	19	338	340	338	340
Long-term provisions	20	35	32	35	32
<b>Total Non-Current Liabilities</b>		<b>405</b>	<b>410</b>	<b>405</b>	<b>410</b>
<b>Total Liabilities</b>		<b>857</b>	<b>782</b>	<b>857</b>	<b>782</b>
<b>Net Assets</b>		<b>31 024</b>	<b>31 213</b>	<b>30 615</b>	<b>30 842</b>
<b>Equity</b>					
Retained earnings		21 360	21 586	20 951	21 215
Asset revaluation reserve		9 664	9 627	9 664	9 627
<b>Total Equity</b>		<b>31 024</b>	<b>31 213</b>	<b>30 615</b>	<b>30 842</b>
<b>Equity is attributable to the SA Government as owner</b>					
Commitments for expenditure	22				
Contingent assets and liabilities	23				

## History Trust of South Australia

## STATEMENT OF CHANGES IN EQUITY

For the Year Ended 30 June 2006

	Consolidated			HTSA		
	Asset Revaluation Reserve \$'000	Retained Earnings \$'000	Total \$'000	Asset Revaluation Reserve \$'000	Retained Earnings \$'000	Total \$'000
<b>Balance at 30 June 2004</b>	6 421	20 602	27 023	6 421	20 284	26 705
Recognition of Port Adelaide Lighthouse as at 1 July 2004	-	1 000	1 000	-	1 000	1,000
Gain on revaluation of property during 2004-05	3 139	-	3 139	3 139	-	3,139
Gain on revaluation of heritage collections during 2004-05	67	-	67	67	-	67
<b>Net income / expense recognised directly in equity for 2004-05</b>	3,206	1,000	4,206	3,206	1,000	4,206
Net result for 2004-05	-	(16)	(16)	-	(69)	(69)
<b>Total recognised income and expense for 2004-05</b>	3,206	984	4,190	3,206	931	4,137
<b>Balance at 30 June 2005</b>	9,627	21,586	31,213	9,627	21,215	30,842
Gain on revaluation of heritage collections during 2005-06	37	-	37	37	-	37
<b>Net income / expense recognised directly in equity for 2005-06</b>	37	-	37	37	-	37
Net result for 2005-06	-	(226)	(226)	-	(264)	(264)
<b>Total recognised income and expense for 2005-06</b>	37	(226)	(189)	37	(264)	(227)
<b>Balance at 30 June 2006</b>	<b>9,664</b>	<b>21,360</b>	<b>31,024</b>	<b>9,664</b>	<b>20,951</b>	<b>30,615</b>

All changes in equity are attributable to SA Government as owner

# History Trust of South Australia

## CASH FLOW STATEMENT

For the Year Ended 30 June 2006

		Consolidated		HTSA	
	Note	2006	2005	2006	2005
	Number	\$'000	\$'000	\$'000	\$'000
<b>Cash flows from Operating Activities</b>					
<b>Cash Outflows</b>					
Employee benefits payments		(2 765)	(2 638)	(2 765)	(2 638)
Supplies and services		(2 710)	(2 524)	(2 624)	(2 506)
Grant payments		(174)	(188)	(174)	(188)
<b>Cash used in operations</b>		<b>(5 649)</b>	<b>(5 350)</b>	<b>(5 563)</b>	<b>(5 332)</b>
<b>Cash Inflows</b>					
Receipts from fees & charges		902	937	907	933
Interest received		125	75	97	54
Other receipts		1 263	963	1 209	963
<b>Cash generated from Operations</b>		<b>2290</b>	<b>1 975</b>	<b>2 213</b>	<b>1 950</b>
<b>Cash flows from SA Government</b>					
Receipts from SA Government – Recurrent Operating		3 759	3 910	3 759	3 910
<b>Cash generated from SA Government</b>		<b>3 759</b>	<b>3 910</b>	<b>3 759</b>	<b>3 910</b>
<b>Net cash provided by operating activities</b>	24	<b>400</b>	<b>535</b>	<b>409</b>	<b>528</b>
<b>Cash flows from Investing Activities</b>					
<b>Cash Outflows</b>					
Purchase of property, plant and equipment		(23)	(15)	(23)	(15)
Purchase of heritage collections		-	(18)	-	(18)
<b>Cash used in investing activities</b>		<b>(23)</b>	<b>(33)</b>	<b>(23)</b>	<b>(33)</b>
<b>Net cash used in investing activities</b>		<b>(23)</b>	<b>(33)</b>	<b>(23)</b>	<b>(33)</b>
<b>Net Increase in cash and cash equivalents</b>		<b>377</b>	<b>502</b>	<b>386</b>	<b>495</b>
Cash and cash equivalents at the beginning of the financial year		1 252	750	1 224	729
<b>Cash and cash equivalents at the end of the financial year</b>	24	<b>1 629</b>	<b>1 252</b>	<b>1 610</b>	<b>1 224</b>

## NOTES TO THE FINANCIAL STATEMENTS

### Note 1. Objectives of the History Trust of South Australia (the Trust)

The Trust's objectives are to:

- raise the level of community and schools-based participation in the study and enjoyment of South Australian history and the preservation of its evidence;
- mount popular exhibitions, events and other public programs on South Australian history and actively involve the community in their research and preparation;
- preserve the state's collection of movable items;
- provide advice and assistance to museums, historical societies and authors.

The Trust is charged with the management of the History Trust of South Australia, as prescribed under the *History Trust of South Australia Act 1981*.

The Trust's principal source of funds consists of grants from the State Government.

### Note 2. Summary of Significant Accounting Policies

#### a) Basis of Accounting

The financial report is a general purpose financial report. The accounts have been prepared in accordance with applicable Australian Accounting Standards and Treasurer's Instructions and Accounting Policy Statements promulgated under the provisions of the Public Finance and Audit Act 1987 (PFAA).

These financial statements are the first statements to be prepared in accordance with Australian equivalents to International Financial Reporting Standards (AIFRS).

AASB1 *First time adoption of AIFRS* has been applied in preparing these statements. Previous financial statements were prepared in accordance with Australian Generally Accepted Accounting Principles.

Reconciliations explaining the transition to AIFRS as at 1 July 2004 and 30 June 2005 are at note 4.

The Trust's Income Statement, Balance Sheet and Statement of Changes in Equity have been prepared on an accrual basis and are in accordance with the historical cost convention, except for certain assets that were valued in accordance with the valuation policy applicable.

The Cash Flow Statement has been prepared on a cash basis.

#### b) The Reporting Entity

The consolidated financial statements have been prepared by combining the financial statements of all entities that comprise the consolidated entity being the Trust and the Migration Museum Foundation Incorporated, in accordance with AASB 127 *Consolidated and Separate Financial Statements*. A list of controlled entities is at note 26. Consistent accounting policies have been applied and all inter-entity balances and transactions arising within the consolidated entity have been eliminated in full.

#### c) Comparative Information

The presentation and classification of items in the financial report are consistent with prior periods except where a specific Accounting Policy Statement or Australian Accounting Standard has required a change.

Comparative figures have been restated on an AIFRS basis except for financial instrument information as permitted by AASB 1. The comparatives have been restated to assist users' understanding of the current reporting period and do not replace the original financial report for the preceding period.

Note 4 provides a detailed analysis of comparative amounts that have been reclassified as a result of adoption of AIFRS.



d) Rounding

All amounts in the financial statements have been rounded to the nearest thousand dollars (\$'000)

e) Income and Expenses

Income and expense are recognised in the Trust's Income Statement when and only when it is probable that the flow of economic benefits to or from the entity will occur and can be reliably measured.

Income and expenses have been classified according to their nature in accordance with Accounting Policy Framework II *General Purpose Financial Reporting Framework* APS 3.5.

*Transactions with SA Government*

In accordance with Accounting Policy Framework II *General Purpose Financial Reporting Framework* APS 4.1 and APS 4.2 the financial report's notes disclose income, expenses, financial assets and financial liabilities where the counter party / transaction is with an entity within the SA Government as at the reporting date, classified according to their nature.

Transactions with SA Government entities below the threshold of \$100,000 have been included with the non-government transactions, classified according to their nature.

*Income*

Income from the sale of goods is recognised upon the delivery of goods to customers. Interest revenue is recognised on a proportional basis taking into account the interest rates applicable to the financial assets. Income from the rendering of a service is recognized upon the delivery of the service to the customers. Government Grants are recognized as revenues in the period in which the Trust obtains control over the grants. Control over these revenues is normally obtained upon receipt and they are accounted for in accordance with Treasurer's Instruction 3 Appropriation.

*Resources received free of charge*

Resources received free of charge are recorded as revenue in the Income Statement at their fair value in accordance with Accounting Policy Framework III *Asset Accounting Framework* APS 2.12.

f) Non-Current Assets Acquisition and Recognition

Assets are initially recorded at cost or at the value of any liabilities assumed, plus any incidental cost involved with the acquisition. Where assets are acquired at no value, or minimal value, they are recorded at their fair value in the Balance Sheet. If however, the assets are acquired at no or nominal value as part of a restructuring of administrative arrangements then the assets are recorded at the value recorded by the transferor prior to transfer.

g) Cash and Cash Equivalents

For the purposes of the Cash Flow Statement, cash and cash equivalents includes cash at bank and on hand and short term deposits at call.

Cash is measured at nominal value.

h) Receivables

Receivables include amounts receivable from trade and other accruals.

Trade receivables arise in the normal course of selling goods and services to the public and agencies. Trade receivables are generally receivable within 30 days after the issue of an invoice or the goods/services have been provided under a contractual arrangement.

Other debtors arise outside the normal course of selling goods and services to other entities and to the public.

The Trust determines the provision for doubtful debts based on a review of balances within trade receivables that are unlikely to be collected. These are generally receivables that are 90 days or more overdue.

i) Inventories

Inventories (other than those held for distribution at no or nominal consideration) are measured at the lower of cost or their net realisable value.



## j) Current and Non-Current Items

Assets and liabilities are characterised as either current or non-current in nature. The Trust has a clearly identifiable operating cycle of twelve months. Assets and liabilities that are sold, consumed or realised as part of the normal operating cycle even when they are not expected to be realised within the twelve months after the reporting date have been classified as current assets or current liabilities. All other assets and liabilities are classified as non-current.

## k) Other Financial Assets

In accordance with the Accounting Policy Statements contained in the Accounting Policy Framework IV *Financial Asset and Liability Framework*, the Authority measures financial assets and debt at historical cost.

## l) Revaluation of Non-Current Assets

*Land and Buildings*

Land and buildings have been valued at written down current cost (a proxy for fair value). Valuations of land and buildings were determined as at 30 June 2005 by Tim Nankivell, Australian Valuation Office. Land and buildings are independently valued every three years.

*Plant and Equipment*

Plant and equipment have been valued at historical cost.

*Heritage Collections*

The heritage collections are large and diverse. They include many items that are complex to value given considerations of market value and their unique representation of South Australia's social history.

The heritage collections have been revalued as follows:

- National Motor Museum collections as at 30 June 2004
- Migration Museum collections as at 30 June 2004
- South Australian Maritime Museum collections as at 30 June 2003 and 2006

The Trust adopted the following methodology for valuing heritage assets. Items under \$10 000 were valued by the appropriate internal curator and items over \$10 000 were valued by external valuers listed below. Heritage Collections have been valued at fair value.

The external valuations were carried out by the following recognised industry experts:

<b>Collection</b>	<b>Industry Expert</b>
National Motor Museum	Antony Davies
South Australian Maritime Museum	Christine Courtney, SeaWitch
South Australian Maritime Museum	Sandy Winding, Quin's Yacht Brokerage Pty Ltd
South Australian Maritime Museum	Allan R Rice, Allan Rice Marine Surveys
Migration Museum	Lee Blair-Jenke, Regimentals Antiques
Migration Museum	Michael Treloar, Antiquarian Books
Migration Museum	Anthony Hurl, Tusmore Antiques

m) Depreciation of Non-Current Assets

Depreciation is calculated on a straight-line basis to write off the net cost or revalued amount of each non-current asset over its expected useful life except for land and heritage collections, which are not depreciable. Estimates of remaining useful lives are made on a regular basis for all assets, with annual reassessments for major items.

The expected useful lives are as follows:

Class of Asset	Useful Life (Years)
Buildings and Improvements	20 to 100
Plant and Equipment	3 to 25

Heritage Collections have unlimited useful lives. Their future economic benefits have not been consumed during the financial year. Therefore no depreciation is recognised in respect of these assets.

n) Payables

Payables include creditors, accrued expenses and employment on-costs.

Creditors and accrued expenses represent goods and services provided by other parties during the period that are unpaid at the end of the reporting period. All payables are measured at their nominal amount and are normally settled within 30 days from the date of the invoice or date the invoice is first received in accordance with Treasurer's Instruction 11 *Payment of Creditor's Accounts*.

Employment on-costs include superannuation contributions and payroll tax with respect to outstanding liabilities for salaries and wages, long service leave and annual leave.

o) Employee Benefits

These benefits accrue for employees as a result of services provided up to the reporting date that remain unpaid. Long-term employee benefits are measured at present value and short-term benefits are measured at nominal amounts.

No provision has been made for sick leave as all sick leave is non-vesting and the average sick leave taken in future years by employees is estimated to be less than the annual entitlement of sick leave.

a) *Liabilities for Salaries, Wages and Annual Leave*

Liability for salaries and wages are measured as the amount unpaid at the reporting date at remuneration rates current at reporting date. The annual leave liability is expected to be payable within twelve months and is measured at the undiscounted amount expected to be paid.

b) *Long Service Leave*

An actuarial assessment of Long Service Leave undertaken by the Department of Treasury and Finance based on a significant sample of employees throughout the South Australian public sector determined that the liability measured using the short-hand method was not materially different from the liability measured using the present value of expected future payments. This calculation is consistent with the Trust's experience of employee retention and leave taken.

c) *Superannuation*

Contributions are made by the Trust to several superannuation schemes operated by the State Government and the private sector. These contributions are treated as an expense when they occur. There is no liability for payments to beneficiaries as they have been assumed by the superannuation schemes.

p) Workers Compensation Provision

A liability has been reported to reflect unsettled workers compensation claims. The workers compensation provision is based on an actuarial assessment performed by the Public Sector Occupational Health and Injury Management Branch of the Department for Administrative and Information Services.

## q) Leases

*Operating Leases*

The Trust has entered into a number of operating lease agreements for accommodation where the lessors effectively retain all of the risks and benefits incidental to ownership of the items held under the operating leases.

Operating lease payments are representative of the pattern of benefits derived from the leased assets and accordingly are charged to the Income Statement in the periods in which they are incurred.

## r) Accounting for the Goods and Services Tax (GST)

The amount of GST incurred by the Trust as a purchaser that is not recoverable from the Australian Taxation Office is recognized as part of the cost of acquisition of an asset or part of an item of expense.

The net GST receivable/payable to the Australian Taxation Office is not recognized as a receivable/payable in the Balance Sheet as the Trust is a member of an approved GST group of which Arts SA, a division of the Department of the Premier and Cabinet, is responsible for the remittance and collection of GST. There are no cash flows relating to GST transactions with the Australian Taxation Office in the Cash Flow Statement.

## s) Insurance

The Trust has arranged, through the SA Government Captive Insurance Corporation (SAICORP), to insure all major risks of the Trust. The excess payable under this arrangement varies depending on each class of insurance held.

## t) Principles of Consolidation

The consolidated financial statements incorporate the assets and liabilities of entities controlled by the Trust as at 30 June 2006, and the results of all controlled entities for the year then ended. The effects of all transactions between entities in the consolidated entity are eliminated in full. Refer to note 26.

**Note 3. Financial Risk Management**

The Trust is exposed to minimal financial risks, credit risk and liquidity risk.

Risk management is carried out internally using the DPC risk management framework which is in accordance with Australian Risk Management Standards.

The Trust has non-interest bearing assets (cash on hand and on call and receivables), liabilities (payables) and interest bearing assets (held to maturity investments).

The Trust's exposure to foreign exchange risk and cash flow interest risk is minimal.

The Trust has no significant concentration of credit risk. The Trust has policies and procedures in place to ensure that transactions occur with customers with appropriate credit history.

**Note 4. Changes in Accounting Policies***Explanation of transition to AIFRS for the Consolidated Entity*

The Trust has adopted the AIFRS for the first time for the year ended 30 June 2006.

	At 1/7/04			At 30/6/05		
	Previous GAAP	Adjustments	AIFRS	Previous GAAP	Adjustments	AIFRS
Current assets	1,310	-	1,310	1,753	-	1,753
Non-current assets	26,476	1,000	27,476	29,242	1,000	30,242
Current liabilities	378	-	378	372	-	372
Non-current liabilities	385	-	385	410	-	410
Retained earnings	20,602	1,000	21,602	20,586	1,000	21,586
Asset Revaluation Reserve	6,421	-	6,421	9,627	-	9,627
<b>Total Equity</b>	<b>27,023</b>	<b>-</b>	<b>28,023</b>	<b>30,213</b>	<b>-</b>	<b>31,213</b>
<b>Net Result</b>	<b>(142)</b>	<b>-</b>	<b>(142)</b>	<b>(16)</b>	<b>-</b>	<b>(16)</b>
<b>Total Cash Flows</b>	<b>14</b>	<b>-</b>	<b>14</b>	<b>502</b>	<b>-</b>	<b>502</b>

The adoption of AIFRS has not resulted in any material adjustments to the Income Statement or Cash Flow Statement. However, the following impact has been noted in respect to the Balance Sheet:

The Port Adelaide Lighthouse has been owned and operated by the South Australian Maritime Museum (a business unit of the Trust) since 1985. However, it has been recognised in the Financial Statements as a Heritage Collection asset for the first time in 2005-2006. In accordance with *AASB 108 Accounting Policies, Changes in Accounting Estimates and Errors*, the Lighthouse has been recognised as a prior period error and hence reflected by restating prior period information.

**Note 5. Service/Program Information**

Service/Program information has not been separately disclosed as the Trust has one identifiable major activity, being the maintenance and preservation of the state's historical collections and raising community awareness of the state's history.

**Note 6. Employee benefits costs**

	Consolidated		HTSA	
	2006	2005	2006	2005
	\$'000	\$'000	\$'000	\$'000
Salaries and Wages	2 334	2 207	2 334	2 207
Superannuation	247	236	247	236
Payroll Tax	125	109	125	109
Annual Leave	28	40	28	40
Long Service Leave	57	80	57	80
Other employee related expenses	34	40	34	40
<b>Total employee benefits costs</b>	<b>2 825</b>	<b>2 712</b>	<b>2 825</b>	<b>2 712</b>

**Remuneration of employees**

The number of employees whose remuneration received or receivable falls within the following bands:

	Number of Employees	Number of Employees
	2006	2005
\$100,000 - \$109,999	1	-
\$120,000 - \$129,999	-	1
\$130,000 - \$139,999	1	-
<b>Total number of employees</b>	<b>2</b>	<b>1</b>

The table includes all employees who received remuneration of \$100 000 or more during the year. Remuneration of employees reflects all costs of employment including salaries and wages, superannuation contributions, fringe benefits tax and other salary sacrifice benefits. The total remuneration received by these employees for the year was \$237,320 (\$129 750).

**Targeted Voluntary Separation Packages (TVSPs)**

There were no TVSPs paid in either 2005-2006 or 2004-2005.

**Average number of employees during the reporting period:** On average, the number of full time equivalents employed throughout the reporting period was 46.66 (43.45).

**Remuneration of Board Members**

The number of Board Members who received income from the Trust fell within the following bands:

	Number of Board Members	Number of Board Members
	2006	2005
\$0 - \$9,999	9	9
<b>Total Number of Board Members</b>	<b>9</b>	<b>9</b>

The total income received by these Board Members for the year was \$3,900 (\$7,000).

**Related Party Disclosures**

During the financial year the following persons held a position on the Trust;

Ms F Adler (until December 2005)	Mr J A Fotheringham (until July 2005)
Dr M Allen	Prof. S Magarey (appointed August 2005)
Mr P Broderick (Chair)	Dr A Mackinnon
	Mr B Moulds
	Ms M Nasser-Eddine
	Mr. P. Satchell (appointed June 2006)

The Members of the Trust, or their related entities, have transactions with the Board that occur within a normal customer or supplier relationship on terms and conditions no more favourable than those with which it is reasonably expected the entity would have adopted if the transactions were undertaken with any other entity at arm's length in similar circumstances.

**Note 7. Supplies and services**

	<b>Consolidated</b>		<b>HTSA</b>	
	<b>2006</b>	<b>2005</b>	<b>2006</b>	<b>2005</b>
	<b>\$'000</b>	<b>\$'000</b>	<b>\$'000</b>	<b>\$'000</b>
<b>Supplies and services provided by entities external to the SA Government</b>				
Accommodation	154	156	154	156
Building maintenance	177	140	132	135
Communication and stationery	114	135	110	134
Cost of goods sold	110	116	110	116
Exhibitions and collections	319	229	319	229
Information technology	68	35	68	35
Insurance	-	3	-	3
Marketing and promotion	237	209	236	199
Minor equipment	62	75	62	75
Operating leases	179	13	179	13
Professional fees	2	-	2	-
Projects	131	46	103	46
Travel	42	19	42	19
Other	167	83	159	81
<b>Total supplies and services – Non SA Government entities</b>	<b>1 762</b>	<b>1 259</b>	<b>1 676</b>	<b>1 241</b>
<b>Supplies and services provided by entities within the SA Government</b>				
Accommodation	91	174	91	174
Building maintenance	189	184	189	184
Business services charges	112	112	112	112
Communication and stationery	41	37	41	37
Conservation	234	220	234	220
Exhibitions and collections	80	107	80	107
Information technology	9	2	9	2
Insurance & risk management	102	103	102	103
Marketing and promotion	1	8	1	8
Minor equipment	2	1	2	1
Operating leases	104	136	104	136
Professional fees	31	29	31	29
Projects	-	1	-	1
Travel	1	48	1	48
Other	22	66	22	66
<b>Total supplies and services – SA Government entities</b>	<b>1 019</b>	<b>1 228</b>	<b>1 019</b>	<b>1 228</b>
<b>Total supplies and Services</b>	<b>2 781</b>	<b>2 487</b>	<b>2 695</b>	<b>2 469</b>

**Payments to Consultants**

The number of Consultants who were paid by the Trust fell within the following bands:

	<b>Number of Consultants</b>	<b>Number of Consultants</b>
	<b>2006</b>	<b>2005</b>
\$0 - \$9,999	1	-
<b>Total Number of Consultants</b>	<b>1</b>	<b>-</b>

The total paid by the Trust for the year was \$3 000 (Nil).

**Note 8. Depreciation**

	2006	2005	2006	2005
	\$'000	\$'000	\$'000	\$'000
Buildings and improvements	579	551	579	551
Plant and equipment	7	8	7	8
<b>Total depreciation</b>	<b>586</b>	<b>559</b>	<b>586</b>	<b>559</b>

**Note 9. Grant payments**

	2006	2005	2006	2005
	\$'000	\$'000	\$'000	\$'000
Community History	27	40	27	40
Museum Accreditation and Grant Program	147	148	147	148
<b>Total grant payments</b>	<b>174</b>	<b>188</b>	<b>174</b>	<b>188</b>

**Note 10. Revenue from fees and charges**

	2006	2005	2006	2005
	\$'000	\$'000	\$'000	\$'000
<b>Revenue from fees and charges received/receivable from entities external to the SA Government</b>				
Admissions and Tours	589	582	543	582
Facilities and rent	62	66	62	66
Sales of goods	191	191	191	191
Other Sales	86	111	86	61
<b>Total Revenue from fees and charges</b>	<b>928</b>	<b>950</b>	<b>882</b>	<b>900</b>

**Revenue from fees and charges received/receivable from entities within the SA Government**

Admissions and Tours	39	-	39	-
Facilities and rent	2	-	2	-
Sales of goods	1	-	1	-
Other Sales	9	-	9	-
<b>Total Revenue from fees – SA Government entities</b>	<b>51</b>	<b>-</b>	<b>51</b>	<b>-</b>
<b>Total Revenue from fees</b>	<b>979</b>	<b>950</b>	<b>933</b>	<b>900</b>

**Note 11. Interest revenues**

	Consolidated		HTSA	
	2006	2005	2006	2005
	\$'000	\$'000	\$'000	\$'000
Interest on deposit with Treasurer	99	55	99	55
Other	23	21	-	-
<b>Total Interest revenues</b>	<b>122</b>	<b>76</b>	<b>99</b>	<b>55</b>



**Note 12. Other income**

	2006 \$'000	2005 \$'000	2006 \$'000	2005 \$'000
<b>Other income received/receivable from entities external to the SA Government</b>				
Sponsorship	392	292	337	292
Grants	96	58	96	58
Other Receipts	38	68	38	68
<b>Total other income– Non SA Government entities</b>	<b>526</b>	<b>418</b>	<b>471</b>	<b>418</b>
<b>Other incomes received/receivable from entities within the SA Government</b>				
Sponsorship	128	-	128	-
Grants	415	188	415	188
Artlab Conservation	179	220	179	220
Other Receipts	15	132	15	132
<b>Total other income – SA Government entities</b>	<b>737</b>	<b>540</b>	<b>737</b>	<b>540</b>
<b>Total other income</b>	<b>1 263</b>	<b>958</b>	<b>1 208</b>	<b>958</b>

**Note 13. Net Loss from disposal of assets**

	2006 \$'000	2005 \$'000	2006 \$'000	2005 \$'000
<b>Heritage collection</b>				
Net book value of assets disposed of	247	151	247	151
<b>Net loss from disposal of heritage collections</b>	<b>247</b>	<b>151</b>	<b>247</b>	<b>151</b>

**Note 14. Auditor's remuneration**

	2006 \$'000	2005 \$'000
Audit fees paid/payable to the Auditor-General's Department	30	29
<b>Total audit fees – SA Government entities</b>	<b>30</b>	<b>29</b>

**Other Services**

No other services were provided by the Auditor-General's Department to the Trust.

**Note 15. Receivables**

	2006 \$'000	2005 \$'000	2006 \$'000	2005 \$'000
<b>Receivables from entities external to the SA Government</b>				
Debtors	33	2	33	2
<b>Total receivables – Non SA Government entities</b>	<b>33</b>	<b>2</b>	<b>33</b>	<b>2</b>
<b>Receivables from entities within the SA Government</b>				
Debtors	7	14	7	14
Accrued revenue	8	5	8	5
<b>Total receivables – SA Government entities</b>	<b>15</b>	<b>19</b>	<b>15</b>	<b>19</b>
<b>Total receivables</b>	<b>48</b>	<b>21</b>	<b>48</b>	<b>21</b>

**Note 16. Investments**

	2006 \$'000	2005 \$'000	2006 \$'000	2005 \$'000
Investments with entities other than SAFA:				
<b>Current</b>				
Short term deposit – Savings and Loans Credit Union (SA) Ltd	390	343	-	-
<b>Total current investments</b>	<b>390</b>	<b>343</b>	<b>-</b>	<b>-</b>
<b>Total Investments</b>	<b>390</b>	<b>343</b>	<b>-</b>	<b>-</b>



**Note 17. Property, plant and equipment and heritage collections**

	<b>Consolidated</b>		<b>HTSA</b>	
	<b>2006</b>	<b>2005</b>	<b>2006</b>	<b>2005</b>
	<b>\$'000</b>	<b>\$'000</b>	<b>\$'000</b>	<b>\$'000</b>
<b>Land, buildings and improvements</b>				
Land at Valuation	3 120	3 120	3 120	3 120
Buildings and improvements at Valuation	34 735	34 737	34 735	34 737
Works in Progress	132	132	132	132
Accumulated Depreciation	(20 765)	(20 186)	(20 765)	(20 186)
<b>Total land, buildings and improvements</b>	<b>17 222</b>	<b>17 803</b>	<b>17 222</b>	<b>17 803</b>
<b>Plant and equipment</b>				
Plant and equipment at cost (deemed fair value)	224	289	224	289
Accumulated depreciation	(195)	(278)	(195)	(278)
<b>Total plant and equipment</b>	<b>29</b>	<b>11</b>	<b>29</b>	<b>11</b>
<b>Total heritage collections</b>	<b>12 482</b>	<b>12 428</b>	<b>12 482</b>	<b>12 428</b>
<b>Total property, plant and equipment and heritage collections</b>	<b>29 733</b>	<b>30 242</b>	<b>29 733</b>	<b>30 242</b>

**Valuation of land, buildings and improvements**

A valuation of land, buildings and improvements was performed by an independent valuer from the Australian Valuation Office as at 30 June 2005. The valuation applied the fair value methodology.

**Reconciliation of property, plant and equipment**

	<b>Land</b>	<b>Buildings &amp; Improvements</b>	<b>Works in Progress</b>	<b>Plant &amp; Equipment</b>	<b>Total</b>
	<b>\$'000</b>	<b>\$'000</b>	<b>\$'000</b>	<b>\$'000</b>	<b>\$'000</b>
Carrying amount at 1 July	3 120	14 551	132	11	17 814
Depreciation expense	-	(579)	-	(6)	(585)
Additions	-	-	-	22	22
<b>Carrying amount at 30 June</b>	<b>3 120</b>	<b>13 972</b>	<b>132</b>	<b>27</b>	<b>17 251</b>

**Reconciliation of heritage collections**

	<b>2006</b>	<b>2005</b>
	<b>\$'000</b>	<b>\$'000</b>
Carrying amount at 1 July	12 428	12 257
Resources received free of charge	264	258
Additions	-	18
Disposal	(247)	(151)
Correction of prior year error	-	(21)
Revaluation increments	37	67
<b>Carrying amount at 30 June</b>	<b>12 482</b>	<b>12 428</b>



**Note 18. Payables**

	2006 \$'000	2005 \$'000	2006 \$'000	2005 \$'000
<b>Current</b>				
Creditors and accruals	92	78	92	78
Employee on-costs	48	38	48	38
<b>Total current payables</b>	<b>140</b>	<b>116</b>	<b>140</b>	<b>116</b>
<b>Non-current</b>				
Employee on-costs	32	38	32	38
<b>Total non-current payables</b>	<b>32</b>	<b>38</b>	<b>32</b>	<b>38</b>
<b>Total payables</b>	<b>172</b>	<b>154</b>	<b>172</b>	<b>154</b>
<b>Payables to Non SA Government entities</b>				
Creditors and accruals	101	34	101	34
<b>Total payables – Non SA Government entities</b>	<b>101</b>	<b>34</b>	<b>101</b>	<b>34</b>
<b>Payables to SA Government entities</b>				
Creditors and accruals	33	44	33	44
Employee on-costs	38	76	38	76
<b>Total payables – SA Government entities</b>	<b>71</b>	<b>120</b>	<b>71</b>	<b>120</b>
<b>Total payables</b>	<b>172</b>	<b>154</b>	<b>172</b>	<b>154</b>

**Note 19. Employee benefits**

	Consolidated 2006 \$'000	2005 \$'000	HTSA 2006 \$'000	2005 \$'000
<b>Current</b>				
Annual Leave	189	179	189	179
Short-term Long Service Leave	62	30	62	30
Accrued Salaries and Wages	48	35	48	35
<b>Total Current Employee Benefits</b>	<b>299</b>	<b>244</b>	<b>299</b>	<b>244</b>
<b>Non-Current</b>				
Long term Long Service Leave	338	340	338	340
<b>Total Non-Current Employee Benefits</b>	<b>338</b>	<b>340</b>	<b>338</b>	<b>340</b>
<b>Total Employee Benefits</b>	<b>637</b>	<b>584</b>	<b>637</b>	<b>584</b>

**Note 20. Provisions**

	2006 \$'000	2005 \$'000	2006 \$'000	2005 \$'000
<b>Current</b>				
Provision for workers compensation	13	12	13	12
<b>Total Current Provisions</b>	<b>13</b>	<b>12</b>	<b>13</b>	<b>12</b>
<b>Non-Current</b>				
Provision for workers compensation	35	32	35	32
<b>Total Non-Current Provisions</b>	<b>35</b>	<b>32</b>	<b>35</b>	<b>32</b>
<b>Total Provisions</b>	<b>48</b>	<b>44</b>	<b>48</b>	<b>44</b>

**Reconciliation of the Provision for Workers Compensation**

Provision at the beginning of the financial year	44	46	44	46
Increase (Decrease) in Provision during the year	4	(2)	4	(2)
<b>Provision for Workers Compensation at the end of the financial year</b>	<b>48</b>	<b>44</b>	<b>48</b>	<b>44</b>

H

**Note 21. Financial Instruments**

The following information is provided for the economic entity's financial instruments:

**(a) Terms, Conditions and Accounting Policies**

<b>Financial Instrument</b>	<b>Note</b>	<b>Accounting Policies and Methods</b>	<b>Nature of Underlying Instrument</b>
<b>Financial Assets</b>			
Cash and cash equivalents	24	Cash at bank is recorded at its nominal amount. Interest revenue is recorded on an accrual basis although some funds held within the total cash balance are non-interest bearing.	Interest is calculated based on the average daily balances of the interest bearing funds. The interest bearing funds of the Trust are within the Section 21 Account titled "History Trust of South Australia". The interest rate is the Treasurer's Approved Rate of Interest on Deposit Accounts, which is currently 5.43% as at 30 June 2006.
Receivables	15	Receivables are recorded at amounts due to the Trust. They are recorded when services have been completed.	Receivables are due within 30 days.
Investments	16	Investments are brought to account at cost. Interest is credited to revenue as it accrues.	Short term deposit. Interest income is received biannually.
<b>Financial Liabilities</b>			
Payables	18	Creditors are recorded at the agreed amounts at which the liabilities are to be settled. They are recorded when invoices are received.	Terms of payment are 30 days unless otherwise agreed in the terms and conditions of individual contracts.

**(b) Interest rate risk**

The effective weighted average interest rate risk is outlined below for the following financial assets and liabilities.

<b>Financial Instrument</b>	<b>Interest Rate %</b>	<b>2006</b>			<b>Interest Rate %</b>	<b>2005</b>		
		<b>Interest Bearing</b>	<b>Non-Interest Bearing</b>	<b>Total</b>		<b>Interest Bearing</b>	<b>Non-Interest Bearing</b>	<b>Total</b>
		<b>\$'000</b>	<b>\$'000</b>	<b>\$'000</b>		<b>\$'000</b>	<b>\$'000</b>	<b>\$'000</b>
<b>Financial Assets</b>								
Cash and cash equivalents	5.43	1 593	36	1 629	5.35	1 209	43	1 252
Receivables		-	48	48		-	21	21
Investments	5.30	390	-	390	5.50	343	-	343
		1 983	84	2 067		1 552	64	1 616
<b>Financial Liabilities</b>								
Payables		-	92	92		-	78	78
		-	92	92		-	78	78

## (c) Net Fair Values of Financial Assets and Liabilities

Financial Instrument	Note	2006	2005		
		Total Carrying Amount \$'000	Net Fair Value* \$'000	Total Carrying Amount \$'000	Net Fair Value* \$'000
<i>Financial Assets</i>					
Cash assets	24	1 629	1 629	1 252	1 252
Receivables	15	48	48	21	21
Investments	16	390	390	343	343
		<b>2067</b>	<b>2067</b>	<b>1 616</b>	<b>1 616</b>
<i>Financial Liabilities</i>					
Payables	18	92	92	78	78
		<b>92</b>	<b>92</b>	<b>78</b>	<b>78</b>

\*The net fair value is determined as the carrying value of all assets and liabilities.

## d) Credit Risk Exposure

The Trust's maximum exposure to credit risk at reporting date in relation to financial assets is the carrying amount of those assets as indicated on the Balance Sheet. The Trust has no significant exposures to any concentrations of credit risk.

## Note 22. Commitments

## Operating Lease Commitments

Commitments under non-cancellable operating leases at the reporting date and not recognised as liabilities in the financial report, are payable as follows:

	2006 \$'000	2005 \$'000
Not later than one year	166	101
Later than one year and not later than five years	503	370
Later than five years	161	212
<b>Total Operating Lease Commitments</b>	<b>830</b>	<b>683</b>

The operating lease commitments comprise:

- A non-cancellable photocopier lease, with rental payable monthly in arrears. No contingent rental provisions exist within the lease agreement and no option to renew the lease at the end of its term.
- The property leases are non-cancellable leases, with rental payable monthly in arrears. Contingent rental provisions within the lease agreements require the minimum lease payments to be increased annually based on CPI movement. Options exist to renew the leases at the end of the term of the leases.

## Capital Commitments

	Consolidated		HTSA	
	2006 \$'000	2005 \$'000	2006 \$'000	2005 \$'000
Capital expenditure contracted for at the reporting date is payable as follows:				
Not later than one year	-	86	-	86
<b>Total Capital Commitments</b>	<b>-</b>	<b>86</b>	<b>-</b>	<b>86</b>

These capital commitments are not recognised in the financial report as liabilities

## Note 23. Contingent Assets and Liabilities

There are no known contingent assets and liabilities as at 30 June 2006.

**Note 24. Cash Flow Reconciliation**

	2006	2005	2006	2005
	\$'000	\$'000	\$'000	\$'000

**Reconciliation of Cash and Cash Equivalents**

For the purposes of the Cash Flow Statement, cash includes cash on hand and at bank.

Cash as at the end of the financial year as shown in the Cash Flow Statement is reconciled to the items in the Balance Sheet as follows:

Deposits with Treasurer	1 593	1 209	1 593	1 209
Cash on hand	36	43	17	15
<b>Cash as recorded in the Balance Sheet</b>	<b>1 629</b>	<b>1 252</b>	<b>1 610</b>	<b>1 224</b>

**Reconciliation of Net Cash provided by Operating Activities to Net Cost of Providing Services**

Net cash provided by (used in) Operating Activities	400	535	409	528
Less Revenues from SA Government	(3 759)	(3 839)	(3 759)	(3 839)
<b>Add (Less) non cash items</b>				
Depreciation of Property, Plant and Equipment	(586)	(559)	(586)	(559)
Donations of Heritage Collections	264	258	264	258
Loss on Disposal of Assets	(247)	(151)	(247)	(151)
Correction of Prior Year error	-	(21)	-	(21)

**Changes in Assets and Liabilities**

Increase (Decrease) in Receivables	27	(103)	27	(103)
Increase (Decrease) in Inventories	(1)	(2)	(1)	(2)
Increase (Decrease) in Investments	47	46	-	-
Increase (Decrease) in Other Assets	(55)	-	(55)	-
(Increase) Decrease in Payables	(18)	43	(18)	43
(Increase) Decrease in Employee Benefits and Provisions	(57)	(62)	(57)	(62)
<b>Net Cost of Providing Services for Operating Activities</b>	<b>(3985)</b>	<b>(3 855)</b>	<b>(4023)</b>	<b>(3 908)</b>

**Note 25. Events after Balance Date**

There were no events occurring after balance date.

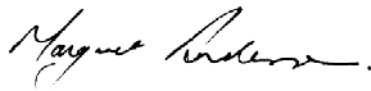
**Note 26. Controlled Entity**

The consolidated financial statements at 30 June 2006 include the following controlled entity:

Name of Controlled Entity	Place of Incorporation
The Migration Museum Foundation Incorporated	Australia

We certify:

- That the financial statements are in accordance with the accounts and records of the Trust and give an accurate indication of the financial transactions of the Trust for the year then ended;
- That the financial statements present fairly, in accordance with the Treasurer's Instructions promulgated under the provisions of the *Public Finance and Audit Act 1987*, applicable Accounting Standards and other mandatory professional reporting requirements in Australia, the financial position of the Trust as at the reporting date and the result of its operations and its cash flows for the year then ended; and
- That internal controls over financial reporting have been effective throughout the reporting period.



M Anderson  
Chief Executive  
HISTORY TRUST OF SOUTH AUSTRALIA



P Broderick  
Chairperson  
HISTORY TRUST BOARD