

SOUTH AUSTRALIA

---

TWENTY SECOND ANNUAL REPORT

OF THE

HISTORY TRUST  
of  
SOUTH AUSTRALIA

FOR THE

YEAR ENDED 30 JUNE 2002

**History Trust of South Australia**

59 King William Street  
Adelaide SA 5000

GPO Box 1836  
Adelaide SA 5001

DX 464 Adelaide

Telephone: +61 8 8226—8555

Facsimile: +61 8 8226—8559 (General)  
+61 8 8226—8580 (Executive)

Website: [www.history.sa.gov.au](http://www.history.sa.gov.au)

Email: [staff@history.sa.gov.au](mailto:staff@history.sa.gov.au)

## CONTENTS

BACKGROUND .....	1
ORGANISATIONAL CHART .....	2
CHAIRPERSON'S REPORT .....	3
CHIEF EXECUTIVE'S REPORT .....	4
MAJOR ACHIEVEMENTS 2001–2002 .....	12
ISSUES AND TRENDS .....	13
REVIEW OF OBJECTIVES 2001–2002 .....	14
MAJOR OBJECTIVES 2002–2003 .....	15
MARKETING .....	16
COMMUNITY HISTORY UNIT .....	23
MIGRATION MUSEUM .....	27
NATIONAL MOTOR MUSEUM .....	31
SOUTH AUSTRALIAN MARITIME MUSEUM .....	35
BUSINESS SERVICES .....	39
FINANCIAL STATEMENT FOR THE YEAR ENDED 30 JUNE 2002 .....	41
APPENDICES .....	52
1. BOARD OF TRUSTEES .....	53
2. MANAGEMENT PERSONNEL .....	53
3. STAFF AS AT 30 JUNE 2002 .....	54
4. ADVISORY COMMITTEES .....	55
5. HONORARY CONSULTANTS .....	55
6. MIGRATION MUSEUM FOUNDATION COMMITTEE MEMBERS .....	56
7. VOLUNTEERS .....	57
8. PERFORMANCE INDICATORS 2000–2001 .....	59
9. MUSEUMS ACCREDITATION AND GRANTS PROGRAM .....	60
a) Accredited museums at 30 June 2002 .....	60
b) Registered museums at 30 June 2002 .....	60
c) Allocation of grants .....	62
10. COMMUNITY HISTORY FUND .....	64
a) Publications .....	64
b) Projects .....	65
11. PUBLICATIONS .....	66
12. UNPUBLISHED CONFERENCE PAPERS .....	66
13. GRANTS OBTAINED .....	67
14. EXHIBITIONS AND EVENTS .....	68
a) Migration Museum .....	68
b) National Motor Museum .....	69
c) South Australian Maritime Museum .....	70
d) Community History Unit .....	70
15. ANALYSIS OF INVOICES PAID 2001–2002 .....	71
16. OCCUPATIONAL HEALTH, SAFETY AND INJURY MANAGEMENT .....	72
17. ENERGY EFFICIENCY ACTION PLAN REPORTS .....	73
18. AGE PROFILE .....	74
19. HUMAN RESOURCE DEVELOPMENT .....	74
20. <i>PUBLIC SECTOR MANAGEMENT ACT 1995</i> EMPLOYEES .....	75
21. SOUTH AUSTRALIAN GOVERNMENT SERVICES EMPLOYMENT AWARD (WEEKLY PAID) .....	77

## BACKGROUND

### Our Vision

*Our vision is to promote the value, understanding and enjoyment of history.*

### Our Mission

*Our mission is to encourage and work with the people of South Australia to:*

- *better understand our rich and distinctive history; and*
- *enhance our sense of identity and belonging by making history a living and exciting element in the life of the State.*

### Who We Are

The History Trust of South Australia is a statutory authority reporting to Parliament through the Minister for the Arts. It was established in 1981 under the *History Trust of South Australia Act (1981, 1995)* to encourage the research and public presentation of South Australian history and to safeguard South Australia's material heritage. The Trust's central administration is located in historic Edmund Wright House in King William Street, but its main public face is presented by three history museums – the Migration Museum, National Motor Museum and the South Australian Maritime Museum. The Trust also manages an important community history program to assist community museums and historical researchers. The History Trust's Board of eight trustees reports to the Minister for the Arts.

### What We Do

Under the *History Trust of South Australia Act (1981, 1995)* the Trust is responsible for the following:

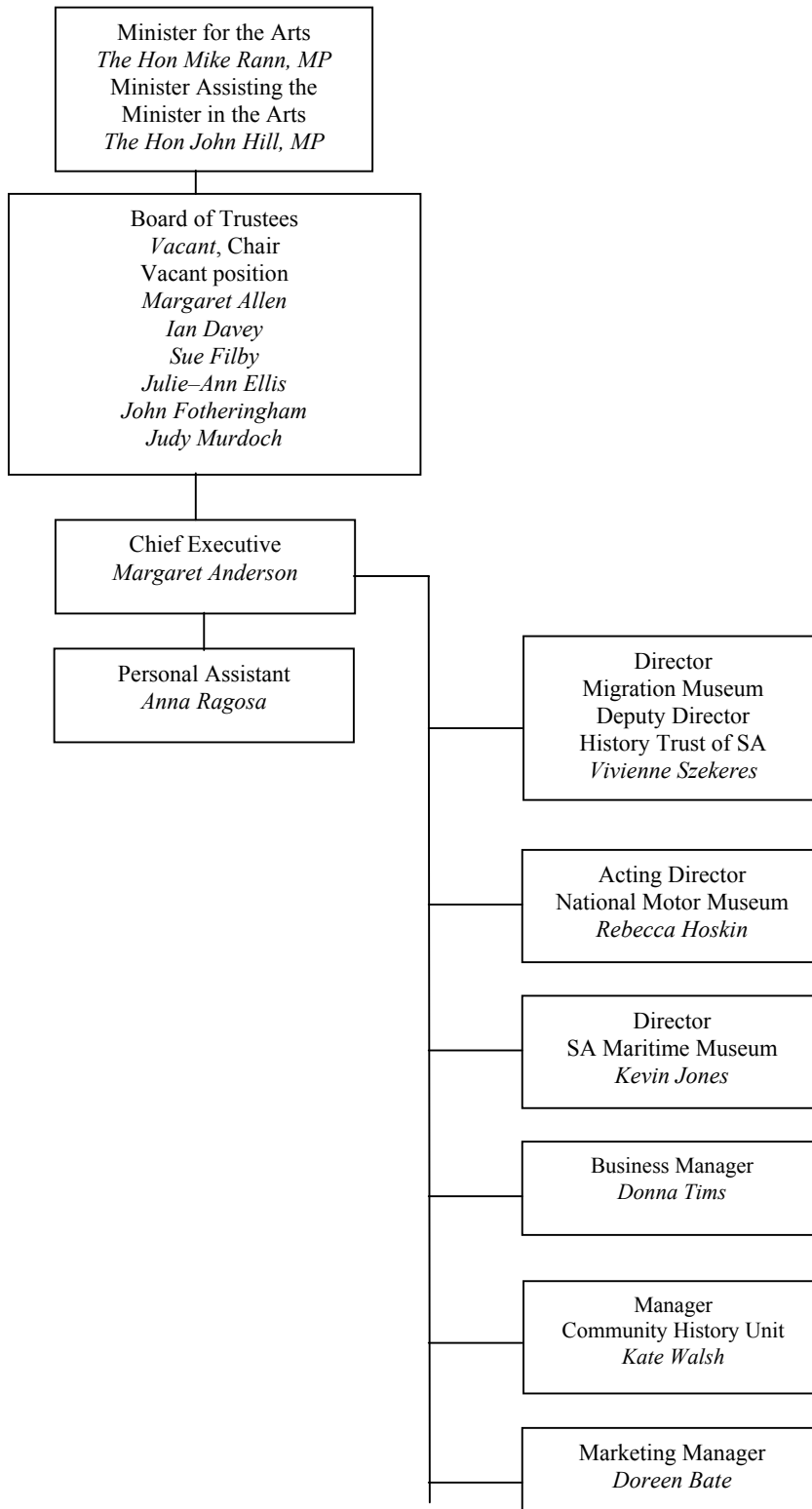
- researching and interpreting South Australia's history;
- presenting and exhibiting South Australia's material history;
- managing museums of its own and assisting the State's community museums;
- encouraging and assisting the work of South Australia's historical societies;
- providing policy advice to the Minister for the Arts on issues of relevance to South Australia's history and material culture.

These responsibilities are realised through the following programs:

- managing three museums which interpret aspects of South Australia's history:
  - the Migration Museum – which preserves and interprets the history of migration to and settlement in South Australia;
  - the National Motor Museum – which manages and interprets a collection representing Australia's motoring history;
  - the South Australian Maritime Museum – which preserves a collection of maritime heritage objects and interprets the maritime history of South Australia;
- providing advice and assistance to South Australia's 200 community history museums and 150 historical societies, as well as the many individuals who research South Australian history, through the Community History Unit. The Unit also administers two grants programs – the Museums Accreditation and Grants Program (for community museums) and the Community History Fund (for community history publications and programs);
- managing the State Historical Collection;
- promoting South Australian history and the activities of the History Trust's three museums.

## ORGANISATIONAL CHART

History Trust of South Australia as at 30 June 2002



## CHAIRPERSON'S REPORT

The Hon John Hill, MP  
*Minister Assisting the Premier in the Arts*

Dear Minister

I am pleased to present the 22nd Annual Report of the History Trust of South Australia for the year ended 30 June 2002.

In this tumultuous year, with its global crisis in tourism, the Board is particularly pleased to be able to record that the History Trust's three museums not only survived the crisis well, but also were able to increase their visitation levels. Once again over 300 000 people visited the Trust's sites during the year – a very satisfactory result. Even more pleasing was the response to the Trust's three travelling exhibitions, which toured regional South Australia and interstate as part of the Trust's contribution to two national celebrations – the Centenary of Federation and *Encounter 2002*. A further 154 000 visitors saw at least one of these exhibitions, extending the audience of our museums well beyond the vicinity of Adelaide.

Central to the Trust's success this year was undoubtedly the active program of exhibitions, events and other programs pursued by each museum. In an increasingly competitive leisure industry, ensuring an element of change in exhibition programs is essential, and the small staff of the History Trust is to be congratulated for their creative energy in maintaining such an extensive program, especially as it is entirely funded from project grants and corporate sector support.

Community history endeavour was equally active this year, with the successful completion of two extensive networking projects, involving some 23 community museums and historical societies, and the commencement of a third project. The ever-popular State History Conference, conducted at Adelaide University around the theme *History Goes Public*, continued to attract a lively audience of participants, while a strong program of regional field visits and training workshops responded to local requests for skill sharing *in situ*. The History Trust's two grants programs, the Museums Accreditation and Grants Program and the Community History Fund, continue to be keenly sought after by the local history industry and make a significant contribution to ensuring the protection and interpretation of the State's community heritage.

There have been some significant changes to the Board during the year, with the departure of former Chairperson Alec Khoo and Trustees Allanah Dopson and Marie Danvers, while Sue Filby was welcomed to the Board in December. Each of the departing Board members contributed significantly to the Trust and their support was much appreciated by both their fellow Board members and History Trust staff.

On behalf of the Board I would like to thank the staff of the History Trust and congratulate them on their achievements during the year. I hope you will agree with me, that the outcomes achieved by this small organisation belie its size. I would also like to thank you for your support of the History Trust since your appointment. Your enthusiasm for our broader aspirations has been very encouraging and is much appreciated.

The Board believes that an exciting future lies ahead for the History Trust. Your Government's commitment to social inclusion in Heritage and the Arts accords well with the Trust's long-established programs of community cultural engagement and we look forward to working with you to develop these even more strongly over the next few years.

IAN DAVEY  
 Acting Chairperson

## CHIEF EXECUTIVE'S REPORT

### A year of celebrations

This was an extraordinary year for history celebrations, with the Centenary of Federation succeeded in the New Year by *Encounter 2002* – the bicentenary of the meeting near Encounter Bay of the navigators Matthew Flinders and Nicolas Baudin. *Encounter 2002* struck a particular chord with many South Australians, as community commemorative events traced the path of those early sea voyages around the coastline. The History Trust's two travelling exhibitions, produced to coincide with these national programs, attracted an enthusiastic regional audience wherever they were shown and this additional audience helped the Trust to achieve a record attendance overall in this year. In fact despite the global tourism downturn in the wake of the tragic events of September 11, the Trust's three museums also managed a small increase in annual visitation, in addition to the new regional audience. Total attendance figures this year were 454 000 – a substantial achievement for this small organisation.

### Social inclusiveness and building social capital

Exhibitions continue to be the main public face of the History Trust and this year's program was extremely varied. Many of these programs involved the community directly: indeed a broad commitment to inclusiveness and community cultural development has characterised the Trust from its very beginning. Our overall vision for history and South Australia reflects a belief that an understanding of history is essential to a community's sense of itself and its place in the world, contributing significantly to community well being.

Once again maintaining an element of change was crucial, both to continue to attract the many South Australians who are repeat visitors to our sites and to entice others to visit. The year began strongly with the opening of a new gallery at the South Australian Maritime Museum – *Life's a Beach*, curated by Marie Boland. This exhibition celebrated South Australians' well-known love of the beach and explored some of the ways in which a visit to the beach has changed over the years. An interactive element allowed visitors to experiment safely with riding a surfboard without even getting wet! In December the Maritime Museum opened another new permanent display, *Action Stations!! The Navy and South Australia*, curated by Bill Seager and presented with the assistance of the Department of Veterans' Affairs and the Centenary of Federation Advisory Committee. *Action Stations* drew on the Museum's own substantial collection of paintings, models and naval memorabilia, enlivened and contextualised by the memories of former naval personnel, who were interviewed as part of the Museum's oral history program.

### The changing exhibitions program – Maritime themes

Travelling exhibitions have been a strong element in the Maritime Museum's program this year. The Museum's own exhibition *The Encounter: Flinders and Baudin*, produced with the generous assistance of Flinders Ports and the South Australian Tourism Commission, opened in Ceduna on 16 February, then moved in tandem with the tall ships as they retraced Flinders' route along the South Australian coast. Other divisions of the History Trust were called upon to assist in managing what was a punishing exhibition schedule, as the exhibition was shown successively in Port Lincoln, Whyalla, Port Augusta, Port Pirie, Port Victoria, Kingscote, Victor Harbor and Robe. Audiences were enthusiastic in each venue and the exhibition has been nominated for a national tourism award.

The Encounter theme continued at the Museum itself, with two national travelling exhibitions on show. *Matthew Flinders: the Ultimate Voyage* was opened by the Minister Assisting the Premier in the Arts, the Hon John Hill on 28 March. This display was toured by the State Library of New South Wales and included a wonderful selection of original Flinders material, including his hand-written logbook, his charts, artwork from the voyages and a number of personal objects. Visitors were enthralled by the opportunity to read Flinders' logbook first hand and to study his meticulously drawn charts. Such opportunities come rarely and the exhibition proved extremely popular, both with general visitors and with schools. It was made possible by the generous support of Flinders Ports.

### **Changing exhibitions at the Migration Museum**

Changing exhibitions were also a vital component of the Migration Museum's program this year. The discovery of an extraordinary collection of costume worn by three generations of an old South Australian family, presented the Museum with a wonderful opportunity for an exhibition in the temporary exhibitions gallery. Curator Christine Finnimore decided on the title *Public Moments Private Lives* for the display, which was presented with great assistance from the owners of the collection, Miss Margaret Davey and Mrs Jean Lang. The collection included several wonderful children's frocks, very rare finds, and a beautiful 1880s dress designed by the famous Parisian designer Charles Worth, amongst a wealth of other costume. The exhibition proved extremely popular and I am delighted to be able to report that the family has decided to donate the collection to the Museum.

In very different mode, the Migration Museum presented *Heart and Spirit: Conversations in a Creative Landscape* as part of the Adelaide Festival of Arts. The result of a creative partnership between curator Marie Boland and Indigenous artist Darryl Pfitzner Milika, *Heart and Spirit* explored experiences of race, class and identity in Port Adelaide Enfield through collected stories and sculpted pieces. The partnership with the Port Adelaide Enfield Council was particularly welcome.

The Migration Museum's travelling exhibition, presented as a contribution to the Centenary of Federation program in South Australia, continued to tour regional centres in this financial year. Intriguingly entitled *Federation Roadshow: A History, A Mystery, A Bird's Eye View*, the exhibition's touring program encompassed the length and breadth of regional South Australia. This year's venues included Kadina, Ceduna, Coober Pedy, Whyalla, Salisbury and Kangaroo Island. A quirky and engagingly critical exhibition, *Federation Roadshow* proved to be another popular exhibition for the Migration Museum and successfully extended the Museum's audience into regional South Australia.

One of the most popular and successful elements of the Migration Museum's annual display program is its schedule of exhibitions presented in the *Forum* community access gallery. Operating continually since 1986 the *Forum* has been the model for a succession of imitations interstate. This year's program was especially diverse, including displays presented by the Survivors of Torture and Trauma Rehabilitation Service, the Women's Auxiliary of the Church of Saints Constantine and Helen, the South Australian Transcultural Mental Health Network and the Pioneers' Association of South Australia. As a measure of its value to South Australian community groups, the Forum is fully booked as far ahead as 2005.

### **Migration Museum refurbishment**

It is now some 16 years since the Migration Museum opened and many of its first displays are still in place. This is far too long. The receipt of the second year of capital funding to refurbish the permanent galleries was therefore welcomed with relief. Significant progress was made in this project during the year. However, a further year of capital investment is required to complete the refurbishment and the History Trust is very anxious that budget reductions should not derail this long overdue project's completion.

### **The National Motor Museum**

*Monaro Mania* was the title of the first new exhibition presented in this year at the National Motor Museum. Coinciding with the launch of the CV6 and CV8 Monaro, some 33 years after the first model was released, the launch attracted wide media and motor enthusiast interest. The Monaro Club of South Australia participated in the launch of the exhibition, filling the Museum's forecourt with a range of models, all in mint condition, while two senior Holden past and present designers attended to share memories and reflect on intervening changes. *Monaro Mania* was presented with the kind assistance of Holden Ltd.

This year also saw the National Motor Museum send its first travelling exhibition on a national tour. *Two Wheeled Warriors: A History of Harley Davidson in Australia* was an immensely popular exhibition at the Motor Museum and has proved equally successful in its interstate venues. Beginning at Scienceworks in Melbourne on 16 October 2001, *Harley* moved to the Powerhouse Museum in Sydney on 26 March and is due to finish on 22 September 2002. In 2002-03 it will be shown in Newcastle Regional Museum and the Queensland Museum. Each showing has attracted wide media coverage, which has enhanced the national



profile of the Motor Museum significantly. Curator Julie Baird is to be congratulated on the great success of her exhibition. The Motor Museum was assisted in developing *Harley* by the generous support of Castalloy.

### National and international conferences

On a more serious note, the Motor Museum was host this year to the 7th World Forum of Motor Museums – the first time this international gathering of motor museum representatives had been held outside the United States or Europe. Despite the global crisis, delegates from eight nations attended the week-long conference, to discuss papers on a wide range of topics. The conference was judged a great success and the National Motor Museum has been invited to join the international council of the Forum.

The History Trust also played a significant role in presenting the annual conference of Museums Australia – the national professional association for museums. Held in March at the Adelaide Convention Centre, the conference attracted more than 350 registrants from all states of Australia, with a number of international guest speakers. Viv Szekeres ably chaired the conference organising committee and should be congratulated on presenting a stimulating, smooth-running conference.

### Events

Alongside its exhibition program the Motor Museum presents a regular schedule of popular events, both large and small, extending the Museum's audience beyond the range of traditional visitors. The two most popular events are clearly the biennial *Bay to Birdwood Run* (alternating in other years with the *Bay to Birdwood Classic*), in which owners and admirers of veteran and vintage cars make the run from West Beach to Birdwood; and the *Rock and Roll Rendezvous*, which features vehicles from the fifties and sixties, along with its characteristic music and dance. Both are hugely enjoyable events, attracting large audiences to the Museum and both are unique to South Australia. These are augmented throughout the year by smaller rallies and 'meets', as many car clubs seek to use the Museum's facilities to gather together.

This year also saw a new and highly successful event added to the Migration Museum's calendar. With the assistance of an Arts SA Audience Development Grant and funds from the Arts SA Health Promotions program, the Museum presented *Hands on Our World: Generations Expo*. *Generations Expo* drew on a wide reservoir of community expertise and support for the Museum to bring the generations together in a day of cross-cultural exchange. A range of community groups demonstrated traditional food preparation and art and craft techniques, while a continuous program of music and dance provided additional entertainment. A crowd of about 3 800 attended this first day, which was probably close to capacity for the Migration Museum's small courtyard. It was both immensely enjoyable and of great cultural interest to see the range of expertise generally 'hidden' in our community made available to a wider audience.

The Migration Museum also continued to offer its popular *Philosophers' Café* series. This concept is unique to the Migration Museum and reflects its commitment to exploring ideas of relevance to both past and present. Over a monthly meal in the Museum café participants listen to a prominent speaker on a topic of contemporary interest, followed by what tends to be very lively discussion sessions. Speakers in this year included Justice Michael Kirby of the High Court; comedian Hieu Van Le about his experiences as one of the very first boat people to arrive from Vietnam 30 years ago; and Lynn Arnold, World Vision of Australia, who posed many important questions in his sessions called *The damned from a coherent hell: illegals in the twenty first century west*. The series continues to be fully subscribed and is thoroughly enjoyed by all participants.

### Education programs

The Trust is fortunate to have the services of two education officers from Open Access College of the Department of Education, Training and Employment (DETE), attached to the Migration Museum and Maritime Museum respectively. They contribute an immensely valuable dimension to each museum's public programs. While the programs on offer explore a wide range of themes at both museums, there have been significant developments in several areas this year. Last year Rosa Garcia developed a CD-ROM and accompanying cultural awareness program charting the impact of European settlement on Indigenous South Australians. *Impact of Settlement* has been in constant demand from schools at all levels: in fact the Museum was unable to satisfy demand. However, increasingly the Museum has been approached to offer the program more widely, as cultural awareness training for a range of public sector agencies and other groups. Clients have included the Housing Trust of South Australia and the Royal District Nursing Service, expanding the Museum's program of life-long learning far beyond its walls.

Rosa has also begun in earnest the production of a new program exploring cultural traditions and food preservation methods. Entitled *Preserving Cultures* the program involves recording food production techniques on film and through oral history interviews, across cultures and through generations. It is beginning to reveal a fascinating history of cultural preservation through foodways in South Australia.

At the South Australian Maritime Museum a change of education officer saw the Museum bid reluctant farewell to Rob Morcom, while welcoming Liz Murphy. Since her arrival in February Liz has made significant progress on re-vamping the Museum's web presence through Open Access College.

### **Funding exhibitions**

These are just some of the major public programs presented in the Trust's three museums during the year. It is an impressive achievement for the small curatorial, exhibition and marketing team, made all the more impressive by the fact that the entire exhibition and events budget had to be found from either grants or sponsorships. It is a fact of life that contemporary museums must present changing exhibitions or lose visitors: producing regular exhibitions is now every museum's core business. Funding of exhibitions is also part of most museums' core funding, both nationally and internationally, and it is a matter of concern that this is not the case in South Australia. This year saw a fortunate conjunction for the Trust with access to additional funding sources through two national programs – the Centenary of Federation and *Encounter 2002* – but these will not be repeated. If it is to be sustainable into the future, the Trust must be able to access exhibition funding as part of its core funding agreement with Government. All museums now pursue corporate funding to augment their exhibition budgets, but it is a risky strategy indeed to be forced to rely upon it totally, especially in the limited sponsorship environment of South Australia. That said, the directors of all three museums and Marketing Manager Doreen Bate should be congratulated on their notable success in attracting exhibition sponsorships during the year. The Marketing Unit was also able to build on its limited marketing budget, achieving additional media sponsorship to the value of \$1.2 million during the year.

### **The State Historical Collection**

Managing the State Historical Collection is the Trust's less visible, but equally important, element of core responsibility under the History Trust of South Australia Act. It is fair to say that there was significant room for improvement in the area of collections management across the Trust, with some areas of exemplary practice, while other areas required significant collective effort. A shortage of curatorial staff and the continual pressure to curate changing exhibitions is probably the long-term cause of problems at both the National Motor Museum and the South Australian Maritime Museum, but significant issues were identified in a Trust-wide review of collections management completed by Kate Walsh in October last year. Areas of greatest concern were the non-vehicle collection and storage systems at the National Motor Museum and the organisation of items in storage at the South Australian Maritime Museum.

The departure of a number of staff who accepted ETVSPs during the year allowed some flexibility within the organisation to appoint new graduate curatorial staff at all three museums, with the intention of addressing these areas of need. In addition the Director of the Migration Museum, Viv Szekeres, agreed to oversee a program of improved collection management across the Trust, drawing on that Museum's acknowledged expertise. In a collaborative process across all divisions, she has negotiated a work program which has already seen marked improvement at the Motor Museum. A series of Trust-wide cooperative 'working bees' has assisted in addressing some of the more intractable problems, while also boosting staff morale. Artlab has been an active partner in this process and I wish to extend my thanks to Ian Cook, Helen Weidenhofer, Vicki Humphrey, Kristin Phillips and their staff for their support and assistance.

### **Community history services**

In addition to managing our own museums the History Trust provides advice and assistance to many community museums in the State. We also assist a wide range of historical societies and individual researchers. This year saw some reorganisation and consolidation of the division providing these services, following the departure of

long-serving Outreach Manager Geoff Speirs. Over the years Geoff contributed enormously to the development of South Australia's regional museum network and his wealth of knowledge and experience is sorely missed. He has however been ably replaced by Kate Walsh, formerly Senior Curator at the Migration Museum, in a newly constituted Community History Unit. The Community History Unit consolidates the provision of community services to both museums and historical researchers, while also assisting the Chief Executive to build the profile of South Australian history.

### **Collaborative community projects**

These last two years have seen a more than usually busy program of networking projects within the Community History Unit. Two projects begun last year, *Sharing Their Legacy*, a program assisted by the Department of Veterans' Affairs, and *SA Dry*, jointly funded by the History Trust and the Centenary of Federation Committee, came to fruition, with a succession of very successful exhibition openings across the State. *Sharing Their Legacy* encouraged local communities to explore their local wartime histories, while *SA Dry* reflected on the history of dry land farming in this driest of States. In all, 23 separate museums and historical societies were involved in these projects. *Sharing Their Legacy* proved so successful that the Department of Veterans' Affairs is seeking to promote it as a model to other states, although the absence of an equivalent of the History Trust elsewhere has made that task more difficult. A third networking project, the *Coastal Heritage Trail*, began in November 2001 as part of *Encounter 2002*. Again funded jointly, this time by the Regional Tourism Program through the South Australian Tourism Commission and the History Trust, some 14 museums along South Australia's coast are being assisted to present stories related to the State's maritime history. A wonderful diversity of themes and stories has emerged in the course of planning meetings, with the project due for completion in June 2003. Community History Project Officer Amanda James has managed these three networking projects with imagination and efficiency.

Networking projects such as these encapsulate the Community History Unit's new emphasis on forging strategic alliances in regional South Australia. Unit Manager Kate Walsh is focused in particular on strengthening relationships between the History Trust and both South Australian Tourism Commission and Local Government. The potential for regional museums and historical societies to contribute to regional development will be an ever-present element in her planning and field visits.

### **Grant programs**

One of the most important elements of the Community History Unit's work is the administration of its two grants programs, both intended to assist community history making. The Museums Accreditation and Grants Program allocates \$150,000 to community museums, while the Community History Fund has \$35,000 to assist historical researchers with publications or projects. In this year some 37 museums received grants from MAGP and 38 individuals and organisations were assisted from the Community History Fund, with recipients distributed widely across the State. A summary of all grants is included with this report at Appendices eight and nine. A strenuous effort was also made to finalise any outstanding grants from previous years. Over the next few years the Community History Unit will progressively review all of the State's registered and accredited museums to help identify areas for potential improvement. A questionnaire has also been distributed to assist in identifying the key needs of this sector, to assist in planning our service delivery strategies.

### **Regional Preservation Fund**

Within the structure of the Museums Accreditation and Grants Program the History Trust and Artlab Australia have collaborated in establishing a Regional Preservation Fund, to assist in the better preservation of regional cultural heritage. This initiative worked well in its inaugural year, with strong demand for grants from registered and accredited museums. The program is jointly managed with Artlab and ran extremely smoothly. Feedback from participating museums confirms that the initiative is timely and appreciated by our joint constituency.

## **The State History Conference**

Each year for the past decade or so the History Trust has held a State History Conference, bringing together those with an interest in South Australian history for an enjoyable and informative weekend of exchange and networking. This year's conference on the theme *History Goes Public*, was held at Adelaide University and was attended by close to 200 participants. The Department of Veterans' Affairs kindly supported one session of the conference, for a lively discussion of some of the research outcomes of the *Sharing Their Legacy* project. Since attendances continue to be steady and the response to papers animated, the Trust plans to continue these conferences annually for the foreseeable future. Next year's conference will be held in Renmark on the theme *History, Community and Environment*. Given the proximity to the River Murray, with its continually contested history for South Australians, the conference is expected to arouse a good deal of interest. Offers of papers are already being received.

## **Organisational review**

In common with many Arts organizations the History Trust faces considerable resource pressures. Funding during the 1990s did not keep pace with inflation, while significant reductions in the Trust's building maintenance budget in particular placed considerable, continuing pressure on the budget. The Trust occupies a number of significant heritage buildings, which now urgently require attention. At the same time government services were increasingly commercialised, with no compensating funding for those who were their consumers. Along with its buildings the Trust's public face has also deteriorated, with an ageing stock of permanent exhibitions: two of the museums have seen no significant government investment since the mid-1980s. In other words the Trust faced considerably increased demand on a shrinking budget.

In an attempt to identify any areas of potential saving within the organisation, the Trust engaged consultants from the Office of the Commissioner for Public Employment to conduct a review of overall management structures, along with administrative structures at the National Motor Museum and the (central) Directorate. Since a number of staff had sought ETVSPs as part of Government's plan to restructure an ageing public sector, the Trust was anxious to assess its capacity to continue operating with a somewhat reduced staffing complement. As part of their brief the consultants considered an option of centralising management of the three museums, but concluded that this was likely to undermine the on-going viability of the museums. They also assessed staffing levels at the two nominated divisions, concluding that, as they were presently constituted, the History Trust's staffing levels were 'extremely lean'. In fact their assessment of the Directorate staffing level was that it was rather 'too lean for efficiency'. The Trust is continuing to implement the recommendations of this review. The restructure attendant on the review and the ETVSP process has allowed the Trust to direct more resources to urgent collections management issues in particular and at the Migration Museum, to address a projected annual operating deficit.

## **Strategic planning**

On the completion of the organisational review the Trust embarked on a series of strategic planning sessions to assess progress against the existing business plan and negotiate a new plan for the period 2002–05. Site-specific planning sessions were followed by a corporate planning day on 25 May, with participation from all divisions and our principal partners in the Arts portfolio – Arts SA and Artlab. My thanks to Julia Szuster and Helen Weidenhofer for their contributions to the success of this planning day. A review of the existing business plan confirmed that almost all nominated outcomes had been achieved, although as usual in a few areas priorities had changed. The new business plans were completed by the end of June, with the exception of some financial detail, dependant on confirmation of the State Budget in July.

## **Conclusion**

I continue to be amazed and delighted by the creative achievements of this small organisation. Even a cursory survey of the activities summarised here – and I have included by no means all of them – confirms the extraordinary commitment and sheer determined energy that History Trust staff bring to their work. They have an abiding love of their craft and a passion for sharing it that shines in all the programs they manage. I wish to thank each and every one most sincerely for their continuing professionalism, their dedication and their commitment.

This has been a year of considerable change, with the departure of several long-serving staff members and I have greatly appreciated the support of the Management Team, as we worked through the process of organisational change. One of those who left at this time was Director of Administration and Finance, Lester Mackenzie, who had guided the administration of the Trust for the past decade. His accumulated knowledge of the public sector has been greatly missed. However, I wish to acknowledge the quiet achievements of Lester's replacement, Donna Tims, who has managed a reduced Business Services team for much of the year with admirable efficiency, patience and good humour.

The Board of the History Trust has been a source of continuing support throughout the year and I would like to thank outgoing Chair Alec Khoo and all Board members for their wisdom and encouragement. And finally I wish to record my appreciation of the continuing support and assistance of Kathie Massey, Executive Director Arts SA and those of her team who worked with us during the year, particularly Julia Szuster, Jeff Andary, Jeff Bettcher Elizabeth Neville, Carol Treloar, Carolyn Rankin and Cathy Wright; not forgetting our portfolio colleagues at Artlab – Ian Cook and his team.

Celebrations like the Centenary of Federation and *Encounter 2002* certainly highlight the continuing power of our history to capture the public imagination. Last year the History Trust identified as one of its strategic aims the establishment of a Museum of Adelaide, or a Museum of South Australian History, to ensure that the history of this State is both preserved and exhibited into the future. South Australia has a proud and distinctive history. It deserves to be better known. But more than that, such a museum has the capacity to contribute in a very real sense to community strength and confidence into the future.

MARGARET ANDERSON  
Chief Executive

**History Trust of South Australia**—59 King William Street, Adelaide 5000.

GPO Box 1836, Adelaide 5001

Tel: (08) 8226 8555 Fax: (08) 8226 8580

Website: [www.history.sa.gov.au](http://www.history.sa.gov.au)

Email: [staff@history.sa.gov.au](mailto:staff@history.sa.gov.au)

## MAJOR ACHIEVEMENTS 2001–2002

- A total of 454 105 visitors attended the History Trust's exhibitions this year – 300 444 to the three museums and 153 661 to our three travelling exhibitions. All three museums exceeded their visitor targets.
- A total of 25 exhibitions was presented in the Trust's three museums – 11 curated in-house, seven in-coming and seven community access displays.
- The Community History Unit successfully managed two major networking projects, involving 23 community museums and historical societies.
- A successful program of events at the National Motor Museum and Migration Museum attracted additional visitors to each museum.
- The South Australian Maritime Museum exceeded last year's record attendance for a single day, with more than 2 200 visitors on Anzac Day. Free admission was offered with the support of the RSL.
- Both the South Australian Maritime Museum and National Motor Museum have secured sponsorships of their exhibition programs for 2002–03.
- The National Motor Museum successfully hosted the 7<sup>th</sup> World Forum of Motor Museums.
- Travelling exhibitions from all three museums crossed the State from Ceduna to Coober Pedy, to Kangaroo Island. The *Harley* exhibition toured to Melbourne and Sydney.
- The Migration Museum's cultural awareness education program, *Impact of Settlement*, was offered by demand at many regional centres for a range of public sector and other clients.
- An additional \$1.2 million in bonus media exposure was negotiated by the Marketing team.
- An organisational review and restructure allowed some redistribution of resources to collections management.
- Another successful State History Conference was held over the last weekend in May.

## ISSUES AND TRENDS

- The level of public interest in history remains high, partly reflecting the impact of the Centenary of Federation and *Encounter 2002* celebrations.
- Comment in the media suggests that the concept of a Museum of Adelaide has wide appeal.
- Developments in Port Adelaide may present opportunities for the South Australian Maritime Museum.
- The History Trust's approach to all program areas means that it is well positioned to deliver on Government's social inclusion policies, although current entry fees at two museums are a barrier.
- The removal of entry fees from museums in the UK has seen attendances soar with more visitors from low-income families. Museums currently charging for entry in Australia are planning to follow suit.
- The absence of exhibition budgets from core funding appropriations is a significant impediment to producing quality exhibitions.
- Inadequate funding for building maintenance means that the History Trust is unable to maintain its built heritage assets appropriately.
- Regional development strategies present opportunities for community museums and historical societies.
- The National History Project reflects a growing belief that Australians need to understand their past better.
- Predicted cost rises in insurance premiums and electricity may increase pressure on the History Trust's budget.
- A Government investment in historical museums world-wide is increasing, reflecting a belief that knowledge of and pride in the past is an essential element in community confidence and understanding.



## REVIEW OF OBJECTIVES 2001–2002

In 2001–02 the History Trust planned to:

✓ = Achieved

- begin to implement the recommendations of the strategic management review; ✓
- review the organisation's five-year Corporate Plan; ✓
- continue to explore new audiences through targeted special programs; ✓
- complete stage II of the Migration Museum's redevelopment; ✓
- secure sponsorship support for the South Australian Maritime Museum's program of exhibitions; ✓
- secure a continuation of Holden's marketing sponsorship of the National Motor Museum; ✓
- present more of the Migration Museum's collection in object-based exhibitions; ✓
- present at least 12 new exhibitions; ✓
- increase the number of registered and accredited museums; ✓
- hold a State History Conference in collaboration with stakeholders; ✓
- hold at least two skills development workshops for community museums or historical societies; ✓
- secure at least one consultancy that results in the reorganisation or redevelopment of a significant historical collection; ✓
- continue to implement the Volunteer Workers' Policy across the organisation; ✓
- work collaboratively with Artlab Australia and others to develop joint programs; ✓
- contribute as an organisation to the following professional conferences – the 7th World Forum of Motor Museums and the 2002 Museums Australia Conference, both to be held in Adelaide; ✓
- work towards securing a Government commitment to developing a Museum of Adelaide/South Australian History. ✓

## MAJOR OBJECTIVES 2002–2003

The History Trust intends to:

- begin to implement the three year strategic plan (2002–05);
- present at least 13 new exhibitions;
- progress new education programs including *Preserving Cultures* at the Migration Museum;
- manage a collaborative display project with regional museums;
- manage a State History Conference in a regional location;
- produce three issues of *Community History* magazine;
- continue to implement the Occupational Health Safety & Welfare strategic plan;
- complete the next stage of the Migration Museum redevelopment;
- begin the three–year audit process of registered and accredited museums;
- complete the location audit of the South Australian Maritime Museum collection and continue to improve the management of the collection at the National Motor Museum;
- complete the first year of a three year interpretation program *Motoring Milestones* at the National Motor Museum;
- present the finish of the *Bay to Birdwood Run* and *Rock and Roll Rendezvous* at the National Motor Museum;
- present a fifth *Philosophers' Café* series at the Migration Museum;
- continue collaborative regional projects with Artlab and the South Australian Tourism Commission;
- continue to work towards achieving Government commitment to fund a Museum of Adelaide/South Australian History.

## MARKETING



HISTORY TRUST OF  
SOUTH AUSTRALIA

Edmund Wright House  
59 King William Street  
Adelaide S A 5000



South Australian  
Maritime Museum  
126 Lipson Street  
Port Adelaide  
Phone: (08) 8207 6255



National Motor Museum  
Shannon Street  
Birdwood  
Phone (08) 8568 5006

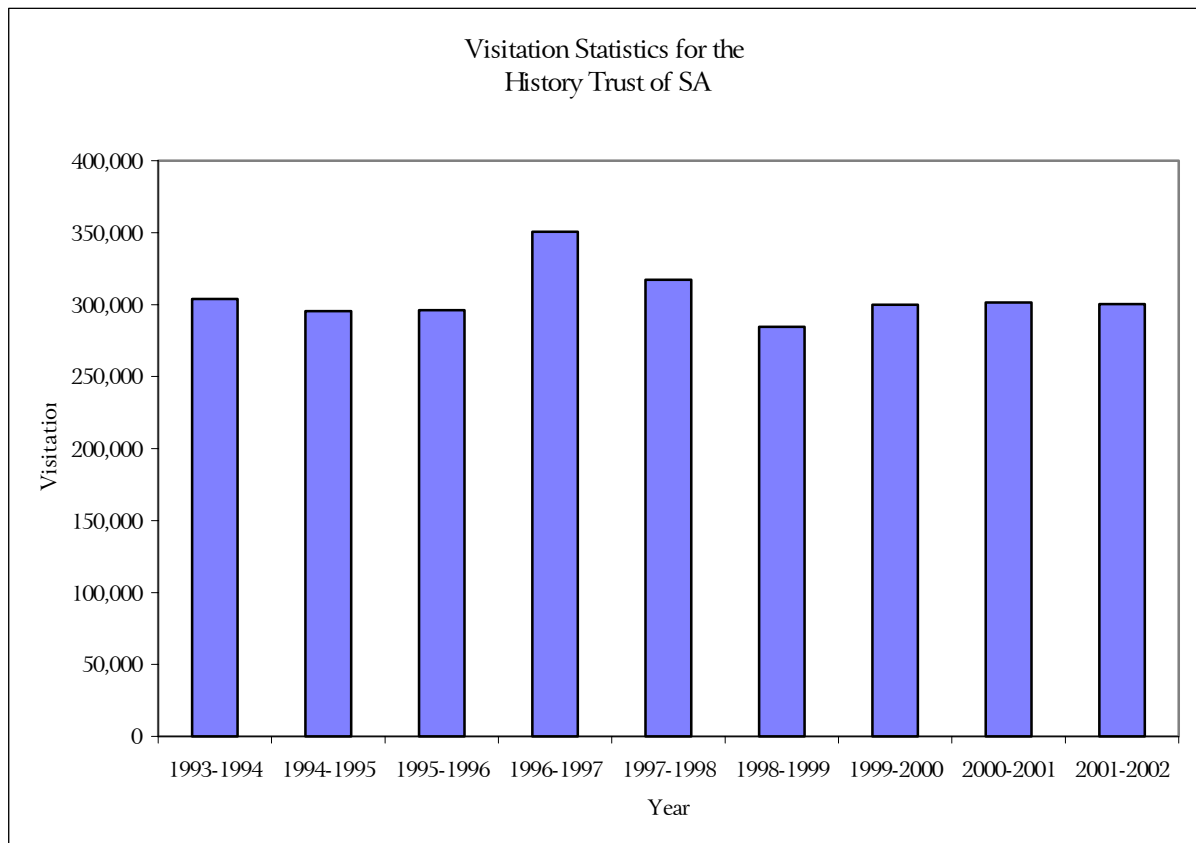


Migration Museum  
82 Kintore Avenue  
Adelaide  
Phone (08) 8207 7580

## MARKETING

*Visitor figures for the year were an excellent result especially considering the difficulties encountered by tourism generally. The aftermath of September 11 saw a 20 percent decline in international flights into Australia, while the subsequent global downturn in the aviation industry and the collapse of Ansett in Australia, meant fewer interstate and overseas visitors arriving in the State. Strong marketing strategies and a changing program of exhibitions and events kept audience levels at the three Trust museums on par with the last three years. These programs were made possible by corporate sponsorship.*

The Trust much appreciated the support of the media throughout the year in publicising all activities. \$1,216,933.84 worth of press, radio and television coverage, as well as bonus television and radio airtime, was achieved during the year.



## South Australian Maritime Museum

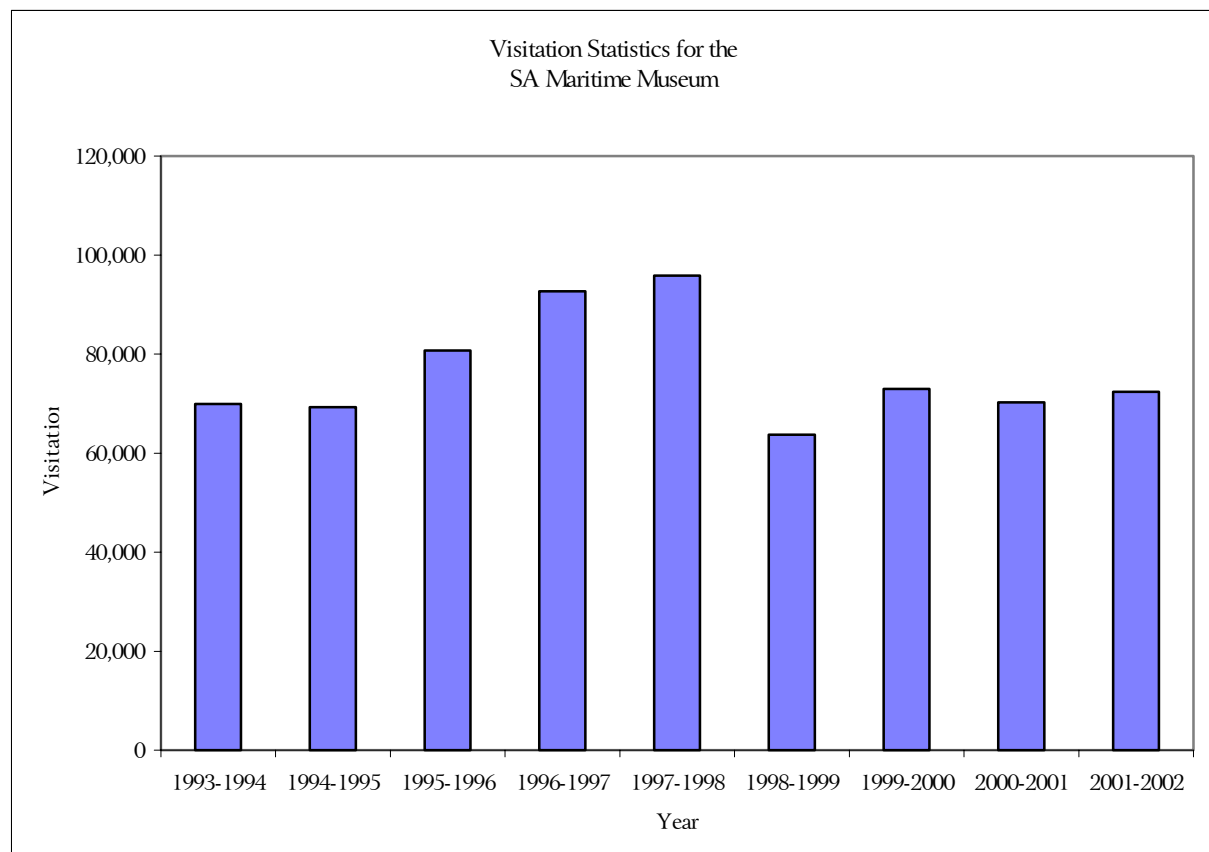
The financial year closed with visitor levels reaching 7 351 over the targeted 65 000, with school figures 3 899 above last year's figure. The year began with promotion of the new exhibition, *Life's a Beach. Sea Chest Secret*, on display from December to the end of January, was not quite as popular with families as had been anticipated. However, from its opening in March, *Matthew Flinders: the Ultimate Voyage* attracted a high numbers of visitors from schools. Promotion of the exhibition was boosted by the *Encounter 2002* celebrations, funded by Australian Major Events. Sponsorship funding from Flinders Ports assisted the Museum in bringing this exhibition to South Australia, along with a grant from the Port Adelaide Enfield Community Grants program.

Television commercials were produced for each exhibition and supported with airtime by Channel 9. Radio and press were also used in advertising campaigns, with creative support from advertising agency, Clemenger Adelaide.

On Anzac Day the Returned and Services League funded a free day in celebration of the new permanent exhibition, *Action Stations!! The Navy and South Australia*, with the Museum receiving 2 200 visitors – a new record. Promotion of the free day was given by Messenger Newspapers and radio Mix 102.3.

During the year Torrens Island Pty Ltd took on the sponsorship of the Museum's historic vessel, *Archie Badenoch*, which now bears the company's logo as it takes passengers on river cruises.

A number of additional promotional activities augmented the press campaigns. A new Museum promotional brochure was produced to reflect the change in the Museum's permanent exhibitions, while a *Voyage of Discovery* program, which provided an incentive to visit Port Adelaide museums, was implemented. This was funded by Arts SA's Audience Development Program and marketed by the Passenger Transport Board.



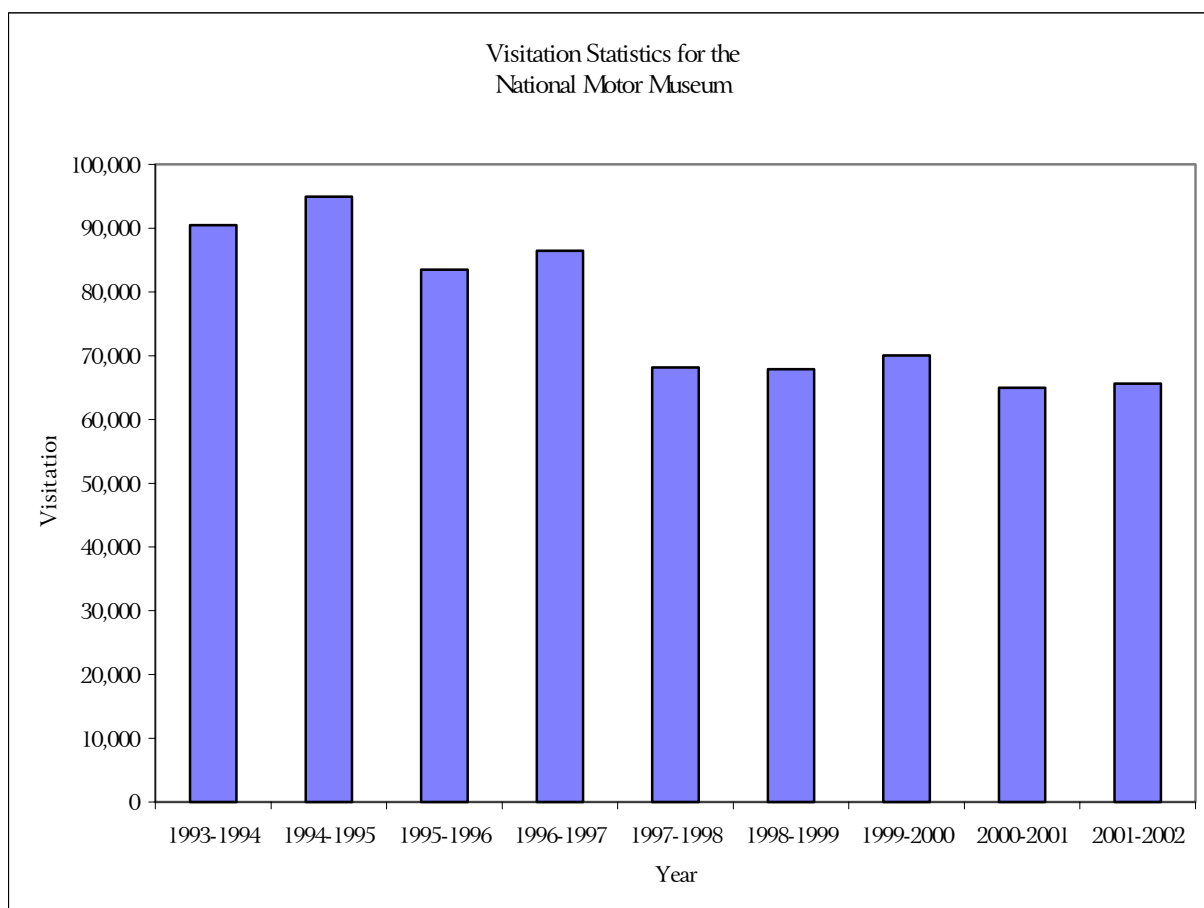


## National Motor Museum

The year's targeted figure of 65 000 visitors was exceeded, reaching 65 629. Core visitation (excluding events) was up by five per cent on last year's overall figure, including events, by one per cent.

Our marketing strategy of presenting a changing program of exhibitions to appeal to different audiences was implemented with the support of sponsors, Holden Ltd and Shannons Insurance. Sponsorship from Holden Ltd enabled us to produce the exhibition, *Monaro Mania* and to produce television, radio and press advertising campaigns. The exhibition, *Livin' in the Seventies* was produced with support from Shannons Insurance and presented in the Shannons Gallery. Both exhibitions were advertised through radio, press and television and received bonus airtime from NWS Channel 9 and Mix 102.3. Wide media coverage was obtained at the opening of *Monaro Mania* with Holden Monaro designers Leo Pruneau and Mike Simcoe popular subjects for the motoring press.

The Museum was grateful for the support of SGIC and the National Roads & Motorists' Association (NRMA) in presenting the *Rock and Roll Rendezvous*, which was a great success. 4 855 attended on the day – an increase of 546 people on last year's event. The Motor Accident Commission also continued with its funding of the *Risky Business Café* road safety interactive display.



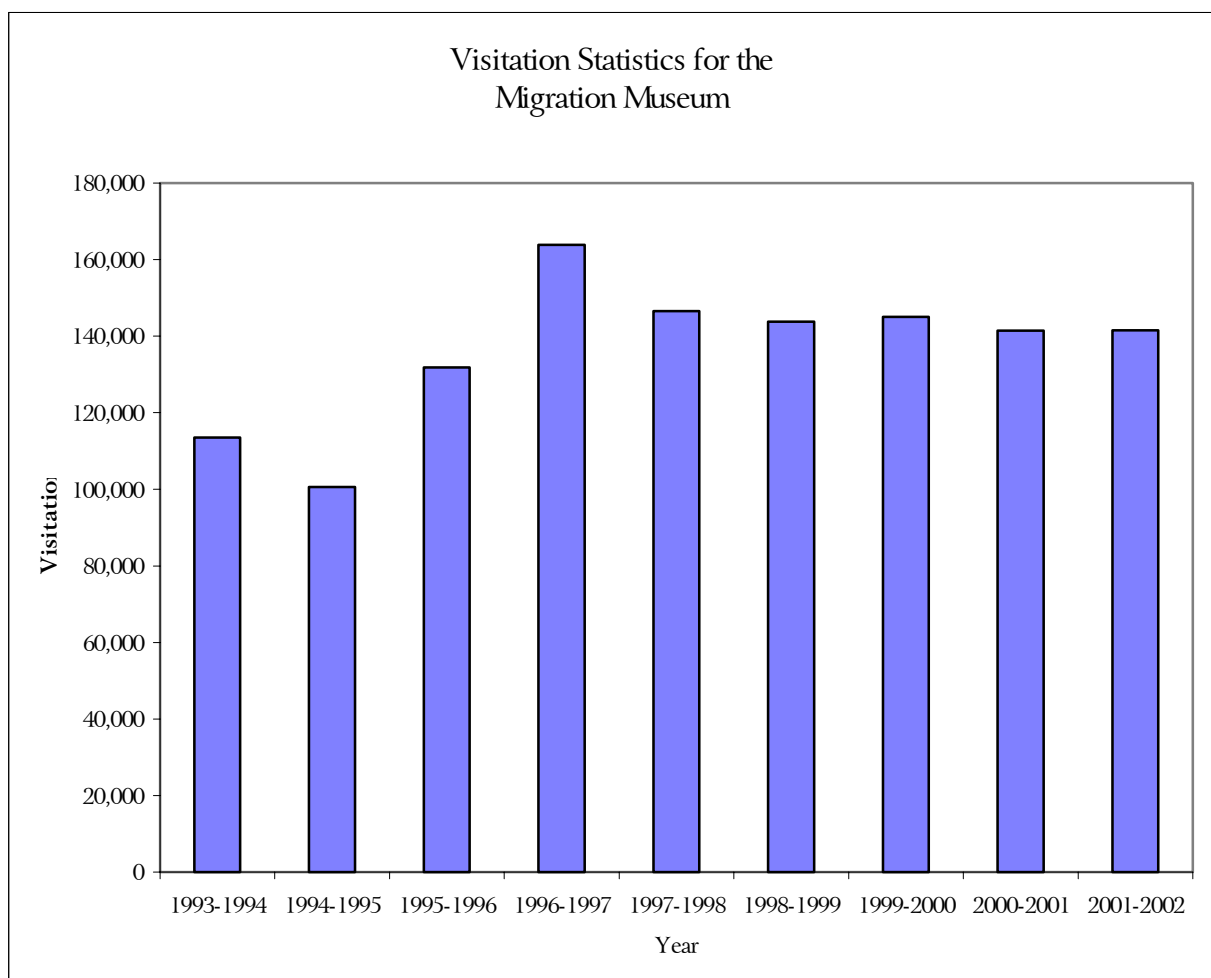
## Migration Museum

For the three months following September 11 the Museum saw a decline in its high overseas visitation figures. However, by January numbers were back to normal. Building works around the Museum during the year have also had a negative impact, but the final figure was very slightly higher than last year's – 141 557.

With a minimal marketing budget available to this museum, the main focus during the year was to generate free publicity about the Museum's changing exhibitions program. Opportunities for free editorial and publicity were identified and exploited. During the State tour of the *Federation Roadshow* exhibition, marketing staff kept regional media informed, generating much state-wide publicity. Our thanks to ABC Adelaide for media sponsorship of the exhibition.

This year's new event, *Generations Expo*, saw almost 4 000 visitors attend the Museum on the day and was widely promoted through stories in Messenger Press, as well as through a radio campaign on Mix 102.3.

The Commonwealth Bank's sponsorship of the *Forum* Community Access Gallery was acknowledged in media releases distributed to mark each exhibition opening, while Channel 9 continues to air the Settlement Square television commercial on community airtime, for which we are extremely grateful.





## Sponsors

The History Trust depends for the vitality of its programs on a range of corporate sponsors who contribute generously to our work. We could not continue without them. Our sincere thanks is extended to the following:

- 891 ABC Adelaide
- ABC Television
- Adelaide Colour
- Arts SA Audience Development Program
- Arts SA Health Promotions
- NWS Channel 9
- City of Port Adelaide Enfield
- Clemenger Adelaide
- Commonwealth Bank
- Commonwealth Department of Veterans' Affairs
- Flinders Ports
- Holden Ltd
- Hunters Engine Re-Conditioning
- Kockums Pacific Technologies (SAMB)
- Messenger Newspapers
- Mix 102.3 FM
- Motor Accident Commission
- Motor Traders Association
- PPG Industries Australia (Paints)
- RAA
- Returned and Services League
- Rock Lobster Industry
- Saab Systems
- SGIC/National Roads & Motorists' Association (NRMA)
- Shannons Insurance
- South Australian Part Supplies
- South Australian Tourism Commission
- TXU Torrens Island

DOREEN BATE  
Marketing Manager

**History Trust of South Australia**—59 King William Street, Adelaide 5000.

GPO Box 1836, Adelaide 5001

Tel: (08) 8226 8555 Fax: (08) 8226 8580

Website: [www.history.sa.gov.au](http://www.history.sa.gov.au)

Email: [staff@history.sa.gov.au](mailto:staff@history.sa.gov.au)

## COMMUNITY HISTORY UNIT

*The Community History Unit provides advice and assistance to South Australian historians, historical societies and community history museums. It produces a magazine for community historians, operates a specialist resource library and manages two grants programs - the Museums Accreditation and Grants Program and the Community History Fund. For over a decade the Unit has also held an annual State History Conference, alternating each year between a metropolitan and regional venue.*

*Community museums are at the most critical period of their history since the 1960s and 70s, when local volunteer groups established museums to save and preserve their communities' pioneer history and heritage. The Community History Unit's role is increasingly focused on assisting these museums to align themselves strategically with their local councils and tourism bodies, to assess the significance of their collections, to tell their local history well, to collect contemporary history and to retain and attract effective resources.*



*A small rural bank building. Early 20<sup>th</sup> century. Koppio Smithy National Trust Museum, Koppio, Eyre Peninsula.*

## COMMUNITY HISTORY UNIT

*During the year, the Community History Unit completed two networking history projects, Sharing Their Legacy and SA Dry and began a third, the Coastal Heritage Trail, all made possible with grants. It ran a successful State History Conference at the University of Adelaide and produced three issues of its magazine, Community History. It managed two grants programs, continued its long-standing advice and assistance program through the library and conducted numerous regional field trips and training workshops in response to requests from community historians and museums. The Unit also undertook a major consultancy on a significant Adelaide collection, the Performing Arts Collection.*

### Exhibitions and public programs

#### The State History Conference

The 2002 State History Conference, *History Goes Public*, was held at Union House, University of Adelaide on 25–26 May. Close to 200 people with an interest in South Australian history attended, with many commenting on the high standard of papers, facilities and food. A ‘call of interest’ was extended to regional history groups to host the 2003 State History Conference, with Renmark announced as the successful location at the conclusion of the Adelaide conference. This year’s conference attracted sponsorship from the Department of Veterans’ Affairs for a well-received special plenary session entitled *War and Memory*. The Department has expressed interest in continuing this relationship with the History Trust.

### Grants programs

#### Museums Accreditation and Grants Program

In this financial year 37 museums received grants from the \$150,000 Museums Accreditation and Grants Program fund. Among the grant recipients were the John Riddoch Interpretive Centre at Penola, the National Dry Land Farming Centre at Kadina and the Melrose Courthouse Museum, all of whom applied to develop major new local history displays. Fourteen maritime museums received grants to install their *Coastal Heritage Trail* displays. A number of other museums purchased hardware and software to computerise their collection catalogues.

Under the Regional Preservation Fund, a new joint initiative for 2001–02 between the Trust’s Museums Accreditation and Grants Program and Artlab Australia, six museums accessed Artlab expertise for conservation plans, conservation workshops and training or treatments on significant collection items. This new conservation fund has proved very successful and will continue to be a feature of Artlab’s and the Trust’s regional assistance programs.

Kingston National Trust Museum was the only museum added to the History Trust’s Museums Accreditation and Grants Program. However, Community History Unit staff worked with another six regional and one metropolitan museum interested in reaching registration status. These museums are at different stages of readiness for registration. Ayers House submitted an impressive application for accreditation and this will be recommended to the Board in August 2002. Community History Unit staff made 32 working visits to museums under the Museums Accreditation and Grants Program.

Efforts were made this financial year to follow up on outstanding unacquitted grants and a decision was made to make ineligible for future grants any registered museum which had not properly expended and acquitted previous grants.

In line with trends emerging across Australia for museums to forge closer links with their local councils and tourism groups, the Community History Unit has commenced this year to work strategically with South Australian local councils, the South Australian Tourism Commission and the Office of Regional Development, to ensure that museums and historical societies are seen as pivotal in the way that communities express their sense of place, history, identity and well-being. The Unit developed and distributed the first of an annual questionnaire for Museums Accreditation and Grants Program museums to track these emerging trends in South Australia and to determine key needs of the State's community history sector.

The Unit has also participated in a national discussion group, coordinated by Museums Australia National Office, on the future introduction of a national accreditation program for Australia's museum sector.

### **Community History Fund**

The Community History Fund continued to support publications that reflected new trends, or addressed gaps in our knowledge of South Australia's history and projects that enabled community groups to participate actively in the presentation and preservation of their history.

Grants amounted to \$40,000 this year due to a roll over of unclaimed grants from previous years. There were 82 applications for this highly sought after publications and projects grant fund, with 38 successful recipients. Some of the major grant recipients included the Kungari Aboriginal Association for the publication of a booklet on Indigenous perspectives on the history of the South-East, the City of Norwood, Payneham and St Peters for the production of interpretive walking guides, the Anglican Parish of Mitcham for a publication on 150 years of parish life and Dr Roger Cross for an environmental history of the Willochra Plain. Projects included oral histories and the preservation or digitisation of significant documents, photographs, registers, maps and objects for groups as diverse as the Burra Community Library, North Adelaide Football Club, Friends of the Wesleyan Cemetery, Anglican Parish of Mount Barker, Schizophrenia Fellowship of SA Inc, the Organ Historical Trust of Australia, Royal Geographical Society of South Australia Inc and the Torrens Rowing Club.

## **History in the community**

### **Community networking projects**

Coordinated by Community History Officer, Amanda James, networks of museums and historical societies across the State continued to produce their local contribution to the history projects, *Sharing Their Legacy* and *SA Dry*, with all of the participants succeeding in completing their displays by early 2002.

A third networking project, the *Coastal Heritage Trail*, commenced in November 2001 as part of *Encounter 2002*, with a completion date set for June 2003. With funding from the Regional Tourism Program, through the South Australian Tourism Commission, the Community History Officer assisted 14 museums along South Australia's coast to present stories relating to their part in the State's maritime history. As with the previous two networking projects, there is a striking depth and diversity to the stories being researched and presented. Streaky Bay National Trust is highlighting its local shark-fishing industry. In May Axel Stenross Maritime Museum in Port Lincoln opened its display, *The Scandinavian Connection*, on the Scandinavian seamen who lived and worked in the district from the turn of the twentieth century. The museums on Yorke Peninsula have focused on their part in the inter-continental grain trade, a prominent feature of South Australia's rural and maritime industries in the nineteenth and twentieth centuries. Port Pirie National Trust will highlight the contribution of Italian immigrants to the development of the local fishing industry. Victor Harbor has taken the opportunity to redevelop its Flinders-Baudin story and Signal Point Interpretive Centre at Goolwa is concentrating on Goolwa's history as a port connecting the River Murray wool and grain trade to overseas markets. Millicent National Trust Museum opened a fascinating display on the story of local residents who looted the cargo from the shipwrecked *Geltwood* in 1876 and Port MacDonnell Maritime Museum will feature the story of a local shipwright. These networking projects have strengthened the History Trust's links with regional museums and historical societies and have encouraged our partners to enhance their skills in the research and presentation of their own and South Australia's history.

### **Provide advice and assistance**

One of the Community History Unit's main functions is to provide advice and assistance to community historians, historical societies and museums. Throughout this financial year the Information Resources Manager and Research Officer handled numerous, diverse and sometimes extensive, research enquiries from authors, academic historians, government and community organisations. The Information Resources Manager continued to acquire books and journals for the Library on South Australian history and museum management. The highly significant photographic collection, the Glass Negatives Collection and the Sands and McDougall Directories, were popular sources of information for researchers and members of the public.

Community History Unit staff assisted the South Australian Maritime Museum to tour its *Encounter 2002* history exhibition, *Encounter: Flinders and Baudin*, to three regional venues, Port Lincoln, Port Pirie and Robe, as part of the Unit's field work schedule. The February issue of the *Community History* magazine had a maritime history theme to mark *Encounter 2002*.

### **Resource Management**

In October 2001 Museum Services Manager, Geoff Speirs, left the History Trust after 20 years of service to South Australia's community museums and historical societies. Kate Walsh, Senior Curator, at the Migration Museum was appointed to take over Geoff's role in the restructured Community History Unit. Two positions for the Unit were advertised in May 2002, with Amanda James appointed to the ongoing position of Community History Officer. The Research Officer's position will be filled in July 2002.

With a reduction in the Community History Unit's Health Promotions Grant from Arts SA from \$10,000 to \$5,000, it was reluctantly decided this year to reduce the number of issues of the Community History magazine from four to three per year.

### **Conclusion**

The merging of Outreach Services into the new Community History Unit, new initiatives and partnerships and the successful model developed for networking projects, have formed a solid basis on which to set future strategies that will address the ongoing needs of South Australia's regional and metropolitan community history movement.

KATE WALSH  
Community History Unit Manager

**History Trust of South Australia**—59 King William Street, Adelaide 5000,  
GPO Box 1836, Adelaide 5001  
Tel: (08) 8226 8555 Fax: (08) 8226 8559  
Website: [www.history.sa.gov.au](http://www.history.sa.gov.au)  
Email: [staff@history.sa.gov.au](mailto:staff@history.sa.gov.au)

## MIGRATION MUSEUM

*The Migration Museum was the first museum of immigration history to open in Australia.*

*Since 1986 it has been documenting, collecting and presenting the stories of immigrants and refugees who have settled in Australia and the impact that immigration has had on Indigenous peoples.*



*Wedding frock of silk satin, probably designed by Charles Worth of Paris, worn by Sarah Shannon of 'Yatara' when she married Arnold Davey in 1893. Displayed in the exhibition 'Public Moments Private Lives, Costume from the Davey Family and donated to the Migration Museum by Miss Margaret Davey and Mrs Jean Lang.*

## MIGRATION MUSEUM

*This year the Museum was pleased to reach new regional and local audiences, firstly by the continuing tour of The Federation Roadshow: A History, A Mystery, A Bird's Eye View, which reached audiences as far apart as Ceduna and Kangaroo Island; secondly through the changing exhibitions program which was successful in attracting new visitors from descendants of Adelaide's pioneering and early settler families. The Museum also strengthened its position as a provider of Cultural Awareness Training to school students and to service agencies.*

### Exhibitions and public programs

*The Federation Roadshow: A History, A Mystery, A Bird's Eye View*, which was one of the Museum's Centenary of Federation projects, continued to attract good audiences as it travelled around South Australia to Kadina, Ceduna, Coober Pedy, Whyalla, Salisbury and Kangaroo Island.

A new audience of around 3 800 visitors was attracted to a one-day event called *Hands on Our World: Generations Expo*. This was a cross-cultural exchange of skills designed to appeal to a wide age range. Supported by an Arts SA Audience Development grant and funds from Health Promotions, the Museum mounted a successful marketing campaign to promote the event and was rewarded with a busy crowd all day.

Every month *Philosophers' Café* continued to challenge and delight its audience and bring new people to the Museum. Over a meal in the Chapel Café, local and interstate speakers were invited to present their views on a contemporary issue, followed by lively discussion from the floor.

In exploring the cultural diversity of our community, the Museum continued to pursue a vigorous changing exhibitions program, in order to present the many facets of cultural identity such as ethnicity, race, gender, sexuality, age and class differences.

The discovery of three generations of costume held in beautiful condition by a South Australian family prompted the Museum to develop a social history exhibition called *Public Moments Private Lives*. The exhibition, which included an 1880s wedding dress designed by the Paris designer Charles Worth, was about the lives of four Adelaide women and certainly appealed to our female visitors.

The Museum also assisted in the production of an exhibition which touched on race, class and identity, *Heart and Spirit: Conversations in a Creative Landscape*, by Indigenous artist Darryl Pfitzner Milika and curator Marie Boland. Included in the 2002 Adelaide Festival of Arts this contemporary art exhibition combined the collected stories of Port Adelaide Enfield people who felt they were 'outsiders', with exquisite sculptural pieces expressing the artist's response to alienation and racism. The Museum was delighted to involve the Port Adelaide Enfield Council as a partner in this project.

The Museum also mounted an exhibition from the Jewish Museum in Sydney entitled *The Holocaust: Learning from Humanity's Greatest Tragedy*. This was in stark contrast to an exhibition called *Flying Colours* – a 'Feast' event for Adelaide's Gay and Lesbian Festival.

### Education programs

The Museum's education program has developed into a significant asset. Under the direction of Education Officer Rosa Garcia, the Museum presented programs which countered racism and developed cultural understanding, as well as celebrating cultural difference and similarity in the South Australian community. There was a significant increase in the demand for cultural awareness training programs from teachers, and from the Housing Trust and the Royal District Nursing Service who became new clients for Cultural Awareness Training.

### History in the community

Museum curator Christine Finnimore continued to work closely with a number of community groups, assisting them in the presentation of their histories. This resulted in four new displays being mounted during the year in the Commonwealth Bank's Community Access Gallery, the *Forum*. In chronological order these exhibitions were: *The Heart of Acceptance: Cultural Healing Uncovered*, by the SA Transcultural Mental Health Network; *Survivors of Torture and Trauma – The Past Decade in Adelaide* by STTARS (Survivors of Torture and Trauma Assistance and Rehabilitation Service); *Faith, Hope and Goodwill: The Contribution of the Women's Auxiliary of the Church of Saints Constantine and Helen* and *In the Wake of Flinders and Baudin: The First Ten Years 1836–1845* from the Pioneers' Association of South Australia.

The Education Officer and Guides also worked closely with a number of different communities, including Vietnamese, Italian, Greek and Indian groups in developing new education programs. Museum staff, including the Curator, Education Officer, Guides and Director were in constant demand to talk about immigration history and the role of the Museum in presenting social history to community groups.

### Collections management

Margaret Davey and Jean Lang, whose costume was displayed in *Public Moments Private Lives*, donated all the costume and most of the family memorabilia to the Museum. Such donations of costume, extending across three generations in a single family, are a rare occurrence for Australian museums. In addition to the Davey donation, the Museum received a further 28 donations of costume, documents, handcrafts, household objects and historical weapons.

Behind the scenes a group of dedicated volunteers assisted the Museum in its work to manage and maintain the collection of artefacts and copy photographs. The Museum's collection has been publicly acknowledged as one of the best managed in the State. 217 objects have been accessioned by volunteers during the year.

The Museum has lent objects to the Embroiderers' Guild, the National Library of Australia, the Wakefield Regional Council, the Greek Orthodox Community of Renmark, the Port Adelaide Community Arts Centre, the Port Pirie Tourism and Arts Centre, the Historic 1830s Royal Marines Drill Team, the Masonic Centre and Fort Glanville.

### Resource management

This year the Museum succeeded in attracting a number of grants and sponsorships, crucial for the continuation of our exhibitions program. Of great significance was the Museum's receipt of a capital grant of \$200,000 as the second phase of a re-development of two of the four permanent exhibition galleries. Historical research and design work has been completed. The project also included the installation of a new wrought iron gate which makes the Museum more visible and welcoming from Kintore Avenue.

A sponsorship of \$15,000 was received from the Commonwealth Bank to support the Community Access Gallery, *The Forum*.

A grant of \$5,000 was also received from Arts SA Leadership Artists' Development Program for Indigenous artist Darryl Pfitzner Milika to develop an installation which interprets Indigenous history in the context of colonisation.

Other grants from Arts SA enabled the Museum to mount the *Generations Expo* event. The first was a grant of \$20,000 from the Audience Development Program and the second was \$4,000 from Health Promotions.

Due to new construction work at the South Australian Museum, the History Trust Workshop was closed in the basement of the Natural Sciences Wing. Since 1986 the workshop had produced 13 major displays and dozens of smaller ones. Walter Casha who worked as an artisan in the workshop left the Museum after 12 years of excellent service. A new facility in Artlab's building was organised as a workshop, which will be shared between the Migration Museum and the South Australian Museum.



Mick Birch and Mark Gale who were re-deployees from TransAdelaide came to work and learned new skills. Both were already highly skilled and had good attitudes to work. Mick Birch worked until January 2002 and Mark Gale worked from February until late May 2002. They each made a significant contribution to the work of the Museum, before finding permanent employment elsewhere.

Kate Walsh, who had been a curator since 1987, took up the position as Manager of the Community History Unit at the Directorate of the History Trust in October 2001. Kate's contribution to the work of the Museum through exhibitions and the publication *The Changing Face of Australia* will be enjoyed for many years. Her work in collections management was particularly appreciated.

After 15 years of managing the shop and coordinating guide staff Senior Guide Perla Brittle decided to retire this year. Perla's loyalty, enthusiasm and ideas for projects were boundless. The Museum was very pleased to welcome Catherine Manning as a curator.

The Museum hosted placement students Kate Andrew and Samantha Lewis and Workskills placement Wayne Turvy.

## Conclusion

The Museum presented a dynamic public face through its program of changing exhibitions and education programs and continued to attract new visitors as well as repeat visitors. Over the years the Museum has become a place to find not only the history of immigrants and refugees, but also perspectives on such contemporary issues as Reconciliation, multiculturalism and ideas about identity. It has also become a place to remember and commemorate the past and to celebrate cultural diversity.

VIV SZEKERES  
Director

**Migration Museum**—82 Kintore Avenue, Adelaide.

Tel: (08) 8207 7570 Fax: (08) 8207 7591

Website: [www.history.sa.gov.au](http://www.history.sa.gov.au)

Email: [migration@history.sa.gov.au](mailto:migration@history.sa.gov.au)

Admission by donation

## Guided Programs

1:00hr \$3.00

1:50hrs \$4.50

2:00hrs \$6.00

\$20.00 for disadvantaged schools from DETE, ESL, Special Education classes.

## Opening Hours

10:00am–5:00pm Monday to Friday

1:00pm–5:00pm Weekends and Public Holidays

Closed Christmas Day and Good Friday.

## NATIONAL MOTOR MUSEUM

*The National Motor Museum's reputation as the centre for Australian motoring history continues to grow – a long way from its beginnings as a small private motorcycle museum in a disused flour mill in 1965. Its acquisition by the State Government in 1976 and subsequent incorporation into the newly formed History Trust of South Australia in 1982, laid the foundation for the development of a museum of international standing and a major South Australian tourism attraction.*

*The Museum today displays over three hundred vehicles in two pavilions. It aims to present the history of the motor vehicle in Australia and the way it changed Australian society.*



*Visitors to the National Motor Museum enjoying the temporary exhibition 'Livin' in the Seventies'.*

## NATIONAL MOTOR MUSEUM

*This year saw a particularly varied program at the National Motor Museum. Despite a general decline in tourist numbers to the State, the Museum managed to exceed its target figure, attracting 65 629 visitors overall. In the circumstances this was a considerable achievement. In recent years the Museum has increased its presentation of changing exhibitions to provide our regular visitors with an incentive to visit again, and this year saw the presentation of Monaro Mania, curated by Julie Baird and produced with the generous assistance of Holden Ltd. The Museum's popular touring exhibition, Two Wheeled Warriors: A History of Harley Davidson in Australia, also began a successful tour of major interstate museums. During the year the Museum hosted the 7th World Forum of Motor Museums, the first time this august body has met outside Britain or the United States, and continued to present its popular program of major events – the Bay to Birdwood Classic and the Rock and Roll Rendezvous.*

### Exhibitions and public programs

Maintaining its public face is every museum's priority and the National Motor Museum is no exception. While the permanent collection remains the primary attraction for many at the Museum, a growing group of enthusiasts eagerly await new exhibitions each year. The opening of *Monaro Mania* provided a unique opportunity for the many devoted followers of this popular brand of vehicle to both inspect those on display and, if they were proud owners of Monaros, to display their own vehicles in the museum forecourt for others to admire. Many took the opportunity to do just that through the Monaro Club, proudly explaining the features of their prized possessions to envious onlookers. The exhibition coincided with the launch of two new Monaro models, the CV6 and CV8 and both past and present designers were on hand to speak at the opening. Leo Pruneau, designer for Holden from 1969-84, was in particular demand both with enthusiasts and with the media.

### Touring exhibitions

For the first time this year the National Motor Museum was able to tour one of its temporary exhibitions to other museums interstate. *Two Wheeled Warriors: The History of Harley Davidson in Australia* had proved to be an immensely popular exhibition while in the Museum and its reception interstate has been equally enthusiastic. It was shown at Scienceworks, part of Museum Victoria, from October to March, before moving to the Powerhouse in Sydney. Some 136 000 additional visitors attended *Harley* interstate, greatly enhancing the Museum's national profile.

### Volunteer program

The Museum is immensely lucky in its band of devoted volunteers, who attend the Museum regularly to assist in maintaining the vehicle collection, but also to assist in many other areas. A special project undertaken by the volunteers this year saw them complete a replica of the first garage to open in Birdwood in the 1920s. Maerschel's Garage reflected the classic evolution of a local blacksmith's shop into a garage and provides a fascinating glimpse into past mechanical methods. It opened in October and was produced with the assistance of a grant from the Adelaide Hills Council.

### Education programs

Although the Motor Museum is not lucky enough to have an education officer attached to its staff, a concerted effort was made this year to expand the education program offered to schools. An education package for older students and rural or isolated students was developed, based on the exhibition *Driving Force*, which examines the social impact of the car on Australian life.

## Events

In recent years the Motor Museum has managed two very successful events – the finish to the *Bay to Birdwood Run* (alternating in other years with the *Bay to Birdwood Classic*) and the 1950s extravaganza, the *Rock and Roll Rendezvous*.

This year the *Bay to Birdwood Classic* was held on 30 September. It attracted 1 571 vehicle entries and 6 490 visitors to the Museum. As usual, judging in the various categories was keenly contested, with the prize for the *Classic* awarded to Graham Juttner for his 1962 MK II Jaguar.

The *Rock and Roll Rendezvous* is a most enjoyable event, combining vehicles of the 1950s and 60s with rock and roll music and dancing. It is deservedly popular and brings a very different audience into the Museum each year. This year's event was held on 10 March and attracted 274 vehicle entries and 3 759 people. The Museum rocked away from 9:00am in the morning until after 5:00pm that night, with no discernible flagging amongst the dancers!

## History in the community

Each year the Museum meets requests from many organisations and individuals for information about motoring history. These include motoring clubs, other museums and historical societies. A new process for streamlining the provision of information was introduced this year and has worked well.

Another development welcomed by the Museum was the creation of an Australasian Automotive Museums Association. Curator Julie Baird attended the inaugural meeting of this group in Geelong and predicts that it will contribute usefully to the exchange of information between such museums in the future. There is also a move to standardise policies and procedures across the sector and to develop a national collections register, which should prove to be of value to all participants. Julie Baird was appointed a member of the three-person steering committee to guide the development of this new association.

## Collections management

As part of the History Trust's Corporate Collections Management Strategy this year the Deputy Director, Viv Szekeres, worked with Museum Curator Julie Baird to develop a five-year strategy for the Motor Museum. Important goals were the improvement of collection storage areas and collection record standards. An important beginning was made with a Trustwide collective effort over two days in the Mill building. In the interests of raising general understanding of collections management issues amongst all staff at the Museum, training in this area was also provided to all staff and volunteers, allowing them to become better interpreters of the collection to visitors.

A number of significant items was added to the collection during the year. Of special note was a 1900 De Dion Bouton, donated through the Cultural Gifts Scheme by a Victorian collector and a 1968 Aston Martin DBS 6, acquired through a bequest. Both add significantly to the Museum's core collection of vehicles. Two important vehicles were also lent to relevant community events. The Shearer steam carriage participated in a heritage event in September in Mannum, its place of origin, while a Douglas Speedway motorcycle, originally raced by Fay Taylor, a pioneer female racer, was displayed at an historic speedway meet at Mallala Racecourse in February.

## Resource management

The Office of the Commissioner for Public Employment completed an organisation review. The report reviewed the responsibilities, duties and outputs of Museum staff and made recommendations to undertake a further review of workshop activities, functions and procedures. In addition, it suggested a restructure of responsibilities within the Administration and Front-of-House areas to achieve efficiencies and improved services. The Museum will implement the recommendations as funds permit over time.

The Mill Building was partially closed to the public, following the identification of a number of occupational health and safety issues. A building audit, commenced in March 2002 with consultant architects Woodhead International leading the project, will clarify the work needed to address these issues, along with other building maintenance and conservation issues. The report is expected in mid-August 2002.

### **Human resources**

On 12 October 2001 the Museum farewelled a number of key staff who accepted Enhanced Targeted Voluntary Separation Packages. Those leaving included Jon Chittleborough, who first joined the Museum 17 years before as a curator. Jon's long contribution to the Museum and his outstanding knowledge of Australian motoring history will be sadly missed, although he has generously agreed to continue as an expert advisor. Rebecca Hoskin was seconded from Arts SA as Acting Director from October 2001. A number of newcomers also joined the staff during the year. In January 2002 Ms Pauline Renner joined the Museum as Events Co-ordinator, while new curator Matthew Lombard was appointed under the graduate employment scheme in April 2002. Two part time 0.4 guide positions were created on a temporary basis and were filled by Andrew Applebee and Sue Ball. During the year the Museum also supported 3 local high school students, 2 adult workplace-retraining participants and 5 Flinders University students, by offering work experience at the National Motor Museum.

### **Volunteers**

Volunteers continue to be a major resource for the Museum for the delivery of services and maintenance of the collection. A volunteer program has been developed incorporating training sessions, excursions and exchange opportunities with other Museums. In addition a volunteer co-ordinator was appointed by the volunteers to liaise with the Director, Events Co-ordinator and Curatorial staff. Malcolm MacDowell has done an excellent job and improved volunteer/staff communication. We wish to thank all our volunteers for their continuing support of the Museum.

### **Conclusion**

With a busy program of exhibitions and events each year the National Motor Museum continues to attract a significant audience to the Adelaide Hills. But like many arts and tourism organisations maintaining an element of change is a constant challenge, especially as resources shrink. An entry fee which is high by national standards may be one element warranting critical evaluation in the next few years, especially as international practice moves towards free entry.

REBECCA HOSKIN  
Acting Director

**National Motor Museum**—Shannon Street, Birdwood 5234.

Tel: (08) 8568 5006 Fax: (08) 8568 5195

Website: [www.history.sa.gov.au](http://www.history.sa.gov.au)

Email: [motor@history.sa.gov.au](mailto:motor@history.sa.gov.au)

### **Admission Charges**

Adults	\$ 9.00
Concession	\$ 7.00
Children	\$ 4.00
Family	\$24.00

### **Opening Hours**

9:00am–5:00pm Daily except Christmas Day.

## SOUTH AUSTRALIAN MARITIME MUSEUM

*The South Australian Maritime Museum is recognised as being among the finest maritime museums in the world and one of the premier tourist attractions in South Australia. The Museum's attractions include the Bond Store exhibition galleries, a lighthouse and fleet of historic vessels.*

*The South Australian Maritime Museum was established in 1986 to collect, preserve, promote and interpret the State's maritime history. The Museum is spread over several sites including the Bond Store exhibition galleries, the Port Adelaide Lighthouse, the Bank administration building, stores at Netley, Shed 8 Port Adelaide and three floating vessels - MV Nelcebee (1883), police launch Archie Badenoch (1942) and steam tug Yelta (1949).*



*Maritime Museum guide Rob Lincoln demonstrates cargo handling on the ketch Active II*

## SOUTH AUSTRALIAN MARITIME MUSEUM

*The Museum has had a very active and successful year. We have opened two new core exhibitions and produced a major touring exhibition. We have brought to South Australia a series of high profile exhibitions which have attracted new audiences to the Museum, increased our visitor numbers and exceeded our target by 7 000 people. It is a particularly gratifying result which demonstrates the community's continuing interest in the Museum's changing programs.*

One highlight for the year was our attendance figures on Anzac Day 2002. With support from the RSL and Messenger Newspapers we commemorated Anzac Day by offering free admission to our new core exhibition *Action Stations!! The Navy and South Australia*. The response was fantastic. The Museum was able to offer people a way to mark Anzac Day by considering the history of Australian involvement in war. Over 2 200 people visited the Museum that day, which is a new record for visitation on a single day.

Overall this year we presented a very active program of changing exhibitions, bringing significant collections to South Australia, as well as highly interactive exhibitions for children. The result was particularly successful in attracting our target audiences of school groups and families, as well as a more general audience of adults. Sponsorship commitments of \$170,000 have made those programs possible and contributed to the ongoing development of the Museum. That is a substantial increase on sponsorship raised in recent years and, significantly, includes the first recurrent sponsorship, which has been critical in providing confidence to plan future programs.

Our volunteers remain one of the great strengths of the Museum in caring for our historic collections, our vessels and our library. They provide essential work and are a very tangible demonstration of broad community support for the Museum. We have built on that support this year by recruiting a new generation of volunteers to crew and care for our vessels.

In partnership with Flinders University, the Maritime Union of Australia and CSX World Terminals we have also commenced a significant research project on the archaeology of the Port. Based at the Museum, Susan Briggs is studying several sites around the Port for the evidence they contain of the lives of working people.

### **The redevelopment of Port Adelaide**

Two major projects are planned for the redevelopment of the Port and these are of great interest to the Museum, presenting both threats and opportunities. On the negative side the Museum will lose its store for large objects and workshop for maintaining its fleet when Shed 8, Dock 1 is demolished to make way for the third river crossing. We will need to find replacement facilities urgently. At the same time the planned development of waterfront land holds the potential to renew the Port for both residents and visitors. The Museum has a role as the largest cultural attraction in the Port and has produced a plan for an expanded attraction on the waterfront focusing on the history of the working port and the marine environment. That plan has attracted the interest of planners and prospective developers. They see its potential to provide a central tourist attraction and a strategic driver in the redevelopment of the Port. The Maritime Museum will continue to pursue potential options within the strategic priorities of the History Trust.

### **Exhibitions and public programs**

Exhibitions are the life-blood of any modern museum. This year the Maritime Museum completed two new core exhibitions as part of its ongoing redevelopment of the Bond Store Galleries. *Life's a Beach* opened on 6 July. It took an expansive view of maritime history and focused on the beach as the place where most South Australians met the sea. *Action Stations!! The Navy and South Australia* opened on 19 December. It fulfills a long held ambition of the Museum to present a naval history of the State and draws on our rich collection of paintings,

models and uniforms. The redevelopment of the core exhibitions was begun with some funding being provided by Arts SA and the Museum has been able to take it well beyond the original scope by raising support from the Centenary of Federation Advisory Committee and the Commonwealth Department of Veterans' Affairs.

The Maritime Museum was a major attraction for the State's *Encounter 2002* celebrations. As well as touring its own exhibition along the South Australian coast, the Museum brought to the State the most significant collection of Flinders material in the world when it presented *Matthew Flinders: the Ultimate Voyage*, an exhibition from the State Library of NSW. Opened by Minister John Hill, the exhibition included Flinders' hand-written log book, his charts, artwork of his voyages and personal possessions such as the chess set he used while detained on Ile de France. The exhibition was generously supported by Flinders Ports and was one of our most popular attractions for the year.

For the Christmas school holidays the Museum presented a very different display, *Sea Chest Secret*, an exhibition from the National Science and Technology Centre developed for primary school children. The Museum has long enjoyed a reputation as a venue for young families and *Sea Chest Secret* built on that foundation. The exhibition invited children to solve physical problems in a series of interactive exhibits and uncover clues to discover the identity of a mystery mariner, the cabin boy on James Cook's ship *Endeavour*.

Other exhibitions included *Follow the Sun*, a collection of travel posters from the 1930s to the 1950s and *Modelmania*, a display of the Museum's rich collection of ship models. The Museum also presented children's vacation programs on such crafts as cuttlefish carving, rope-work and putting ships in bottles.

The Museum's school programs continued to expand this year and we recorded our second highest number of school visits ever. That result is due to the success of *Matthew Flinders: the Ultimate Voyage* and to the ongoing popularity of school programs based on our core exhibitions. Of course one of the continuing successes of the Museum is the capacity of our fleet to provide schools with tours of the Port River, the working port, the marine environment and the dolphins.

### **History in the community**

Our major outreach program for the year was the touring exhibition *The Encounter: Flinders and Baudin*. Produced as part of *Encounter 2002*, it visited nine regional centres, attracted 8 087 visitors and was a central focus of the *Encounter 2002* celebrations. The exhibition was opened in Ceduna on 16 February 2002 by Governor Marjorie Jackson-Nelson, then moved in tandem with the tall ships retracing Flinders' voyage to Port Lincoln, Whyalla, Port Augusta, Port Pirie, Port Victoria, Kingscote, Victor Harbor and Robe. It was generously supported by Flinders Ports and the SA Tourism Commission and has been nominated for a national tourism award, together with an exhibition from the Art Gallery of South Australia. I wish to thank my colleagues in the Community History Unit and Curator Bill Seager who managed the exhibition tour.

In partnership with Le Fevre School, the Museum began a junior guides program in which 12–13 year old students act as guides to groups of primary school children visiting the Museum. Both students and teachers have been very enthusiastic about the way children respond when they are taught by other children and the program has generated considerable interest amongst museum educators.

During the year we also hosted a series of community exhibitions involving our community stakeholders directly in the programs of the Museum. These included exhibitions by the Port Adelaide Historical Society on the history of industry in the Port, by students from Flinders University on the archaeology of the Port and by students at Grange School on myths of the sea. The Museum also built closer relationships with associations preserving historic vessels in South Australia. Several of the Museum's volunteers also work on historic riverboats on the Murray and our Fleet Coordinator, Bob Holme, continued to provide advice on the maintenance of historic engines.

In all, Museum staff and volunteers presented over 70 lectures to associations ranging from Probus Clubs, to the State History Conference and the Company of Master Mariners. The Museum also hosted the 2002 meeting of the Australian Maritime Museums Council in March 2001 and staff served on the board of the Australian Association for Maritime History.



### **Collections management**

The Maritime Museum reviewed its collections management as part of a wider History Trust review. It highlighted the work to be done in continuing to improve storage and documentation and that has become a priority. Several volunteers have joined the Museum to contribute to that work and Curator Bill Seager is managing a program to address the problems over several years.

Maintaining the Museum's vessels continues to be a priority and this year substantial improvements were made to the Museum's launch *Archie Badenoch*, with the generous support of TXU Torrens Island. Major work was also completed on the steam tug *Yelta* to repair a cracked boiler and Artlab Australia built a new support structure for the ketch *Annie Watt*. A small group of volunteers has brought new energy to the lighthouse, restoring the clockwork mechanism to working order.

The Museum has been careful to limit the growth of its collection but has made several significant acquisitions during the year. These included the carved timber stern decoration from the French whaler *Ville De Bordeaux*. The ship was built in France in 1836 and, after a colourful life as a whaler, was broken up in Port Adelaide in the 1850s. The stern decoration is significant as a rare and early example of the craft with provenance relating to South Australia and is a particularly welcome addition to the Museum's collection. We already hold the figurehead from that ship.

Other significant acquisitions included two nineteenth century ship portraits by George Bourne and a generous gift from Sir James Willis, retired Chief of Naval Staff, of his collection of uniforms, books and photographs.

### **Resource management**

An audit of the Museum's buildings was completed during the year by consultant engineers. It found that a considerable amount of work was needed to return them to proper condition. Arts SA provided some funding to contribute to the most urgent work and that will result in renewal of the Museum's electrical and lighting systems. The Museum will continue to work with Arts SA to address the funding required for the other necessary work identified by the building audit.

### **Conclusion**

It is a pleasure to be looking back on a year in which the Museum attracted increased numbers of visitors to our exhibitions, our fleet and our education programs in Port Adelaide and also produced a major touring exhibition to reach communities in rural South Australia. Our continuing success depends on our ability to present a changing program of attractions which keeps the Museum fresh and relevant. That has been made possible by the energy and talent of the Museum's staff and volunteers and by the generous support we have received from our corporate sponsors.

KEVIN JONES  
Director

**South Australian Maritime Museum**—126 Lipson Street, Port Adelaide 5015.

Tel: (08) 8207 6255 Fax: (08) 8207 6266

Website: [www.history.sa.gov.au](http://www.history.sa.gov.au)

Email: [maritime@history.sa.gov.au](mailto:maritime@history.sa.gov.au)

### **Admission Charges**

Adults	\$ 8.50
Concession	\$ 6.50
Children	\$ 3.50
Family	\$22.00

### **Opening Hours**

10:00am–5:00pm Daily except Christmas Day.

## BUSINESS SERVICES

*During the year the former Administrative and Finance section of the History Trust was reorganised into a Business Services Unit. Long-serving Director of Administration and Finance, Lester Mackenzie, left the organisation in 2001. He has been sadly missed by his colleagues. Donna Tims replaced him as Manager, Business Services.*

The Business Services Unit concentrated in particular this year on improving the consistency of financial and general administrative systems within the History Trust and on working collaboratively with Arts SA on an OHS&W audit and strategy. Reviews of the History Trust's organisational structure and administrative structures at both the National Motor Museum and History Trust Directorate were also completed.

### Finances

A grant of \$3,626,000 was made to the History Trust to fund its operations in 2001-2002. The sum included \$185,000 in specific purpose funding for the Museums Accreditation and Grants Program and Community History Fund, both of which are administered by the Trust. It also included \$189,000 for Artlab Australia for conservation services, \$738,000 for accommodation costs including building maintenance and operating leases, \$69,000 for insurance and \$82,000 for Arts SA corporate service charges.

The financial outcome for the year was very pleasing. There was a net increase in cash of \$383,000, including admissions income which increased from \$605,000 to \$612,000. Most of this net increase represented income from specific project grants and sponsorships.

### Human resources

#### Staffing

A number of staff retired in October 2001. They were:

National Motor Museum:	Jon Chittleborough, Robert McGrath, Brenton Moar and Raelene Richter.
Migration Museum:	Perla Brittle and Walter Casha
Directorate:	Lester Mackenzie
Community History Unit:	Geoff Speirs

All were long-serving members of the History Trust and their contribution over the years was much appreciated.

The following staff commenced during this year:

National Motor Museum:	Rebecca Hoskin as Acting Director, Matthew Lombard as Graduate Curator, Sue Ball and Andrew Applebee as Part-time Guides
SA Maritime Museum:	Bill Seager as Curator
Migration Museum:	Catherine Manning as Graduate Curator

### Occupational Health, Safety and Welfare (OHS&W)

The Occupational Health, Safety and Welfare (OHS&W) Committee met on a regular basis. An on-site inspection of each division took place.

Arts SA engaged a consultant to do a gap analysis on OHS&W across the portfolio including the Trust. In February an Arts Central Consultative Committee (ACCC) was established, meeting fortnightly to establish a portfolio-wide OHS&W strategic plan. The History Trust's internal OHS&W Committee and the Management Group are also working through the Trust specific recommendations in conjunction with Arts SA. The History Trust has two representatives on the ACCC and greatly appreciates Arts SA's leadership in this area.

The History Trust is an exempt employer under the Workers' Compensation Act. As such it is responsible for meeting the cost of its own workers' compensation expenses. The cost of workers' claims and premiums, including salaries, totalled \$8,200 in this year.

Refer to Appendix 16 for the occupational health, safety and injury management table.

### Disability Action Plans

The Trust is working with Arts SA to establish a Disability Action Plan (DAP).

Leave Management	1998–99	1999–2000	2000–2001	2001–02
Average number of sick leave days taken per FTE	3.20	4.80	5.11	6.70
Average number of family carer leave days taken per FTE	0	0	0.17	0

### Policy development

A number of new policies were either developed or formally endorsed by the Board of the History Trust during the year. These included the following:

- *Advisory Committees*
- *Part-Time and Job Share*
- *Compressed Weeks*
- *Purchased Leave*

### Consultants

The following consultants were engaged during the year:

Project	Below \$10 000	\$10 000–\$50 000	Above \$50 000
Office for the Commissioner for Public Employment for the History Trust Structural and Administrative Review	9 000.00	0	0
<b>TOTAL</b>	<b>9 000.00</b>	<b>0</b>	<b>0</b>

### Overseas travel

None taken.

### Energy Efficiency Action Plan Reports

Refer to Appendix 17.

DONNA TIMS  
Business Manager

**History Trust of South Australia**—59 King William Street, Adelaide 5000,  
GPO Box 1836, Adelaide 5001  
Tel: (08) 8226 8555 Fax: (08) 8226 8559  
Website: [www.history.sa.gov.au](http://www.history.sa.gov.au)  
Email: [staff@history.sa.gov.au](mailto:staff@history.sa.gov.au)

## Financial Statement for the year ended 30 June 2002



**Auditor-General's  
Department**

9th Floor State Administration Centre,  
200 Victoria Square  
Adelaide  
South Australia 5000

Ref A02/091

Telephone: +61 +8 8226 9640  
Facsimile: +61 +8 8226 9688  
DX 56208 Victoria Square

9 September 2002

E-mail: [admin@audit.sa.gov.au](mailto:admin@audit.sa.gov.au)  
Web: <http://www.audit.sa.gov.au>

ABN: 53 327 061 410

Mr P Broderick  
Chairperson  
History Trust of South Australia  
GPO Box 1836  
ADELAIDE SA 5001

Dear Sir

The audit of the accounts of the History Trust of South Australia for the year ended 30 June 2002 has been completed.

The audit coverage encompassed all areas of the Trust's financial operations including payment of accounts, cash receipting and banking, debtors, asset registers and management of collections. Matters arising from the audit were referred in writing to the Chief Executive and a satisfactory response has been received.

Returned herewith are the Trust's financial statements together with my Independent Audit Report which is unqualified.

Yours faithfully

A handwritten signature in blue ink, appearing to read 'K I MacPHERSON'.

K I MacPHERSON  
AUDITOR-GENERAL



**Auditor-General's  
Department**

## **INDEPENDENT AUDIT REPORT**

**TO THE CHAIRPERSON  
HISTORY TRUST OF SOUTH AUSTRALIA**

### **SCOPE**

As required by section 31 of the *Public Finance and Audit Act 1987* and subsection 19(2) of the *History Trust of South Australia Act 1981*, I have audited the financial report of the History Trust of South Australia for the financial year ended 30 June 2002. The financial report comprises:

- A Statement of Financial Performance;
- A Statement of Financial Position;
- A Statement of Cash Flows;
- Notes to and forming part of the Financial Statements;
- A Certificate by the Chairperson, Chief Executive and the Business Manager.

The members of the History Trust of South Australia are responsible for the financial report. I have conducted an independent audit of the financial report in order to express an opinion on it to the Chairperson.

The audit has been conducted in accordance with the requirements of the *Public Finance and Audit Act 1987* and Australian Auditing Standards to provide reasonable assurance that the financial report is free of material misstatement.

Audit procedures included examination, on a test basis, of evidence supporting the amounts and other disclosures in the financial report and the evaluation of accounting policies and significant accounting estimates. These procedures have been undertaken to form an opinion whether, in all material respects, the financial report is presented fairly in accordance with Treasurer's Instructions promulgated under the provisions of the *Public Finance and Audit Act 1987*, Accounting Standards and other mandatory professional reporting requirements in Australia so as to present a view which is consistent with my understanding of the History Trust of South Australia's financial position, its financial performance and its cash flows.

The audit opinion expressed in this report has been formed on the above basis.

### **AUDIT OPINION**

In my opinion, the financial report presents fairly in accordance with the Treasurer's Instructions promulgated under the provisions of the *Public Finance and Audit Act 1987*, applicable Accounting Standards and other mandatory professional reporting requirements in Australia, the financial position of the History Trust of South Australia as at 30 June 2002, its financial performance and its cash flows for the year then ended.

**9 September 2002**

**K I MacPHERSON  
AUDITOR-GENERAL**

History Trust of South Australia

**HISTORY TRUST OF SOUTH AUSTRALIA**  
**Statement of Financial Performance for the year ended 30 June 2002**

	Note	Consolidated		HTSA	
		2002	2001	2002	2001
		\$'000	\$'000	\$'000	\$'000
<b>REVENUES FROM ORDINARY ACTIVITIES</b>					
User charges & fees	3	953	1 006	898	855
Interest		35	33	26	29
Other revenue	4	774	1 123	772	1 061
Grant from State Government: - operations		3 626	3 356	3 626	3 356
- capital		200	100	200	100
<b>Total Revenues</b>		<b>5 588</b>	<b>5 618</b>	<b>5 522</b>	<b>5 401</b>
<b>EXPENSES FROM ORDINARY ACTIVITIES</b>					
Employee costs	5	2 163	2 285	2 163	2 285
Services and supplies	6	2 609	2 658	2 593	2 611
Depreciation	7	528	526	528	526
Grant payments	8	203	174	203	174
<b>Total Expenses</b>		<b>5 503</b>	<b>5 643</b>	<b>5 487</b>	<b>5 596</b>
<b>SURPLUS/(DEFICIT) FROM ORDINARY ACTIVITIES</b>		<b>85</b>	<b>(25)</b>	<b>35</b>	<b>(195)</b>
<b>Non-owner transaction changes in equity</b>					
Net credit to an asset revaluation reserve on revaluation of non-current assets	15	2 536	388	2 536	388
Transfer of non-current assets		-	(2 436)	-	(2 436)
<b>Total revenues, expenses and valuation adjustments recognised directly in equity</b>		<b>2 536</b>	<b>(2 048)</b>	<b>2 536</b>	<b>(2 048)</b>
<b>TOTAL CHANGES IN EQUITY OTHER THAN THOSE RESULTING FROM TRANSACTIONS WITH THE STATE GOVERNMENT AS OWNER</b>		<b>2 621</b>	<b>(2 073)</b>	<b>2 571</b>	<b>(2 243)</b>

**Statement of Financial Position as at 30 June 2002**

	Note	Consolidated		HTSA	
		2002	2001	2002	2001
		\$'000	\$'000	\$'000	\$'000
<b>CURRENT ASSETS</b>					
Cash assets	9	668	303	658	275
Investments		210	142	-	-
Receivables		14	50	14	50
Inventories		92	93	92	93
Other assets	10	7	103	7	103
<b>Total Current Assets</b>		<b>991</b>	<b>691</b>	<b>771</b>	<b>521</b>
<b>NON-CURRENT ASSETS</b>					
Property, plant and equipment	11	16 248	14 704	16 248	14 704
Heritage collections	11	8 944	8 278	8 944	8 278
<b>Total Non-Current Assets</b>		<b>25 192</b>	<b>22 982</b>	<b>25 192</b>	<b>22 982</b>
<b>TOTAL ASSETS</b>		<b>26 183</b>	<b>23 673</b>	<b>25 963</b>	<b>23 503</b>
<b>CURRENT LIABILITIES</b>					
Payables	12	98	77	98	77
Provision for employee entitlements	13	144	137	144	137
<b>Total Current Liabilities</b>		<b>242</b>	<b>214</b>	<b>242</b>	<b>214</b>
<b>NON-CURRENT LIABILITIES</b>					
Payables	12	40	72	40	72
Provision for employee entitlements	13	242	349	242	349
<b>Total Non-Current Liabilities</b>		<b>282</b>	<b>421</b>	<b>282</b>	<b>421</b>
<b>TOTAL LIABILITIES</b>		<b>524</b>	<b>635</b>	<b>524</b>	<b>635</b>
<b>NET ASSETS</b>		<b>25 659</b>	<b>23 038</b>	<b>25 439</b>	<b>22 868</b>
<b>EQUITY</b>					
Accumulated surplus	14	21 125	21 040	20 905	20 870
Asset revaluation reserve	15	4 534	1 998	4 534	1 998
<b>TOTAL EQUITY</b>		<b>25 659</b>	<b>23 038</b>	<b>25 439</b>	<b>22 868</b>
<b>COMMITMENTS</b>	16				
<b>CONTINGENT LIABILITIES</b>	17				



History Trust of South Australia

## Statement of Cash Flows for the year ended 30 June 2002

	Note	Consolidated		HTSA	
		2002 \$'000	2001 \$'000	2002 \$'000	2001 \$'000
		Inflows (Outflows)	Inflows (Outflows)	Inflows (Outflows)	Inflows (Outflows)
<b>CASH FLOWS FROM OPERATING ACTIVITIES</b>					
<i>Receipts</i>					
User charges & fees		990	987	935	836
Interest		32	35	23	31
Other revenue		571	984	569	922
<i>Payments</i>					
Employee costs		(2 297)	(2 498)	(2 297)	(2 498)
Services and supplies		(2 486)	(2 619)	(2 470)	(2 572)
Grant Payments		(203)	(174)	(203)	(174)
<i>Cashflows From Government</i>					
Grant from State Government: - operations		3 626	3 356	3 626	3 356
- capital		200	100	200	100
<b>NET CASH PROVIDED BY OPERATING ACTIVITIES</b>	18	<b>433</b>	<b>171</b>	<b>383</b>	<b>1</b>
<b>CASH FLOWS FROM INVESTING ACTIVITIES</b>					
<i>Payments</i>					
Property, plant and equipment		-	(33)	-	(33)
Purchase of heritage collections		-	(15)	-	(15)
<b>NET CASH USED IN INVESTING ACTIVITIES</b>		<b>-</b>	<b>(48)</b>	<b>-</b>	<b>(48)</b>
<b>NET INCREASE/(DECREASE) IN CASH HELD</b>		<b>433</b>	<b>123</b>	<b>383</b>	<b>(47)</b>
CASH AT 1 JULY		<b>445</b>	<b>322</b>	<b>275</b>	<b>322</b>
CASH AT 30 JUNE	2(k)	<b>878</b>	<b>445</b>	<b>658</b>	<b>275</b>

## NOTES TO AND FORMING PART OF THE FINANCIAL STATEMENTS

## 1. The History Trust of South Australia (The Trust) Objectives

The Trust's objectives are to:

- raise the level of community and schools-based participation in the study and enjoyment of South Australian history and the preservation of its evidence;
- mount popular exhibitions, events and other public programs on South Australian history and actively involve the community in their research and preparation;
- preserve the state's collection of movable items;
- provide advice and assistance to museums, historical societies and authors.

## 2. Statement of Accounting Policies

(a) *Basis of Accounting*

The general purpose financial report has been prepared in accordance with the Treasurer's Instructions and Accounting Policy Statements promulgated under the provisions of the *Public Finance and Audit Act 1987*, Statements of Accounting Concepts, applicable Australian Accounting Standards and applicable Urgent Issues Group Consensus Views. The report has been prepared on an accrual basis of accounting and in accordance with conventional historical cost principles except where stated.

(b) *The Reporting Entity*

The Trust's principal source of funds consists of grants from the State Government. In addition, the Trust also receives monies from sales, admissions, donations and other receipts and uses the monies for the achievement of its objectives.

The financial report encompasses transactions through an interest bearing Deposit Account titled 'History Trust of South Australia' and any other funds through which the Trust controls resources to carry out its functions.

(c) *Principles of Consolidation*

The consolidated financial statements incorporate the assets and liabilities of entities controlled by the Trust as at 30 June 2002, and the results of all controlled entities for the year then ended. The effects of all transactions between entities in the consolidated entity are eliminated in full. Refer to note 26.

(d) *Revenue*

Revenue from sale of goods is recognised upon the delivery of goods to customers. Interest revenue is recognised on a proportional basis taking into account interest rates applicable to financial assets. Revenue from the rendering of a service is recognised upon the delivery of the service to the customers.

(e) *Grants from State Government*

Grants are recognised as revenue in the period which the Trust obtains control over the grants.

## History Trust of South Australia

**(f) Acquisition of Assets**

The cost method of accounting is used for the recording of assets acquired by the Trust. Heritage Collections are revalued to market value when accessioned. Assets donated during the year have been brought to account at market value.

**(g) Valuations of Non-Current Assets**

The Trust has adopted the deprival method as the basis of valuing its non-current assets.

In accordance with the transitional provisions of the Accounting Standard AASB 1041 "Revaluation of Non-Current Assets" the Trust has continued to apply the deprival value methodology as the basis of valuing its non-current assets.

**Land and Buildings**

Land and buildings have been valued at replacement cost. Valuations of land and buildings were determined as at 30 June 2002 by Tim Nankivell, Australian Valuation Office. Land and buildings are independently valued every three years.

**Plant and Equipment**

Plant and equipment has been valued at historical cost.

**Heritage Collections**

The heritage collections are large and diverse. They include many items that are complex to value given considerations of market and deprival value and their unique representation of South Australia's social history.

In 2000/01 the Trust was granted exemption by the Treasurer from compliance with APS3 "Revaluation of Non-Current Assets" which requires non-current assets to be revalued every three years. The collections will now be revalued as at 30 June 2003 excluding National Motor Museum motorcycle and motor vehicles as they are independently valued every two years. Valuations for these collections were determined as at 30 June 2002 by Antony Davies, Wemyss Pty Ltd.

After taking advantage of the transitional provisions of Australian Accounting Standard AAS 29 "Financial Reporting by Government Departments", the value of certain sections of the heritage collections held as at 1 July 1998 were determined as at 30 June 1998 using the valuation methodology outlined below. Heritage assets acquired between 1 July 1998 and 30 June 2002 have been brought to account at market value.

The Trust adopted the following methodology for valuing heritage assets held as at 1 July 1998.

Items under \$10,000 were valued by the appropriate internal curator and items over \$10 000 were valued by external valuers listed below.

The external valuations were carried out by the following recognised industry experts:

<i>National Motor Museum</i>	
Wemyss (Fine Art Auctioneer) Pty Ltd	Antony Davies
R & D Motorbooks	Rob Saward
Antiquarian Books	Michael Treloar
Leonard Woodley Consulting	Leonard Woodley
Vintage Auto Parts	Kevin Field
<i>South Australian Maritime Museum</i>	
Sea Witch Antiques	Christine Courtney
Graeme K Andrews Productions	Graeme K Andrews
Quin's Yacht Brokerage Pty Ltd	Jim Runnegar
<i>Migration Museum</i>	
Port Noarlunga Country Collectables	Jean Morris
Regimentals Antiques	Lee Blair-Jenke

**(h) Depreciation of Non-Current Assets**

Depreciation is calculated on a straight line basis to write off the net cost or revalued amount of each non-current asset over its expected useful life except for land and heritage collections which are not depreciable. Estimates of remaining useful lives are made on a regular basis for all assets, with annual reassessments for major items.

The expected useful lives are as follows:

Building and improvements	Years
Plant and equipment	20-100
	3-25

Heritage Collections have unlimited useful lives. Their future economic benefits have not been consumed during the financial year, therefore no depreciation is recognised in respect of these assets.



## History Trust of South Australia

(i) **Employee Entitlements**(i) **Wages, Salaries and Annual Leave**

Liabilities for wages, salaries and annual leave are recognised and are measured as the amount unpaid at the reporting date at current pay rates in respect of employees' services up to that date.

(ii) **Long Service Leave**

A liability for long service leave has been recognised as the amount the Trust has a present obligation to pay, resulting from employees' services provided up to the reporting date. The liability has been calculated at nominal amounts based on current wage and salary rates using a benchmark of 8 years service as advised by the Department of Treasury and Finance.

(iii) **Superannuation**

Contributions are made by the Trust to several superannuation schemes operated by the State Government. These contributions are treated as an expense when they occur. There is no liability for payments to beneficiaries as they have been assumed by the respective superannuation schemes. The only liability outstanding at balance date relates to amounts due but not yet paid to the superannuation schemes.

(iv) **Workers Compensation**

A liability has been reported to reflect unsettled workers compensation claims. The amounts recorded are based on an actuarial assessment and reflect an apportionment of the whole-of-government estimate of workers compensation liability, according to the Trust's experience of claim numbers and payments over the period 1 July 1987 to 30 June 2002. A separate valuation of the liabilities of the Trust has not been undertaken and if such a valuation was performed it might result in a different assessed liability.

(j) **Leases**

The Trust has entered into a number of operating lease agreements for accommodation where the lessors effectively retain all of the risks and benefits incidental to ownership of the items held under the operating leases.

Operating lease payments are representative of the pattern of benefits derived from the leased assets and accordingly are charged to the Statement of Financial Performance in the periods in which they are incurred.

(k) **Cash**

For the purpose of the Statement of Cash Flows, cash includes cash on hand and at bank and investments.

(l) **Inventories**

Inventories are measured at actual cost.

(m) **State Government Funding**

The general purpose financial report is presented under the assumption of ongoing financial support being provided to the Trust by the State Government.

(n) **Accounting for the Goods and Services Tax (GST)**

In accordance with the requirements of the UIG Abstract 31 "Accounting for the Goods and Services Tax (GST)" revenues, expenses and assets are recognised net of the amount of GST.

The amount of GST incurred by the Trust as a purchaser that is not recoverable from the Australian Taxation Office is recognised as part of the cost of acquisition of an asset or as part of an item of expense.

The net GST receivable/payable to the Australian Taxation Office is not recognised as a receivable/payable in the Statement of Financial Position as the Trust is a member of an approved GST group of which Arts SA (a division of the Department of the Premier and Cabinet) is responsible for the remittance and collection of GST. There are no cashflows relating to GST transactions with the Australian Taxation Office in the Statement of Cash Flows.

## History Trust of South Australia

		Consolidated		HTSA	
		2002	2001	2002	2001
		\$'000	\$'000	\$'000	\$'000
3.	<b>User charges and fees</b>	612	605	612	605
	Admissions and tours	78	37	78	37
	Facilities and rent	214	306	159	155
	Sales of goods	6	12	6	12
	Publications	43	46	43	46
	Fees for service				
		953	1 006	898	855
4.	<b>Other revenue</b>	251	397	249	335
	Sponsorship	269	314	269	314
	Grants	202	140	202	140
	Fair value of assets received free of charge	52	272	52	272
	Other revenue				
		774	1 123	772	1 061
5.	<b>Employee costs</b>	1 827	2 032	1 827	2 032
	Wages and salaries	278	325	278	325
	Superannuation and payroll tax expenses	58	(72)	58	(72)
	Annual leave, long service leave and other employee expenses				
		2 163	2 285	2 163	2 285
6.	<b>Services and supplies</b>	362	340	357	316
	Building maintenance	170	185	170	185
	Accommodation	211	211	211	211
	Operating leases	361	488	361	488
	Exhibitions and collections	36	45	36	45
	Sponsorships	101	79	101	79
	Cost of goods sold	103	82	103	82
	Travel expenses	449	348	449	348
	Professional fees	190	190	181	177
	Communication and stationery	307	293	305	287
	Marketing and publicity	60	86	60	86
	Staff training and other staff costs	69	88	69	88
	Insurance	190	223	190	219
	Other sundry payments				
		2 609	2 658	2 593	2 611
7.	<b>Depreciation</b>				
	Depreciation was charged in respect of:				
	Buildings and improvements	499	496	499	496
	Plant and equipment	29	30	29	30
		528	526	528	526
8.	<b>Grant payments</b>				
	Principal grants and assistance were:				
	Community History	31	22	31	22
	Museum Accreditation and Grants Program	150	150	150	150
	Other Grant Payments	22	2	22	2
		203	174	203	174
9.	<b>Cash assets</b>				
	Cash on hand	25	42	15	14
	Cash at bank	643	261	643	261
		668	303	658	275
10.	<b>Other assets</b>				
	Interest	3	-	3	-
	Prepayments	4	103	4	103
		7	103	7	103

H

## History Trust of South Australia

11.	<b>Non-Current Assets</b>	<b>(a) Property, plant and equipment and heritage collections</b>	Consolidated		HTSA	
			2002 \$'000	2001 \$'000	2002 \$'000	2001 \$'000
	Land		2 284	1 735	2 284	1 735
	At independent valuation					
	Buildings and improvements		29 369	26 769	29 369	26 769
	At independent valuation		15 468	13 892	15 468	13 892
	Less: Accumulated depreciation		13 901	12 877	13 901	12 877
	Total Property		16 185	14 612	16 185	14 612
	Plant and equipment at cost		363	363	363	363
	Less: Accumulated depreciation		300	271	300	271
	Total Plant and equipment		63	92	63	92
	Heritage collections					
	At independent valuation		8 944	8 278	8 944	8 278
	Total Property, plant and equipment and heritage collections		25 192	22 982	25 192	22 982
	<b>(b) Asset Movement Schedule</b>					
	Land:					
	Carrying amount at 1 July		1 735	2 463	1 735	2 463
	Disposals		-	(728)	-	(728)
	Net revaluation increments		549	-	549	-
	Carrying amount as 30 June		2 284	1 735	2 284	1 735
	Buildings and improvements:					
	Carrying amount at 1 July		12 877	15 081	12 877	15 081
	Disposals		-	(1 708)	-	(1 708)
	Depreciation		(499)	(496)	(499)	(496)
	Net revaluation increments		1 523	-	1 523	-
	Carrying amount as 30 June		13 901	12 877	13 901	12 877
	Plant and equipment:					
	Carrying amount at 1 July		92	89	92	89
	Additions		-	33	-	33
	Depreciation		(29)	(30)	(29)	(30)
	Carrying amount as 30 June		63	92	63	92
	Heritage collections:					
	Carrying amount at 1 July		8 278	7 736	8 278	7 736
	Donations		202	139	202	139
	Additions		-	15	-	15
	Net revaluation increments		464	388	464	388
	Carrying amount as 30 June		8 944	8 278	8 944	8 278
12.	<b>Payables</b>					
	Current:					
	Creditors and accruals		98	77	98	77
			98	77	98	77
	Non-Current:					
	Creditors and accruals		40	72	40	72
			40	72	40	72
13.	<b>Provisions for employee entitlements</b>					
	Current:					
	Provision for annual leave		119	104	119	104
	Provision for long service leave		20	29	20	29
	Provision for workers compensation		5	4	5	4
			144	137	144	137
	Non-Current:					
	Provision for long service leave		227	333	227	333
	Provision for workers compensation		15	16	15	16
			242	349	242	349
14.	<b>Accumulated surplus</b>					
	Balance at 1 July		21 040	23 501	20 870	23 501
	Transfer of non-current assets		-	(2 436)	-	(2 436)
	Surplus/(Deficit) from ordinary activities		85	(25)	35	(195)
	Balance at 30 June		21 125	21 040	20 905	20 870
15.	<b>Asset revaluation reserve</b>					
	Balance at 1 July		1 998	1 610	1 998	1 610
	Net increase in asset revaluation reserve					
	Property		2 072	-	2 072	-
	Heritage Collections		464	388	464	388
	Balance at 30 June		4 534	1 998	4 534	1 998

## History Trust of South Australia

16.	Commitments for Expenditure (a) Operating Leases	Consolidated		HTSA	
		2002 \$'000	2001 \$'000	2002 \$'000	2001 \$'000
	Commitments under non-cancellable operating leases at the reporting date are payable as follows:				
	Not later than one year	198	217	198	217
	Later than one year and not later than five years	841	922	841	922
	Later than five years	1 335	1 019	1 335	1 019
		<b>2 374</b>	<b>2 158</b>	<b>2 374</b>	<b>2 158</b>

These operating lease commitments are not recognised in the financial report as liabilities.

The property leases are non-cancellable leases, with rental payable monthly in arrears. Contingent rental provisions within the lease agreements require the minimum lease payments to be increased annually based on CPI movement. Options exist to renew the leases at the end of the term of the leases.

16.	(b) Capital Commitments	Consolidated		HTSA	
		2002 \$'000	2001 \$'000	2002 \$'000	2001 \$'000
	Capital expenditure contracted for at the reporting date is payable as follows:				
	Not later than one year	-	100	-	100
		<b>-</b>	<b>100</b>	<b>-</b>	<b>100</b>

These capital commitments are not recognised in the financial report as liabilities

17. **Contingent Liabilities**  
There are no contingent liabilities as at 30 June 2002.

18. Reconciliation of Surplus/(Deficit) from Ordinary Activities to Net Cash provided by Operating Activities				
Surplus/(Deficit) from ordinary activities	85	(25)	35	(195)
Non-cash items:				
Depreciation expense	528	526	528	526
Donation of collections	(202)	(139)	(202)	(139)
Change in operating assets and liabilities:				
(Increase) Decrease in assets	133	22	133	22
Increase (Decrease) in liabilities	(111)	(213)	(111)	(213)
<b>Net Cash provided by Operating Activities</b>	<b>433</b>	<b>171</b>	<b>383</b>	<b>1</b>

19. **Remuneration of Board Members**  
The number of Board Members who received annual income fell within the following band:
- |               | 2002<br>Number of<br>Members | 2001<br>Number of<br>Members |
|---------------|------------------------------|------------------------------|
| \$0 - \$9 999 | 9                            | 9                            |
- The total income received by these Board Members for the year was \$6 000 (\$9 000).

20. **Remuneration of Employees**  
The number of employees whose annual remuneration was over \$100,000 fell within the following band:
- |                     | 2002<br>Number of<br>Employees | 2001<br>Number of<br>Employees |
|---------------------|--------------------------------|--------------------------------|
| \$110 000-\$119 000 | 1                              | -                              |
- The total remuneration received by this employee for the year was \$118 000.

21. **Remuneration of Auditors**  
Fees accrued for the year for the provision of auditing services are \$26 000 (\$25 000).  
The auditors provided no other services.

22. **Payments to Consultants**  
Payments to consultants fell within the following band:
- |                | 2002<br>Number of<br>Consultants | 2001<br>Number of<br>Consultants |
|----------------|----------------------------------|----------------------------------|
| \$0 - \$10 000 | 1                                | 1                                |
- Total payments to the consultants engaged amounted to \$9 000 (\$5 000).

23. **Related Parties Disclosures**  
During the financial year the following persons held positions on the Trust Board:

Dr M Allen	Ms S Filby (from December 2001)
Ms M Danvers (until April 2002)	Mr J A Fotheringham
Professor I E Davey	Mr A Khoo (until March 2002)
Ms A Dopson (until July 2001)	Mrs J R Murdoch
Dr J Ellis	

The Members of the Trust, or their related entities, have transactions with the Trust that occur within a normal employee, customer or supplier relationship on terms and conditions no more favourable than those with which it is reasonably expected the entity would have adopted if dealing with the Member or related entity at arm's length in similar circumstances.

## History Trust of South Australia

## 24. Targeted Voluntary Separation Package Scheme (TVSPs)

	2002 Number of Employees 8	2001 Number of Employees 1
Number of employees paid TVSPs		
Amount paid to these employees:	2002 \$'000	2001 \$'000
TVSP	602	35
Accrued annual and long service leave	198	20
	800	55
Amount recovered from the Department of the Premier and Cabinet	602	35

## 25. Financial Instruments

## (a) Terms and Conditions

Financial Instrument	Note	Accounting Policies and Methods	Nature of Underlying Instrument
<b>Financial Assets:</b>			
Cash on hand and at bank	9	Cash at bank is recorded at its nominal amount. Interest revenue is recorded on an accrual basis with some funds held within the total cash balance being non-interest bearing.	Interest is calculated based on the average daily balances of the interest bearing funds. The interest bearing funds of the Trust are within the Section 21 Account titled 'History Trust of South Australia'. The interest rate is the Treasury Approved Interest Rate on Deposit Accounts, which is 4.17 percent (as at 30 June 2002).
Investments		Investments are brought to account at cost. Interest is credited to revenue as it accrues.	Term Deposit. Interest income is received biannually.
Receivables		Receivables are recorded at amounts due to the Trust. They are recorded when services have been completed.	Receivables are due within 30 days.
<b>Financial Liabilities:</b>			
Payables	12	Creditors are recorded at the agreed amounts at which the liabilities are to be settled. They are recorded when invoices are received.	Terms of payment are 30 days unless otherwise agreed in the terms and conditions of individual contracts.

## (b) Interest Rate Risk

Financial Instrument	Consolidated 2002				Consolidated 2001			
	Interest Rate Percent	Interest Bearing - Floating Interest \$'000	Non- Interest Bearing \$'000	Total \$'000	Interest Rate Percent	Interest Bearing - Floating Interest \$'000	Non- Interest Bearing \$'000	Total \$'000
Financial Assets:								
Cash on hand and at bank	4.17	643	25	668	5.06	261	42	303
Investments	5.15	210	-	210	4.25	142	-	142
Receivables		-	14	14		-	50	50
		853	39	892		403	92	495
Financial Liabilities:								
Payables		-	50	50		-	27	27
		-	50	50		-	27	27

## (c) Net Fair Values of Financial Assets and Liabilities

Financial Instrument	Note	Consolidated 2002		Consolidated 2001	
		Total Carrying Amount \$'000	Net Fair Value* \$'000	Total Carrying Amount \$'000	Net Fair Value* \$'000
Financial Assets:					
Cash on hand and at bank	9	668	668	303	303
Investments		210	210	142	142
Receivables		14	14	50	50
		892	892	495	495
Financial Liabilities:					
Payables	12	50	50	27	27

\* The net fair value is determined as the carrying value of all assets and liabilities.

## (d) Credit Risk Exposure

The Trust's maximum exposure to credit risk at the reporting date in relation to financial assets is the carrying amount of those assets as indicated in the Statement of Financial Position.

The Trust has no significant exposures to any concentrations of credit risk.

## 26. Controlled Entity

The consolidated financial statements at 30 June 2002 include following controlled entity:

Name of Controlled Entity	Place of Incorporation
The Migration Museum Foundation Incorporated	Australia



*History Trust of South Australia*

In our opinion, the attached Financial Statements of the History Trust of South Australia, being the Statement of Financial Performance, Statement of Financial Position and Statement of Cash Flows for the year ended 30 June 2002 and notes thereto, present fairly, in accordance with the Treasurer's Instructions and Accounting Policy Statements promulgated under the provisions of the *Public Finance and Audit Act, 1987* (as amended), Statements of Accounting Concepts, applicable Australian Accounting Standards and applicable Urgent Issues Group Consensus Views. In addition, internal controls over financial reporting have been effective throughout the reporting period.



P Broderick  
CHAIRPERSON



M Anderson  
CHIEF EXECUTIVE



D Tims  
BUSINESS MANAGER

TWENTY SECOND ANNUAL REPORT

OF THE

HISTORY TRUST  
of  
SOUTH AUSTRALIA

FOR THE

YEAR ENDED 30 JUNE 2002

**APPENDICES**

## 1. Board of trustees

---

Alec Khoo, BA, GradDip (Admin), FNIA, AFPA, FAICD (*Chairperson to March 2002*)

Margaret Allen, BA (Hons), DipEd, MA (History), MA (Social History), PhD

Marie Danvers, DipT (*Resigned April 2002*)

Ian Davey, BA (Hons), MA, PhD, DipEd

Allanah Dopson, BMus GradDip (Arts) (London), AmusA (*Resigned July 2001*)

Julie–Ann Ellis, BA (Hons), DipEd, PhD

Susan Filby, LL.B, Comp Dir Course Diploma (*From December 2001*)

John Fotheringham, BTech (Civil), MIE Aust, FAICD

Judith R. Murdoch, BSc, BEd, DipT

## 2. Management personnel

---

Margaret Anderson, BA (Hons), MA, DipEd	Chief Executive
Doreen Bate, BA (Hons)	Manager, Marketing
Jon Chittleborough, BA (Hons), MA, DipEd	Director, National Motor Museum ( <i>To October 2001</i> )
Rebecca Hoskin	Acting Director, National Motor Museum ( <i>From October 2001</i> )
Kevin Jones, BA (Hons), Grad Dip Mus Stud	Director, South Australian Maritime Museum
Lester Mackenzie, BB, JP	Director, Administration and Finance ( <i>To October 2001</i> )
Geoff Speirs, BA (Hons), DipEd	Museum Services Manager ( <i>To October 2001</i> )
Vivienne Szekeres, BA (Hons), BEd	Director, Migration Museum
Donna Tims	Business Manager ( <i>From October 2001</i> )
Kate Walsh, BA (Hons) DipEd	Manager, Community History Unit ( <i>From October 2001</i> )



### 3. Staff as at 30 June 2002

---

#### **Directorate and Business Services**

Margaret Anderson, Chief Executive  
 Lisa Barca, Records Administrator  
 Renee Barnes, Administrative Officer  
 Doreen Bate, Marketing Manager

Morgan Paparella, IT Officer  
 Anna Ragosa, Chief Executive's Secretary  
 Lee Tillett, Marketing Officer  
 Donna Tims, Business Manager

#### **Community History Unit**

Kate Walsh, Manager, Community History Unit  
 Lynn Drew, Information Resources Manager

Margaret Phillips, Historical Research Officer  
 Amanda James, Community History Officer

#### **Migration Museum**

Viv Szekeres, Director  
 Jessamy Benger, Administrative Officer  
 Ting Adolphus, Guide  
 Marg Degotardi, Designer  
 Christine Finnimore, Senior Curator  
 Elizabeth Galatsanos, Guide  
 Rosa Garcia, Education Officer\*

Catherine Manning, Curator  
 Lata Mayer, Guide  
 Sue Milln, Guide  
 Suzanne Redman, Guide  
 Deidre Robb-James, Guide  
 Rebecca Rudzinski, Operations Manager  
 Pat Stretton, Guide

#### **National Motor Museum**

Rebecca Hoskin, Acting Director  
 Andrew Applebee, Guide  
 Julie Baird, Senior Curator  
 Sue Ball, Guide  
 Bruno Davids, Administrative Officer  
 Mark Eckermann, Designer  
 Kathy Edelbauer, Operations Manager  
 Immanuel Hansen, Restoration Mechanic  
 Ian Hay, Coachbuilder

Dianne Jeffries, Guide  
 Matthew Lombard, Curator  
 Bob McGrath, Maintenance Supervisor  
 Bob Mulyk, Guide  
 Keith Norrish, Groundsperson  
 Pauline Renner, Events Coordinator  
 Raelene Richter, Guide  
 Sue Wheeler, Operations Manager

#### **South Australian Maritime Museum**

Kevin Jones, Director  
 Rebecca Baker, Administrative Officer  
 Susan Briggs, Research Associate\*\*  
 Mark Churchman, Guide  
 Robert Holme, Fleet and Volunteer Coordinator  
 Rob Lincoln, Guide

Trish Mathieson, Guide  
 Liz Murphy, Education Officer\*  
 Ray Reynolds, Guide  
 Bill Seager, Curator  
 Joan Westwood, Operations Manager

\* Seconded from the Open Access College of the Department of Education, Training and Employment (DETE)

\*\* Located at the Museum as part of Phd scholarship with Flinders University.

## 4. Advisory committees

---

### National Motor Museum

Mr George Brooks	Motoring Historian
Mr Michael Crawford	CMV Group of Companies
Mr Bob Gell	Commercial Manager, Royal Automobile Association
Cr Val Hall	Adelaide Hills Council
Mr Ian Horne	Executive Director, Motor Traders Association
Mr Terry Parker	Historic Vehicle Expert
Ms Joan Sutcliffe	Volunteer

## 5. Honorary consultants

---

<b>Weapons Curator</b>	Mr Lee Blair-Jenke (located at the Migration Museum)
<b>Rail Heritage Collections</b>	Mr Frank McDonnell (located at the Directorate)

## **6. Migration Museum Foundation committee members**

---

Chair	Mr Alec Khoo
Treasurer	Mr Raymond G. Tuckfield
Secretary	Ms Rebecca Rudzinski
Members	The Hon Julian Stefani, OAM MLC
	Mr Trevor Peacock
	Prof Judith Brine
	Mr Randolph Alwis
	Mr Alex Gardini
	Ms Andrea Stylianou
	Mr Christo Stoyanoff
	Ms Viv Szekeres

## 7. Volunteers

---

The History Trust is extremely grateful for the services of a large number of volunteers. We could not manage our museums, special events and collections without them and thank them most sincerely for their continuing work on our behalf.

### Directorate/Community History Unit

George Brooks  
Bernie Challen  
Jan Fisher

Diane Hobbs  
Milton Gooley

Tony Kaukas  
Peter Neville

### Migration Museum

Sarah Beinke  
Tarita Clark  
Nikki Crowther  
Val Darby  
Andrew Dennis

Kristy Dermody  
Glenys Edwards  
Helen Floyd  
Barbara Holbourn  
Rob Howie

Leith MacGillivray  
Jan Mudge  
Lizzie Russell  
Peg Saddler  
David Thomas

### National Motor Museum

Rebecca Baker  
Brian Barber  
Jeff Beatty  
Valerie Beatty  
Brenda Blakely  
Alan Boman  
Damian Buckley  
Eddie Burgess  
Frank Carey  
David Catto  
Colin Charlesworth  
Ruth Charlesworth  
Fran Clemow  
Tim Clemow  
Arthur Clisby  
Nola Clisby  
Geoff Coat  
Lynne Cook  
Jim Cowin  
Peter Dalton  
Raelene Day  
Clive Dennett  
Lynton Denton  
Gordon Dick  
Glen Dix  
Janet Egan  
Martin Elliott  
Colin Emmett  
Norma Emmett  
Chris Engelson

Bob England  
Kate Farrer  
Roy Feather  
Heather Fischer  
Peter Flaherty  
Michael Ford  
Leith Franklin  
Terry Franklin  
Bill Gallagher  
Geoffrey Glynn-Roe  
Ashley Grant  
Graeme Harrington  
Peter Harrold  
Nick Hector  
Glen Heusler  
Lyndal Howard  
Rex Howard  
Andrew Paul Hunt  
Dennis Jenke  
Robert Johnson  
Danny Kay  
Donald Kay  
Beth Knuckey  
Brett Knuckey  
Paul Lawson  
David Manson  
Carolyn Mason  
Lindsay Mason  
Andrew McCarthy  
Julie McCowat

Raelene McCowat  
Sarah McDonald  
Malcolm McDowell  
Daryl Meek  
Julia Meek  
John Newman  
Kevin Osborne  
Rob Pilgrim  
Jonathon Pyleq  
Wally Reeve  
Jenni Roberts  
Leith Roberts  
Richard Russ  
Brian Schmidt  
Tanya Sickerdick  
Allan Steel  
David Stevenson  
Bill Stewart  
Peter Stopford  
Joan Sutcliffe  
Ivan Sutton  
Jim Thompson  
Sarah Trangmar  
John Van Manen  
Mal Wade  
Wolfgang Warmer  
Bill Watson  
Joy Watson  
Kevin Webb  
Rick Whitehead

## 7. Volunteers (Cont.)

---

### South Australian Maritime Museum

Arthur Anson	Hamish Holmes	Jim Paul
David Avenell	John Hornby	Lloyd Physick
Andrew Bassett	Trevor Hosking	Brian Rice
Alexander Cameron	Harry Jeffery	Chris Richards
John Carlstrom	John Kempton	Karen Ross-Park
Roy Croft	David Kilday	Gordon Schwab
Tony Crosse	Rebecca Kilday	Bob Sexton
Lawrence Crowe	Wayne Kilowsky	Doreen Sharkey
Vic Damato	John Lawrence	Brian Shaw
Maurie Denham	Keith LeLeu	Ron Simms
James Dickson	Jeff Levett	Erin Sinclair
John Douglas	Andrew Mangnoson	Wayne Smith
Colin Emmett	Bob McClelland	William Sweeting
Jack Forbes	Ron McCluskey	Peter Tulloch
Keith Ford	John McNair	Jack Van Reyden
Brian Forster	Norm Mercer	Neil Waller
Stewart Freeman	James Morley	Bill Weste
Pat Guilfoyle	Marjorie Morris	Neil Wigan
Cyril Haire	Peter Murrie	David Wilson
John Hall	Margaret Muscat	Alan Workman
Graeme Hammer	Peter Nearnmy	Bob Zemetis
William Hammond	Zenon Oniszk	
Neil Hepburn	Marion Osborne	

## 8. Performance indicators 2000–2001

	1998–99	1999–2000	2000–2001	2001–2002
<b>Access by the South Australian Community to the State's Cultural Heritage</b>				
Visitor numbers (total)	284 149	300 000	302 360	●454 105
School numbers (total)	-	-	-	38 623
Travelling exhibitions – outward	3	3	2	4
Number of community organisations assisted	1 924	1 900	4 291	5 184
Number of enquiries	12 091	8 513	6 287	11 828
<b>Development of the State's Collections</b>				
Number of objects managed	◆22 853	◆22 842	◆30 631	33 386
% collection housed and managed to Australian Museum Standards	-	-	-	18%
<b>Financial Performance</b>				
Revenue generated				
– admissions	\$518,000	\$582,000	\$605,300	\$612,000
– functions/facilities hire	\$193,000	\$207,000	\$37,500	\$78,000
– book/gift shops	\$134,000	\$158,000	\$166,800	\$159,000
– Commonwealth grants	\$10,000	\$280,000	\$218,000	\$314,000
– donations	\$13,000	\$42,000	\$15,000	\$16,600
– sponsorship     ✧ cash	\$303,000	\$359,000	\$385,000	\$249,000
✧ in-kind (media only)	\$161,300	\$235,000	\$830,000	\$515,000
– other (interest on investments)	\$45,000	\$197,000	\$433,000	\$268,000
Revenue from independent sources as a proportion of operating costs	37%	26%	37%	47%
Number of volunteers on books at 30 June	192	135	203	171
and the estimated person hours contributed for the year	27 486	18 683	19 965	18 358
<b>Contribution to Cultural Tourism and Cultural Export</b>				
Tourists visiting				
– Interstate (percentage of total)	20.10%	20.30%	20.00%	27.23%
– Overseas (percentage of total)	22.19%	24.20%	22.00%	24.03%
<b>Development of new Audiences</b>				
Number of new audience initiatives undertaken	7	2	12	4

● Includes 153,661 visitors to the Trust's travelling exhibitions.

\* Includes estimated whole route audience for the *1998 RAA Bay to Birdwood Run*.

◆ Excludes Nautical Museum collection held by the South Australian Maritime Museum.

Note: The Trust's performance indicators were expanded and restructured in 1997–98 as part of its first Funding and Performance Agreement with Arts SA. This accounts for the various lines for 1996–97 for which no figures are provided.

## 9. Museums Accreditation and Grants Program

---

### a) Accredited museums at 30 June 2002

Australian Electric Transport Museum, St Kilda (Tramway Museum). Accredited 1992.  
 Axel Stenross Maritime Museum, Port Lincoln. Accredited 2001.  
 City of Unley Museum. Accredited 1992.  
 Melrose Courthouse Museum. Accredited 1998.  
 Millicent National Trust Museum. Accredited 1989.  
 National Railway Museum, Port Adelaide. Accredited 2001.  
 The Sheep's Back Museum, Naracoorte National Trust. Accredited 1989.  
 South Australian Aviation Museum, Port Adelaide. Accredited 2000.

### b) Registered museums at 30 June 2002

Adelaide Gaol Museum	Friedensberg Early German (Church) School, Springton
Adelaide Lithuanian Museum, Norwood	Gawler National Trust Folk Museum
Adelaide Masonic Centre Museum	Goolwa National Trust Museum
Ardrossan National Trust Museum	Hahndorf Academy Museum
Ayers House, Adelaide	Henley and Grange Historical Society
Bakehouse Museum, Crystal Brook	Highercombe Inn National Trust Museum, Tea Tree Gully
Barossa Valley Archives and Historical Trust, Tanunda	Hindmarsh Museum
Booleroo Steam and Traction Preservation Society	Hope Cottage National Trust Museum, Kingscote
Brinkworth Museum	Jamestown National Trust Museum
Burra National Trust Museum	John Riddoch Interpretive Centre, Penola National Trust
Camp Coorong Cultural Museum, Meningie	Kapunda Museum
Captain's Cottage Museum, Murray Bridge	Keith National Trust Museum
The Charles Sturt Memorial Museum Trust (Sturt House)	Kensington and Norwood History Centre
Clare National Trust	Kimba and Gawler Ranges Historical Society Museum
Clayton Farm Museum, Bordertown	Kingston National Trust Museum
Cleve National Trust Museum	Koppio Smithy National Trust Museum
Cobdogla Irrigation Museum, Barmera National Trust	Lameroo and Districts Historical Society
Collingrove Homestead, Angaston	Langdon Badger Family Trust Spitfire Museum
Edithburgh Museum	Leake Brothers' Woolshed, Glencoe
Embroiderers' Guild Museum, Mile End	Lobethal Archives and Historical Museum
Enfield and Districts Historical Society Museum (Sunnybrae Farm)	Lock and Districts Heritage Museum
Flinders University Art Museum	Loxton Historical Village
Fort Glanville Historical Association Museum	

## 9. Museums Accreditation and Grants Program (Cont.)

---

### b) Registered museums at 30 June 2002 (Cont.)

Maitland National Trust Museum	Port Victoria National Trust Museum
Mallee Tourist and Heritage Centre, Pinnaroo	Prospect Hill Museum
Mannum Dock Museum	Radium Hill Museum
Mary MacKillop Centre, Norwood	Redhill Museum
Mary MacKillop Penola Centre (Woods-MacKillop Schoolhouse)	Roseworthy Agricultural Museum
Mill Cottage Museum, Port Lincoln	Scholz Park Museum, Riverton
Moonta National Trust Museum	Signal Point River Murray Interpretive Centre, Goolwa
Mount Gambier Courthouse Law and Heritage Centre	South Australian Police Historical Museum, Adelaide
Mount Laura Homestead, Whyalla National Trust Museum	Stansbury Museum
National Dryland Farming Centre, Kadina National Trust	Strathalbyn National Trust Museum
Old Customs and Stationmaster's House, Victor Harbor National Trust	Streaky Bay National Trust Museum
Old Wool and Grain Store Museum, Beachport National Trust	Swan Reach Museum
Olivewood, Renmark National Trust	Terowie Pioneer Gallery
Penneshaw Maritime and Folk Museum, Penneshaw National Trust	Ukrainian Museum, Hindmarsh
Pichi Richi Railway Preservation Society	Uleybury School Museum, One Tree Hill
Polish Hill River Museum, Sevenhill	Umoona Mine Museum, Coober Pedy
Port Elliot National Trust Museum	Waite Historic Precinct (Urrbrae House)
Port MacDonnell and District Maritime Museum	Wallaroo Heritage and Nautical Museum
Port Pirie National Trust Museum	Wellington National Trust Museum
	Whyalla Maritime Museum
	Willunga Courthouse Museum
	Woomera Heritage Centre
	Yankalilla Historical Museum



## 9. Museums Accreditation and Grants Program (Cont.)

### c) Allocation of grants

Museums need to be accredited or registered with the History Trust to be eligible for Museums Accreditation and Grants Program funding. Under the Program, museums are required to contribute half of the total grant sought. Volunteer hours can be credited at \$15.00 per person-hour to 50 per cent of the museum's contribution, with the balance being in cash. The grants listed include GST.

In this round, 37 museums applied for a total of \$224,267. A variety of display projects, including fourteen that are part of the *Coastal Heritage Trail* were funded. Conservation reviews, workshops and restoration of large historic items were also popular projects. There was a good regional spread of grants across the state.

Museum	Project	Grant \$
Ardrossan National Trust Museum	Display on grain exporting	1,375
Australian Electric Transport Museum	Restoration of historic tram	4,500
Axel Stenross Maritime Museum	Accreditation grant	5,000
	Computerise collections	1,000
	Display on Port Lincoln's Scandinavian connection	1,350
Captain's Cottage Museum, Murray Bridge	Upgrade interpretive labelling	2,200
City of Unley Museum	Conservation assessment and training	2,750
Enfield and Districts Historical Society 1,950	Purchase portable display system	
Gawler National Trust Museum	Purchase collection software	478
Goolwa National Trust	Catalogue photographic collection	550
John Riddoch Interpretive Centre, Penola	Major redevelopment of displays	16,140
Kapunda Museum	Restoration of motor hearse	8,030
Kingston National Trust Museum	Display on local fishing industry	1,375
Koppio Smithy National Trust Museum	Computerise collections	3,525
	Upgrade Dobbin's wire and fencing display	1,365
Lameroo and Districts Historical Society	Stage 2 of <i>SA Dry</i> display funding	2,500
Mallee Tourist and Heritage Centre, Pinnaroo	Display plan and new display for railway station	7,000
	Conservation review by Artlab	2,750
	Stage 2 of <i>SA Dry</i> display funding	2,500
Mary MacKillop Penola Centre	Purchase computer and software	4,400
Melrose Courthouse Museum	Display on local businesses	13,500
Millicent National Trust Museum	Upgrade display on S-E drainage scheme	5,500
	Upgrade <i>Geltwood</i> shipwreck display	1,375
National Dryland Farming Centre, Kadina	<i>Lifestyle on the Farm</i> display	15,066
	Conservation workshop and training	2,750
	Stage 2 of <i>SA Dry</i> display funding	2,500
National Railway Museum, Port Adelaide	Accreditation grant	5,000
Old Customs & Stationmaster's House, Victor Harbor	Upgrade Flinders and Baudin display	1,375
Old Wool and Grain Store, Beachport	Display on the local fishing industry	1,375

## 9. Museums Accreditation and Grants Program (Cont.)

### c) Allocation of grants (Cont)

Museum	Project	Grant \$
Penneshaw Maritime and Folk Museum	Display on Flinders and Baudin	1,375
	Disaster preparedness and conservation workshops	2,750
Port MacDonnell and District Maritime Museum	Display on shipwrighting	1,375
Port Pirie National Trust Museum	Display on Italian fishermen	1,375
Port Victoria National Trust Museum	Display on the grain trade and shipwrecks	1,375
Radium Hill Museum	Display on miners and Douglas Mawson	815
Sheep's Back Museum, Naracoorte	Environmental assessment and disaster planning	2,750
Signal Point River Murray Interpretive Centre	Display on Goolwa as a river port	1,875
Stansbury Museum	Display plan and salt damp treatment	5,330
Strathalbyn National Trust Museum	Display on the Strathalbyn CFS	2,294
Streaky Bay National Trust Museum	Display on the shark fishing industry	1,375
Swan Reach Museum	Purchase computer and software for database	635
Waite Historic Precinct (Urrbrae House)	Stage 2 of <i>SA Dry</i> display funding	2,500
Wallaroo Heritage and Nautical Museum	Display on shipwrecks of Yorke Peninsula	1,375
Whyalla Maritime Museum	Restore the fishing vessel <i>Valkyrie</i>	8,740
	Display on the natural history of Upper Spencer Gulf	1,523
Willunga Courthouse Museum	Conservation of items from the <i>Star of Greece</i>	2,750
Woomera Heritage Centre	Computerise collection records	1,111
<b>TOTAL</b>		<b>160,502</b> (includes GST)

## 10. Community History Fund

The Community History Fund aims to meet a pressing need for financial assistance to individual authors, historical societies and community organisations to publish works of non-fiction relating to South Australian history. The fund also assists South Australia's history sector, which includes historical societies, museums and community organisations to undertake projects to preserve and present their community history.

The total budget for 2001–02 was \$40,000, an increase on the previous year of \$5,000. This increase was due to the roll over of unclaimed grants from previous years.

The panel appointed for 2001–02 was Margaret Anderson, Chief Executive, History Trust of South Australia, Dr Kerry Round, Department of History, Adelaide University and Dieuwke Jessop, Local History Officer, City of Holdfast Bay.

There were 82 applications for funding in 2001–02 compared with 62 for the previous year. This represented 38 Projects and 44 Publications in comparison with 25 Projects and 37 Publications the previous year. Grant applications totalled \$135,909 and of these \$97,791 were for publications and \$38,118 for projects. The judging committee recommended that \$13,500 be distributed to 21 project applicants and \$26,500 to 17 applicants for publications grants.

<b>a) Publications</b>		<b>\$</b>
Anglican Parish of Mitcham	Publication <i>The Anglican Church of St Michael, Mitcham – 150 Years of Parish Life</i>	2,000
Australian Electric Transport Museum (SA) Inc.	Publication <i>The Southern Lines</i>	1,334
Back to Wunkar Committee	Publication <i>From Mallee to Wheat Fields</i>	1,000
City of Norwood, Payneham St Peters	Publication of interpretive walking guides of historic Kensington, Norwood, Kent Town and Marryatville	3,000
City of Mount Gambier	Editing of transcripts for publication	1,000
Coromandel Valley & Districts National Trust	Publication <i>The Winns Bakehouse Museum</i> brochure	500
Dr Roger Cross	Publication <i>The Willochra Plain – An Environmental History</i>	3,000
Greeks of Egypt and Middle East Society	A book on the settlement experiences of Greeks from Egypt	200
Kungari Aboriginal Association	Publication of booklet on Indigenous Perspectives on the history of the south east of South Australia	3,000
Memorial Drive Tennis Club	Publication <i>History of Memorial Drive Tennis Club</i>	750
John Nicholson	Publication <i>The Cape Jaffa Memorial</i>	1,516
Helen Oliver	Publication <i>The Barossa Valley – A Human Tapestry</i>	1,000
South East Book Promotions	Publication <i>Exploring the Anatomy of A Region</i>	3,000
W.G. Webster	Publication <i>Soda By The Ton</i>	2,500
Williamstown Tourism Group	Publication of <i>History of the Barossa Dam</i>	1,000
Willunga Branch, National Trust of SA	Publication <i>History of the Slate Industry</i>	1,200
Wirrulla Progress Committee	Publication <i>History of Wirrulla &amp; Districts</i>	500
<b>Sub Total</b>		<b>26,500</b>

**10. Community History Program (Cont.)**

<b>b) Projects</b>		<b>\$</b>
Anglican Parish of Mount Barker	Restoration of the first survey map of St James Anglican Church and cemetery	1,000
Burra Community Library	Restoration of Births, Deaths and Marriages Register	600
Carpenter Rocks Progress Association	Interpretive signs on history of Cape Banks Lighthouse	800
Coorong District Council	Digitising of photographic collection	500
District Council of Peterborough	Purchase of Marantz tape recorder	1,000
Dublin History Group	Purchase of recorder and tapes for oral history project	200
Eyre Peninsula Railway Preservation Society	Acquisition of historical photographs	300
Friends of Marble Hill	Production of photographs for a Wall of Governors	400
Friends of the Wesleyan Cemetery	Restoration of a rare cast iron memorial	1,000
Gumeracha & District History Centre	Purchase of collection database	490
History Committee of the North Adelaide Football Club	Digitising and storage of photographs	500
Kingston District Council	Erection of a memorial cairn to fishermen, lighthouse keepers and seafarers	1,000
Kungari Aboriginal Association	Digitising of photographic collection	500
Mt Barker Community Library	Acid free folders and sleeves to house original <i>Courier</i> newspaper photographs	500
North Adelaide Primary School	Restore historic photographs and film	300
Organ Historical Trust of Australia	Restoration of 1875 Hill & Sons grand organ	1,000
Penola Festival Association Inc	One day symposium on Scottish Highland migration to South Australia	1,000
Pharmaceutical Society of Australia	Restoration of Mawson's medicine kit used in his Antarctic expedition	1,000
Royal Geographical Society of South Australia Inc	Microfilming of manuscript collection	620
Schizophrenia Fellowship of SA Inc	Oral history project	290
Torrens Rowing Club	Digitising of photographic collection	500
<b>Sub Total</b>		<b>13,500</b>
<b>Sub Totals: Projects</b>		<b>26,500</b>
<b>Publications</b>		<b><u>13,500</u></b>
<b>TOTAL COMMUNITY HISTORY FUND TOTAL 2000–2001</b>		<b><u>\$40,000</u></b>

## 11. Publications

---

*Community History* magazine. Editors: Lynn Drew, Amanda James. 3 issues per year.

- Anderson, M. 'Oh what a tangled web... politics, history & museums'. *Australian Historical Studies*, Vol. 33, No. 119, April 2002, pp.179-85.
- Garcia, R. 'Educating Rita'; in *Community History*, October 2001, Vol. 11, No.3, pp.12-13.
- Szekeres, V.R. 'Representing Diversity and Challenging Racism at the Migration Museum'. *Museums, Society, Inequality*, Richard Sandell (ed), Routledge 2002, pp. 142-152.

## 12. Unpublished Conference Papers

---

- Anderson, M. 'The politics of public history'. Paper presented to the State History Conference, Adelaide, May 2002.
- Finnimore, C. 'Federation, A Nation's Identity – What is Australian?' Conference paper intended for the National Museum of Australia, September 2001. Conference cancelled. Given to the Historians' Group, HTSA, June 2002.
- Finnimore, C. 'Costume and Social History'. Paper presented to the State History Conference, May 2002.
- James, A. 'The BRL Hardy Collection'. Paper presented to the Bob Hawke Ministerial Library Conference, Adelaide, October 2001.
- James, A. 'Seventeen Ways to Share Their Legacy: Challenging Myths Through Collaborative Projects'. Paper presented to the Museums Australia National Conference, Adelaide, March 2002.
- Szekeres, V.R. 'Setting the Scene: Myth making in Museums'. Paper presented to 7th Museums Australia National Conference, Adelaide, March 2002.
- Walsh, K. 'Issues Facing Outreach Officers'. Paper presented to the Community Museums Special Interest Group meeting, Museums Australia National Conference, Adelaide, March 2002.
- Walsh, K. 'The Ins and Outs of Community History'. Paper presented at the State History Conference, Adelaide, May 2002.
- Walsh, K., James, A., Walker, K. 'Significance Assessment for Community Museums'. Paper presented to the Regional Rave workshop, Museums Australia National Conference, Adelaide, March 2002.

### 13. Grants obtained

---

#### Community History Unit

- \$ 5,000      Health Promotions Arts SA, a grant to assist in the production of the *Community History* magazine.
- \$36,000      South Australian Tourism Commission, through the Commonwealth Government's Regional Tourism Program, a grant to coordinate the *Coastal Heritage Trail*, a networking history project involving 14 of South Australia's coastal museums to present aspects of South Australia's maritime history.
- \$10,150      Department of Veterans' Affairs, a grant for *An Enduring Legacy*, to promote the positive community outcomes of the previous *Sharing Their Legacy* networking project, at the 2002 State History Conference, in the *Community History* magazine and on the History Trust website.

#### Migration Museum

- \$200,000      Arts SA for Phase two of the Museum's Re-development.
- \$ 20,000      Arts SA for Audience Development for one day event *Generations Expo*.
- \$ 4,000      Health Promotions Arts SA for the *Generations Expo*.
- \$ 5,000      Leadership Artists' Development Program from Arts SA.

#### South Australian Maritime Museum

- \$10,000      Health Promotions Arts SA. Support changing exhibitions program.
- \$ 6,000      City of Port Adelaide Enfield. Support of exhibitions *Matthew Flinders: the Ultimate Voyage* and *Baudin: Voyage of Discovery to the Southern Lands*.
- \$85,000      South Australian Tourism Commission. Support of touring exhibition *The Encounter: Flinders and Baudin*.
- \$20,000      Commonwealth Department of Veterans' Affairs. Support of core exhibition *Action Stations!! The Navy and South Australia*.
- \$55,000      National Council for the Centenary of Federation. Support of core exhibition *Action Stations!! The Navy and South Australia*.

## 14. Exhibitions and events

---

### a) Migration Museum

#### Community Access Gallery: The Forum

*The Forum is available for community groups to mount exhibitions about their own history and experience.*

*Heart of Acceptance: Cultural Healing Uncovered*, The Reciprocity in Education Project. May 2001–July 2001. Mounted by the SA Transcultural Mental Health Network.

*Survivors of Torture and Trauma: The Past Decade in Adelaide*. August 2001–November 2001. Mounted by STTARS (Survivors of Torture and Trauma Rehabilitation Service).

*Faith, Hope and Goodwill: The Contribution of the Women's Auxiliary of the Church of Saints Constantine and Helen*. December 2001–February 2002. Mounted by the Women's Auxiliary.

*In the Wake of Flinders and Baudin: The First Ten Years. 1836–1845*. March 2002–June 2002. Mounted by The Pioneers' Association of South Australia.

#### Temporary Exhibitions In-house

*Federation Roadshow: A History, A Mystery, A Bird's Eye View*. November 2001–February 2002.

*Public Moments Private Lives: Costume from the Davey Family*. December 2001–continuing.

*Ghosts of China Past*. June 2002. An exhibition of Chinese costume from the collection.

#### Touring Exhibitions: Outgoing

*The Federation Roadshow: A History, A Mystery, A Bird's Eye View*. Toured to Kadina, Ceduna, Coober Pedy, Whyalla, Salisbury and Kangaroo Island.

#### Touring Exhibitions: Incoming

*Same Story: Different Places; An Urban Dreaming*. July 2001–November 2001. An exhibition from the Unley Museum.

*Holocaust: Learning From Humanity's Greatest Tragedy*. July 2001–October 2001. From the Sydney Jewish Museum.

*Flying Colours*. October 2001–November 2001. Paintings by artist Nicholas Bishop.

*Heart and Spirit: Conversations in a Creative Landscape*. 4 March–26 June.

#### Special Events

*Celebrations*. A special education program for primary school students was offered from 1–26 November 2001 when students celebrated Halloween, the Mexican Day of the Dead and Tet Nguyen Dan, a Vietnamese ancestor festival. *Celebrations* was offered again during April and May 2002 when students enjoyed Anglican and Greek Orthodox Easter, Chinese New Year and Vietnamese New Year.

*Reconciliation Week* saw a number of special programs run from 27 May until 5 June.

*Philosophers' Café* was run on the first Friday evening of every month from July 2001 until December 2001, and April 2002 continuing.

*Hands On Our World: Generations Expo* A one-day festival. 21 April.

## 14. Exhibitions and Events (Cont.)

---

### b) National Motor Museum

#### Temporary Exhibitions In-house

*Living in the Seventies.* April 2001–June 2002.

A history of the period including cars such as Leyland P76, Datsun 280B and the famous Australian invention, the panel van. The seventies display was a vibrant display of the life and leisure of Australians and documented important social and cultural events that influence today.

*Monaro Mania.* November 2001–April 2003.

This exhibition coincided with the launch of the Holden CV6 and CV8 Monaro, 33 years after the first model was released in Australia.

#### Permanent Exhibitions

*Maerschels Garage.* Officially opened on 21 October 2001.

A volunteer project of a 1920s replica of a garage which operated in the early history of Birdwood.

#### Travelling exhibitions: Incoming

*Two Wheeled Warriors: A History of Harley-Davidson in Australia.*

Toured: Scienceworks Museum in Melbourne; the Powerhouse Museum in Sydney; Newcastle Regional Museum; and Queensland Museum.

#### Special Events

*Bay to Birdwood Classic.* 30 September 2001.

*Rock and Roll Rendezvous.* 10 March 2002.

*Rally SA.* 12–13 July 2001.

*7th World Forum of Motor Museums.* 24 September–1 October 2001. The first time this international gathering of motor museum representatives was held outside the United States or Europe.



## 14. Exhibitions and events (Cont.)

---

### c) South Australian Maritime Museum

#### Community Access Exhibitions

*Blood on the Streets.* 15 June–31 December 2001. By Flinders University Department of Archaeology.

*Myths of the Sea.* 16 August–14 September. By Reception and Year 1 students at Grange Schools.

*Port Adelaide.* January 2001–June 2002. By Port Adelaide Historical Society.

#### Permanent Exhibitions

*Life's a Beach.* From 6 July 2001.

*Action Stations!! The Navy and South Australia.* From 19 December 2001.

#### In-House Temporary Exhibitions

*Modelmania.* 11 August–25 November 2001.

#### Travelling exhibitions: Outgoing

*The Encounter: Flinders and Baudin.* Visited: Ceduna, Port Lincoln, Whyalla, Port Augusta, Port Pirie, Port Victoria, Kingscote, Victor Harbor, Robe. From 16 February to 17 April 2002

#### Travelling exhibitions: Incoming

*Sea Chest Secret.* 3 December 2001–29 January 2002.

*Follow the Sun.* 9 February–24 March 2002.

*Matthew Flinders: the Ultimate Voyage.* 28 March–23 June 2002.

#### Special Events

Cuttlefish carving craft program. Vacation program, 7–22 July 2001.

Dolphin cruises. Vacation program, 7–22 July 2001.

*ST Yelta* steam cruises. Vacation programs, 7–22 July 2001; 29 September–14 October 2001; 2–26 January 2002; 13–28 April 2002.

Ships in bottles craft program. 29 September–14 October 2001.

Ships graveyard cruises. 29 September–14 October 2001; 2–26 January 2002; 13–28 April 2002.

Teachers preview of exhibition *Matthew Flinders: the Ultimate Voyage.* 3 April 2002.

Public lecture and exhibition viewing of *I am Matthew Flinders.* 5 April 2002.

Anzac Day Free Day at the Museum. 25 April 2002.

### d) Community History Unit

#### Special Events

State History Conference, *History Goes Public.* May 25–26 2002. Union House, University of Adelaide.

## 15. Analysis of Invoices Paid 2001–2002

---

In accordance with Treasurer's Instruction 11.

Particulars	Number of accounts paid	% of Total accounts paid	Value in \$A of accounts paid	% of Total accounts paid
Paid by the Due Date*	4 062	97%	2,253,635.55	98%
Paid Late & Paid < 30 days from due date	87	2%	46,462.73	2%
Paid Late & Paid > 30 days from due date	28	1%	6,137.96	0%
<b>TOTAL</b>	<b>4 177</b>	<b>100%</b>	<b>2,306,236.24</b>	<b>100%</b>

\*The due date is defined as per 11.2 of the instruction. Unless there is a discount or written agreement between the public authority and the creditor, payments should be within 30 days of the date of the invoice or claim.

## 16. Occupational health, safety and injury management

		2001-02	2000-01	'99-2000
<b>1</b>	<b>OHS legislative requirements</b>			
	Number of notifiable occurrences pursuant to OHS&W Regulations Division 6.6	NIL		
	Number of notifiable injuries pursuant to OHS&W Regulations Division 6.6	NIL		
	Number of notices served pursuant to OHS&W Act s35, s39 and s40	NIL		
<b>2</b>	<b>Injury Management legislative requirements</b>			
	Total number of employees who participated in the rehabilitation program	NIL		
	Total number of employees rehabilitated and reassigned to alternative duties	NIL		
	Total number of employees rehabilitated back to their original work	NIL		
<b>3</b>	<b>WorkCover Action Limits</b>			
	Number of open claims as at 30 <sup>th</sup> June	6		
	Percentage of workers compensation expenditure over gross annual remuneration	32%		
<b>4</b>	<b>Number of injuries</b>			
	Number of new workers compensation claims in the financial year	8		
	Number of fatalities, lost time injuries, medical treatment only (F) (MTO) (LTI)	NIL 5 3		
	Total number of whole working days lost	10		
<b>5</b>	<b>Cost of workers compensation</b>			
	Cost of new claims for financial year	4,095.62		
	Cost of all claims excluding lump sum payments	8,285.76		
	Amount paid for lump sum payments s42 (s42, s43, s44)	400.00 7,520.00 NIL		
	Total amount recovered from external sources (s54)	NIL		
	Budget allocation for workers compensation			
<b>6</b>	<b>Trends</b>			
	Injury frequency rate for new lost-time injury/disease for each million hours worked	40.13		
	Most frequent cause (mechanism) of injury	61		
	Most expensive cause (mechanism) of injury	42		
<b>7</b>	<b>Meeting the organisation's strategic targets</b>			
	<i>(Targets and results from the organisation's action plan are entered here)</i>			

Mechanism code 61 = single contact with chemicals

Mechanism code 42 = muscular stress while handling objects

## 17. Energy Efficiency Action Plan reports

---

	Energy Use (GJ)*	Expenditure (\$)	GHG Emissions**
Base Year 2000-2001***			
<b>Portfolio Total</b>	545 982	\$71,000	-
20001-2002 Report			
<b>Portfolio Total</b>	40 614	\$7,000	-
<b>Portfolio Target****</b> (for year being reported)	71 000	\$14,000	-
<b>Portfolio Target*****</b> (for 2010)	35 000	\$5,000	-

\* Energy use data will be expressed in GJ and will be the sum of all fuel types used in each agency (ie electricity, natural gas, bottled gas, etc) for that period. This data will have been collected at a site level and aggregated up to agency level by the portfolio Reference Group member.

\*\* Many portfolios are pursuing 'triple bottom line' reporting approach. It is therefore an optional extra that portfolios may wish to include Greenhouse Gas Emissions (in CO<sub>2</sub>) as a means of quantifying a significant aspect of environmental performance. Greenhouse gas coefficients differ for fuel types.

\*\*\* It is acknowledged that portfolio structures change over time. Therefore the portfolio baseline will represent the structure of the portfolio in the given reporting period.

\*\*\*\* The portfolio target for the current year is based on an agreed methodology and can be obtained through the portfolio Reference Group member.

\*\*\*\*\* The portfolio target in 2010 should equal a 15% reduction from the base year 2000-01.

## 18. Age profile

Age Group (years)	Number of Employees (Persons)			% of all agency employees	% of Australian Workforce*	% of Australian Population*
	Male	Female	Total			
15-19	1	0	1	1.7	8.0	7.0
20-24	1	4	5	8.5	11.4	7.1
25-29	1	7	8	13.6	11.9	7.5
30-34	4	4	8	13.6	11.9	7.5
35-39	1	5	6	10.1	11.8	7.6
40-44	3	2	5	8.5	12.3	7.6
45-49	2	9	11	18.6	11.5	7.0
50-54	0	0	0	0	9.9	6.6
55-59	1	5	6	10.1	6.7	5.1
60-64	2	2	4	6.8	3.1	4.1
65+	2	3	5	8.5	1.6	12.5

\* Australian workforce information (as at April 2002) sourced from ABS Supertable C2 and Australian population information (as at June 2001) sourced from ABS 3201.0 <http://abs.sagrn.sa.gov.au/abs/abs@.nsf/abshome>

## 19. Human resource development

	% of employee with a documental individual development plan which was either implemented or revised during the last 12 months				% of training expenditure relative to total remuneration costs				Number of employees enrolled since July 1 in a qualification (or a unit from a qualification) from an accredited training package				Agency investment in leadership & management development (2001-2002 benchmark of 2% determined by Senior Management Group)			
	99-00	00-01	01-02	Target 02-03	99-00	00-01	01-02	Target 02-03	99-00	00-01	01-02	Target 02-03	99-00	00-01	01-02	Target 02-03
Executives	0	0	0	100%				2%				0				
Senior Managers*	0	0	100	100%				2%				0				
Middle Managers*	0	0	100	100%				2%				0				
First Line Supervisors*	0	0	0	50%				2%				0				
Others	0	0	0	30%				2%				0				
Total				76%				2%				0		0		0

**20. Public Sector Management Act 1995 employees**  
**By Stream, Level, Appointment Type and Gender as at June 2002**

STREAM	Ongoing			Contract Longer Term			Contract Shorter Term			Casual			Total		
	M	F	Total	M	F	Total	M	F	Total	M	F	Total	M	F	Total
<b>ADMINISTRATIVE</b>															
Admin. Services Officers															
Trainees															
ASO1	1	2	3										1	2	3
ASO2		2	2	1	2	3					1	1	1	5	6
ASO3		1	1		1	1								2	2
ASO4		2	2											2	2
ASO5		1	1											1	1
ASO6															
ASO7					1	1		1	1					2	2
ASO8															
Managers Admin. Services															
MAS1															
MAS2				1		1							1		1
MAS3		1	1											1	1
<b>Total ADMINISTRATIVE Services</b>	<b>1</b>	<b>9</b>	<b>10</b>	<b>2</b>	<b>4</b>	<b>6</b>	<b>1</b>	<b>1</b>	<b>1</b>	<b>1</b>	<b>1</b>	<b>1</b>	<b>3</b>	<b>15</b>	<b>18</b>
<b>OPERATIONAL SERVICES</b>															
Trainees															
OPS1															
OPS2	2		2										2		2
OPS3															
OPS4	1		1										1		1
OPS5															
OPS6															
OPS7															
<b>Total OPERATIONAL Services</b>	<b>3</b>		<b>3</b>										<b>3</b>		<b>3</b>
<b>PROFESSIONAL</b>															
Prof. Services Officers															
PSO1	1	1	2		3	3	1		1				2	4	6
PSO2		2	2											2	2
PSO3		1	1											1	1
PSO4															
PSO5															
<b>Total Prof. Services Officers</b>	<b>1</b>	<b>4</b>	<b>5</b>		<b>3</b>	<b>3</b>	<b>1</b>		<b>1</b>				<b>2</b>	<b>7</b>	<b>9</b>
Managers Prof. Services															
MPS1															
MPS2															
MPS3															
<b>Total PROFESSIONAL Services</b>	<b>1</b>	<b>4</b>	<b>5</b>		<b>3</b>	<b>3</b>	<b>1</b>		<b>1</b>				<b>2</b>	<b>7</b>	<b>9</b>
<b>TECHNICAL</b>															
TGO2	1	1	2										1	1	2
TGO3															
TCO4															
TGO5															
<b>Total TECHNICAL Services</b>	<b>1</b>	<b>1</b>	<b>2</b>										<b>1</b>	<b>1</b>	<b>2</b>

**20. Public Sector Management Act 1995 employees (Cont.)**  
**By Stream, Level, Appointment Type and Gender**

---

STREAM	Ongoing			Contract Longer Term			Contract Shorter Term			Casual			Total		
	M	F	Total	M	F	Total	M	F	Total	M	F	Total	M	F	Total
<b>EXECUTIVE*</b>															
Executive Officers															
EL1					1	1								1	1
EL2															
EL3															
Level A															
Level B															
Level C															
Level D															
Level E															
Level F															
<b>Total EXECUTIVE Services</b>					1	1								1	1
Other Executives															
MLS 1P															
MLS 2P															
MLS 1															
MLS 2															
MLS 3															
MLS 4															
Other Senior Officers															
<b>Total EXECUTIVE</b>					1	1								1	1
Executive Right to Further Appointment															
Tenured															
Untenured															
Other Legal Officers															
LEC5															
Other															
<b>Total OTHER</b>															
<b>TOTAL ALL STREAMS</b>	6	14	20	2	8	10	1	2	3	0	1	1	9	24	33

## 21. South Australian Government Services Employment Award (Weekly Paid) By Stream, Level, Appointment Type and Gender

---

STREAM	Ongoing			Contract Longer Term			Contract Shorter Term			Casual			Total		
	M	F	Total	M	F	Total	M	F	Total	M	F	Total	M	F	Total
<b>WEEKLY PAID*</b>															
GSE01															
GSE02	1		1										1		1
GSE03	4	2	6	1	1	2				2	6	8	8	10	18
GSE04		5	5		2	2								7	7
GSE05															
<b>TOTAL WEEKLY PAID</b>	5	7	12	1	3	4				2	6	8	9	17	26